



postal bulletin

Directives Control Division, Washington, DC 20260

PB 21079—May 20, 1976—12 Pages

Older Americans Month

The month of May, 1976 has been proclaimed as Older Americans Month.

Among our Nation's most precious resources are the collective wisdom, experience and abilities of our older citizens.

As one of the Nation's largest employers, I am pleased to publicly recognize the invaluable contributions being made by the Postal Service's older employees and the fact that older workers are represented in all levels of our work force. I welcome this opportunity to join other Federal agencies in highlighting the contributions these citizens have made in the past and the potential they hold for the future.

I know that each postal manager will ensure equal access to opportunities for all qualified employees, including our older employees.

13-Cent Benjamin Franklin Commemorative Stamp

Production difficulties have developed at the Bureau of Engraving and Printing which will result in a delay in the delivery to some post offices of the Benjamin Franklin stamps.

In order to have a supply of stamps at nearly all post offices by June 2, 1976, two automatic distributions will be made by the Bureau of Engraving and Printing. The first shipment will be approximately one half the quantity normally furnished. The second shipment will follow immediately and should be completed by June 11, 1976.

Postal Data Centers have been requested to prepare two automatic distribution printouts with related invoices and labels for use by sectional centers in making the initial and subsequent distributions to associate post offices.

Sectional Centers which maintain and local stations and branches should reduce the quantity of stamps furnished initially to insure that all postal outlets have a supply by first day of sale.

This notice should be brought to the attention of all sales personnel.—*Customer Services Dept., 5-20-76.*

Domestic Orders

False Representation. Enforced by Postmaster at cities listed.

State/city	Name covered
CA, Garden Grove	Successful Living 9622 Vons
FL, AMF Miami	University of Haiti School of Medicine Director of Admissions University of Haiti Post Office Box 59-3503

—*Judicial Officer, 5-20-76.*

Wanted Circulars Canceled

Destroy the wanted circulars issued for the following postal offenders:

Name	Date of Issuance
Irving Joseph Behling, Jr.	9-22-75
John Daniel Blow	7-21-75

—*Inspection Service, 5-20-76.*

Stamp To Be Removed From Sale

The following stamp will be removed from sale at the Philatelic Sales Division at the close of business May 31, 1976:

10¢ Postal Service Bicentennial.

Any stock of the above item remaining on hand after May 31, 1976, shall immediately be withdrawn from all philatelic outlets and placed on general sale until June 30, 1976. After that date, any remaining stock shall be handled in accordance with 224, Handbook F-1, *Financial and Cost Controls.*

The Inspection Service and postal system Examiners will give attention in this area during audit reviews.—*Customer Services Dept., 5-20-76.*

CONTENTS

Page Col.

9-Cent Caesar Rodney Single and Reply-Paid Postal Cards	4	1
13-Cent American Doctor Commemorative Embossed Stamped Envelope	2	1
13-Cent Benjamin Franklin Commemorative Stamp	1	2
Adhesive on Labels for Central Markup System	4	2
Arrow Locks for Collection Boxes	5	3
Australia—Valuable Articles	2	3
Bicentennial Souvenir Sheets	1	1
Change-of-Address Kit	5	3
Domestic Orders	1	2
First-Class Presort Markings	6	1
Form 1767	5	3
Form 3962	6	3
Form 5930	4	2
Hazards of Walk-In Vaults	2	1
Injury Compensation Program	6	1
International Inaugural Service	4	3
International Mail	6	2
Meadows Facility, NJ—Name Change	6	3
Migratory-Bird Hunting Stamps Series 1976-77	5	1
Money Orders, Canadian	9	1
Money Orders, U.S.	7	1
PMG Message—Older Americans Month	1	1
Postal Card Requisitioning	6	3
Post Office Changes	3	1
Publication 42, International Mail	6	2
Stamp To Be Removed from Sale	1	3
Stamps To Be Issued in 1976	4	3
Wanted Circulars Canceled	1	2

Bicentennial Souvenir Sheets

The release at selected post offices and the Philatelic Sales Division of the four Bicentennial Souvenir Sheets shall be deferred until June 7, 1976.

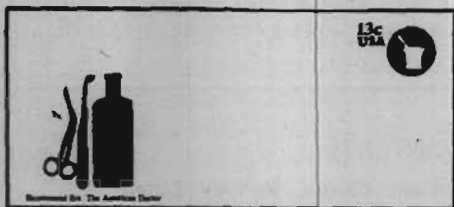
The four souvenir sheets will be first placed on sale at Philadelphia, PA, on May 29, 1976, as previously announced. Sales will be restricted to that city for the duration of the international stamp show INTERPHIL '76 which closes June 6, 1976.

Distribution of the four souvenir sheets in two separate but equal shipments remain unchanged. The second shipment will be completed by the Bureau of Engraving and Printing on June 12, 1976.—*Customer Services Dept., 5-20-76.*

13-CENT AMERICAN DOCTOR COMMEMORATIVE EMBOSSED STAMPED ENVELOPE

Description. The 13-cent Doctor commemorative embossed stamped envelope produced on brown laid-finish stock will be first placed on sale at Dallas, TX 75260 on June 30, 1976. This is the fourth in a series of Bicentennial Era envelopes which honors the American Doctor with a mortar and pestle forming the indicia. The series incorporates a new format for envelopes, carrying a silhouette in the lower left hand corner which complements the subject of the indicia. Depicting the occupations of the common man which formed the basis of American economy, the last envelope in this series will honor The American Craftsman. These embossed stamped envelopes are designed by Arthur Congdon.

Postmasters Shall Not Place This Envelope on Sale Before July 1, 1976.



The envelope will be available in sizes 6¾ and 10 regular and can be ordered through post offices with printed return addresses in minimum lots of 500 at the same prices currently charged for printed stamped envelopes.

Collectors. Request first-day cancellations from: Doctor Envelope, Postmaster, Dallas, TX 75260, plainly indicating full name and address, INCLUDING ZIP CODE, with remittance to cover the cost which is 15 cents per envelope. Both sizes of regular envelopes will be serviced, but unless the No. 10 is stipulated in the request, the cancellation will be on a No. 6¾. Requests must be post-marked no later than June 30, 1976.

For the benefit of collectors, the 13-cent Doctor commemorative embossed stamped envelopes will be available at the Philatelic Sales Division, Washington, DC 20265, beginning July 1, 1976. The envelope will be available in sets of 2, one each size 6¾ and No. 10 at 30 cents per set or minimum box lots of 500 plus postage and handling charges. The minimum handling charge is 50 cents. The box lot prices for 500 plain Doctor embossed stamped envelopes are as follows:

6¾ regular—\$68.55
10 regular—\$69.20

Requisitioning. All post offices may submit requisitions for the 13-cent Doctor commemorative embossed stamped envelope to the U.S. Stamped Envelope Agency, Williamsburg, PA 16693. *Orders will be filled as fast as manufacturing and distribution facilities permit.*

Plain Envelopes. Requisitions for the plain Doctor commemorative embossed stamped envelopes shall be submitted immediately in accordance

with the following schedule using Form 3205, *Requisition for Plain Stamped Envelopes.*

Size No.	Item No.	Quantities available
6¾	691	Order in lots of 500 to 5,000 and thereafter in multiples of 5,000.
No. 10	191	Order in lots of 500 to 2,500 and thereafter in multiples of 2,500.

Printed Envelopes. Postmasters may until August 30, 1976 accept customers' requests for the size 6¾ and 10 regular Doctor embossed stamped envelopes with printed return addresses. Orders must be for minimum lots of 500 envelopes using the special item numbers assigned above and shall be sold at the prices currently charged for size 6¾ and size 10 regular printed embossed stamped envelopes. Allow the usual 6 weeks for delivery. However, requests for printed embossed stamped envelopes will not be dispatched from the U.S. Stamped Envelope Agency, Williamsburg, PA prior to July 1, 1976.

Postmasters are urged to requisition a supply of the new Doctor design embossed stamped envelopes as these envelopes may be of interest to collectors. Postmasters should also be certain that all window clerks are aware that the new Doctor Bicentennial Era envelopes are available for sale in both 6¾ and 10 regular (without windows) and with printed return addresses.—*Customer Services Dept., 5-20-76.*

Hazards of Walk-In Vaults

Reference is made to an article in Postal Bulletin 21074, dated April 8, 1976. The article, entitled *Hazards of Walk-In Vaults*, states that it is possible to accidentally lock a person into the walk-in vault, and that if the vault is not equipped with inside door-opening device, or emergency communication system, serious or fatal injury to the person may result.

The article also suggested that when the vault door is opened, a chain should be draped from the door handle on the outside of the vault door around the front edge and hooked on the back of the door. If difficulty is encountered in the above method, the chain may be placed

between the back edge of the door and the jamb and draped over one of the hinges.

Chains are available for this purpose from the Eastern and Western Area Supply Centers. The item number to be utilized when ordering this chain is Item 0830-DEF. Be sure to specify on the requisition that the chain is to be used to prevent accidental closure of vault doors. The Item 0830-DEF chain is identical to Item 0830, vestibule door chain, however, 0830-DEF has an inherent weakness and should NOT be used to secure vestibule doors.—*Employee Relations Dept., 5-20-76.*

Australia—Valuable Articles

Effective immediately, the postal administration of Australia will accept banknotes, currency notes, or any kind of securities payable to bearer, platinum, gold or silver (whether manufactured or unmanufactured); precious stones, jewelry, or precious articles in insured parcel post packages or registered letters and letter packages. Previously these items were admitted only in registered letters or letter packages.

Publication 42, *International Mail*, will be amended to reflect this change.—*Rates and Classification Dept., 5-20-76.*

POST OFFICE CHANGES NO. 26

(Supplemental to 1975-76 Directory of Post Offices, Publication 26)

Abbreviations: B = Branch, C = City Delivery, Conv. = Converted, CPO = Community Post Office, Disc. = Discontinued, DPO = Directory of Post Offices, Estab. = Established, F = Finance, IC = Independent City, MOU = Money Order Unit, MPO = Main Post Office, MR = Mailing Restrictions (from Part 123 PSM) apply, NP = Nonpersonnel, NZCD = National ZIP Code Directory, RB = Rural Branch, Rec. = Recinded, RS = Rural Station, S = Station, x = Classified. (Contract stations and branches do not have the symbol "x" following the symbol for type of installation.) (See PB 21044, 6-26-75.)

State	Name of post office	County/parish	Name of station, branch, or unit	Type S/B	ZIP Code	Change action	Effective date	Explanation of change
AK	Barrow	Northwestern	Nulqant	CPO	99728	Add	5-1-76	CPO estab.
AR	Dutton	Madison			72726	Delete	7-2-76	} PO disc.
AR	(Mail to Saint Paul)	do			72760	Delete	7-5-76	
AR	Glenwood	Pike	Daisy (mail to Kirby)	RB	71999	Delete	8-8-76	
GA	Stonewall	Fulton			30282	Delete	6-30-76	} PO conv. to CPO.
GA	Union City	do	Stonewall	CPO	30282	Add	7-1-76	
IL	Roselle	DuPage	Schaumburg	Bx	60193	Delete	8-15-76	} Amend PB 21067 to correct ZIP Code of Bx.
IL	do	do	do	Bx	60194	Add	8-15-76	
IL	do	do	Woodfield	Bx	60195	Delete	8-15-76	} Amend PB 21073 to correct name of Bx.
IL	do	do	Woodfield Mall	Bx	60195	Add	8-15-76	
IL	Pierson Station	Piatt			61947	Delete	6-15-75	} PO disc.
IL	(Mail to Hammond)	do			61929	Delete	6-19-76	
IN	Carlos	Randolph			47829	Delete	6-18-76	} PO disc.
IN	(Mail to Lynn)	do			47855	Delete	6-19-76	
IN	Leipsc.	Orange			47440	Delete	7-9-76	} PO disc.
IN	(Mail to Orleans)	do			47452	Delete	7-10-76	
IN	Pierceville	Ripley			47089	Delete	7-2-76	} PO disc.
IN	(Mail to Milan)	do			47061	Delete	7-8-76	
IA	Humeston	Wayne	Le Roy	RB	50128	Delete	4-30-76	RB disc.
KS	Burr Oak	Jewell	Northbranch	RB	66696	Delete	6-19-76	RB disc.
KS	Harper	Harper	Crystal Springs	RB	67083	Delete	5-21-76	RB disc.
KS	Shawnee Mission	Johnson	Mission	Bx	66206	Add	5-5-76	Bx estab.
KY	Berrys Lick	Butler			42208	Delete	7-6-76	} PO disc.
KY	(Mail to Quality)	do			42206	Delete	7-7-76	
KY	Mason	Grant			41054	Delete	7-2-76	} PO disc.
KY	(Mail to Williamstown)	do			41097	Delete	7-8-76	
KY	Saint Paul	Lewis			41170	Delete	7-7-76	} PO disc.
KY	(Mail to Quincy)	do			41166	Delete	7-8-76	
MS	Fidler	Issaquena			39070	Delete	7-16-76	} PO conv. to CPO.
MS	Rolling Fork	do	Fidler	CPO	39070	Add	7-16-76	
MS	Ocean Springs	Jackson	Vanceleave	RB	39544	Delete	4-28-76	RB disc.
NE	Holland	Lancaster			68373	Delete	7-6-76	} PO disc.
NE	(Mail to Hickman)	do			68372	Delete	7-7-76	
NY	Schenectady	Schenectady	Brandywine	Sx	12304	Delete	7-4-76	Sx disc.
NY	do	do	Crane Street	Sx	12303	Delete	5-22-76	Sx disc.
NY	do	do	Heritage	Sx	12303	Add	7-6-76	Sx estab.
OH	Edenton	Clermont			45177	Delete	8-27-76	} PO disc.
OH	(Mail to Goshen)	do			45122	Delete	8-28-76	
OK	Bridgeport	Caddo			73013	Delete	6-19-76	} PO disc.
OK	(Mail to Hinton)	do			73047	Delete	6-20-76	
OR	Clatskanie	Columbia	Mist	RB	97016	Delete	12-31-75	RB disc.
PA	Media	Delaware	Wawa	RB	19063	Delete	5-3-76	RB disc.
SD	Firesteel	Dewey			57628	Delete	7-1-76	} PO conv. to CPO.
SD	Timberlake	do	Firesteel	CPO	57628	Add	7-2-76	
SD	Utica	Yankton			57067	Delete	7-6-76	} PO conv. to CPO.
SD	Yankton	do	Utica	CPO	57067	Add	7-7-76	
TX	Carta Valley	Edwards			78835	Delete	6-19-76	} PO conv. to CPO.
TX	Del Rio	do	Carta Valley	CPO	78835	Add	6-20-76	
TX	Stacy	McCulloch			76879	Delete	6-19-76	} PO disc.
TX	(Mail to Coleman)	Coleman			76834	Delete	6-20-76	
VA	Alfonso	Lancaster			22421	Delete	7-16-76	} PO disc.
VA	(Mail to Lancaster)	do			22508	Delete	7-17-76	
VA	Butylo	Middlesex			22434	Delete	7-16-76	} PO disc.
VA	(Mail to Laneview)	Essex			22504	Delete	7-17-76	
WV	Ballenges	Summers			24619	Delete	7-16-76	} PO disc.
WV	(Mail to Talcott)	do			24681	Delete	7-17-76	
WV	Clarkburg	Harrison	Mutter Fort-Stonewood	Bx	26801	Delete	5-1-76	} Bx conv. to B.
WV	do	do	do	B	26801	Add	5-2-76	
WV	Charleston	Kanawha	Rand	B	26306	Delete	6-11-76	B disc.
WV	Frametown	Braxton	Servis	RB	26637	Delete	5-31-76	RB disc.
WV	Highland	Ritchie			26371	Delete	7-16-76	} PO disc.
WV	(Mail to Ellenboro)	do			26346	Delete	7-17-76	
WV	Replate	Webster			26283	Delete	7-16-76	} PO disc.
WV	(Mail to Hacker Valley)	do			26222	Delete	7-17-76	
WV	Summersville	Nicholas	Hominy Falls	RB	26678	Delete	5-31-76	RB disc.
WV	do	do	Lockwood	RB	26677	Delete	4-30-76	RB disc.
WI	Danbury	Burnett	Dairyland	RB	54890	Delete	4-27-76	RB disc.
WI	Edmund	Iowa			53535	Delete	7-2-76	} PO disc.
WI	(Main to Dodgeville)	do			53523	Delete	7-8-76	
WI	Manchester	Greenlake			53045	Delete	7-2-76	} Amends PB 21077.
WI	(Mail to Markesan)	do			53046	Delete	7-8-76	
WI	Rio Creek	Kewaunee			54231	Delete	6-18-76	} PO conv. to CPO.
WI	Algoma	do	Rio Creek	CPO	54231	Add	6-19-76	
WI	Woodford	Lafayette			53590	Delete	7-2-76	} PO disc.
WI	(Mail to Argyle)	do			53504	Delete	7-8-76	

¹ RB located in Decatur County.
² RB located in Douglas County.

9-Cent Caesar Rodney Single and Reply-Paid Postal Cards

Description. The 9-cent Caesar Rodney single and double (reply) postal cards will be first placed on sale at Dover, DE 19901 on July 1, 1976. These cards are the sixth in a series of postal cards honoring American patriots.

Postmasters Shall Not Place These Cards On Sale Before July 2, 1976.



Color: Blue
Printing: Unlimited
Designer: Howard C. Mildner

Collectors. Request first-day cancellations from: Rodney Postal Cards, Postmaster, Dover, DE 19901. Enclose 9 cents for each single card and 18 cents for each double card. Indicate type of card desired. Send stamped self-addressed envelopes of an appropriate size for the return of the cards under cover. Requests must be postmarked no later than July 1, 1976. The Caesar Rodney will be available at the Philatelic Sales Division, Washington, DC 20265, beginning July 2, 1976.

Supply. There is no automatic distribution being made of these 9-cent Caesar Rodney postal cards. All post offices may requisition the 9-cent Caesar Rodney regular cut cards in quantities of 500, 1,000, 2,000, 3,000, 5,000, 10,000 and multiples of 10,000 by immediately submitting Form 3216, *Requisition For Postal Cards—Bulk Quantities (using item No. 285)* to Postal Card Unit, Room 859, Government Printing Office, Washington, DC 20401. The 9-cent Caesar Rodney sheet cards may be ordered in minimum lots of 10,000 cards and multiples thereof **using item No. 295.**

All post offices requiring the reply card (9 cents each half) in minimum lots of 250 cards, should order 250, 500, 1,000, 2,000, 5,000 and multiples of 5,000 by immediately submitting Form 3216 (**using item No. 269**) to the Government Printing Office.

All requisitions for the 9-cent Caesar Rodney postal cards, both

Form 5930

Effective immediately, the reporting frequency for Form 5930, *Examination Center Operations and Cost Report*, is changed from each accounting period to twice yearly.

The new submission dates are:

a. Close of business the week following the end of accounting periods 6 and 13. Form 5930 will be revised to reflect the new submission requirements when replenishment is required. Make pen and ink change to existing stock to reflect the new reporting requirements.

b. An additional report will be required one week following the close of the Transition Quarter, A/P 19. Change Item No. 2 under Instructions from "Submission date is close of business the week following the end of each Postal Fiscal accounting period." to "Submission date is close of business the week following the end of Accounting Periods 6 and 13."

Installation heads are reminded that an addition or deletion of an examination annex and personnel actions which result in a change in the staff of examinations specialists or employees supporting the examinations specialist require compliance with 420 of Handbook P-11, *Personnel Operations—Employee Relations Dept.*, 5-20-76.

Adhesive on Labels for Central Markup System

The quality of adhesive on labels (Item 0-7503) received on recent contracts is unsatisfactory and many labels are becoming detached during processing of mail.

Action is being taken to revise specification to improve the quality of the adhesive. Until new labels are produced with the improved adhesive, markup employees should exercise extreme care in the application of these labels so as to reduce this problem.—*Procurement & Supply Dept.*, 5-20-76.

single and sheet and 18-cent reply, should be limited to the quantity needed to meet the philatelic demand. Requisitions received after July 1 will be filled with the current 9-cent single and 18-cent double Witherspoon cards until stocks are depleted. *Customer Services Dept.*, 5-20-76.

International Inaugural Service

The Pan American Airways inaugural service from New York (via Dallas/Fort Worth) to Pago Pago and Nandi as announced in Postal Bulletin 21077, 5-6-76, is herewith amended to include philatelic service to Nandi from the Dallas/Fort Worth offices. Scheduled flight date is May 27, 1976. Same instructions are applicable. Additionally, a clear space 2½ by 2½ inches on the lower left hand portion of the cover and to the left of the address must be allowed for the cachet. An additional 1½ inches to the left of the innermost stamp must be provided to permit a clear postmark. If a clear space is not provided, a cachet will not be applied. Covers to be processed at Dallas/Fort Worth for Nandi should reach the office applying the cachet no later than two days prior to the scheduled flight and should be enclosed in another envelope addressed as follows:

<i>Cachets to be applied by</i>	<i>Send covers to</i>
Dallas City Post Office.	Postmaster General Post Office Dallas, TX 75280 Attn: Supervisor, Customer Service Representative
Fort Worth City Post Office.	Postmaster Fort Worth, TX 76101
Dallas/Fort Worth Airport Mail Facility.	Operations Manager Airport Mail Facility Dallas/Fort Worth Regional Airport Dallas, TX 75281

Covers already postmarked, those not properly prepared and those posted in the usual manner will not receive cachets.—*Logistics Dept.*, 5-20-76.

Stamps To Be Issued In 1976

Postmasters are advised that the following commemorative stamps have been announced for issuance during 1976:

13¢ Olympic Games (block of four)—July.

13¢ Adolph S. Ochs—September 18.

Details on each of these items together with design and first day issue information will be announced later.—*Customer Services Dept.*, 5-20-76.

Migratory-Bird Hunting Stamps Series 1976-77

Postmasters at all offices with 190 or more revenue units and those offices with 189 or less revenue units, having a demand for the \$5 Migratory-Bird Hunting Stamp shall immediately consider their requirements for the 1976-77 series stamp. These stamps may be placed on sale on July 1.

Associate Offices

Postmasters shall, by not later than June 1, 1976, submit a separate requisition on Form 17, *Stamp Requisition*, to their sectional center for a sufficient quantity of \$5 Migratory-Bird Hunting Stamps to last until June 30, 1977. Postmasters shall order the new series stamp in sheets of 30, except those offices requiring a lesser quantity may order 15 stamps. Also indicate on Form 17, the number of *Waterfowler — Attention* posters needed for the local office, stations, and branches. Requisition additional stocks of bird stamps from the sectional center if the initial supply is not adequate to last until June 30, 1977.

Sectional Centers

Postmasters at sectional centers designated to distribute accountable paper requiring the \$5 Migratory-Bird Hunting Stamp in minimum lots

of 3,000 stamps shall requisition the stamps on Form 3356, *Stamp Requisition—Bulk Quantities* (using item No. 316) direct from the Bureau of Engraving and Printing. Order in quantities of 3,000, 6,000, 9,000, 12,000, 15,000, 30,000, 45,000, 60,000, 75,000, and multiples of 75,000 stamps.

Postmasters at sectional centers requiring less than 3,000 bird stamps shall immediately submit a Form 17 to their accountable paper depositories. Each sectional center designated to distribute accountable paper will be automatically furnished an initial supply of 150 posters No. 3-112, *Waterfowlers—Attention*. Additional posters, if needed, may be ordered from the area supply center, using Form 4750, *Special Requisition for Supplies*.

Hunting Regulation Pamphlets

The Interior Department will not provide hunting regulations in pamphlet form this year. The *Waterfowlers—Attention* poster directs inquiries concerning hunting regulations to the local wildlife agency or a regional office of the Fish and Wildlife Service. The regional office addresses are listed on the posters.—*Customer Services Dept., 5-20-76.*

Change-of-Address Kits

During June 1976, Change-of-Address Kits (Notice 8A) will be shipped to all sectional centers. Upon receipt of the kits, sectional centers should make a secondary distribution to their associate offices. Sufficient quantities should be forwarded based upon the number of households serviced by that facility and upon anticipated usage. Window clerks should be advised to give out kits whenever customers request change-of-address materials.—*Customer Services Dept., 5-20-76.*

Form 1767

It has been brought to the attention of the National Joint Labor-Management Safety and Health Committee that in several offices Form 1767, *Report of Hazard, Unsafe Condition or Practice*, is not available for employee use. It is the USPS policy that this form be available in all offices. Offices that do not have the form available are authorized to submit requisitions on Form 4750.—*Employee Relations Dept., 5-20-76.*

Arrow Locks for Collection Boxes

A current contract for collection boxes provides for all boxes to be shipped with a security lock unit installed. New collection boxes with this security lock installed by the manufacturer have been redesignated Item 1170-K. In addition, a security lock modification kit, Item 1170-E, is available for regular requisitioning from supply centers to modify installed collection boxes as warranted.

A standard size arrow lock cannot be used on collection boxes equipped with the security lock unit. A *modified* arrow lock, or arrow lock with *extension*, is required for use with the security lock when installed on collection boxes.

Offices planning to modify existing boxes with security lock kits, Item 1170-E, or having ordered new collection boxes should submit a *Postal Lock and Key Requisition*, Form 4983, to the Mail Equipment Shop specifying, arrow lock with extension.—*Delivery Services Dept., 5-20-76.*

HIDDEN DIVIDENDS

You may think the only dividend your credit union has to offer is a high passbook savings dividend, probably compounded quarterly. NOT SO! It has money to lend (with automatic life insurance to eligible borrowers at no extra charge), payroll deductions, and personal, confidential service in all business transactions. Best of all, it is a select-membership group and you are a part of it. Members like you control the credit union through the board of directors you elect. You tell them what you need, and they listen. So, join your local credit union. If you have none available, write USPS FCU, Box 23650, Washington, DC 20024.

First-Class Presort Markings

The February 12, 1976, POSTAL BULLETIN approved the use of envelopes marked *Presorted First-Class* prior to the implementation of the first-class mail presort discount. The following requirements have been established for identifying presorted first-class mail:

1. The marking must be legible.
2. The marking must be either incorporated as part of the permit imprint or printed or rubber stamped by the mailer on each piece.
3. If not in the permit imprint, the marking must be placed above the address and immediately below or to the left of the meter stamp or permit imprint.
4. The marking may not be above the permit imprint or meter stamp.
5. The marking may be printed in the postage meter advertising plate area.
6. The marking may not be abbreviated.

It is to be emphasized that envelopes marked in the above manner may be used to mail ordinary first-class matter *presented in bulk quantities*, whether presorted or not, unless and until the new classification is established. However, no discounts will be given on such mailings and, if the new presorted first-class mail subclassification is eventually established, the use of the Presorted First-Class marking will be restricted to pieces (including residue) presented in mailings that qualify as presorted first-class mail.—*Rates & Classification Dept.*, 5-20-76.

Injury Compensation Program

Procedures for implementation of the Federal Employees' Compensation Act (FECA) as amended were provided in Postal Bulletin 21073, March 25, 1976.

Section II-A states that employees of the USPS who suffer disabling on-the-job traumatic injuries are entitled to continuation of regular pay for the period of disability *up to a maximum of 45 calendar days for each injury*.

Some installations are not tracking the 45 calendar day period which results in employees being granted excessive workers' compensation (WC)

International Mail

This is to remind postal employees that:

a. The suspension of surface and airmail service with the Khmer Republic (Cambodia) is still in effect as announced in a previous POSTAL BULLETIN.

b. The suspension of surface mail service with Lebanon is still in effect as announced in POSTAL BULLETIN 21073, March 25, 1976.

c. The suspension of surface and airmail service with Portuguese Timor is still in effect as announced in POSTAL BULLETIN 21067, January 15, 1976.

d. Service to South Vietnam is limited to surface and airmail ordinary letters as announced in a previous POSTAL BULLETIN.

Although Publication 42, *International Mail*, (TL-83), states in appendix B that service is available for postal union mail and parcel post for Lebanon and Portuguese Timor, and that service is available for postal union mail for the Khmer Republic and Vietnam, these temporary conditions are applicable until further notice.—*Rates and Classification Dept.*, 5-20-76.

Publication 42, International Mail

Publication 42, *International Mail*, has an error in Postal Union Postage Rate chart for Costa Rica in appendix B. The table reference for airmail letters and letter packages should be table 3-2, col. B not table 3-9, col. B. Write in this change pending the revision of Publication 42.—*Rates and Classification Dept.*, 5-20-76.

hours. Control offices and/or control points are responsible for terminating continuation of pay when advised by an employee's doctor, or the Office of Workers' Compensation Programs (OWCP), that the employee is no longer disabled, or at the end of the 45 calendar-day period, whichever occurs first. These procedures must be strictly followed.—*Employee Relations Dept.*, 5-20-76.

Postal Card Requisitioning

The Government Printing Office reports that approximately 20 percent of all requisitions received are incorrect. Some of the errors include discontinued postal card item numbers and/or postage stamps and stamped envelopes being ordered on Form 3216, *Postal Card Requisition*. Only the postal card items listed below are available from the Government Printing Office:

Item No.	Type
289 -----	9¢ Domestic regular—cut.
289B -----	9¢ Domestic regular—banded (vending machine only).
218 -----	18¢ Domestic reply.
294 -----	9¢ Domestic regular—sheets.
233 -----	12¢ International—regular.
221 -----	21¢ International—airmail.

—Customer Services Dept.—5-20-76.

Meadows Facility, NJ—Name Change

This is to advise that the name of the Meadows Facility, NJ, has been changed to North Jersey, NJ.

All mail formerly labeled to *Meadows Facility NJ 07099* will be labeled to *North Jersey NJ 07099*.—*Logistics Dept.*, 5-20-76.

Form 3962

Maintain a record showing location of each box and times of collection on Form 3962, *Letter Box Record—Hours of Collection*. Use reverse of this form to record information on maintenance of collection boxes such as painting, lubrication of locks, anchoring, date of replacement of decals, etc. Section 352.5 of the POSTAL SERVICE MANUAL will be amended accordingly.—*Delivery Services Dept.*, 5-20-76.

**EXPEDITE SERVICE—
SAVE MONEY—PROCESS
MAILBAGS FREQUENTLY**

MISSING OR STOLEN U.S. MONEY ORDER FORMS—DO NOT CASH

A. Old Style. The listing from PB 21070 is still valid.

B. New Style. The actual serial numbers consist only of the first 10 Digits. Destroy the PB 21077 article.

1616545152	to	1616545999	1892707100	to	1892707299	1981716500	to	1981716699
1625466141	to	1625466199	1893327400	to	1893327499	1982839495	to	1982840499
1628292249	to	1628292299	1893660200	to	1893660299	1987731000	to	1987731199
1636675839	to	1636675899	1895135524	to	1895135599	1988187449	to	1988187499
1636676082	to	1636676999	1895213400	to	1895213499	1990507805	to	1990507899
1657057000	to	1657057999	1896017500	to	1896017699	1990507905	to	1990507999
1659361877	to	1659361899	1896113800	to	1896113899	1990687689	to	1990687699
1688304300	to	1688304999	1901049379	to	1901049499	1995671359	to	1995671999
1689773900	to	1689774199	1901372592	to	1901372699	1999256854	to	1999256999
1691674300	to	1691674999	1903632600	to	1903632699	1999837384	to	1999837499
1698585200	to	1698585599	1907244212	to	1907244299	2002639419	to	2002639450
1744356292	to	1744356999	1911918635	to	1911918799	2002881886	to	2002881899
1756102798	to	1756103399	1911939000	to	1911939299	2010587233	to	2010587299
1767029971	to	1767029999	1913077598	to	1913077999	2012944901	to	2012944999
1780920242	to	1780920299	1914787700	to	1914787999	2012945006	to	2012945099
1784370351	to	1784370399	1916448498	to	1916448599	2013805500	to	2013805699
1794039620	to	1794039699	1916932939	to	1916932999	2018938400	to	2018938499
1797037653	to	1797037699	1917899900	to	1917900299	2020057900	to	2020058199
1799339500	to	1799339699	1920282400	to	1920282497	2021090400	to	2021090499
1800923292	to	1800923399	1920365000	to	1920365199	2022309769	to	2022309799
1807996946	to	1807996999	1925051436	to	1925051499	2023458092	to	2023458299
1808257640	to	1808257653	1926528400	to	1926528499	2025217286	to	2025217699
1813318858	to	1813318899	1926628500	to	1926628699	2025609787	to	2025609999
1813957442	to	1813957999	1932043571	to	1932043599	2026068306	to	2026068399
1818265752	to	1818265799	1932709981	to	1932709999	2026636200	to	2026636599
1818290300	to	1818290699	1932719600	to	1932719699	2028624211	to	2028624299
1818314461	to	1818314499	1932738600	to	1932738699	2028917000	to	2028917999
1818346000	to	1818346299	1937698700	to	1937698728	2032976000	to	2032977499
1819144840	to	1819144999	1937773334	to	1937773399	2033489900	to	2033489999
1819197396	to	1819197499	1938175400	to	1938175499	2036193700	to	2036193999
1824739233	to	1824739257	1938921759	to	1938921999	2036194350	to	2036194599
1825539600	to	1825539699	1940535900	to	1940535999	2039774500	to	2039774775
1827838800	to	1827838999	1942580000	to	1942580299	2041088000	to	2041089999
1829494387	to	1829494399	1943408185	to	1943408199	2041609600	to	2041609699
1830774967	to	1830774999	1943791168	to	1943791199	2043081700	to	2043081899
1836169142	to	1836169199	1944408645	to	1944408699	2043875944	to	2043875999
1838226129	to	1838226799	1945120446	to	1945120499	2044836000	to	2044837999
1843883400	to	1843883499	1945197600	to	1945198099	2045459800	to	2045460099
1848808124	to	1848808199	1946688200	to	1946688299	2050598458	to	2050598599
1849150336	to	1849150399	1951045661	to	1951045999	2054299000	to	2054299199
1849316300	to	1849316399	1952637000	to	1952638999	2055619034	to	2055619099
1851665361	to	1851665399	1953225400	to	1953225699	2057429400	to	2057429599
1851762800	to	1851762899	1955912600	to	1955912799	2058070042	to	2058070199
1852668054	to	1852668199	1956684632	to	1956684699	2058071000	to	2058071099
1854778755	to	1854778778	1956726600	to	1956726799	2063490600	to	2063490699
1855182904	to	1855182999	1957955926	to	1957955999	2067935600	to	2067936499
1860214162	to	1860214199	1959615000	to	1959615399	2071505324	to	2071505399
1863733724	to	1863733999	1960158738	to	1960158799	2073371600	to	2073372099
1864630328	to	1864630499	1960654800	to	1960654849	2083855000	to	2083856999
1866532500	to	1866532599	1960798060	to	1960798099	2090619332	to	2090619399
1868034851	to	1868034899	1968229058	to	1968229099	2099936003	to	2099936199
1868603500	to	1868604199	1970126582	to	1970126599	2101768200	to	2101768599
1870326017	to	1870326099	1973940231	to	1973940299	2116833100	to	2116833599
1873655276	to	1873655399	1974545484	to	1974545499	8005023000	to	8005023999
1875497143	to	1875497199	1974626100	to	1974626599	8006421254	to	8006421299
1875828852	to	1875829299	1975461931	to	1975461999	8006580878	to	8006580899
1880328380	to	1880328399	1975871000	to	1975871099	8007230601	to	8007230617
1890470937	to	1890470899	1979695008	to	1979695099			
1890779510	to	1890779599	1979755713	to	1979755724			

x

Warning Notice—Unrecovered Stolen Canadian Money Order Forms

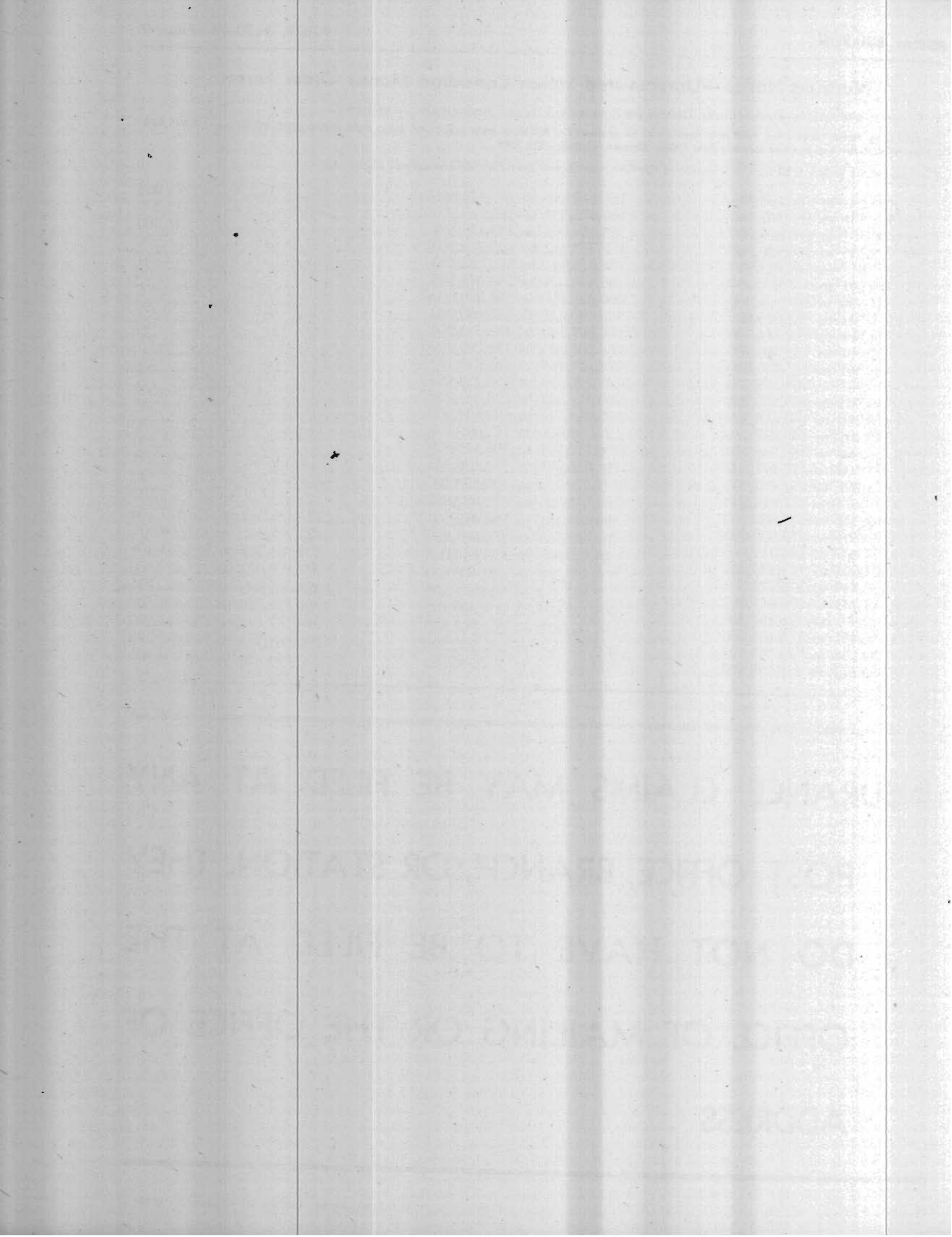
To be posted and used by window clerks. Destroy previous notices. Insert interim notices in sequence.

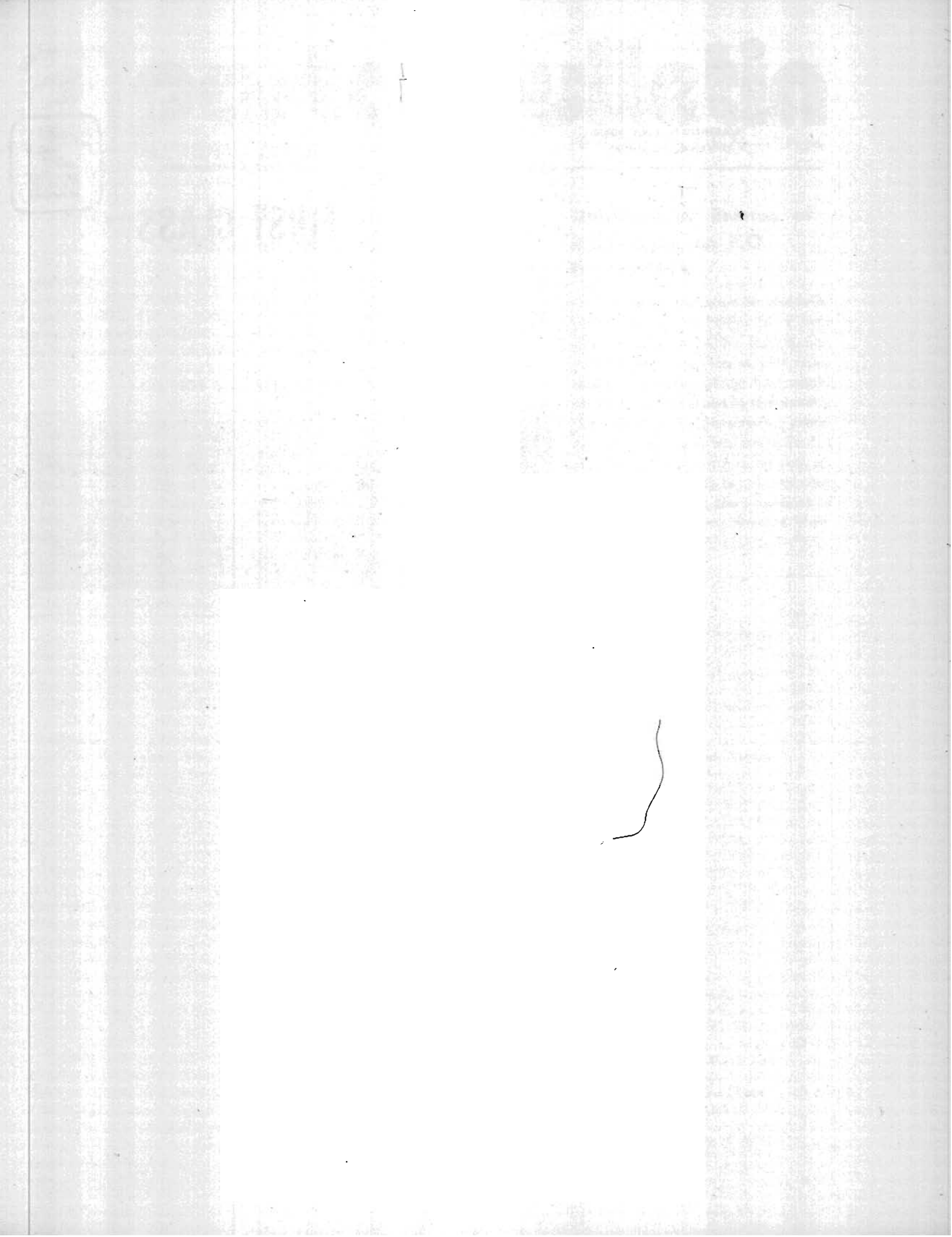
The following money orders are void and should not be cashed: (1) All card type orders. (2) New style orders 000,000,001—159,999,999. Advise holders to send them to Canada Post Office, Ottawa, Canada, KIA 0B1.

The new money order serial numbers consist of the first nine digits. The 10th digit is a check digit only.

160,193,201 to 160,193,300	180,446,855 to 180,446,866	203,249,018 to 203,249,061
160,507,331 to 160,507,400	182,975,501 to 182,976,200	203,416,199 to 203,416,300
160,606,501 to 160,606,900	183,457,601 to 183,458,300	207,218,569 to 207,218,600
160,919,925 to 160,920,000	183,769,412 to 183,769,500	207,886,401 to 207,886,600
160,921,817 to 160,921,900	185,028,741 to 185,028,800	208,872,242 to 208,872,257
161,799,901 to 161,800,000	186,446,001 to 186,446,500	209,190,001 to 209,195,000
161,981,006 to 161,981,900	186,820,405 to 186,820,900	210,301,801 to 210,302,000
162,015,701 to 162,015,800	188,460,651 to 188,460,700	210,835,285 to 210,835,300
162,314,201 to 162,314,700	188,669,520 to 188,670,000	210,935,633 to 210,935,700
162,600,001 to 162,600,200	189,205,701 to 189,205,800	212,900,201 to 212,900,300
163,420,501 to 163,420,800	189,217,169 to 189,217,400	213,256,201 to 213,256,700
163,573,201 to 163,573,900	189,278,454 to 189,278,464	213,345,001 to 213,345,100
165,349,901 to 165,350,200	189,357,868 to 189,357,878	213,504,865 to 213,505,000
165,618,226 to 165,618,300	190,053,526 to 190,054,000	216,823,954 to 216,824,000
166,278,201 to 166,278,500	192,099,601 to 192,099,800	217,621,979 to 217,622,100
166,951,587 to 166,951,700	196,116,101 to 196,116,600	217,622,401 to 217,622,800
170,477,105 to 170,477,200	198,036,801 to 198,036,900	218,660,066 to 218,660,700
171,471,801 to 171,472,100	198,520,743 to 198,520,800	219,494,026 to 219,494,130
171,815,673 to 171,816,000	199,531,501 to 199,531,600	223,944,901 to 223,945,000
173,562,701 to 173,563,700	199,662,401 to 199,662,500	224,126,989 to 224,127,100
173,890,301 to 173,890,500	199,662,562 to 199,662,600	225,395,301 to 225,396,000
174,317,402 to 174,317,500	199,843,031 to 199,843,050	226,781,246 to 226,781,400
175,434,677 to 175,434,900	200,400,512 to 200,400,600	227,129,004 to 227,129,400
176,226,349 to 176,226,700	200,467,313 to 200,467,500	229,083,686 to 229,083,700
176,413,353 to 176,413,400	201,328,601 to 201,329,300	229,428,120 to 229,428,300
176,780,901 to 176,781,200	201,963,699 to 201,963,800	239,162,130 to 239,162,200
178,155,401 to 178,155,500	201,980,250 to 201,980,299	239,863,796 to 239,863,870
178,759,158 to 178,759,197	202,545,957 to 202,546,000	239,864,826 to 239,864,900

**INSURANCE CLAIMS MAY BE FILED AT ANY
POST OFFICE, BRANCH, OR STATION. THEY
DO NOT HAVE TO BE FILED AT THE
OFFICE OF MAILING OR THE OFFICE OF
ADDRESS**





UNITED STATES POSTAL SERVICE

WASHINGTON, DC 20260

OFFICIAL BUSINESS

PENALTY FOR PRIVATE USE TO AVOID
PAYMENT OF POSTAGE, \$300



FIRST CLASS