



# POSTAL BULLETIN

INSTRUCTIONS AND INFORMATION FOR POSTAL EMPLOYEES

PUBLISHED WEEKLY



LXXX

Washington 25, D. C., Thursday, January 22, 1959—Eight Pages

20125

*All Postal Personnel*

## Campaign for National Health Agencies, Care, Crusade for Freedom, and the American-Korean Foundation

The Post Office Department is joining the other executive departments and agencies in a combined effort to give financial support to the 10 nationally recognized health agencies and joint crusade for CARE, Crusade for Freedom, and The American-Korean Foundation.

President Eisenhower has asked participation and support in a message dated September 25, 1958:

As Americans, we enjoy the tradition of sharing our material and spiritual benefits with our fellow men at home and abroad. Much of this good work is done through the research, educational and service programs of our national voluntary health agencies. During the 1959 Federal service campaign we shall be invited to support the programs of the following:

- American Cancer Society
- American Heart Association
- The Arthritis and Rheumatism Foundation
- Muscular Dystrophy Associations of America
- National Association for Mental Health
- National Multiple Sclerosis Society
- National Society for Crippled Children and Adults
- National Society for the Prevention of Blindness
- National Tuberculosis Association
- United Cerebral Palsy Associations

At the same time, to maintain the work of private charities aboard, we are invited to support the Federal service joint crusade agencies:

### CARE

Crusade for Freedom

The American-Korean Foundation

Knowing the great needs and capabilities of these voluntary agencies, I am sure Federal and military personnel will again respond to their annual appeals with generosity.

The national health agencies will campaign between January 1 and February 15, 1959, in any local area where the Red Cross conducts its traditional independent solicitation in March. However, if the Red Cross participates in a local united fund or community chest in your area and does not solicit independently in March, the national health agencies may conduct their campaign in any continuous 6-week period between January 1 and April 30, 1959. In this case, the State or local committee of the health agencies will provide information as to the exact period.

The national health agencies solicit concurrently with three international-relationship agencies that have been approved for on-the-job solicitation in the Federal service during the current fiscal year: The American-Korean Foundation, Inc., CARE, Inc., and Crusade for Freedom, Inc.

I add my support to this undertaking and urge all officials and employees of the Department to support this worthwhile campaign. Let us give voluntarily and generously.

*The Postmaster General.*

### *1st-Class Post Offices*

## Revised Procedure for Ordering Bulk Quantities of Stamps

Effective February 7, 1959, a new stamp requisitioning procedure will be placed in operation for ordering bulk quantities of stamps from the Bureau of Engraving and Printing. Under the revised procedure a punch card requisition will be used.

Postmasters requiring bulk stock during February shall order from the Office of Industrial Services, Bureau of Engraving and Printing, Washington 25, D.C., on Form 3308, *Bulk Stamp Requisition*, immediately or before February 6.

An initial supply of the new forms will be furnished postmasters without requisition. A revision to Part 422, Postal Manual, will be released before the effective date.—*Bureau of Facilities, 1-22-59.*

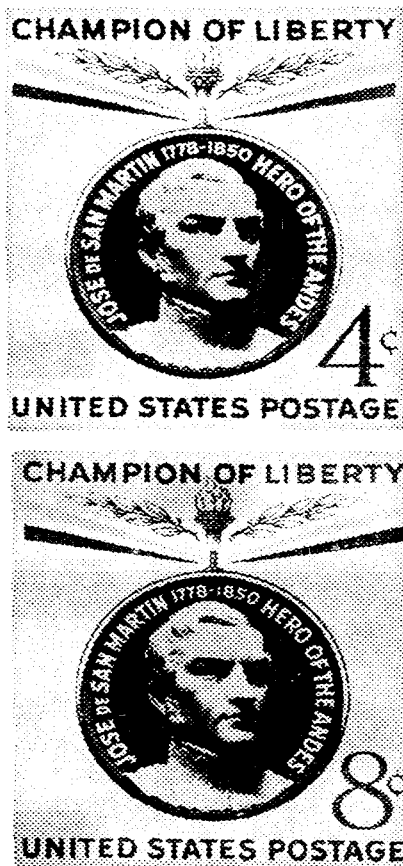
### CONTENTS

	<i>Page Col.</i>
4-cent and 8-cent Jose de San Martin Postage Stamps.....	2 1
13-Period Postal Fiscal Year Calendar (POD Notice 21).....	4 3
Box Rent Rates.....	3 1
Bulk Quantities of Stamps.....	1 3
Campaign for National Health Agencies .....	1 1
Conversion Rate Change for Money Orders Payable in France and Tunis.....	6 1
Estimate Forms for FY 1960.....	3 3
Evaluation of Rural Route.....	3 3
International Parcel Post Indemnity Claims .....	4 3
Mail for American Heart Association.....	2 3
Post Office Changes.....	6 3
Postal Manual Revisions.....	3 2
Removing Mail From Pouches and Sacks.....	4 1
Rotary Locks .....	3 1
Shortpaid Postage Charge Suspended .....	3 1
Special Cancellation, The Heart Fund .....	2 3
Stolen Canadian Money Order Forms .....	4 1
Stolen Money Order Forms.....	8 1
Unlawful Order.....	6 3

*All Postal Installations***4-cent and 8-cent  
Jose de San Martin  
Postage Stamps**

The Department will issue a 4-cent and an 8-cent Jose de San Martin stamp, the fourth in the "Champions of Liberty" series, through the Washington, D.C., post office, on February 25, 1959.

**POSTMASTERS SHALL NOT  
PLACE THESE STAMPS ON  
SALE BEFORE FEBRUARY  
26, 1959**



The stamps will be 0.85 by 0.98 of an inch in dimension (Famous American size), arranged vertically. The 4-cent denomination will be issued in sheets of 70 (7 across and 10 deep) while the 8-cent denomination will be issued in sheets of 72 (8 across by 9 deep). The 4-cent denomination will be printed on the Cottrell press in a single color—blue, and the 8-cent denomination will be printed on the Giori press in red, blue, and golden ochre. Initial printing orders of 120 million 4-cent and 40 million 8-cent San Martin stamps have been authorized.

Both denominations will feature a medallion with a three-quarter portrait of San Martin, reproduced from a print provided by the Library of Congress. The

wording "Jose de San Martin 1778-1850 Hero of the Andes" encircles the head. The medal is shown suspended from a ribbon, while directly above the pendant is a torch of liberty between two sprays of leaves. The wording "Champion of Liberty" forms the top of the stamp and "United States Postage" the bottom, both printed in modified Gothic. The denominations are shown in the lower right corners.

Collectors desiring first day cancellations of the 4-cent and 8-cent San Martin stamps may send addressed envelopes, together with remittance to cover the cost of the stamps to be affixed, to the Postmaster at Washington 13, D.C. **Collectors should plainly indicate in the upper right corner of the covers whether the 4-cent or 8-cent denomination is desired.**

An enclosure of medium weight should be placed in each envelope and the flap either turned in or sealed. Envelopes submitted should be of ordinary letter size and each must be properly addressed. An envelope must not be sent for return of first day covers. The outside envelope to the Postmaster should be endorsed "First Day Covers San Martin Stamps." Collectors should refrain from requesting hand cancellations since covers will be machine canceled so far as practicable. Orders for first day covers must not include requests for uncanceled stamps.

For the benefit of collectors desiring stamps of selected quality for philatelic use, the 4-cent and 8-cent San Martin stamps will be available at the Philatelic Sales Agency, Post Office Department, Washington 25, D.C., on and after February 25, 1959. To insure prompt shipment, mail orders to the agency should include no other stamp issues. **The Philatelic Sales Agency does not service first day covers.**

**Postmasters are reminded of the notice by the Postmaster General in the September 11, 1958, issue of the Postal Bulletin requiring Postmasters to submit requisitions for each new stamp issue as announced in the POSTAL BULLETIN so that ample quantities will be available at all post offices on the following day after official first day sale.**

Postmasters at first-class post offices requiring the 4-cent issue in lots of 35,000, and the 8-cent denomination in lots of 36,000, or multiples thereof, will submit **separate requi-**

*All Post Offices***Mail for the American  
Heart Association**

The Department has approved the request of the American Heart Association, and will again permit the use of the simple form of address, **Heart, c/o Postmaster**, during the 1959 national campaign, scheduled to run during the month of February 1959.

All letters will be handled in accordance with the instructions in the POSTAL BULLETIN of November 6, 1958, except that the mail will be delivered to the authorized representative of the American Heart Association in each of the designated central cities, in accordance with instructions given by letter to the postmasters from the headquarters office of the organization.—*Bureau of Operations, 1-22-59.*

*All Post Offices With  
Special Heart Fund Die Hubs***Special Cancellation  
The Heart Fund**

Postmasters who have special canceling machine die hubs reading **NEW HOPE FOR HEARTS SUPPORT THE HEART FUND**, shall use them during the period February 1 through February 28, 1959. After that time they shall be withdrawn and retained for future use.

These special hubs were bought by the sponsors and furnished to post offices designated by them. Postmasters at offices which do not have the hubs shall not submit requisitions or requests for them.—*Bureau of Operations, 1-22-59.*

**sitions immediately** for each denomination to the Office of Industrial Services, Bureau of Engraving and Printing, Washington 25, D.C. Offices requiring less than the above quantities shall submit **separate requisitions immediately** to their regional distributing office.

Postmasters shall post a copy of this notice on the bulletin board and give information to the press regarding the issuance of the 4-cent and 8-cent Jose de San Martin "Champion of Liberty" stamps.—*Office of the Special Assistant to the Postmaster General, 1-22-59.*

*All Postal Installations*

**Rotary Locks**

There is evidence to indicate that in many offices, units and installations Rotary locks in good condition are not being used because of certain dial readings. Instead, the locks are classed in the defective category and sent to the Mail Equipment Shops for repairs. A substantial portion of the purportedly defective Rotary locks reaching the Shops have dial readings of less than 999 and are found to be in serviceable condition.

Dial readings on a Rotary lock are not to be used in determining whether the lock is serviceable or un-serviceable or whether it shall be used or not used. The only exception is a reading of 9999 at which time the lock automatically freezes and must be sent to the Shops for servicing.

The adhesive substance in POD Label No. 60, *Defective Lock Label*, is of such nature that it is difficult for the Shops to remove the label from **Rotary locks**. Accordingly, in attaching this label to **Rotary locks only**, secure it through the lock shackle. **Do not put it around the lock.**—*Bureau of Facilities, 1-22-59.*

*All Post Offices*

**Shortpaid Postage Charge Suspended Indefinitely**

The period of suspension of the 5-cent shortpaid postage charge announced in the POSTAL BULLETIN of October 2, 1958, as terminating January 31, 1959, is hereby extended indefinitely.

While this suspension is in effect, continue to rate shortpaid and unpaid domestic mail for the deficient postage only and follow the procedures in section 147.12, Postal Manual.—*Bureau of Operations, 1-22-59.*

*All Post Offices*

**Box Rent Rates**

Strike out "April 5" and insert "April 1" in the second paragraph of the notice headed "Box Rent Rates" that appeared in the POSTAL BULLETIN dated January 15, 1959.—*Bureau of Operations, 1-22-59.*

*All Postal Installations*

**Postal Manual Revisions From October 31, 1958 Through January 5, 1959**

**Chapter 1, Post Office Services**

Issue 262, 11-10-58 (TL 48). Amended sections 125.74, 146.3, 146.4, 167.2, and 167.3.

Issue 265, 11-21-58 (TL 49). Amended section 114.2. Changed section 145.13.

Issue 267, 1-1-59 (TL 50). Amended sections 126.154, 126.166, 132.14, 132.33, 132.12, 134.1, 134.42. Revised sections 134.22c, 134.32, and 134.42.

Issue 272, 1-2-59 (TL 51). Amended sections 123.51, 141.211, 141.212, 141.214, 141.215, and 141.31.

**Chapter 2, International Mail**

Issue 271, 1-1-59 (TL 22). Amended sections 221.132 and 221.24.

**Chapter 3, Postal Procedures**

Issue 260, 10-31-58 (TL 65). Under *Distribution* amended sections 333.2 and 333.342; retitled section 333.313 *Familiarity With Schemes and Schedules*. Under *In Transit Mail Operations* amended sections 341.152a, 342.17, 342.26, and 342.37. Under *Collection and Delivery Services* amended sections 351.25, 352.232 through 352.234, and 352.74.

Issue 266, 11-26-58 (TL 66). Amended sections 311.6, 341.123a (8), and 371.11.

**Chapter 4, Finance, Budget, and Accounting**

Issue 276, 1-2-59 (TL 32). Amended sections 438.142a and 438.142c.

**Chapter 5, Transportation**

Issue 264, 11-20-58 (TL 23). Amended section 541.2.

Issue 274, 1-2-59 (TL 24). Amended sections 551.154a and 552.222.

**Chapter 6, Facilities**

Issue 273, 1-2-59 (TL 12). Revised sections 651.343b and 651.365b.

**Chapter 7, Personnel**

Issue 263, 11-12-58 (TL 47). Amended sections 753.111, 753.211, 753.311, 753.321a, 753.322a, 753.326b, 755.15. Added new sec-

*All Postal Installations Except 4th-Class Post Offices*

**Estimate Forms for FY 1960**

The same forms will be used for the submission of estimates for manpower and vehicle hours for FY 1960.

Refer to part 451, Postal Manual, and order only sufficient quantity of forms from supply centers for FY 1960 on Special Requisition Form 4750.—*Bureau of Operations, 1-22-59.*

*All Post Offices Having Rural Routes*

**Evaluation of Rural Route**

POD Form 4046, *Evaluation of Rural Route*, has been developed for use in determining whether a rural route is overburdened, and whether the carrier may be entitled to heavy duty allowance or relief. (See 353.142 Postal Manual.)

This form is now in stock in supply centers. Postmasters who have reason to believe they have rural routes requiring evaluation should requisition a small supply of Forms 4046 on Form 4750, *Special Requisition for Supplies*.

Section 353.14, Postal Manual, will be amended.—*Bureau of Operations, 1-22-59.*

tion 753.327, *Changes Affecting Employees Serving under Dual Appointments*.

Issue 277, 1-5-59 (TL 48). Amended section 756.44.

**Chapter 8, Organization and Administration**

Issue 261, 11-3-58 (TL 35). Added new section 821.9, *Board of Contract Appeals*.

Issue 268, 1-1-59 (TL 36). Amended sections 812.61c, 821.5, 822.1, 822.3, 822.34, and 823.43. Added new section 812.511 covering the delegation of authority to effect personnel actions in the field service. Revised 823.5, *Organization Chart for the Bureau of Personnel*.

Issue 275, 1-2-59 (TL 37). Amended section 844.128.

NOTE: Issue 269, General TL 7, 1-1-59 provided a new composite index for the Postal Manual.

Issue 270, General TL 8, 1-1-59 provided a new preface.

*All Post Offices***Warning Notice—Stolen  
Canadian Money Order Forms**

The following is a current list of Canadian money order forms reported stolen that have not been recovered. All previous notices should be destroyed. Keep this list current by addition of the serial numbers of interim notices published in the BULLETIN.

A-21,187,445 to A-21,187,500  
 A-21,232,349 to A-21,232,500  
 A-22,082,887 to A-22,083,000  
 A-22,540,912 to A-22,541,000  
 A-23,783,749 to A-23,783,764  
 A-25,255,082 to A-25,255,200  
 A-25,337,408 to A-25,337,500  
 A-26,854,262 to A-26,854,500  
 A-26,978,438 to A-26,978,464  
 A-28,234,728 to A-28,235,000  
 A-28,282,259 to A-28,282,400  
 A-29,170,914 to A-29,170,950  
 A-29,588,828 to A-29,589,000  
 A-29,613,393 to A-29,613,437  
 A-29,805,448 to A-29,805,600  
 A-30,123,701 to A-30,123,748  
 A-30,397,555 to A-30,397,568  
 A-30,413,761 to A-30,413,900  
 A-30,420,333 to A-30,420,500  
 A-31,578,849 to A-31,579,000  
 A-31,615,856 to A-31,616,000  
 A-31,646,308 to A-31,646,325  
 A-32,982,209 to A-32,982,300  
 A-33,127,927 to A-33,127,950  
 A-35,772,418 to A-35,772,500  
 A-36,078,050 to A-36,078,500  
 A-36,236,979 to A-36,236,987  
 A-36,308,031 to A-36,308,200  
 A-36,969,279 to A-36,969,300  
 A-37,157,272 to A-37,157,400  
 A-37,302,422 to A-37,302,500  
 A-37,525,838 to A-37,525,900  
 A-38,133,156 to A-38,133,158  
 A-38,145,825 to A-38,145,900  
 A-38,363,839 to A-38,363,850  
 A-39,271,580 to A-39,271,600  
 A-39,407,101 to A-39,407,300  
 A-39,905,172 to A-39,905,182  
 A-40,002,986 to A-40,003,000

A-40,019,179 to A-40,020,000  
 A-40,077,676 to A-40,077,680  
 A-40,169,163 to A-40,169,500  
 A-40,670,501 to A-40,670,550  
 A-40,805,035 to A-40,805,500  
 A-41,661,231 to A-41,661,300  
 A-42,603,562 to A-42,604,000  
 A-42,953,420 to A-42,953,438  
 A-43,127,354 to A-43,127,370  
 A-44,433,229 to A-44,433,272  
 A-45,237,334 to A-45,237,500  
 A-45,804,824 to A-45,805,000  
 A-46,404,304 to A-46,404,500  
 A-46,894,211 to A-46,894,500  
 A-46,945,604 to A-46,945,700  
 A-47,600,644 to A-47,600,678  
 A-48,532,686 to A-48,533,000  
 A-48,686,001 to A-48,688,000  
 A-48,872,467 to A-48,873,000  
 A-49,445,077 to A-49,445,093  
 A-50,189,724 to A-50,189,900  
 A-52,108,628 to A-52,108,700  
 A-52,137,831 to A-52,138,000  
 A-52,259,894 to A-52,260,000  
 A-52,291,588 to A-52,291,600  
 A-52,319,108 to A-52,319,126  
 A-55,213,742 to A-55,213,800  
 A-55,607,859 to A-55,607,900  
 A-55,715,540 to A-55,715,580  
 A-57,548,806 to A-57,548,900  
 A-57,691,501 to A-57,692,000  
 A-57,729,242 to A-57,729,300  
 A-57,770,478 to A-57,770,500  
 A-58,851,471 to A-58,851,500  
 A-58,999,158 to A-58,999,300  
 A-59,407,701 to A-59,407,950  
 A-59,870,701 to A-59,871,000  
 A-59,908,001 to A-59,908,500  
 A-59,938,670 to A-59,938,700

*All Postal Installations***Removing Mail From  
Pouches and Sacks**

Section 333.341, Postal Manual, provides that each opened pouch and sack shall be carefully examined to insure that no mail is left therein. The quantity of mail overlooked and subsequently removed at mail bag depositories and other postal installations indicates need for closer compliance with this regulation.

Supervisors shall immediately instruct all personnel responsible for removing mail from pouches and sacks as to the proper method of examination of such equipment, and shall check thereafter to see that proper examination is performed.

Installation heads, field services officers, and other officials shall insure prompt corrective action where lax enforcement of this regulation is observed.—*Bureau of Operations, 1-22-59.*

*All Postal Installations***13-Period Postal Fiscal  
Year Calendar (POD  
Notice 21)**

The new POD 13-period year calendar for postal fiscal year 1960 is shown on the next page. Detach from the BULLETIN for office use.

National holidays are shown on the calendar. For further assistance, postmasters and other installation managers should identify on the calendar other special days that have a significant effect on mail volume in their respective offices. These days include Easter, Mother's Day, Valentine's Day, Father's Day, etc., as well as State holidays.

A limited supply of the calendar form will be available *after* March 1, 1959, in supply centers. Only larger post offices and other large field installations needing extra copies should requisition such supply.—*Bureau of Finance, 1-22-59.*

*All Post Offices***Erroneous International  
Parcel Post  
Indemnity Claims**

Adjusting exchange offices are frequently receiving indemnity claims for damage to parcels from other countries which were filed in the belief that the numbers on the packages indicate they are insured.

The numbers alone do not mean that the parcels are insured. Each insured package bears definite insurance indicia very near the number. The language of the indicia may vary by countries.

Facsimiles of insurance indicia used on most insured parcels from other countries are found in section 387.221 of the Postal Manual. The tabulated data under the country items in the Directory of International Mail show whether insurance service is available.

Postmasters should guard against accepting indemnity claims based only on the fact that the parcels bear numbers.—*Bureau of Transportation, 1-22-59.*

POST OFFICE DEPARTMENT																						
13 PERIOD YEAR CALENDAR - PFY'S 1959 AND 1960																						
POSTAL QUARTER	ACCOUNTING PERIOD	PAY PERIOD	WEEK	POSTAL FISCAL 1959 (June 28, 1958 through June 26, 1959)							POSTAL FISCAL 1960 (June 27, 1959 through June 24, 1960)							MONTH	HOLIDAYS			
				S	S	M	T	W	T	F	S	S	M	T	W	T	F					
I	1	15	1	28	29	30					4	27	28	29	30					3	JUL	Independence Day
		16	2	5							11	4								10		
			3	12							18	11								17		
			4	19							25	18								24		
	2	17	5	26							1	25								31	AUG	
		18	6	2							8	1								7		
			7	9							15	8								14		
			8	16							22	15								21		
	3	19	9	23							29	22								28	SEP	Labor Day
		20	10	30		1					5	29								4		
			11	6							12	5		7						11		
			12	13							19	12								18		
4	21	13	20							26	19								25	OCT		
	22	14	27							3	26								2			
		15	4							10	3								9			
		16	11							17	10								16			
II	5	23	17	18						24	17								23	NOV	Veteran's Day	
		24	18	25							31	24							30			
			19	1							7	31										6
			20	8			11				14	7			11							13
	6	25	21	15							21	14								20	DEC	Thanksgiving Day
		26	22	22						27	28	21				26	27			4		
			23	29							5	28								4		
			24	6							12	5								11		
	7	1	25	13							19	12								18	JAN	Christmas Day New Year's Day
		2	26	20						25	26	19								25		
			27	27						1	2	26								1		
			28	3							9	2								8		
III	8	3	29	10						16	9								15	FEB	Washington's Birthday	
		4	30	17							23	16							22			
			31	24							30	23										29
			32	31							6	30										5
	9	5	33	7							13	6								12	MAR	
		6	34	14							20	13								19		
			35	21			23				27	20			22					26		
			36	28							6	27								4		
	10	7	37	7							13	5								11	APR	
		8	38	14							20	12								18		
			39	21							27	19								25		
			40	28							3	26								1		
IV	11	9	41	4						10	2								8	MAY		
		10	42	11							17	9							15			
			43	18							24	16										22
			44	25							1	23										29
	12	11	45	2							8	30								6	JUN	Memorial Day
		12	46	9							15	7								13		
			47	16							22	14								20		
			48	23							29	21								27		
	13	13	49	30							5	28			30					3		
		14	50	6							12	4								10		
			51	13							19	11								17		
			52	20							26	18								24		

This two-year calendar conforms to the Post Office Department's 13-period accounting year. Dates in Fiscal Years 1959 and 1960 are aligned to facilitate comparison of current with past operation.

International Money Order Offices

**Conversion Rate Change for Money Orders Payable in France and Tunis**

Effective immediately, the conversion rate for money orders issued in the United States for payment in France and Tunis will be 1 Franc equals  $\frac{21}{100}$  of 1 cent.

The following table No. 43-B should be used in making the conversion and inserted in its proper sequence in the pamphlet of *Conversion Tables*, Form 6749a, 1948 edition.

Postmasters are reminded that the conversion of United States money into the foreign equivalent by the issuing employee should be made only in those instances when the purchaser specifically requests an order expressed in Francs.—*Bureau of Finance, 1-22-59.*

TABLE 43-B  
Rate, 1 franc (or other unit of foreign money) =  $\frac{21}{100}$  of 1 cent  
FROM ONE CENT TO ONE HUNDRED DOLLARS

Cents	Francs	Centimes	Cents	Francs	Centimes	Dollars	Francs	Centimes	Dollars	Francs	Centimes
1.....	4	76	51.....	242	86	1.....	476	19	51.....	24,285	69
2.....	9	52	52.....	247	62	2.....	952	38	52.....	24,761	88
3.....	14	29	53.....	252	38	3.....	1,428	57	53.....	25,238	07
4.....	19	05	54.....	257	14	4.....	1,904	76	54.....	25,714	26
5.....	23	81	55.....	261	90	5.....	2,380	95	55.....	26,190	45
6.....	28	57	56.....	266	67	6.....	2,857	14	56.....	26,666	64
7.....	33	33	57.....	271	43	7.....	3,333	33	57.....	27,142	83
8.....	38	10	58.....	276	19	8.....	3,809	52	58.....	27,619	02
9.....	42	86	59.....	280	95	9.....	4,285	71	59.....	28,095	21
10.....	47	62	60.....	285	71	10.....	4,761	90	60.....	28,571	40
11.....	52	38	61.....	290	48	11.....	5,238	09	61.....	29,047	59
12.....	57	14	62.....	295	24	12.....	5,714	28	62.....	29,523	78
13.....	61	90	63.....	300	00	13.....	6,190	47	63.....	29,999	97
14.....	66	67	64.....	304	76	14.....	6,666	66	64.....	30,476	16
15.....	71	43	65.....	309	52	15.....	7,142	85	65.....	30,952	35
16.....	76	19	66.....	314	29	16.....	7,619	04	66.....	31,428	54
17.....	80	95	67.....	319	05	17.....	8,095	23	67.....	31,904	73
18.....	85	71	68.....	323	81	18.....	8,571	42	68.....	32,380	92
19.....	90	48	69.....	328	57	19.....	9,047	61	69.....	32,857	11
20.....	95	24	70.....	333	33	20.....	9,523	80	70.....	33,333	30
21.....	100	00	71.....	338	09	21.....	9,999	99	71.....	33,809	49
22.....	104	76	72.....	342	86	22.....	10,476	18	72.....	34,285	68
23.....	109	52	73.....	347	62	23.....	10,952	37	73.....	34,761	87
24.....	114	29	74.....	352	38	24.....	11,428	56	74.....	35,238	06
25.....	119	05	75.....	357	14	25.....	11,904	75	75.....	35,714	25
26.....	123	81	76.....	361	90	26.....	12,380	94	76.....	36,190	44
27.....	128	57	77.....	366	67	27.....	12,857	13	77.....	36,666	63
28.....	133	33	78.....	371	43	28.....	13,333	32	78.....	37,142	82
29.....	138	10	79.....	376	19	29.....	13,809	51	79.....	37,619	01
30.....	142	86	80.....	380	95	30.....	14,285	70	80.....	38,095	20
31.....	147	62	81.....	385	71	31.....	14,761	89	81.....	38,571	39
32.....	152	38	82.....	390	48	32.....	15,238	08	82.....	39,047	58
33.....	157	14	83.....	395	24	33.....	15,714	27	83.....	39,523	77
34.....	161	90	84.....	400	00	34.....	16,190	46	84.....	39,999	96
35.....	166	67	85.....	404	76	35.....	16,666	65	85.....	40,476	15
36.....	171	43	86.....	409	52	36.....	17,142	84	86.....	40,952	34
37.....	176	19	87.....	414	29	37.....	17,619	03	87.....	41,428	53
38.....	180	95	88.....	419	05	38.....	18,095	22	88.....	41,904	72
39.....	185	71	89.....	423	81	39.....	18,571	41	89.....	42,380	91
40.....	190	48	90.....	428	57	40.....	19,047	60	90.....	42,857	10
41.....	195	24	91.....	433	33	41.....	19,523	79	91.....	43,333	29
42.....	200	00	92.....	438	09	42.....	19,999	98	92.....	43,809	48
43.....	204	76	93.....	442	86	43.....	20,476	17	93.....	44,285	67
44.....	209	52	94.....	447	62	44.....	20,952	36	94.....	44,761	86
45.....	214	29	95.....	452	38	45.....	21,428	55	95.....	45,238	05
46.....	219	05	96.....	457	14	46.....	21,904	74	96.....	45,714	24
47.....	223	81	97.....	461	90	47.....	22,380	93	97.....	46,190	43
48.....	228	57	98.....	466	67	48.....	22,857	12	98.....	46,666	62
49.....	233	33	99.....	471	43	49.....	23,333	31	99.....	47,142	81
50.....	238	10	100.....	476	19	50.....	23,809	50	100.....	47,619	00

All Post Offices

**Unlawful Order Against "Libra" at Amsterdam, Holland**

The attention of all postmasters is directed to Unlawful Order No. 56468 issued October 11, 1957, against "Libra" at Amsterdam, Holland. The Department has received information that despite the provisions of this order mail is being dispatched to the concern named. All postal personnel handling mail for dispatch to Holland should be requested to fully enforce this order.—*Office of the General Counsel, 1-22-59.*

**POST OFFICE CHANGES NO. 30**

ALABAMA

Anniston: Money Order Unit Nos. 2, 3 and 4, Calhoun County, *estab.* effective Jan. 10, 1959.

CALIFORNIA

Santa Barbara: Milpas (classified Station), Santa Barbara County, *estab.* effective Jan. 19, 1959.

05-20940 Del Mar, San Diego County (1st class): *City delivery service estab.* effective Mar. 7, 1959.

FLORIDA

11-55650 Maitland, Orange County (2d class): *City delivery service estab.* effective Feb. 7, 1959.

Miami: Notice *estab.* Ponce (contract Station), Dade County, effective Jan. 16, 1959, which appeared in the POSTAL BULLETIN of Dec. 31, 1958, is *modified* to show the establishment as a branch post office.

11-87800 Summerland Key, Monroe County (3d class), *disc.* effective Feb. 28, 1959. Mail to Key West, Fla.

Pensacola: Town and Country Plaza (contract Branch), Escambia County, *estab.* effective Feb. 1, 1959.

Venice: Warm Mineral Springs (rural Station), Sarasota County, *estab.* effective Feb. 1, 1959.

GEORGIA

Gainesville: Chestnut Mountain (rural Station), Hall County, *estab.* effective Feb. 1, 1959. (This station will be *independent* for the receipt and dispatch of registered and other mail).

INDIANA

17-41470 Jonesboro, Grant County (2d class), *disc.* effective Feb. 28, 1959. Mail to Marion, Ind.

Marion: Jonesboro (classified Branch), Grant County, *estab.* effective Mar. 1, 1959.

KENTUCKY

20-35400 Hardshell, Breathitt County (4th class), *disc.* effective Feb. 28, 1959. Mail to Lost Creek, Ky.

Lost Creek: Hardshell (rural Station), Breathitt County, *estab.* effective Mar. 1, 1959.

(Continued on p. 7)

**POST OFFICE CHANGES NO. 30**

*(Continued from p. 6)*

20-35560 Hargis, Pulaski County (4th class), *disc.* effective Feb. 28, 1959. Mail to Alpine, Ky.  
 20-80120 Vine Grove, Hardin County (2d class): *City delivery service* estab. effective Feb. 9, 1959.

**MICHIGAN**

25-25900 Douglas, Allegan County (2d class): *International money order* business *disc.* effective Jan. 9, 1959.  
 25-93800 Troy, Oakland County (2d class): *City delivery service* estab. effective Jan. 24, 1959.

**MISSOURI**

28-10800 Buckhorn, Madison County (4th class), *disc.* effective Jan. 31, 1959. Mail to Marquand, Mo.  
 28-30060 Gashland, Clay County (2d class), *disc.* effective Feb. 28, 1959. Mail to Kansas City, Mo.

28-30810 Gladstone, Clay County (2d class), *disc.* effective Feb. 28, 1959. Mail to Kansas City, Mo.

**NEW HAMPSHIRE**

32-38700 Hebron, Grafton County (4th class), *disc.* effective Jan. 31, 1959. Mail to Bristol, N. H.  
 Bristol: Hebron (rural Station), Grafton County, *estab.* effective Feb. 1, 1959.

**NEW JERSEY**

33-10200 Bridgeboro, Burlington County (3d class), *disc.* effective Jan. 31, 1959. Mail to Riverside, N. J.

**NORTH CAROLINA**

36-28160 Franklin, Macon County (1st class): *City delivery service* estab. effective Feb. 7, 1959.

**OHIO**

Columbus: No. 18 (contract Station), Franklin County, *reestab.* effective Mar. 1, 1959.

**OKLAHOMA**

39-17820 Clearview, Okfuskee County (4th class): Notice *disc.* this office effective Jan. 31, 1959, which appeared in BULLETIN of Jan. 15, 1959, is *rescinded*.

**PENNSYLVANIA**

41-32800 Graterford, Montgomery County (2d class), *disc.* effective Feb. 28, 1959. Mail to Collegeville, Pa.  
 41-68880 Rahns, Montgomery County (3d class), *disc.* effective Feb. 28, 1959. Mail to Collegeville, Pa.

**TEXAS**

Austin: No. 6 (contract Station), Travis County, *reestab.* effective Jan. 5, 1959.  
 Marble Falls, Burnet County: Cypress Mill (rural Station), Blanco County, *estab.* effective Jan. 2, 1959.

**WASHINGTON**

Spokane: Geiger Field (classified Branch), Spokane County, *estab.* effective Feb. 1, 1959.  
 Tacoma: No. 2 (contract Station), Pierce County, *disc.* effective Sept. 25, 1958.

# Are You a Safe Driver?

## Keep a Watchful Eye for Small Fry

## All Post Offices

**Warning Notice—Stolen Money Order Forms**

The following is a current list of stolen money order forms that have not been recovered. Post this notice at windows for information of clerks. Destroy all previous notices.

1-37,344,579 to 1-37,344,700	6-31,718,090 to 6-31,718,500	10-87,418,344 to 10-87,418,400
1-37,601,124 to 1-37,601,140	6-34,171,976 to 6-34,172,000	10-88,348,647 to 10-88,348,800
1-44,141,472 to 1-44,141,700	6-37,570,301 to 6-37,570,400	10-88,457,001 to 10-88,457,300
1-46,553,723 to 1-46,553,739	6-39,344,407 to 6-39,345,000	10-88,976,018 to 10-88,976,500
1-55,174,898 to 1-55,175,000	6-40,948,563 to 6-40,948,700	10-97,741,943 to 10-97,742,000
1-85,848,756 to 1-85,848,800	6-43,599,985 to 6-43,600,000	11-51,349,593 to 11-51,350,000
1-86,256,184 to 1-86,256,212	6-45,010,322 to 6-45,011,000	11-54,185,656 to 11-54,186,000
2-34,741,803 to 2-34,741,815	6-46,096,793 to 6-46,097,000	11-58,135,872 to 11-58,186,000
2-39,862,273 to 2-39,862,500	6-50,691,515 to 6-50,692,000	11-58,651,387 to 11-58,651,500
2-40,244,413 to 2-40,244,500	6-55,875,923 to 6-55,876,000*	11-58,940,279 to 11-58,940,305
2-42,065,412 to 2-42,066,000	6-56,151,641 to 6-56,151,700	11-59,018,727 to 11-59,018,799
2-83,739,292 to 2-83,739,333	6-56,895,057 to 6-56,896,000	11-59,538,097 to 11-59,538,300
2-83,792,001 to 2-83,792,200	6-82,916,303 to 6-82,916,366	11-60,411,237 to 11-60,411,251
2-83,993,657 to 2-83,994,000	6-82,967,687 to 6-82,968,000	11-61,695,736 to 11-61,696,000
2-94,483,181 to 2-94,483,300	6-84,235,483 to 6-84,235,550	11-63,813,813 to 11-63,813,818
3-58,600,923 to 3-58,601,000	6-84,580,335 to 6-84,580,400	11-64,475,734 to 11-64,476,000
3-59,849,318 to 3-59,849,500	6-84,56,850 to 6-84,757,200	11-66,129,362 to 11-66,129,500
3-68,908,901 to 3-68,909,200	7-5,858,431 to 7-5,858,468	11-66,130,021 to 11-66,130,029
3-70,355,884 to 3-70,355,900	7-9,035,905 to 7-9,036,000	11-66,130,067 to 11-66,130,072
3-71,677,339 to 3-71,677,352	7-14,062,682 to 7-14,063,000	11-66,402,428 to 11-66,402,500
3-86,463,001 to 3-86,464,000	7-19,240,548 to 7-19,240,600	11-72,019,399 to 11-72,019,479
3-86,931,011 to 3-86,931,500	7-21,838,129 to 7-21,838,166	11-81,181,782 to 11-81,182,000
3-87,114,633 to 3-87,114,700	7-24,312,079 to 7-24,312,500	11-81,932,188 to 11-81,932,500
3-87,510,761 to 3-87,511,200	7-25,626,285 to 7-25,626,464	11-82,036,223 to 11-82,036,400
4-4,594,629 to 4-4,594,800	7-26,000,499 to 7-26,000,700	11-82,496,198 to 11-82,496,200
4-5,783,481 to 4-5,783,500	7-30,316,302 to 7-30,316,311	11-82,724,382 to 11-82,725,000
4-10,780,654 to 4-10,780,674	7-31,109,881 to 7-31,110,000	11-83,284,001 to 11-83,284,200
4-15,916,561 to 4-15,916,599	7-32,868,555 to 7-32,868,569	12-17,879,004 to 12-17,879,021
4-18,795,667 to 4-18,795,700	7-39,078,001 to 7-39,080,000	12-24,983,586 to 12-24,983,593
4-18,817,675 to 4-18,818,000	7-87,356,570 to 7-87,356,605	12-26,172,950 to 12-26,173,000
4-18,847,836 to 4-18,850,000	8-4,407,001 to 8-4,407,200	12-30,682,501 to 12-30,683,000
4-20,141,820 to 4-20,142,000	8-6,589,683 to 8-6,590,000	12-31,589,109 to 12-31,589,150
4-20,188,082 to 4-20,188,500	8-12,995,186 to 8-12,995,190	12-38,391,712 to 12-38,391,800
4-22,271,198 to 4-22,272,000	8-38,940,744 to 8-38,941,000	12-39,697,373 to 12-39,698,000
4-23,243,751 to 4-23,244,000	8-39,523,801 to 8-39,524,000	12-40,224,301 to 12-40,224,400
4-23,611,868 to 4-23,612,000	8-40,353,101 to 8-40,353,200	12-40,709,677 to 12-40,709,700
4-26,340,001 to 4-26,341,000	8-40,423,315 to 8-40,423,600	12-42,860,314 to 12-42,860,400
4-27,980,401 to 4-27,980,800	8-50,442,100 to 8-50,442,683	13-19,102,921 to 13-19,103,000
4-29,713,945 to 4-29,714,000	8-90,336,575 to 8-90,336,800	13-19,364,001 to 13-19,364,500
4-35,270,001 to 4-35,274,000	8-90,723,407 to 8-90,723,500	13-19,615,892 to 13-19,616,000
4-44,427,287 to 4-44,428,000*	9-26,024,045 to 9-26,024,300	13-19,711,551 to 13-19,711,575
4-78,760,051 to 4-78,760,500	9-27,991,679 to 9-27,991,692	13-20,566,208 to 13-20,566,400
4-81,622,351 to 4-81,622,400	9-27,993,371 to 9-27,993,394*	13-20,612,264 to 13-20,612,270
4-82,722,161 to 4-82,722,300	9-64,267,747 to 9-64,268,000	14-4,581,379 to 14-4,581,400
4-83,504,212 to 4-83,504,400	9-64,280,170 to 9-64,280,200	14-9,101,030 to 14-9,101,100
5-28,970,590 to 5-28,971,000	9-66,687,166 to 9-66,687,175	14-9,101,236 to 14-9,101,338
5-31,919,336 to 5-31,919,400	9-75,444,064 to 9-75,444,250	14-9,101,356 to 14-9,101,369
5-32,783,101 to 5-32,783,500	9-75,924,935 to 9-75,925,000	14-14,111,026 to 14-14,111,200
5-34,917,870 to 5-34,917,900	9-76,110,986 to 9-76,111,000	14-14,133,742 to 14-14,133,750
5-73,941,902 to 5-73,942,000*	9-82,407,523 to 9-82,408,000	14-14,572,218 to 14-14,572,277
5-74,030,082 to 5-74,030,200	10-4,273,306 to 10-4,273,310	14-14,572,406 to 14-14,572,499
5-74,533,528 to 5-74,533,600	10-22,755,253 to 10-22,755,500	15-4,642,816 to 15-4,643,000
5-75,406,301 to 5-75,406,600	10-23,331,264 to 10-23,331,500	15-4,676,754 to 15-4,676,800
5-97,851,229 to 5-97,852,000	10-41,138,258 to 10-41,138,500	15-16,261,001 to 15-16,262,000
5-98,835,997 to 5-98,836,000	10-86,542,821 to 10-86,546,000	15-16,468,616 to 15-16,468,800
6-13,629,820 to 6-13,629,900	10-86,566,471 to 10-86,566,600	15-18,149,790 to 15-18,149,900
6-25,049,914 to 6-25,050,000	10-86,936,101 to 10-86,936,500	15-20,339,901 to 15-20,340,000

\*Published for first time.

20125, Jan. 22, 1959, Page 8