

P1.3
21837



UNITED STATES
POSTAL SERVICE

P. S. U.

PUBLISHED SINCE MARCH 4, 1880

Postal Bulletin

PB 21837—MARCH 18, 1993—48 PAGES

JUN 16 1993

DEPOSITORY

Letter-Size Automation Rate Mailings

Postal Bulletin 21833, 1-21-93, outlined the use of the extended managed mail (EMM) trays for letter-size automation rate mailings.

EMM trays are for mailer use only and not for internal use in postal facilities. These trays are 24 inches long by 11¾ inches wide by 6¼ inches high. They are white, corrugated plastic with Property of U.S. Postal Service on the sides in red letters. The corresponding cardboard sleeve also includes Property of U.S. Postal Service on the sides in red letters.

EMM trays are currently going to mail transport equipment (MTE) warehouses throughout the country. The Equipment Inventory Reporting System (EIRS) has their item numbers: 74E for the EMM tray and 75E for the corresponding sleeve. All EIRS reporting facilities must inventory and enter these items into the system using the same frequency of reporting as required for other EIRS items.

To ensure continued availability of these trays for mailer use, do not hold them at postal facilities. Instead, postal personnel must continually gather all empty EMM trays and return them to their serving general mail facility (GMF).

Once the GMF accumulates enough trays to prepare a pallet, they must prepare it according to section 471 of Handbook PO-502, *Container Methods* (September 1992). The GMF then forwards these trays to the local bulk mail center (BMC) for shipment.

BMCs in the Pacific, Western, Midwest, Southwest, Southeast, and Great Lakes Areas should ship their trays to the Chicago BMC. BMCs in the Northeast, New York Metro, Allegheny, and Mid-Atlantic Areas ship them to the Philadelphia BMC. The destinating BMC may change from Chicago BMC to Philadelphia BMC or Philadelphia BMC to Chicago BMC when transportation dictates.

Once the EMM trays reach either the Chicago BMC or Philadelphia BMC, these trays will go to the MTE warehouse to ensure proper packaging and rapid turnaround to mailers. Coordinate movement of EMM trays into or out of the MTE warehouses with the area mail transport equipment specialist (AMTES) at the Great Lakes Area Office for the Chicago BMC and the Allegheny Area Office for the Philadelphia BMC.

—Transportation, 3-18-93

Treasury Department Checks

Social Security benefit checks normally delivered on the third of the month are scheduled for delivery on Friday, April 2, 1993. The envelopes will bear the legend:

Postmaster: Requested delivery date is
the second day of the
month.

—Operations Support, 3-18-93

1992 Annual Index:

PB 21834, 2-4-93

CONTENTS

	Page
APO/FPO ZIP Code Realignment (<i>Reminder</i>)	2
Changes to Automated Rate Preparation	2
Conditions Applied to Mail Addressed to Military Post Offices Overseas	7
Delivery Point Barcodes to Obtain Letter-Size Bar- coded Rates (<i>DMM Revision</i>)	29
Directives and Forms Update	36
Domestic Orders	37
Form 8105, <i>Money Order Transaction Report</i>	3
Guidelines for Palletizing Second- and Third-Class Mail Prepared in Trays	4
Invalid Express Mail Corporate Account Numbers..	45
Letter-Size Automation Rate Mailings	1
Mail Alert	41
Missing Children Poster	25
Missing Money Orders—Canadian	43
Missing Money Orders—U.S.	40
Police Records (<i>Handbook EL-311 Revision</i>)	2
Price List for Supply Items	15
Revenue Unit, FY 1992	2
Setting Clocks for Daylight Saving Time (<i>Remind- er: All IRT, WRU, CTT Offices</i>)	3
Special Cancellations	3
Stamp Announcement 93-5 (<i>Cherokee Strip Com- memorative Stamp</i>)	6
Stamp Announcement 93-6 (<i>Circus Commemora- tive Stamps</i>)	24
Stamp Announcement 93-7 (<i>Thomas Jefferson Stamp</i>)	35
Stamps Recalled From Philatelic Fulfillment	5
Treasury Department Checks	1
Verifying Identity When Delivering Hold Mail	2
Withholding of Mail Orders	34

Verifying Identity When Delivering Hold Mail

Several instances of fraudulent mail holds have come to the attention of the Postal Inspection Service. Fraudulent mail holds occur when a person submits a request to hold mail for another person, family, or business. Then, the person who initiated the mail hold comes to the post office requesting to pick up that mail and receives it without question or request for proper identification to verify that the person is the addressee. Thus, persons submitting fraudulent mail holds are able to steal mail with the unknowing cooperation of Postal Service employees.

U.S. Postal Service policy (Domestic Mail Manual 153.11e) states that:

Where a person claiming to be the addressee of certain mail is unknown to the postmaster (clerk, etc.), the mail may be withheld, pending identification of the claimant.

When a person claiming hold mail is not known, the postal employee must request identification before delivering the hold mail. True addressees should view requests to present identification in a positive manner because it demonstrates USPS commitment to protect their mail.

While most attempts to fraudulently obtain another person's mail occur in post offices, some attempts may occur when carriers deliver mail on their routes. Caution city and rural carriers about this possibility. They should know the proper procedure if asked for mail by persons on their routes.

Handbook PO-603, *Rural Carriers Duties and Responsibilities*, section 321.7, advises rural carriers to: Deliver to a customer at any place on the route if the customer's identity is known and you will not be unreasonably delayed. Methods Handbook M-41, *City Delivery Carriers Duties and Responsibilities*, section 131.34, advises city carriers to: Exhibit mail to the addressee only. Delivery may be made to a customer on the street if it does not delay the carrier unreasonably.

If the carrier does not know the person requesting mail, the carrier should request identification that includes the person's street address. If such identification is not presented, the carrier should decline the request and deliver the mail to the proper address.

DMM section 153.11e will be revised to reflect the requirement for proper identification more accurately if a customer is not known to the postal employee.

—Customer Service Support, 3-18-93

REMINDER

APO/FPO ZIP Code Realignment

The APO/FPO ZIP Code alignment transition period ended February 1993. Mail addressed to APO/FPO ZIP Codes shown as Not Active as a result of the APO/FPO ZIP CODE alignment program will be returned to sender effective April 19.—*Transportation*, 3-18-93

Changes to Automated Rate Preparation

On March 21, 1993, new requirements for preparing letter-size pieces to qualify for ZIP + 4 rates and Barcoded rates go into effect. On that date mailings at these rates must be presorted and documented according to one of the options in Chapter 5 of the *Domestic Mail Manual* (DMM) (sections 562.1, or 563 for ZIP + 4 presort rate mailings and sections 564.1, 565, or 566 for Barcoded rate mailings). In addition, beginning March 21, 1993, only pieces prepared with delivery point barcodes can qualify for letter-size Barcoded rates. Additional information concerning delivery point barcoding requirements appears in the article Delivery Point Barcoded Required to Obtain Letter-Size Barcoded Rates on page 29 in this Bulletin.

There has been some confusion about how these changes affect letter-size mail entered at nonautomation rates. These changes affect only mailings qualifying for letter-size ZIP + 4 rate or letter-size Barcoded rates. Mailers may continue, on and after March 21, 1993, to prepare mailings to qualify for Presorted First-Class rates, First-, second-, and third-class carrier route rates, second- and third-class 3/5 presort rates, second- and third-class basic presort rates, and any fourth-class rates in accordance with the current requirements for those rates in the DMM. Mail prepared for these nonautomation rates is not required to bear a barcode.

—Customer Service Support, 3-18-93

HANDBOOK EL-311 REVISION

Police Records

Handbook EL-311, *Personnel Operations*, section 311.64, is amended to incorporate new language about obtaining police records for preemployment purposes. The text now reads as follows:

311.64 Police Records. Consistent with state and local regulations, police records for all applicants selected for postal employment must be obtained from city, town, county, and state authorities where applicants have resided within the last 5 years. Local police records (e.g., city, town, or county) must be obtained during the pre-screening stage. Where fees are charged for furnishing copies of police records, use the same account number shown in 311.63 for recording the amounts paid.

In states where Postal Service access to police records for preemployment purposes is not provided, the applicant is required to obtain and provide his or her records for review. Where fees are charged, the applicant is responsible for incurring the expense.

—Employee Relations, 3-18-93

Revenue Unit, FY 1992

The value of a revenue unit for Fiscal Year (FY) 1992 is \$274.34.—*Finance and Planning*, 3-18-93

ALL IRT, WRU, CTT OFFICES

Setting Clocks for Daylight Saving Time

Correct system time in integrated retail terminals (IRTs) and weighing and rating units (WRUs) is critical because their internal clocks are used in the verification and recording of Express Mail acceptance times, service commitments, and network status. The IRT system time also appears on customer receipts and employee reports. Computerized Tracking and Tracing (CTT) scanner clocks are used in recording Express Mail arrival times.

Managers must ensure that the clocks in all IRTs, WRUs, and CTT scanners under their control are set *forward* 1 hour before opening for business on Monday, April 5, to reflect the change to daylight saving time in most locations. Facilities with Saturday night operations should reset the time as soon as possible after the 2 a.m. Sunday start time.

Use menu item 11, Set System Date and Time, from the Control Menu on the UNISYS Phase III Supervisor Disk. Set System Date and Time is item 12 on the UNISYS Phase II Supervisor Disk Control Menu. Select menu item 5, Change Fees and Tables, from the Main Menu on the MOS IRT Control Disk, then select item 5, Set Unit Date and Time, from the Change Fees and Tables Menu.

Laser Scanner

1. Press the control (CTRL) key and then the T key. The current date and time are displayed.
2. Press the clear (CLR) key and a prompt to enter a date appears. Enter the current date as MMDDYY (example: 040593).
3. Press the Enter key. The scanner then prompts the user to enter the time. Enter correct daylight saving time in military format (examples: 8 a.m. = 0800, 1:30 p.m. = 1330).
4. Press the Enter key. The scanner then returns to the first screen.
5. Press the CTRL key and then the T key to verify the time and date.
6. Press the Enter key, if correct; if not, reenter correct information.

SEE FORM ON PAGE 39

Form 8105, Money Order Transaction Report

Customers and postal clerks must complete Form 8105, *Money Order Transaction Report*, for all daily purchases with a total face value between \$3,000 and \$10,000. If the purchaser fails to provide all required identification and information, the clerk must refuse to sell the money orders. Purchases over \$10,000 are prohibited.

Materiel distribution centers do not stock Form 8105. Page 39 includes the form for local reproduction as needed. Refer to *Domestic Mail Manual* (DMM) 941 for additional information regarding this report.

—Inspection Service, 3-18-93

Contact Scanner

1. Press the function (FUNC) key and then the T key. The current date and time are displayed.
2. Press the clear (CLR) key, and a prompt to enter a date appears. Enter the current date as MMDDYY (example: 040593).
3. Press the Enter key. The scanner then prompts the user to enter the time. Enter correct daylight saving time in military format (examples: 8 a.m. = 0800, 1:30 p.m. = 1330).
4. Press the Enter key. The scanner then returns to the first screen.
5. Press the function (FUNC) key and then the T key to verify the time and dates.
6. Press the Enter key, if correct; if not, reenter correct information.

WRU Clocks

1. Select item 2, Change System Data, from the Maintenance Menu.
2. Select 1, Change System Date and Time, from the Change System Data Menu. The Set System Date and Time screen appears.
3. Press the Yes key to accept the current date. The time appears. Press the No key to clear the time.
4. Enter correct daylight saving time in military format (examples: 8 a.m. = 0800, 1:30 p.m. = 1330).
5. Press the Yes key to save the corrected time. The Change System Data Menu appears.
6. Verify the time and date and correct any errors.

Retail Consolidation Unit (RCU)

The correct time must also be entered to each RCU system. RCU operators must perform a system shutdown on Monday morning, April 5, 1993. Reboot the system and enter the correct date and time.

—Customer Service Support, 3-18-93

Special Cancellations

Postmasters with any of the special cancellation die hubs listed below may use them for the periods designated. At the end of the period, they should withdraw the die hubs from use and store them. Postmasters who do not have these special die hubs may not request them without application by the sponsors.

Cancellations	Period of Use
Kidney Foundation.....	Mar. 1-Mar. 31
Easter Seal.....	Mar. 1-Apr. 22
Red Cross.....	Mar. 1-Mar. 31
Save Your Vision	Mar. 1-Mar. 31

—Customer Service Support, 3-18-93

Guidelines for Palletizing Second- and Third-Class Mail Prepared in Trays

Effective March 21, 1993, mailers must use one of the presort options in *Domestic Mail Manual* (DMM) 560 to prepare ZIP + 4 and barcoded rate mailings. All DMM 560 options require the preparation of automation rate First-, second-, and third-class letter-size mail in trays. The DMM currently does not contain provisions for placing trays on pallets. The following guidelines provide a cost effective means for handling unitized loads of second- and third-class automation-based rate mail prepared in trays.

Mailers may begin to use these guidelines immediately. A future issue of the DMM will include guidelines pertaining to the preparation of trays on pallets.

TRAY PREPARATION. Mailers who are authorized to prepare trays presented on pallets must prepare trays in accordance with the provisions in DMM 447.3, 560, 641.43, or 646, as applicable. Trays must be labeled under 447.36, 560, or 646.225, as applicable. Rate eligibility is based on the preparation of the mail in trays, not the level of pallet, as set forth in the applicable rate eligibility and postage payment sections of the DMM.

APPLICATION. The owner of the mail, or the mailing agent in behalf of the client, may be authorized to prepare trays on pallets by submitting a letter of request to the postmaster at the post office serving the mailer's plant. The letter must identify the class and type of mail (e.g., third-class barcoded mail), estimated annual pallet usage for trayed mail, mailing schedule, and intended startup date for palletizing trays. The local postmaster will forward the letter of request to the manager, rates and classification service center (RCSC) serving that post office. The RCSC manager will authorize the preparation of mail in trays on pallets provided the mailer can comply with these preparation guidelines. The local postmaster works with the mailer and the processing and distribution center to meet the mailer's postal equipment needs.

Pallet Preparation

SEPARATION OF MAILINGS. Mailers may not place trays containing different classes of mail together on pallets. In addition, they must not combine trays from automation-based rate mailings (ZIP + 4 and Barcoded rate mailings) on pallets with trays from nonautomation based rate mailings.

MINIMUM WEIGHT AND VOLUME. The minimum mail load for a pallet containing trays is 500 pounds or 30 cubic feet of mail (standard MM trays of mail bricklaid approximately 3 feet high on a pallet). Up to 10 percent of the pallets in a mailing may contain less than 500 pounds or 30 cubic feet of mail, but not less than 250 pounds.

MAXIMUM WEIGHT AND VOLUME. The maximum mail load for a single pallet containing trays is 2,000 pounds. The height of the pallet (including the pallet and the mail) must not exceed 59 inches.

PALLET LABELS. Mailers must affix at least two clearly

visible labels on two adjacent sides of each pallet. Labels must be at least 8 by 11 inches, with letters at least 1/2 inch high. The background color of pallet labels must be pink for second-class mail and white or manila for third-class mail. Pallet labels must contain the information required in DMM 445.243 (second-class mail) or DMM 664.143 (third-class mail). ZIP + 4 or Barcoded, as appropriate, must be shown on line 2 (contents) of the pallet labels after the class and processing category when pallets contain automation-based rate mailings.

SECURING PALLET. Mailers must wrap pallets of mail with shrinkable or stretchable plastic strong enough to maintain the unity and integrity of the mail during transportation and handling. The pallets must also be banded in both directions with heavy gauge plastic or metal banding.

TOP CAPS. All pallets require top caps. Top caps must be made of an appropriate material that protects mail on pallets from damage when pallets are stacked and that helps maintain the unity of the mail during transit. A top cap must be secured to the pallet with strapping or banding sufficient to keep the cap in place. Top caps are not provided by the Postal Service.

STACKING PALLET. When loading mail on postal transportation at the mailer's plant, mailers must stack pallets, whenever possible, under the following conditions. They may, at their option, stack pallets when mail is loaded onto mailer-provided transportation for deposit at a postal facility under these conditions:

1. The combined gross weight of stacked pallets must not exceed 2,000 pounds.
2. Pallets must not be triple stacked.
3. The pallets must be banded together with appropriate strapping material to maintain the integrity of the mail during transportation and handling.
4. The heaviest pallet must be on the bottom and the lightest pallet on top.
5. The height of stacked pallets, including the mail and the pallets, must not exceed 72 inches (6 feet).

Pallet Sortation

GENERAL. Prepare pallets in the following sequence whenever there is the prescribed minimum volume of mail (either 500 pounds or 30 cubic feet) in trays to a destination:

1. **Required Five-Digit Pallets.** Place mail for the same five-digit ZIP Code area on a five-digit pallet labeled to that five-digit ZIP Code destination.
2. **Required Three-Digit Pallets.** After preparing all required five-digit pallets, place mail destined for the same three-digit ZIP Code prefix area on a three-digit pallet labeled to that three-digit destination.
3. **Required SCF Pallets.** After preparing all required five-digit and required three-digit pallets, place mail for ZIP Codes served by the same sectional center facility

Guidelines for Palletizing Second- and Third-Class Mail Prepared in Trays—Continued

(SCF) on an SCF pallet labeled to that SCF. Exhibit 122.63d includes a list of SCFs serving more than one three-digit ZIP Code area, the three-digit ZIP Code areas served by each, and the proper destination line (line 1) for pallet labels. SCF pallets must always contain trays for two or more three-digit ZIP Code areas served by the same SCF.

4. *Optional SDC Pallets (Second-Class Mail Only).* After preparing all required five-digit, three-digit, and SCF pallets, place remaining mail destined for ZIP Codes served by the same state distribution center (SDC) on an SDC pallet. Exhibit 122.63f contains a list of SDCs, the ZIP Codes they serve, and the proper destination line (line 1) for pallet labels.

5. *Optional BMC Pallets (Third-Class Mail Only).* After all required five-digit, three-digit, and SCF pallets are prepared, place remaining mail destined for ZIP Codes

served by the same bulk mail center (BMC) on a BMC pallet. Prepare mail deposited at an auxiliary service facility (ASF) and claimed at the DBMC rates according to the provisions that follow for optional ASF pallets. Use the list in Exhibit 122.63l for non-DBMC rate mail. Use the list in Exhibit 122.63s for pallets containing DBMC rate mail.

6. *Optional Auxiliary Service Facility (ASF) Pallets (Third-Class Mail Only).* For mail deposited at an ASF claimed at the destination bulk mail center. (DBMC) rate only, after preparing all required five-digit, three-digit, and SCF pallets, and any optional BMC pallets, place remaining mail destined for ZIP Codes served by the same ASF, as defined in Exhibit 122.63s, on an ASF pallet. On line 1 (destination line) of the pallet label, show the letters ASF followed by the ASF name, two-letter state abbreviation, and code of the destination ASF as shown in Exhibit 122.63s.—*Customer Service Support, 3-18-93*

Stamps Recalled From Philatelic Fulfillment

As of June 19, 1993, the Philatelic Fulfillment Service Center will no longer sell the following postage stamps, stationery, and philatelic products. They are, however, subject to future sale at post offices as part of other stamp products.

Item No.	Description
1043	23-cent Mary Cassatt (1988, printing) stamp.
1107	\$1 USPS/Olympic Logo stamp.
2144	52-cent Consular Service envelope.
4424	29-cent Summer Olympics stamp.
4425	29-cent First Voyage of Columbus stamp.
4427	29-cent Space (U.S.-Russia joint issue) stamp.
4427F	47-cent Space, Russian version stamp.
4491	29-cent World Columbian Expo '92 stamp.
5534	29-cent Denominated Flower stamp L and Bullseye perforation.
6601	Flag/Olympic Rings booklet pane.
6638	\$2.90 Flag/Olympic Rings booklet (N&R).
6627	\$5.80 1991 Love booklet.
6665	\$2.90 1991 Love booklet panes.
7700	100-17.5-cent Racing Car coil.
7725	500-25-cent Flag/Yosemite coil.
7727	10,000-25-cent Flag/Yosemite coil.
7737	100-25-cent Flag/Yosemite coil.
7798	500-11-cent Stutz Bearcat coil.
7799	3,000-11-cent Stutz Bearcat coil.
7912A	3,000-11-cent Caboose precancel coil.
7920A	500-23-cent Flag presort coil.
7921A	3,000-23-cent Flag presort coil.
8826	\$10 Lou Gehrig poster.

Withdraw immediately from sale all of the above items from philatelic outlets, Stores of the Future, and all sale points. Handle them according to Handbook F-1, *Post Office Accounting Procedures*, section 450, Disposition of Nonsalable Stock, with the exception of the following items. Place them on sale at the regular windows until exhausted:

Item No.	Description
1043	23-cent Mary Cassatt stamp.
1107	\$1 USPS/Olympic Logo stamp.
5534	29-cent Denominated Flower, all perforations.
6638	\$2.90 Flag/Olympic Rings booklets.
6627	\$5.80 1991 Love Stamp booklet.
7798, 7799	11-cent Stutz Bearcat coils.
7725, 7727, 7737	25-cent Flag/Yosemite coils.
7912A	11-cent Caboose precancel coil.
7920A, 7921A	23-cent Flag presort coils.

The following stamp was withdrawn from sale on December 31, 1992.

Item No.	Description
4423	29-cent Olympic Baseball Stamp.

Offices must withdraw the listed stamp items immediately from all selling points and handle them according to Handbook F-1, section 450.

The Inspection Service, when conducting various audits and reviews, will verify these items have been removed from sale.—*Customer Service Support, 3-18-93*

STAMP ANNOUNCEMENT 93-5

Cherokee Strip Commemorative Stamp



Copyright U.S. Postal Service 1992

The Postal Service commemorates the centennial of the Cherokee Strip land run with the issuance of a 29-cent stamp on April 17 in Enid, Oklahoma. The stamp, designed by artist Harold T. Holden of Kremlin, Oklahoma, features land run contestants on horseback and in a covered wagon racing to stake a claim. Cherokee Strip Land Run 1893 appears in the upper right and 29 USA appears in the upper left corner of the design.

The Cherokee Strip was an 8-million acre parcel of land in the northwest quadrant of Oklahoma. When the federal government moved members of the Cherokee tribe from the southeastern United States to Indian Territory (eastern Oklahoma) in the late 1830s, they received an outlet to the western hunting grounds that became known as the Cherokee Strip.

On September 16, 1893, by presidential order, the Cherokee Strip was opened for settlement in a great land run. Over 100,000 people entered the race—undoubtedly one of the largest, most spectacular competitive events in history.

FORMAT:
Sheet of 20

ISSUE DATE:
April 17, 1993

CITY:
Enid, OK

DESIGNER:
Harold T. Holden, Kremlin, OK

ENGRAVER:
Dick Jones (lettering)

ART DIRECTOR:
William Halstead, Stamp Design, USPS

TYPOGRAPHER:
John Boyd

PROJECT MANAGER:
Joe Brockert, Stamp Design, USPS

MODELER:
Jack Barnett

MANUFACTURING PROCESS:
Offset/Intaglio, American Bank Note Co.,
Los Angeles, CA

COLORS:
(Offset) Yellow, magenta, cyan, and black; (intaglio)
black, PMS 492

SIZE:
0.84 x 1.41 in/21.3 x 35.8 mm (image area)
0.99 x 1.56 in/25.1 x 39.6 mm (overall)
5.94 x 7.80 in/150.6 x 198.0 mm (full pane)

PLATE NUMBERS:
A1 (Intaglio), 4 (Offset)

MARGINAL MARKINGS:
©U.S. Postal Service 1992
Use Correct ZIP Code®

How to Order First Day of Issue Postmark

Customers have 30 days to obtain the first day of issue postmark by mail. The easiest way is to purchase the new stamps at the local post office, affix the stamps to envelopes of choice, address the envelopes (to one's self or others), insert a card of postcard thickness, tuck in the flap, and place the envelopes in a larger envelope addressed to:

CUSTOMER AFFIXED ENVELOPES
CHEROKEE STRIP STAMP
POSTMASTER
ENID OK 73701-9991.

After applying the first day of issue postmark, the Postal Service returns the envelopes through the mail. There is no charge for the postmark. All orders must be postmarked by May 17.

Customers who wish the Postal Service to affix stamps (to a maximum of 50 envelopes) should send self-addressed envelopes and 29 cents per stamp, in check or money order, to:

CHEROKEE STRIP STAMP
POSTMASTER
ENID OK 73701-9992.

—Marketing and Sales, 3-18-93

CONDITIONS APPLIED TO MAIL ADDRESSED TO MILITARY POST OFFICES OVERSEAS

Mail addressed to, from, or between military post offices overseas is subject to certain conditions or restrictions of mailing regarding content, preparation, and handling. The table below outlines these conditions by APO/FPO (army post office/fleet post office) ZIP Code through the use of footnoted mailing restriction codes, which appear on the last page of the table.

Acceptance clerks: Use this table in conjunction with the integrated retail terminal (IRT) to determine

whether an APO/FPO ZIP Code is active and what conditions of mailing apply. For Express Mail Military Service availability, refer to Handbook PO-514, *Express Mail Military Service*, and the local EMMS directory.

The entire table appears in the second regularly scheduled *Postal Bulletin* of each month. Changes occurring between issues, as well as those that take effect with the monthly issuance, are highlighted in bold print.

APO/ FPO	See Restrictions	APO/ FPO	See Restrictions	APO/ FPO	See Restrictions	APO/ FPO	See Restrictions
09001	Not Active	09050	Not Active	09099	B-C-D-U	09148	Not Active
09002	Not Active	09051	Not Active	09100	B-C-D-U	09149	Not Active
09003	Not Active	09052	B-C-D-U	09101	Not Active	09150	Not Active
09004	Not Active	09053	B-C-D-U	09102	B-C-D-U	09151	Not Active
09005	Not Active	09054	B-C-D-U	09103	B-C-D-U	09152	Not Active
09006	Not Active	09055	Not Active	09104	B-C-D-U	09153	Not Active
09007	B-C-D-U	09056	B-C-D-U	09105	B-C-D-U	09154	B-C-D-U
09008	B-C-D-U	09057	B-C-D-U	09106	B-C-D-U	09155	Not Active
09009	B-C-D-U	09058	B-C-D-U	09107	B-C-D-U	09156	B-C-D
09010	Not Active	09059	B-C-D-U	09108	Not Active	09157	B-C-D-U
09011	Not Active	09060	B-C-D-U	09109	B-C-D-U	09158	Not Active
09012	B-C-D-U	09061	Not Active	09110	B-C-D-U	09159	Not Active
09013	Not Active	09062	Not Active	09111	B-C-D-U	09160	Not Active
09014	B-C-D-U	09063	B-C-D-L-U	09112	B-C-D-U	09161	Not Active
09015	Not Active	09064	B-C-D	09113	Not Active	09162	Not Active
09016	Not Active	09065	B-C-D-U	09114	B-C-D-U	09163	Not Active
09017	Not Active	09066	B-C-D-U	09115	Not Active	09164	B-C-D-U
09018	Not Active	09067	B-C-D-U	09116	Not Active	09165	B-C-D-U
09019	Not Active	09068	B-C-D-U	09117	Not Active	09166	B-C-D-U
09020	Not Active	09069	B-C-D-U	09118	Not Active	09167	Not Active
09021	B-C-D-U	09070	Not Active	09119	Not Active	09168	Not Active
09022	Not Active	09071	Not Active	09120	Not Active	09169	B-C-D-U
09023	Not Active	09072	B-C-D-U	09121	Not Active	09170	Not Active
09024	Not Active	09073	Not Active	09122	B-C-D	09171	Not Active
09025	B-C-D-U	09074	B-C-D-U	09123	B-C-D-U	09172	B-C-D-U
09026	B-C-D-U	09075	Not Active	09124	Not Active	09173	B-C-D-U
09027	Not Active	09076	B-C-D-U	09125	Not Active	09174	Not Active
09028	B-C-D-U	09077	Not Active	09126	B-C-D	09175	B-C-D-U
09029	B-C-D-U	09078	Not Active	09127	Not Active	09176	Not Active
09030	Not Active	09079	B-C-D-U	09128	B-C-D-U	09177	B-C-D-U
09031	B-C-D-U	09080	B-C-D-U	09129	Not Active	09178	B-C-D-U
09032	Not Active	09081	B-C-D-U	09130	B-C-D-U	09179	Not Active
09033	B-C-D-U	09082	B-C-D-U	09131	B-C-D-U	09180	B-C-D-U
09034	B-C-D-U	09083	Not Active	09132	B-C-D-U	09181	Not Active
09035	Not Active	09084	Not Active	09133	Not Active	09182	B-C-D-U
09036	B-C-D-U	09085	Not Active	09134	Not Active	09183	B-C-D-U
09037	B-C-D-U	09086	B-C-D-U	09135	Not Active	09184	Not Active
09038	Not Active	09087	Not Active	09136	B-C-D	09185	B-C-D-U
09039	B-C-D-U	09088	Not Active	09137	Not Active	09186	B-C-D-U
09040	Not Active	09089	B-C-D-U	09138	B-C-D-U	09187	B-C-D-U
09041	Not Active	09090	B-C-D-U	09139	B-C-D	09188	Not Active
09042	B-C-D-U	09091	B-C-D-U	09140	B-C-D-U	09189	B-C-D-U
09043	Not Active	09092	Not Active	09141	B-C-D-U	09190	Not Active
09044	Not Active	09093	Not Active	09142	Not Active	09191	Not Active
09045	B-C-D-U	09094	B-C-D	09143	B-C-D-U	09192	B-C-D-U
09046	B-C-D-U	09095	B-C-D-U	09144	Not Active	09193	Not Active
09047	B-C-D-U	09096	B-C-D-U	09145	Not Active	09194	Not Active
09048	Not Active	09097	B-C-D	09146	B-C-D-U	09195	Not Active
09049	Not Active	09098	B-C-D-U	09147	Not Active	09196	B-C-D

CONDITIONS APPLIED TO MAIL ADDRESSED TO MILITARY POST OFFICES OVERSEAS—Continued

APO/ FPO	See Restrictions	APO/ FPO	See Restrictions	APO/ FPO	See Restrictions	APO/ FPO	See Restrictions
09197	Not Active	09262	B-C-D-U	09327	Not Active	09391	Not Active
09198	Not Active	09263	B-C-D-U	09328	Not Active	09392	Not Active
09199	Not Active	09264	B-C-D-U	09329	Not Active	09393	Not Active
09201	Not Active	09265	Not Active	09330	Not Active	09394	Not Active
09202	Not Active	09266	B-C-D-U	09331	Not Active	09395	Not Active
09203	Not Active	09267	B-C-D-U	09332	Not Active	09396	A-B1-F
09204	Not Active	09268	Not Active	09333	Not Active	09397	Not Active
09205	Not Active	09269	B-C-D-U	09334	Not Active	09398	Not Active
09206	Not Active	09270	Not Active	09335	Not Active	09399	Not Active
09207	B-C-D	09271	Not Active	09336	Not Active	09401	Not Active
09208	Not Active	09272	Not Active	09337	Not Active	09402	Not Active
09209	Not Active	09273	Not Active	09338	Not Active	09403	Not Active
09210	Not Active	09274	Not Active	09339	Not Active	09404	Not Active
09211	B-C-D-U	09275	B-C-D-U	09340	Not Active	09405	B-C-C1-U3
09212	B-C-D-U	09276	Not Active	09341	Not Active	09406	Not Active
09213	B-C-D-U	09277	Not Active	09342	Not Active	09407	Not Active
09214	B-C-D-U	09278	Not Active	09343	Not Active	09408	Not Active
09215	B-C-D-U	09279	B-C-D-U	09344	Not Active	09409	Not Active
09216	Not Active	09280	Not Active	09345	Not Active	09410	B-C-C1-U3
09217	Not Active	09281	Not Active	09346	Not Active	09411	Not Active
09218	Not Active	09282	Not Active	09347	Not Active	09412	Not Active
09219	Not Active	09283	Not Active	09348	Not Active	09413	Not Active
09220	B-C-D-U	09284	Not Active	09349	Not Active	09414	Not Active
09221	Not Active	09285	Not Active	09350	Not Active	09415	Not Active
09222	B-C-D-U	09286	Not Active	09351	Not Active	09416	Not Active
09223	Not Active	09287	Not Active	09352	Not Active	09417	Not Active
09224	Not Active	09288	Not Active	09353	Not Active	09418	Not Active
09225	B-C-D-U	09289	Not Active	09354	Not Active	09419	B-C-C1-U3
09226	B-C-D-U	09290	Not Active	09355	Not Active	09420	B-C-C1-U3
09227	B-C-D-U	09291	Not Active	09356	Not Active	09421	B-C-C1
09228	B-C-D-U	09292	Not Active	09357	Not Active	09422	B-C-C1-U3
09229	B-C-D-U	09293	Not Active	09358	Not Active	09423	Not Active
09230	Not Active	09294	Not Active	09359	Not Active	09424	Not Active
09231	Not Active	09295	Not Active	09360	Not Active	09425	Not Active
09232	Not Active	09296	Not Active	09361	Not Active	09426	Not Active
09233	Not Active	09297	Not Active	09362	Not Active	09427	Not Active
09234	B-C-D-U	09298	Not Active	09363	Not Active	09428	Not Active
09235	B-C-D-U	09299	Not Active	09364	Not Active	09429	Not Active
09236	Not Active	09301	Not Active	09365	Not Active	09430	Not Active
09237	B-C-D-U	09302	Not Active	09366	Not Active	09431	Not Active
09238	Not Active	09303	Not Active	09367	Not Active	09432	Not Active
09239	B-C-D-U	09304	Not Active	09368	Not Active	09433	B-C-C1-U3
09240	Not Active	09305	Not Active	09369	Not Active	09434	Not Active
09241	Not Active	09306	Not Active	09370	Not Active	09435	Not Active
09242	B-C-D-U	09307	Not Active	09371	Not Active	09436	Not Active
09243	Not Active	09308	Not Active	09372	Not Active	09437	Not Active
09244	B-C-D-U	09309	Not Active	09373	Not Active	09438	Not Active
09245	B-C-D-U	09310	Not Active	09374	Not Active	09439	Not Active
09246	Not Active	09311	Not Active	09375	Not Active	09440	Not Active
09247	Not Active	09312	Not Active	09376	Not Active	09441	Not Active
09248	B-C-D-U	09313	Not Active	09377	Not Active	09442	Not Active
09249	Not Active	09314	Not Active	09378	Not Active	09443	Not Active
09250	B-C-D-U	09315	Not Active	09379	Not Active	09444	Not Active
09251	Not Active	09316	Not Active	09380	Not Active	09445	Not Active
09252	B-C-D-U	09317	Not Active	09381	Not Active	09446	Not Active
09253	Not Active	09318	Not Active	09382	Not Active	09447	B-C-C1-U3
09254	Not Active	09319	Not Active	09383	Not Active	09448	B-C-C1-U3
09255	Not Active	09320	Not Active	09384	Not Active	09449	B-C-C1-U3
09256	Not Active	09321	Not Active	09385	Not Active	09450	Not Active
09257	Not Active	09322	Not Active	09386	Not Active	09451	Not Active
09258	Not Active	09323	Not Active	09387	Not Active	09452	Not Active
09259	Not Active	09324	Not Active	09388	Not Active	09453	Not Active
09260	B-C-D-U	09325	Not Active	09389	Not Active	09454	Not Active
09261	Not Active	09326	Not Active	09390	Not Active	09455	Not Active

CONDITIONS APPLIED TO MAIL ADDRESSED TO MILITARY POST OFFICES OVERSEAS—Continued

APO/ FPO	See Restrictions	APO/ FPO	See Restrictions	APO/ FPO	See Restrictions	APO/ FPO	See Restrictions
09456	B-C-C1-U3	09521	Not Active	09585	Not Active	09650	Not Active
09457	Not Active	09522	Not Active	09586	NONE	09651	Not Active
09458	Not Active	09523	Not Active	09587	NONE	09652	Not Active
09459	B-C-C1-U3	09524	Not Active	09588	NONE	09653	Not Active
09460	B-C-C1-U3	09525	Not Active	09589	Not Active	09654	Not Active
09461	B-C-C1-U3	09526	Not Active	09590	NONE	09655	Not Active
09462	Not Active	09527	Not Active	09591	NONE	09656	Not Active
09463	B-C-C1-U3	09528	Not Active	09592	Not Active	09657	Not Active
09464	B-C-C1-U3	09529	NONE	09593	NONE	09658	Not Active
09465	B-C-C1-U3	09530	Not Active	09594	NONE	09659	Not Active
09466	B-C-C1-U3	09531	NONE	09595	NONE	09660	Not Active
09467	B-C-C1-U3	09532	NONE	09596	NONE	09661	Not Active
09468	B-C-C1-U3	09533	Not Active	09597	Not Active	09662	Not Active
09469	B-C-C1-U3	09534	Not Active	09598	Not Active	09663	Not Active
09470	B-C-C1-U3	09535	Not Active	09599	NONE	09664	Not Active
09471	B-C-C1-U3	09536	NONE	09601	B-C-F-F1-U	09665	Not Active
09472	B-C-C1-U3	09537	Not Active	09602	Replaced by 09826	09666	Not Active
09473	Not Active	09538	NONE	09603	Not Active	09667	Not Active
09474	Not Active	09539	Not Active	09604	Not Active	09668	Not Active
09475	Not Active	09540	Not Active	09605	B-C-F-U	09669	Not Active
09476	Not Active	09541	Not Active	09606	Not Active	09670	B-C-F-U
09477	Not Active	09542	Not Active	09607	Not Active	09671	Not Active
09478	Not Active	09543	NONE	09608	Not Active	09672	Not Active
09479	Not Active	09544	NONE	09609	B-C-F-U	09673	Not Active
09480	Not Active	09545	NONE	09610	B-C-F-U	09674	Not Active
09481	Not Active	09546	Not Active	09611	Not Active	09675	Not Active
09482	Not Active	09547	NONE	09612	B-C-F-U	09676	Not Active
09483	Not Active	09548	Not Active	09613	B-C-F-U	09677	Not Active
09484	Not Active	09549	NONE	09614	Not Active	09678	Not Active
09485	Not Active	09550	NONE	09615	Not Active	09679	Not Active
09486	Not Active	09551	NONE	09616	Not Active	09680	Not Active
09487	Not Active	09552	Not Active	09617	Not Active	09681	Not Active
09488	Not Active	09553	Not Active	09618	B-C-F-U	09682	Not Active
09489	Not Active	09554	Not Active	09619	B-C-F-U	09683	Not Active
09490	Not Active	09555	Not Active	09620	B-C-F-U	09684	Not Active
09491	Not Active	09556	NONE	09621	B-C-F-U	09685	Not Active
09492	Not Active	09557	NONE	09622	B-C-F-U	09686	Not Active
09493	Not Active	09558	NONE	09623	Not Active	09687	Not Active
09494	B-C-C1-U3	09559	NONE	09624	B-C-F-U	09688	Not Active
09495	B-C-C1-U3	09560	Not Active	09625	B-C-F-U	09689	Not Active
09496	B-C-C1-U3	09561	NONE	09626	B-C-F-U	09690	Not Active
09497	B-C-C1-U3	09562	NONE	09627	B-C-F-U	09691	Not Active
09498	B-C-C1	09563	NONE	09628	B-C-F-F1-U	09692	Not Active
09499	B-C-C1-U3	09564	NONE	09629	Not Active	09693	Not Active
09501	NONE	09565	NONE	09630	B-C-F-U	09694	Not Active
09502	NONE	09566	NONE	09631	Not Active	09695	Not Active
09503	NONE	09567	NONE	09632	Not Active	09696	Not Active
09504	NONE	09568	NONE	09633	Not Active	09697	Not Active
09505	O	09569	NONE	09634	Not Active	09698	Not Active
09506	NONE	09570	NONE	09635	Not Active	09699	Not Active
09507	NONE	09571	Not Active	09636	Not Active	09701	Not Active
09508	NONE	09572	Not Active	09637	Not Active	09702	Not Active
09509	Not Active	09573	NONE	09638	Not Active	09703	B1-C-F1
09510	Not Active	09574	NONE	09639	Not Active	09704	B-C-D
09511	Not Active	09575	NONE	09640	Not Active	09705	B1
09512	NONE	09576	NONE	09641	B-U	09706	B-C-D-U
09513	NONE	09577	NONE	09642	B-U	09707	B-C-D-U
09514	Not Active	09578	NONE	09643	B	09708	B1
09515	Not Active	09579	NONE	09644	U	09709	Not Active
09516	Not Active	09580	NONE	09645	U	09710	Not Active
09517	NONE	09581	NONE	09646	Not Active	09711	Not Active
09518	Not Active	09582	NONE	09647	B-U	09712	Not Active
09519	Not Active	09583	Not Active	09648	B-U	09713	B1-C-F1
09520	Not Active	09584	Not Active	09649	Not Active	09714	B

CONDITIONS APPLIED TO MAIL ADDRESSED TO MILITARY POST OFFICES OVERSEAS—Continued

APO/ FPO	See Restrictions	APO/ FPO	See Restrictions	APO/ FPO	See Restrictions	APO/ FPO	See Restrictions
09715	B-F1	09779	A-B1-C-C1-D-F-R	09844	Not Active	09909	Not Active
09716	B-C-D-N-U	09780	A-B1-C-C1-D-F-G-N-R	09845	Not Active	09910	Not Active
09717	Not Active	09781	A-B1-C-C1-D-F-G-N-R	09846	A-B1	09911	Not Active
09718	B-F-I-N-U	09782	A-B1-C-C1-D-F-G-N-R	09847	Not Active	09912	Not Active
09719	B1-F1	09783	A-B1-C-C1-D-F-G-N-R	09848	B-E2-F-H1-R-U1	09913	Not Active
09720	B-U	09784	A-B1-C-C1-D-F-G-N-R	09849	Not Active	09914	Not Active
09721	B-N-U	09785	A-B1-C-C1-D-F-G-N-R	09850	Not Active	09915	Not Active
09722	B-C-D-N-U	09786	A-B1-C-C1-D-F-G-N-R	09851	Not Active	09916	Not Active
09723	B-N-U	09787	A-B1-C-C1-D-F-G-N-R	09852	B-E2-F-H1-R-U1	09917	Not Active
09724	B	09788	A-B1-C-C1-D-F-G-N-R	09853	B-E2-F-H1-R-U1	09918	Not Active
09725	C	09789	A-B1-C-C1-D-F-G-N-R	09854	Not Active	09919	Not Active
09726	B-N-U	09790	A-B1-C-C1-D-F-G-N-R	09855	B-E2-F-H1-R-U1	09920	Not Active
09727	NONE	09791	Not Active	09856	Not Active	09921	Not Active
09728	C	09792	Not Active	09857	NONE	09922	Not Active
09729	C	09793	Not Active	09858	B-E2-F-H1-R-U1	09923	Not Active
09730	NONE	09794	Not Active	09859	NONE	09924	Not Active
09731	N	09795	Not Active	09860	Not Active	09925	Not Active
09732	NONE	09796	Not Active	09861	NONE	09926	Not Active
09733	B1-I-N	09797	Not Active	09862	Not Active	09927	Not Active
09734	Not Active	09798	Not Active	09863	NONE	09928	Not Active
09735	Not Active	09799	Not Active	09864	NONE	09929	Not Active
09736	Not Active	09801	Not Active	09865	A-B1	09930	Not Active
09737	Not Active	09802	B-E2-F-H1-R-U1	09866	B-E2-F-H1-R-U1	09931	Not Active
09738	Not Active	09803	B-E2-F-H1-R-U1	09867	A-B1-U	09932	Not Active
09739	Not Active	09804	B-E2-F-H1-R-U1	09868	X	09933	Not Active
09740	Not Active	09805	B-E2-F-H1-R-U1	09869	X	09934	Not Active
09741	Not Active	09806	Not Active	09870	Not Active	09935	Not Active
09742	Not Active	09807	Not Active	09871	B-E2-F-H1-R-U1	09936	Not Active
09743	Not Active	09808	B-E2-F-H1-R-U1	09872	Not Active	09937	Not Active
09744	Not Active	09809	B-E2-F-H1-R-U1	09873	NONE	09938	Not Active
09745	Not Active	09810	B-E2-F-H1-R-U1	09874	X	09939	Not Active
09746	Not Active	09811	B-E2-F-H1-R-U1	09875	Not Active	09940	Not Active
09747	Not Active	09812	B-E2-E3-F-F1-I-N-R-U	09876	X	09941	Not Active
09748	Not Active	09813	Service Suspended	09877	Not Active	09942	Not Active
09749	Not Active	09814	B-E2-E3-F-F1-I-N-R-U	09878	X	09943	Not Active
09750	Not Active	09815	N	09879	Not Active	09944	Not Active
09751	Not Active	09816	A-B1-F	09880	B-E2-F-H1-R-U1	09945	Not Active
09752	Not Active	09817	Not Active	09881	NONE	09946	Not Active
09753	Not Active	09818	Not Active	09882	Not Active	09947	Not Active
09754	Not Active	09819	A-B1-F-P	09883	Not Active	09948	Not Active
09755	Not Active	09820	Not Active	09884	Not Active	09949	Not Active
09756	Not Active	09821	A-B1-F	09885	Not Active	09950	Not Active
09757	Not Active	09822	A-B1-F	09886	Not Active	09951	Not Active
09758	Not Active	09823	A-B1-F	09887	Not Active	09952	Not Active
09759	Not Active	09824	A-B1-F	09888	Not Active	09953	Not Active
09760	Not Active	09825	A-B1-F	09889	B-E2-F-H1-R-U1	09954	Not Active
09761	Not Active	09826	B-E2-F-H1-R-U1	09890	Not Active	09955	Not Active
09762	Not Active	09827	A-B1-F	09891	B-E2-F-H1-R-U1	09956	Not Active
09763	Not Active	09828	Service Suspended	09892	A-B-F	09957	Not Active
09764	Not Active	09829	N	09893	Not Active	09958	Not Active
09765	Not Active	09830	B-C	09894	B-E2-F-H1-R-U1	09959	Not Active
09766	Not Active	09831	F-N	09895	Not Active	09960	Not Active
09767	Not Active	09832	B1-U1	09896	NONE	09961	Not Active
09768	Not Active	09833	B1-U1	09897	NONE	09962	Not Active
09769	Not Active	09834	NONE	09898	NONE	09963	Not Active
09770	Not Active	09835	A-B1	09899	F	09964	Not Active
09771	Not Active	09836	A-B-C-F-M	09901	Not Active	09965	Not Active
09772	Not Active	09837	Not Active	09902	Not Active	09966	Not Active
09773	Not Active	09838	Not Active	09903	Not Active	09967	Not Active
09774	Not Active	09839	A-B1-U	09904	Not Active	09968	Not Active
09775	Not Active	09840	Not Active	09905	Not Active	09969	Not Active
09776	Not Active	09841	A-B1	09906	Not Active	09970	Not Active
09777	A-B-C-E	09842	A-B1	09907	Not Active	09971	Not Active
09778	Not Active	09843	A-B1	09908	Not Active	09972	Not Active

CONDITIONS APPLIED TO MAIL ADDRESSED TO MILITARY POST OFFICES OVERSEAS—Continued

APO/ FPO	See Restrictions	APO/ FPO	See Restrictions	APO/ FPO	See Restrictions	APO/ FPO	See Restrictions
09973	Not Active	34037	B-C-F-H-M-N	96202	A-B	96266	A-B-U
09974	Not Active	34038	B-I-M-N	96203	A-B	96267	A-B-U
09975	Not Active	34039	N	96204	A-B	96268	Not Active
09976	Not Active	34040	NONE	96205	A-B-U	96269	A-B-U
09977	Not Active	34041	B-M-N-U2	96206	A-B-U	96270	Not Active
09978	Not Active	34042	B-D-F-M	96207	A-B	96271	A-B-U
09979	Not Active	34043	Not Active	96208	A-B-U	96272	Not Active
09980	Not Active	34044	Not Active	96209	Not Active	96273	Not Active
09981	Not Active	34045	Not Active	96210	Not Active	96274	Not Active
09982	Not Active	34046	Not Active	96211	Not Active	96275	A-B-U
09983	Not Active	34047	B-D-F-M	96212	A-B-U	96276	A-B
09984	Not Active	34048	B	96213	Not Active	96277	Not Active
09985	Not Active	34049	Not Active	96214	A-B-U	96278	A-B-U
09986	Not Active	34050	NONE	96215	A-B-U	96279	Not Active
09987	Not Active	34051	NONE	96216	A-B-U	96280	Not Active
09988	Not Active	34052	Not Active	96217	A-B-U	96281	Not Active
09989	Not Active	34053	NONE	96218	A-B-U	96282	Not Active
09990	Not Active	34054	NONE	96219	A-B-U	96283	A-B-U
09991	Not Active	34055	N	96220	A-B-U	96284	A-B-U
09992	Not Active	34056	Not Active	96221	A-B-U	96285	Not Active
09993	Not Active	34057	Not Active	96222	A-B-U	96286	Not Active
09994	Not Active	34058	B	96223	Not Active	96287	Not Active
09995	Not Active	34059	B	96224	A-B-U	96288	Not Active
09996	Not Active	34060	B	96225	Not Active	96289	Not Active
09997	Not Active	34061	B-U	96226	Not Active	96290	Not Active
09998	Not Active	34062	Not Active	96227	Not Active	96291	Not Active
09998	Not Active	34063	Not Active	96228	Not Active	96292	Not Active
09999	Not Active	34064	Not Active	96229	A-B-U	96293	Not Active
34001	B-U	34065	Not Active	96230	Not Active	96294	Not Active
34002	B-U	34066	Not Active	96231	Not Active	96295	Not Active
34003	B-U	34067	Not Active	96232	Not Active	96296	Not Active
34004	B-U	34068	Not Active	96233	Not Active	96297	A-B-U
34005	B-U	34069	Not Active	96234	Not Active	96298	Not Active
34006	B	34070	Not Active	96235	Not Active	96299	Not Active
34007	B-U	34071	Not Active	96236	Not Active	96301	Not Active
34008	Not Active	34072	Not Active	96237	Not Active	96302	Not Active
34009	B	34073	Not Active	96238	Not Active	96303	Not Active
34010	Not Active	34074	Not Active	96239	Not Active	96304	Not Active
34011	B	34075	Not Active	96240	Not Active	96305	Not Active
34012	Not Active	34076	Not Active	96241	Not Active	96306	B-M-W
34013	Not Active	34077	Not Active	96242	Not Active	96307	Not Active
34014	Not Active	34078	NONE	96243	Not Active	96308	Not Active
34015	Not Active	34079	Not Active	96244	Not Active	96309	Not Active
34016	Not Active	34080	NONE	96245	Not Active	96310	B-M-W
34017	Not Active	34081	Not Active	96246	Not Active	96311	Not Active
34018	Not Active	34082	Not Active	96247	Not Active	96312	Not Active
34019	Not Active	34083	NONE	96248	Not Active	96313	B-M-W
34020	B-M-N	34084	NONE	96249	Not Active	96314	B-M-W
34021	M-N	34085	Not Active	96250	Not Active	96315	Not Active
34022	B-D-F-M	34086	NONE	96251	A-B-U	96316	Not Active
34023	B-M-N	34087	NONE	96252	Not Active	96317	Not Active
34024	B-M-N	34088	Not Active	96253	Not Active	96318	Not Active
34025	Not Active	34089	Not Active	96254	Not Active	96319	B-M-W
34026	Not Active	34090	NONE	96255	Not Active	96320	Not Active
34027	Not Active	34091	NONE	96256	Not Active	96321	B-M-W
34028	Not Active	34092	NONE	96257	A-B-U	96322	B-M-W
34029	Not Active	34093	NONE	96258	A-B-U	96323	B-M-W
34030	B-I-M	34094	Not Active	96259	A-B-U	96324	Not Active
34031	B-M	34095	Not Active	96260	A-B-U	96325	B-M-W
34032	M-N	34096	Not Active	96261	Not Active	96326	B-M-W
34033	B-C-F-M-N	34097	Not Active	96262	Not Active	96327	Not Active
34034	B1-M-N	34098	NONE	96263	Not Active	96328	B-M-W
34035	B1-H-M-N	34099	NONE	96264	A-B-U	96329	Not Active
34036	M-N	96201	A-B	96265	Not Active	96330	B-M-W

CONDITIONS APPLIED TO MAIL ADDRESSED TO MILITARY POST OFFICES OVERSEAS—Continued

APO/ FPO	See Restrictions	APO/ FPO	See Restrictions	APO/ FPO	See Restrictions	APO/ FPO	See Restrictions
96331	Not Active	96395	Not Active	96460	Not Active	96525	Not Active
96332	Not Active	96396	Not Active	96461	Not Active	96526	Not Active
96333	Not Active	96397	Not Active	96462	Not Active	96527	Not Active
96334	Not Active	96398	Not Active	96463	Not Active	96528	Not Active
96335	Not Active	96399	Not Active	96464	NONE	96529	Not Active
96336	B-M-W	96401	Not Active	96465	Not Active	96530	Not Active
96337	B-M-W	96402	Not Active	96466	Not Active	96531	B-H-M
96338	B-M-W	96403	Not Active	96467	Not Active	96532	Not Active
96339	Not Active	96404	Not Active	96468	Not Active	96533	Not Active
96340	Not Active	96405	Not Active	96469	Not Active	96534	A-F
96341	Not Active	96406	Not Active	96470	Not Active	96535	A-B-F
96342	Not Active	96407	Not Active	96471	Not Active	96536	B3
96343	B-M-W	96408	Not Active	96472	Not Active	96537	B3
96344	Not Active	96409	Not Active	96473	Not Active	96538	B3
96345	Not Active	96410	Not Active	96474	Not Active	96539	B3
96346	Not Active	96411	Not Active	96475	Not Active	96540	B3
96347	B-M-W	96412	Not Active	96476	Not Active	96541	B3
96348	B-M-W	96413	Not Active	96477	Not Active	96542	B3
96349	B-M-W	96414	Not Active	96478	Not Active	96543	B3-P
96350	B-M-W	96415	Not Active	96479	Not Active	96544	B3
96351	Not Active	96416	Not Active	96480	Not Active	96545	Not Active
96352	Not Active	96417	Not Active	96481	Not Active	96546	F-U
96353	Not Active	96418	Not Active	96482	Not Active	96547	F-U
96354	Not Active	96419	Not Active	96483	Not Active	96548	A-B-H-M-U
96355	Not Active	96420	Not Active	96484	Not Active	96549	A-B-H-M-U
96356	Not Active	96421	Not Active	96485	Not Active	96550	A-B-H-H1
96357	Not Active	96422	Not Active	96486	Not Active	96551	A-B-H-M-U
96358	Not Active	96423	Not Active	96487	Not Active	96552	A-B-H-M-U
96359	Not Active	96424	Not Active	96488	Not Active	96553	A-B-H-I-M-N-U
96360	Not Active	96425	Not Active	96489	Not Active	96554	A-B-H-M-U
96361	Not Active	96426	Not Active	96490	Not Active	96555	B-F-M
96362	B-M-W	96427	Not Active	96491	Not Active	96556	NONE
96363	Not Active	96428	Not Active	96492	Not Active	96557	B-F-M
96364	B-L-M-W	96429	Not Active	96493	Not Active	96558	NONE
96365	B-M-W	96430	Not Active	96494	Not Active	96559	Not Active
96366	Not Active	96431	Not Active	96495	Not Active	96560	Not Active
96367	B-L-M-W	96432	Not Active	96496	Not Active	96561	Not Active
96368	B-M-W	96433	Not Active	96497	Not Active	96562	Not Active
96369	Not Active	96434	Not Active	96498	Not Active	96563	Not Active
96370	B-M-W	96435	Not Active	96499	Not Active	96564	Not Active
96371	Not Active	96436	Not Active	96501	Not Active	96565	Not Active
96372	B-M-W	96437	Not Active	96502	Not Active	96566	Not Active
96373	B-M-W	96438	Not Active	96503	Not Active	96567	Not Active
96374	B-M-W	96439	Not Active	96504	Not Active	96568	Not Active
96375	B-M-W	96440	B-F-K	96505	NONE	96569	Not Active
96376	B-M-W	96441	Not Active	96506	NONE	96570	Not Active
96377	B-M-W	96442	Not Active	96507	NONE	96571	Not Active
96378	B-M-W	96443	Not Active	96508	NONE	96572	Not Active
96379	B-M-W	96444	Not Active	96509	NONE	96573	Not Active
96380	Not Active	96445	Not Active	96510	NONE	96574	Not Active
96381	B-M-W	96446	Not Active	96511	B1-I-N	96575	Not Active
96382	B-M-W	96447	Not Active	96512	NONE	96576	Not Active
96383	Not Active	96448	Not Active	96513	NONE	96577	Not Active
96384	Not Active	96449	Not Active	96514	Not Active	96578	Not Active
96385	Not Active	96450	Not Active	96515	Not Active	96579	Not Active
96386	Not Active	96451	Not Active	96516	NONE	96580	Not Active
96387	Not Active	96452	Not Active	96517	Not Active	96581	Not Active
96388	Not Active	96453	Not Active	96518	NONE	96582	Not Active
96389	Not Active	96454	Not Active	96519	Not Active	96583	Not Active
96390	Not Active	96455	Not Active	96520	F-U	96584	Not Active
96391	Not Active	96456	Not Active	96521	F	96585	Not Active
96392	Not Active	96457	Not Active	96522	F	96586	Not Active
96393	Not Active	96458	Not Active	96523	Not Active	96587	Not Active
96394	Not Active	96459	Not Active	96524	Not Active	96588	Not Active

CONDITIONS APPLIED TO MAIL ADDRESSED TO MILITARY POST OFFICES OVERSEAS—Continued

APO/ FPO	See Restrictions	APO/ FPO	See Restrictions	APO/ FPO	See Restrictions	APO/ FPO	See Restrictions
96589	Not Active	96654	Not Active	98719	Not Active	98783	Not Active
96590	Not Active	96655	Not Active	98720	Not Active	98784	Not Active
96591	Not Active	96656	Not Active	98721	Not Active	98785	Not Active
96592	Not Active	96657	Not Active	98722	Not Active	98786	Not Active
96593	Not Active	96658	Not Active	98723	Not Active	98787	Not Active
96594	Not Active	96659	Not Active	98724	Not Active	98788	Not Active
96595	Not Active	96660	NONE	98725	Not Active	98789	Not Active
96596	Not Active	96661	NONE	98726	Not Active	98790	Not Active
96597	Not Active	96662	NONE	98727	Not Active	98791	Not Active
96598	NONE	96663	NONE	98728	Not Active	98792	Not Active
96599	NONE	96664	NONE	98729	Not Active	98793	Not Active
96601	NONE	96665	NONE	98730	Not Active	98794	Not Active
96602	NONE	96666	NONE	98731	Not Active	98795	Not Active
96603	NONE	96667	NONE	98732	Not Active	98796	Not Active
96604	NONE	96668	NONE	98733	Not Active	98797	Not Active
96605	O	96669	NONE	98734	Not Active	98798	Not Active
96606	NONE	96670	NONE	98735	Not Active	98799	Not Active
96607	NONE	96671	NONE	98736	Not Active		
96608	NONE	96672	NONE	98737	Not Active		
96609	NONE	96673	NONE	98738	Not Active		
96610	NONE	96674	NONE	98739	Not Active		
96611	NONE	96675	NONE	98740	Not Active		
96612	NONE	96676	NONE	98741	Not Active		
96613	Not Active	96677	NONE	98742	Not Active		
96614	Not Active	96678	NONE	98743	Not Active		
96615	Not Active	96679	NONE	98744	Not Active		
96616	Not Active	96680	Not Active	98745	Not Active		
96617	Not Active	96681	NONE	98746	Not Active		
96618	NONE	96682	NONE	98747	Not Active		
96619	Not Active	96683	NONE	98748	Not Active		
96620	Not Active	96684	NONE	98749	Not Active		
96621	NONE	96685	Not Active	98750	Not Active		
96622	NONE	96686	NONE	98751	Not Active		
96623	NONE	96687	NONE	98752	Not Active		
96624	NONE	96688	Not Active	98753	Not Active		
96625	NONE	96689	Not Active	98754	Not Active		
96626	NONE	96690	Not Active	98755	Not Active		
96627	NONE	96691	Not Active	98756	Not Active		
96628	NONE	96692	Not Active	98757	Not Active		
96629	NONE	96693	Not Active	98758	Not Active		
96630	Not Active	96694	Not Active	98759	Not Active		
96631	Not Active	96695	Not Active	98760	Not Active		
96632	Not Active	96696	Not Active	98761	Not Active		
96633	NONE	96697	NONE	98762	Not Active		
96634	NONE	96698	NONE	98763	Not Active		
96635	NONE	96699	Not Active	98764	Not Active		
96636	Not Active	98701	Not Active	98765	Not Active		
96637	Not Active	98702	Not Active	98766	Not Active		
96638	Not Active	98703	Not Active	98767	Not Active		
96639	Not Active	98704	Not Active	98768	Not Active		
96640	Not Active	98705	Not Active	98769	Not Active		
96641	NONE	98706	Not Active	98770	Not Active		
96642	NONE	98707	Not Active	98771	Not Active		
96643	NONE	98708	Not Active	98772	Not Active		
96644	NONE	98709	Not Active	98773	Not Active		
96645	Not Active	98710	Not Active	98774	Not Active		
96646	Not Active	98711	Not Active	98775	Not Active		
96647	NONE	98712	Not Active	98776	Not Active		
96648	NONE	98713	Not Active	98777	Not Active		
96649	NONE	98714	Not Active	98778	Not Active		
96650	Not Active	98715	Not Active	98779	Not Active		
96651	Not Active	98716	Not Active	98780	Not Active		
96652	Not Active	98717	Not Active	98781	Not Active		
96653	Not Active	98718	Not Active	98782	Not Active		

RESTRICTIONS

CONDITIONS APPLIED TO MAIL ADDRESSED TO MILITARY POST OFFICES OVERSEAS—Continued

LEGEND

Form 2966-A, *Parcel Post Customs Declaration—United States of America* (one part customs declaration)

Form 2966-B, *Parcel Post Customs Declaration and Dispatch Note* (three part customs declaration)

AAFES = Army and Air Force Exchange Service
 APO = Army/Air Force Post Office
 Box R = Retired military personnel
 FPO = Fleet Post Office
 DMM = *Domestic Mail Manual*
 MOM = Military Ordinary Mail
 MPO = Military Post Office
 PAL = Parcel Airlift
 PSC = Postal Service Center
 SAM = Space Available Mail
 USDA = United States Department of Agriculture

Note: Mail order catalogs are prohibited as SAM or PAL mail.

A. Securities, currency, or precious metals in their raw, unmanufactured state are prohibited. Official shipments are exempt from this restriction.

B. Form 2966-A is required. Prepaid mail from a contractor addressed to a military organization for official use need not bear a customs declaration, but must be endorsed "Contents For Official Use--Exempt from Customs Requirement." Official mail from government agencies does not require a customs declaration or an exemption endorsement.

B1. Form 2966-B is required. Articles are liable for customs duty and/or purchase tax unless they are bona fide gifts intended for use by military personnel or their dependents. When the contents of a parcel meet these requirements, the mailer must endorse the customs form, "Certified to be a bona fide gift, personal effects, or items for personal use of military personnel and dependents," under the heading, Description of Contents.

B2. Form 2966-A is required except on official mail, which does not require customs declaration or exemption endorsement. The AAFES will furnish a computer listing of all items mailed from its activities to Philippine APOs. Other mail order companies must either use Form 2966-A on each item or provide computer lists. Computer listings must include a description of the items, the dollar value of the items, a complete address including the PSC box number and APO of the addressee, the date of mailing, the insurance or registry number, if applicable, and the serial number of any item over \$25 in value and any electrical item with a plug over \$15 in value.

B3. Form 2966-A is required for mailing between MPOs. Prepaid mail from contractors addressed to a military organization for official use need not bear customs declaration, but must be endorsed, "Contents for Official Use--Exempt from Customs Requirement." Official mail from government agencies does not require customs declaration or exemption endorsement.

C. Cigarettes and other tobacco products are prohibited.

C1. Obscene articles, prints, paintings, cards, films, videotapes, etc., and horror comics and matrices are prohibited.

D. Coffee is prohibited.

E1. Medicines or vaccines not conforming to French laws are prohibited.

E2. Any matter containing religious materials contrary to Islamic faith or depicting nude or seminude persons, pornographic or sexual items, or unauthorized political materials is prohibited.

E3. Radio transceivers or cordless telephones are prohibited.

F. Firearms of any type are prohibited in all classes of mail. See definition of firearms in DMM 124.5. This restriction does not apply to firearms mailed to or by official U.S. government agencies.

F1. Privately owned weapons addressed to an individual are prohibited in any class of mail.

F2. Importation of firearms is restricted to one shotgun and one single shot .22 caliber rifle per individual.

G. Only First-Class letters, second- and third-class mail is authorized.

H. Meats, including preserved meats, whether hermetically sealed or not, are prohibited.

H1. Pork or pork by-products are prohibited.

I. Mail of all classes must fit in a mail sack. Mail may not exceed the following dimensions:

Length

42" 72" length and girth combined

over 42" to 44" 24" girth

over 44" to 46" 20" girth

over 46" to 48" 16" girth

Maximum length 48"

I1. This restriction does not apply to registered mail.

I2. This restriction does not apply to official government mail marked MOM.

K. Mail that includes in the address the words, "Dependent Mail Section," may consist only of letter mail, newspapers, magazines and books. No parcel of any class containing any other matter may be mailed to the Dependent Mail Section. This restriction does not apply if the address does not include the words "Dependent Mail Section."

L. All official mail is prohibited.

M. Fruits, animals, and living plants are prohibited.

N. Registered mail is prohibited.

O. Personal mail addressed to vessels using this number is limited to unregistered First-Class Mail and certified mail. Other classes of mail are prohibited.

P. APO is used for the receipt and dispatch of official mail only.

Q. Mail may not exceed 66 pounds, and size is limited to 42 inches maximum length and 72 inches maximum length and girth combined.

R. All alcoholic beverages, including those mailable under DMM part 124.42, are prohibited.

T. Mailings of case lots of food and supplemental household shipments must be approved by the sender's parent agency prior to mailing.

U. Parcels must weigh less than 16 ounces when addressed to Box R. This restriction does not apply to mail endorsed "Free Matter for the Blind or Handicapped."

U1. Mail is limited to First-Class Mail weighing 12 ounces or less when addressed to Box R. This restriction does not apply to mail endorsed "Free Matter for the Blind or Handicapped." Video tapes are prohibited when addressed to Box R regardless of weight.

U2. Mail is limited to First-Class letters only when addressed to Box R.

U3. Mail is limited to First-Class correspondence (including voice and video cassettes), newspapers, magazines, photographs, not exceeding 16 ounces, when addressed to Box R.

W. Meat products, such as dried beef, salami, and sausage, may be mailed, provided they remain in their original, hermetically sealed packages and bear USDA certification. Other meats, bones, skin, hair, feathers, horns or hoofs of hoofed animals, wool samples, tobacco leaves, including chewing and pipe tobacco, snuff, cigars, and cigarettes, or obscene material, including obscene drawings, photographs, films, and carvings, are prohibited. Exception: 200 grams of tobacco per parcel are permitted duty free.

X. Personal mail is limited to First-Class Mail (to include audio cassettes and voice tapes) weighing 11 ounces or less. This limitation does not apply to official mail.

Y. Mail is limited to First-Class and Priority Mail only. All second-class, third-class, and fourth-class mail (including SAM and PAL) are not authorized. This restriction also applies to official mail.

—Transportation Department, 3-18-93

Price List for Supply Items

A postal price list for supply items issued from the Postal Service materiel distribution centers follows. Items listed are O Series, general office supplies, listed in Postal Service item number (PSIN) sequence. File this list for future reference in the appendix section of Publication 247, *USPS Materiel Management Equipment and Supply Catalog*.

Subsequent price lists will continue to be published in the *Postal Bulletin* rather than Materiel Logistics Bulletins (MLBs), as stated in the contents section of Publication 247, to reach a larger number of customers. Submit all comments and suggestions regarding Publication 247 to the MANAGER INVENTORY SUPPORT, TOPEKA KANSAS 66624-9501.

PSIN	SN	Description	Quantity	Amount
O3	7530-02-000-8938	Cards, Training, Plain Detex.....	EA	0.02
O3P950	7530-02-000-8937	Cards, Training, Prepunch Detex.....	SE	68.21
O4	6675-02-000-8933	Template, Postnet Decoding.....	EA	0.10
O5B	7530-00-290-0599	Paper, Bond, White, Writing.....	RM	3.41
O6G	7530-00-290-0617	Paper, Bond, for Typewriter.....	RM	3.09
O7	6675-02-000-8940	Template, Bar Code FIM Locator Gauge.....	EA	0.19
O7A	6650-02-000-8941	Magnifier, Measuring.....	EA	31.87
O8B	7530-02-000-8003	Envelope, Wallet.....	EA	2.20
O9F	7530-00-286-6178	Paper Mimeograph.....	RM	2.78
O12C	7530-02-000-8891	Letterhead, U.S. Post Office, White.....	SH	0.00
O12D	7530-02-000-8892	Letterhead, U.S. Postal Service, With Seal.....	SH	0.01
O12E	7530-02-000-8893	Memorandum, U.S. Postal Service.....	SH	0.01
O13	7530-02-000-8935	Routing Slip.....	PD	0.30
O16G	7530-02-000-8894	Letterhead, Inspection Service, Postal Inspectors Only.....	RM	5.01
O17B	7530-02-000-8807	Paper, Computer, 10 $\frac{1}{2}$ " x 11", 1 Point.....	CT	23.08
O17C	7530-02-000-8483	Paper, Computer, 10 $\frac{1}{2}$ " x 11", 2 Point.....	CT	33.54
O17D	7530-02-000-8808	Paper, Computer, 10 $\frac{1}{2}$ " x 11", 3 Point.....	CT	34.56
O17E	7530-02-000-8809	Paper, Computer, 10 $\frac{1}{2}$ " x 11", 4 Point.....	CT	19.07
O17G	7530-02-000-8810	Paper, Computer X 10 $\frac{1}{2}$ " x 11", 5 Point.....	CT	19.87
O17H	7530-00-145-0414	Paper, Computer, 14 $\frac{1}{8}$ " x 11", 1 Point.....	CT	18.99
O17I	7530-02-000-8729	Paper, Computer, 8 $\frac{1}{2}$ " x 11", 1 Point.....	CT	12.39
O17J	7530-02-000-8811	Paper, Computer, 8 $\frac{1}{2}$ " x 11", 2 Point.....	CT	25.46
O17K	7530-02-000-8730	Paper, Computer, 14 $\frac{1}{8}$ " x 11", 2 Point.....	CT	28.01
O17L	7530-02-000-8731	Paper, Computer, 14 $\frac{1}{8}$ " x 11", 3 Point.....	CT	31.36
O17R	7530-02-000-8812	Paper, Computer, 9 $\frac{1}{2}$ " x 11", 3 Point.....	CT	20.73
O17S	7530-02-000-8813	Paper, Computer, 8 $\frac{1}{2}$ " x 11", 4 Point.....	CT	25.27
O17U	7530-02-000-8814	Paper, Computer, Laser.....	CT	18.75
O17V	7530-01-033-8891	Paper, Computer, Xerox 1200, 8 $\frac{1}{2}$ " x 11", 3-Hole Drilled.....	CT	17.98
O17W	7530-01-181-7174	Paper, Computer, Xerox 1200, 8 $\frac{1}{2}$ " x 11".....	CT	25.03
O17X	7530-01-338-0625	Paper, Computer, PSDS.....	CT	25.41
O19	7510-02-000-8936	Container, Personnel Services Centers.....	EA	0.18
O20I	7530-00-401-6910	Paper Set, Manifold and Carbon, White.....	BX	3.82
O20J	7530-00-072-2538	Paper Set, Manifold and Carbon, Yellow.....	BX	4.15
O20K	7530-00-550-7113	Paper, Manifold.....	RM	4.85
O21A	7530-00-223-7958	Pad, Columnar.....	PD	2.27
O22E	7530-00-959-4562	Pad, Writing Paper, Ruled.....	PD	1.36
O23A	7510-00-147-8475	Tab, Index, Pressure Sensitive, Blue.....	BX	0.51
O23B	7510-00-147-8477	Tab, Index, Pressure Sensitive, Clear.....	BX	0.52
O23C	7510-00-147-8480	Tab, Index, Pressure Sensitive, Green.....	BX	0.51
O23D	7510-00-147-8484	Tab, Index, Pressure Sensitive, Orange.....	BX	0.54
O23E	7510-00-147-8486	Tab, Index, Pressure Sensitive, Pink.....	BX	0.51
O23F	7510-00-147-8487	Tab, Index, Pressure Sensitive, Red.....	BX	0.53
O23G	7510-00-147-8488	Tab, Index, Pressure Sensitive, Yellow.....	BX	0.52
O25A	9905-02-000-8151	Letters, Gummed-Back, No. 11, Small.....	SH	0.17
O25B	9905-02-000-8152	Letters, Gummed-Back, No. 21, Medium.....	SH	0.28
O25C	9905-02-000-8153	Letters, Gummed-Back, No. 32, Large.....	SH	0.15
O25D	9905-02-000-8154	Letters, Transfer, Use With Signs 141A and C.....	SH	1.93
O25E	9905-02-000-8155	Letters, Transfer, Use With Sign 141B.....	SH	1.75
O26D	9310-00-292-7263	Label, City Carrier Case.....	PG	2.93
O26E	7530-00-782-6287	Label Rural Carrier Case, $\frac{7}{16}$ " x 28".....	PG	2.49
O26F	7530-00-782-3989	Label, Lock Box Numbering and Rural Carrier Case $\frac{3}{8}$ " x 2 $\frac{1}{2}$ ".....	SH	0.05
O26G	7690-01-000-9287	Label, Carrier Case Header $\frac{3}{16}$ " x 23", Yellow, 14 or 18 Strips.....	SH	0.31
O26H	7690-02-000-8817	Label, Carrier Case Header $\frac{1}{16}$ " x 23", Yellow, 14 or 18 Strips.....	SH	0.10
O26I	7690-02-000-8818	Label, Carrier Case Header $\frac{5}{16}$ " x 23", Yellow, 14 or 18 Strips.....	SH	0.07
O26J	7690-02-000-8816	Label, Carrier Case Header $\frac{3}{16}$ " x 23", Green, 14 or 18 Strips.....	SH	0.64

Price List for Supply Items—Continued

PSIN	SN	Description	Quantity	Amou
O26K	7690-01-000-9288	Label, Carrier Case Header $\frac{5}{8}$ " x 23", Green, 14 or 18 Strips	SH	0
O26L	7690-01-000-9291	Label, Carrier Case Header, $\frac{1}{16}$ " x 23", Green, 14 or 2 Strips.....	SH	0.
O26M	7690-02-000-8819	Label, Carrier Case Header, $\frac{9}{16}$ " x 23", White, 19 Strips	SH	0.
O26N	7690-02-000-8820	Label, Carrier Case Header, $\frac{1}{16}$ " x 23", White, 16 Strips.....	SH	0.
O26P	7690-02-000-8821	Label, Carrier Case Header, $\frac{9}{16}$ " x 23", White, 14 or 18 Strips.....	SH	0.
O26Q	7690-01-000-9292	Label, Carrier Case Header, $\frac{5}{8}$ " x 23", White, 14 or 18 Strips	SH	0.
O26R	7690-01-000-9313	Label, Carrier Case Header, $\frac{1}{16}$ " x 23", White, 14 or 18 Strips	SH	0.
O26S	7690-02-000-8822	Label, Carrier Case Header, $\frac{9}{16}$ " x 23", Pink, 14 or 18 Strips	SH	0.
O26T	7690-02-000-8823	Label, Carrier Case Header, $\frac{5}{8}$ " x 23", Pink, 14 or 18 Strips	SH	0.
O26U	7690-02-000-8824	Label, Carrier Case Header, $\frac{1}{16}$ " x 23", Pink, 14 or 18 Strips.....	SH	0.
O26V	7690-01-000-9314	Label, Carrier Case Header, $\frac{9}{16}$ " x 23", Salmon, 14 or 18 Strips.....	SH	0.2
O26W	7690-02-000-8825	Label, Carrier Case Header, $\frac{5}{8}$ " x 23", Salmon, 14 or 18 Strips	SH	0.4
O26Y	7690-02-000-8826	Label, Carrier Case Header, $\frac{1}{16}$ " x 23", Salmon, 14 or 18 Strips	SH	0.1
O27A	7530-00-577-4368	Label, File Folder, Light Blue Stripe.....	BX	0.4
O27B	7530-00-577-4373	Label, File Folder, Goldenrod Stripe	BX	0.3
O27D	7530-00-577-4369	Label, File Folder, Green Stripe.....	BX	0.3
O27E	7530-00-577-4371	Label, File Folder, Dark Red Stripe.....	BX	0.4
O27F	7530-00-577-4376	Label, File Folder, No Stripe	BX	0.42
O27G	7530-00-782-3961	Label, Water-Repellent	PD	0.65
O28	7530-02-000-8827	Label Stripes, Carrier Case Header, Continuous Feed, 16	CT	214.59
O29C	7530-00-912-3924	Tape, Postage Meter, Pitney Bowes 5400 Meters.....	DZ	10.12
O29D	7530-00-912-3925	Tape, Postage Meter, Singer-Frieden 9010, Pitney Bowes 4000 Meters	DZ	4.13
O30A	8135-00-270-8726	Tape, Gummed, Light Duty.....	RO	1.74
O30B	8135-00-271-1446	Tape, Gummed, Medium Duty	RO	1.62
O30C	8135-00-598-6097	Tape, Paper, 2-Ply	RO	3.15
O31B	7510-00-551-9821	Tape, Pressure	RO	0.19
O32A	7530-00-222-3455	Paper, Calculator, $2\frac{1}{4}$ " Wide	RO	0.38
O32B	7530-00-222-3456	Paper, Calculator, $3\frac{1}{16}$ " Wide	RO	0.57
O32C	7530-00-286-9055	Paper, Calculator, $3\frac{3}{8}$ " Wide	RO	0.63
O32D	7530-00-286-8352	Paper, Calculator, 3" Wide	RO	0.49
O33	7530-00-784-6143	Paper, Calculator, Carbonless.....	RO	0.56
O36A	NA	Calendar Pad, Desk Refill, $3\frac{5}{8}$ " x $5\frac{7}{8}$ "	EA	1.33
O36B	NA	Calendar Pad, Desk Refill, 3" x $3\frac{5}{8}$ "	EA	1.16
O36C	NA	Calendar Wall, $11\frac{5}{8}$ " x $8\frac{7}{8}$ "	EA	0.17
O38A	7520-00-162-6156	Stand, Calendar Pad, Desk, $6\frac{1}{8}$ " x $7\frac{5}{8}$ "	EA	1.26
O38B	7520-00-162-6153	Stand, Calendar Pad, Desk, 4" x $6\frac{1}{2}$ "	EA	0.96
O39A	7530-00-244-4035	Paper, Carbon, Typewriter, $8\frac{1}{2}$ " x $11\frac{1}{2}$ "	HD	0.91
O39E	7530-00-244-4073	Paper, Carbon, Typewriter, 5" x $8\frac{1}{2}$ "	HD	1.54
O40A	7530-02-000-8262	Paper, Carbon, Typewriter, $3\frac{1}{2}$ " x $8\frac{1}{2}$ "	HD	0.96
O41A	7530-00-782-3997	Paper, Carbon, Pencil, $3\frac{1}{2}$ " x 6"	HD	0.87
O41B	7530-00-782-3990	Paper, Carbon, Pencil, $3\frac{1}{2}$ " x $12\frac{1}{2}$ "	HD	1.35
O41C	7530-00-782-3991	Paper, Carbon, Pencil, $3\frac{3}{4}$ " x 14"	HD	1.66
O41D	7530-00-782-3992	Paper, Carbon, Pencil, $3\frac{3}{4}$ " x 10"	HD	1.18
O41F	7530-00-782-3993	Paper, Carbon, Pencil, 5" x 10"	HD	1.29
O41H	7530-00-782-3994	Paper, Carbon, Pencil, 6" x 8"	HD	1.20
O41I	7530-00-782-3996	Paper, Carbon, Pencil, $6\frac{1}{2}$ " x 10"	HD	1.24
O41U	7530-01-071-9769	Paper, Carbon, Pencil, $8\frac{1}{2}$ " x 11"	HD	1.52
O48	7110-02-000-8083	Mail Distribution Case	CT	16.28
O52	7530-01-000-9331	Envelope, Welcome Wagon Kit	EA	0.05
O53A	7110-02-000-8108	Closure, Corrugated, P.O. Box, No. 1 Box	EA	0.02
O53B	7110-02-000-8109	Closure, Corrugated, P.O. Box, No. 2 Box	EA	0.03
O53C	7110-02-000-8110	Closure, Corrugated, P.O. Box, No. 3 Box	EA	0.05
O53D	7110-02-000-8111	Closure, Corrugated, P.O. Box, 700 Series Box.....	EA	0.02
O53E	7110-02-000-8112	Closure, Corrugated, P.O. Box, 1300 Series Box.....	EA	0.02
O53F	7110-02-000-8113	Closure, Corrugated, P.O. Box, 1500 Series Box.....	EA	0.03
O54A	7110-02-000-8170	Stool Seat, Replacement.....	EA	14.33
O54B	7110-02-000-8171	Stool Seat, Cover.....	EA	4.25
O62	8135-00-290-3408	Paper, Kraft, 24 x 36"	SH	0.04
O63	8135-02-000-8889	Paper, Kraft, 36 x 40"	SH	0.06
O65	7540-02-000-8020	Envelope, Messenger Service.....	EA	0.06
O66	7530-01-000-8805	Folder, Official Personnel	EA	0.17
O67	7530-02-000-8804	Folder, Medical, Employee	EA	0.20

Price List for Supply Items—Continued

PSIN	SN	Description	Quantity	Amount
O73C	7530-00-285-2555	Stencil, Duplicating Machine	QR	9.48
O76E	NA	Year Type, Models D, K, and G	EA	0.91
O79A	9310-01-000-9222	Paper, Case Header Card, One End Scored	EA	0.01
O79C	9310-02-000-8038	Paper, Case Header Card, Both Ends Scored	EA	0.01
O85B5	7530-00-261-3804	Card Set, Guide, File, 3" x 5", 1/2-Cut Tab, Blank	PG	1.61
O85G5	7530-00-261-3819	Card Set, Guide, File, 5" x 8", 1/2-Cut Tab, Blank	PG	2.79
O86F3	7530-00-988-6515	Card Set, Guide, File, 9.5" x 11.75" 1/2-Cut Tabs	EA	0.10
O87B1	7530-00-281-5945	Folder, File, 1/2-Cut Self-Tabs	EA	0.04
O87B2	7530-00-281-5945	Folder, File, Straight Cut Self-Tabs	EA	0.03
O87H	7530-02-000-8806	Envelope, Vehicle Accident Report Kit	EA	0.02
O87K	7510-02-000-8114	Jac Clear Vinyl Envelope	EA	0.03
O87P	7510-00-584-2491	Portfolio, Coated, Leather-Grained Paper	EA	0.21
O87T	7510-02-000-8753	Time Card Rack Adapter	EA	0.08
O87X	7510-02-000-8754	Portfolio, Folder, Double-Pocket, USPS Emblem	EA	0.16
O89B	7530-00-160-8477	Index Sheet Set, Loose-Leaf Ring Binder	SE	1.07
O89E	7530-00-261-3813	Card Set, Guide, File, 5" x 8", 1/2-Cut Tab, A to Z	SE	1.05
O89I	7530-02-000-8175	Index Sheet Set	SE	0.68
O91	9310-00-290-4001	Board, Railroad	SH	0.32
O91SP	5340-02-000-8878	Lock Replacement, Cylinder	EA	7.99
O95D	8135-00-782-3948	Clipboard	EA	0.00
O96	7530-02-000-9826	Folder, File, Prong Fasteners	EA	0.42
O96A	7530-01-000-9241	Folder, File, Insert, Cut 1	EA	0.14
O96B	7530-01-000-9242	Folder, File, Insert, Cut 2	EA	0.14
O96C	7530-01-000-9243	Folder, File, Insert, Cut 3	EA	0.14
O96D	7530-01-000-9244	Folder, File, Insert, Cut 4	EA	0.14
O103HD2	NA	Year Type, Model HD-2	EA	0.82
O133E	NA	Year Type, Model Flier and M Machines Using 1207 Die Hubs	EA	1.90
O135D	7530-00-286-8363	Book, Memorandum, 8 1/2 x 14"	EA	4.62
O137A	7530-00-222-3521	Book, Memorandum, 5 1/2 x 8"	EA	1.51
O137B	7530-00-286-6207	Book, Memorandum, 8" x 5 1/2"	EA	2.22
O138A	7530-02-000-8027	Notebook, Stenographer's	EA	0.37
O150B	8135-01-000-9436	Tag, Shipping Penalty, Manila	EA	0.01
O152	8135-00-292-2354	Tag, Shipping, Paper	EA	0.01
O153	8135-01-000-9281	Tag, Red Fly	EA	0.00
O212	7510-00-782-6253	Ink, Black, for Shiny Metal Surfaces, 2 ozs	CN	3.91
O213	7510-00-807-4936	Ink, Red, for Postage Meter Machines, One Pint	CN	8.15
O214B	7490-02-000-8193	Ink Roller, Universal, Model JP	EA	2.95
O214C	7490-02-000-8092	Ink Roller, Universal, Model RG, Upper	EA	2.49
O214D	7490-02-000-8699	Ink Roller, Universal, Model RG, Lower	EA	2.61
O214F	7490-01-000-9489	Ink Roller, Model 5409, Upper	EA	5.25
O214G	7490-02-000-8209	Ink Roller, Model 5409, Lower	EA	4.40
O217E	NA	Year Type, Model G	EA	1.69
O247A	7690-02-000-8692	Numerals, P.O. Box, 1500 Series, Doors, 1-500	BK	2.44
O247B	7690-02-000-8789	Numerals, P.O. Box, 1500 Series, Doors, 501-1000	BK	3.14
O247C	7690-02-000-8833	Numerals, P.O. Box, 1500 Series, Doors, 1001-1500	BK	1.90
O247D	7690-02-000-8834	Numerals, P.O. Box, 1500 Series, Doors, 1501-2000	BK	3.59
O247E	7690-02-000-8835	Numerals, P.O. Box, 1500 Series, Doors, 2001-2500	BK	3.41
O247F	7690-02-000-8836	Numerals, P.O. Box, 1500 Series, Doors, 2501-3000	BK	1.88
O247G	7690-02-000-8837	Numerals, P.O. Box, 1500 Series, Doors, 3001-3500	BK	1.58
O247H	7690-02-000-8838	Numerals, P.O. Box, 1500 Series, Doors, 3501-4000	BK	1.70
O247I	7690-02-000-8839	Numerals, P.O. Box, 1500 Series, Doors, 4001-4500	BK	1.60
O247J	7690-02-000-8840	Numerals, P.O. Box, 1500 Series, Doors, 4501-5000	BK	1.47
O247K	7690-02-000-8841	Numerals, P.O. Box, 1500 Series, Doors, 5001-5500	BK	3.10
O247L	7690-02-000-8842	Numerals, P.O. Box, 1500 Series, Doors, 5501-6000	BK	3.92
O247M	7690-02-000-8843	Numerals, P.O. Box, 1500 Series, Doors, 6001-6500	BK	1.89
O247N	7690-02-000-8844	Numerals, P.O. Box, 1500 Series, Doors, 6501-7000	BK	2.41
O247O	7690-02-000-8845	Numerals, P.O. Box, 1500 Series, Doors, 7001-7500	BK	2.78
O247P	7690-02-000-8846	Numerals, P.O. Box, 1500 Series, Doors, 7501-8000	BK	2.51
O247Q	7690-02-000-8847	Numerals, P.O. Box, 1500 Series, Doors, 8001-8500	BK	6.76
O247R	7690-02-000-8848	Numerals, P.O. Box, 1500 Series, Doors, 8501-9000	BK	2.09
O247S	7690-02-000-8849	Numerals, P.O. Box, 1500 Series, Doors, 9001-9500	BK	2.39
O247T	7690-02-000-8850	Numerals, P.O. Box, 1500 Series, Doors, 9501-10000	BK	1.85

Price List for Supply Items—Continued

PSIN	SN	Description	Quantity	Amo
O248A	7690-02-000-8851	Numerals, P.O. Box, 1500 Series, Drawers, 1-500.....	BK	
O248B	7690-02-000-8852	Numerals, P.O. Box, 1500 Series, Drawers, 501-1000.....	BK	
O248C	7690-02-000-8853	Numerals, P.O. Box, 1500 Series, Drawers, 1001-1500.....	BK	
O248D	7690-02-000-8854	Numerals, P.O. Box, 1500 Series, Drawers, 1501-2000.....	BK	
O248E	7690-02-000-8855	Numerals, P.O. Box, 1500 Series, Drawers, 2001-2500.....	BK	
O248F	7690-02-000-8856	Numerals, P.O. Box, 1500 Series, Drawers, 2501-3000.....	BK	
O248G	7690-02-000-8857	Numerals, P.O. Box, 1500 Series, Drawers, 3001-3500.....	BK	
O248H	7690-02-000-8858	Numerals, P.O. Box, 1500 Series, Drawers, 3501-4000.....	BK	
O248J	7690-02-000-8859	Numerals, P.O. Box, 1500 Series, Drawers, 4001-4500.....	BK	
O248K	7690-02-000-8860	Numerals, P.O. Box, 1500 Series, Drawers, 4501-5000.....	BK	
O248L	7690-02-000-8861	Numerals, P.O. Box, 1500 Series, Drawers, 5001-5500.....	BK	
O248M	7690-02-000-8862	Numerals, P.O. Box, 1500 Series, Drawers, 5501-6000.....	BK	
O248N	7690-02-000-8863	Numerals, P.O. Box, 1500 Series, Drawers, 6001-6500.....	BK	
O248O	7690-02-000-8864	Numerals, P.O. Box, 1500 Series, Drawers, 6501-7000.....	BK	
O248P	7690-02-000-8865	Numerals, P.O. Box, 1500 Series, Drawers, 7001-7500.....	BK	
O248Q	7690-02-000-8866	Numerals, P.O. Box, 1500 Series, Drawers, 7501-8000.....	BK	
O248R	7690-02-000-8867	Numerals, P.O. Box, 1500 Series, Drawers, 8001-8500.....	BK	
O248S	7690-02-000-8868	Numerals, P.O. Box, 1500 Series, Drawers, 8501-9000.....	BK	
O248T	7690-02-000-8869	Numerals, P.O. Box, 1500 Series, Drawers, 9001-9500.....	BK	
O248U	7690-02-000-8870	Numerals, P.O. Box, 1500 Series, Drawers, 9501-10000.....	BK	
O249	7690-02-000-8871	Letters, PO Box, A-Z, AA-AP.....	BK	
O292E	7520-00-543-7149	Pen, Ballpoint.....	EA	
O306A1	5340-02-000-8328	Locks, P.O. Box, Cam 1, for 1800/2900 P.O. Boxes.....	EA	
O306A2	5340-02-000-8337	Locks, P.O. Box, Cam 2, for 1800/2900 P.O. Boxes.....	EA	
O306B	5340-02-000-8177	Locks, P.O. Box, Cam 1, for 1801, 1802, 1803 P.O. Boxes.....	EA	
O306D	5340-02-000-8178	Locks, P.O. Box, Cam 2, for 1804, 1805, P.O. Boxes.....	EA	
O306S	5305-00-059-4550	Screws, Mounting, 6-32 x $\frac{5}{16}$ ".....	PG	
O308	5340-02-000-8179	Locks, P.O. Box, for 1500 P.O. Boxes.....	EA	
O308S	5305-00-957-6265	Screws, Mounting, 6-32 x $\frac{1}{4}$ ".....	PG	
O316	7340-00-488-7939	Knife, Paring.....	EA	
O317A	5110-00-952-9112	Knife, Twine, Finger Ring, Size 6, $\frac{5}{8}$ ".....	EA	
O317B	5110-00-952-9111	Knife, Twine, Finger Ring, Size 8, $\frac{1}{16}$ ".....	EA	
O317C	5110-00-952-9110	Knife, Twine, Finger Ring, Size 9, $\frac{3}{4}$ ".....	EA	
O317D	5110-00-595-8411	Knife, Twine, Finger Ring, Size 10, $\frac{1}{16}$ ".....	EA	
O317E	5110-00-952-9109	Knife, Twine, Finger Ring, Size 12, $\frac{7}{8}$ ".....	EA	
O318	5110-00-161-6912	Shears, Straight Trimmers.....	EA	
O339A	7510-00-914-1575	Ribbon, Times Stamp, Cincinnati.....	EA	
O339C	7510-02-000-8939	Ribbon, Time Stamp, Simplex.....	EA	
O349A	8125-02-000-8025	Cap, Spout, Ink Can.....	EA	
O370A	7520-02-000-8084	Pad, Rubber, 12" x 16" x $\frac{3}{8}$ ".....	EA	
O370B	7520-02-000-8872	Pad, Rubber, 6" x 12" x $\frac{1}{4}$ ".....	EA	
O372A	7510-00-823-7872	Finger Pad, Rubber, Size 11.....	EA	
O372B	7510-00-823-7873	Finger Pad, Rubber, Size 11 $\frac{1}{2}$	EA	
O372C	7510-00-823-7874	Finger Pad, Rubber, Size 12.....	EA	
O372D	7510-00-254-9056	Finger Pad, Rubber, Size 13.....	EA	
O372E	7510-00-823-7876	Finger Pad, Rubber, Size 14.....	EA	
O374	7510-00-604-4150	Moistening Compound, Fingertip.....	EA	
O385A	7510-00-205-1439	Bands, Rubber, Size 16, $\frac{1}{16}$ " x 2 $\frac{1}{2}$ ".....	BX	
O385B	7510-00-243-3437	Bands, Rubber, Size 18, $\frac{1}{16}$ " x 3".....	BX	
O385C	7510-00-243-3434	Bands, Rubber, Size 32, $\frac{1}{8}$ " x 3".....	BX	
O385E	7510-00-243-3435	Bands, Rubber, Size 64, $\frac{1}{4}$ " x 3 $\frac{1}{2}$ ".....	BX	
O385F	7510-00-205-0371	Bands, Rubber, Size 84, $\frac{1}{2}$ " x 3 $\frac{1}{2}$ ".....	BX	
O385G	7510-01-058-9974	Bands, Rubber, Size 64, $\frac{1}{4}$ " x 3 $\frac{1}{2}$ ".....	64	
				MAILER
O387TD	7510-02-000-8751	Binder, New Employee Handbook.....	EA	
O389A	7510-00-281-5972	Holder, Binder Label, 1 $\frac{1}{2}$ " x 2 $\frac{3}{4}$ ".....	BX	
O389B	7510-00-272-3044	Holder, Binder Label, 2 $\frac{7}{16}$ " x 2 $\frac{3}{4}$ ".....	BX	
O390C	7510-00-530-8881	Binder, Loose-Leaf Ring, 2".....	EA	
O390I	7510-01-000-9351	Binder, ZIP + 4, 1.85" Cap.....	EA	
O390J	7510-02-000-8749	Binder, ZIP + 4, 2.15" Cap.....	EA	
O390K	7510-01-000-9363	Binder, ZIP + 4, 2.4" Cap.....	EA	
O391B	7510-01-000-9329	Binder, holds 9 $\frac{1}{2}$ " x 12" sheets.....	EA	
O391EM	7510-02-000-8750	Binder, Express Mail.....	EA	

Price List for Supply Items—Continued

PSIN	SN	Description	Quantity	Amount
O391M	7510-00-281-6180	Binder, Loose-Leaf Ring, 1"	EA	1.33
O391T	7510-00-281-4309	Binder, Loose-Leaf, Report Cover	EA	0.66
O392	7520-00-281-5932	Box, Document	EA	5.31
O393SP	7520-00-240-5498	File, Arch Board	EA	3.73
O394A	7520-00-286-6957	Box, File 3" x 5"	EA	3.92
O394B	7520-00-286-6958	Box, File 4" x 6"	EA	3.88
O394C	7520-00-286-6959	Box, File 5" x 8"	EA	4.28
O399A	7510-02-000-8125	Binder, Ms Handbook, 1", 3-Ring	EA	1.81
O399B	7510-02-000-8173	Binder, Ms Handbook, 1½", 6-Ring	EA	2.97
O405B	7520-00-257-5006	Staple Remover	EA	2.02
O407A	5340-01-000-9399	Fastener, Oval Blunt, Dead Lock	PG	0.49
O421A	5210-02-000-8096	Tape, Measuring	EA	0.64
O427	7290-02-000-8014	Holder, Twine	EA	6.02
O429	7510-00-161-6211	Cup, Glass, Desk Use for Pins, Clips, Sponges	EA	0.26
O430	7920-00-161-6219	Sponge, Desk	EA	0.66
O431	7520-00-241-2981	Moistener	EA	0.23
O550H	7510-02-000-8035	Handle, Stamp, for Rubber Postmarking, Canceling Stamps	EA	0.96
O570H	7510-02-000-8095	Handle, Dating Stamp	EA	0.43
O570R	7510-01-000-9263	Rubber All-Purpose Dating Stamp, Handle, Wood	EA	0.43
O592	7520-02-000-8079	Date Stamp, 1½"	EA	0.84
O593	7520-00-271-8884	Date Stamp, 2"	EA	0.75
O595	7520-00-634-1573	Numbering Stamp, Numerals 0-9	EA	0.96
O602B	7510-02-000-8091	Pads, Inking, Small	EA	2.03
O603A	7510-02-000-8873	Pads, Inking, Large	EA	1.75
O624	9905-00-782-3768	Label Holder	EA	0.34
O625	9905-02-000-8888	Holder, Tag, ACT	CT	30.10
O625A	5975-00-074-2072	Ties, Cable, ACT tag	PG	6.75
O627	9905-02-000-8693	Label Holder, Dual	EA	0.90
O635	7520-02-000-8087	Rubber Postmarking, Canceling Stamp, Type (Set)	SE	0.67
O636A	5360-02-000-8694	Label Holder Spring	EA	0.06
O637	7520-02-000-8007	Rubber Receiving, Dating Stamp, Type, Pica Hour	SE	2.39
O642	7520-01-000-9100	Rubber All-Purpose Dating Stamp, Pica Year Type, Rubber, for Nos. 550, 570, 552	EA	0.05
O646A	7520-02-000-8194	Rubber Type, Date, ¾" Face	EA	2.98
O646B	7520-02-000-8090	Holder, Type for Item 0646A	EA	1.53
O647A	7520-02-000-8192	Rubber Type, Date, ¾" Face	EA	3.39
O647B	7520-02-000-8874	Holder, Type, for Item 0647A	EA	2.24
O660B	7510-00-057-9305	Ink, Red, Rubber Stamp Pads, 8 oz	BT	1.08
O660C	7510-00-161-4240	Ink, Red, Rubber Stamp Pads, 2 oz	BT	0.55
O671	7510-00-526-1742	Stamp Pad, Small	EA	0.31
O672	7510-00-526-1741	Stamp Pad, Large	EA	0.63
O675A	7520-00-243-9310	Stamp Rack, Holds to 24 Rubber Stamps	EA	4.75
O675B	7520-00-227-1452	Stamp Rack, Holds to 9 Rubber Stamps	EA	2.06
O691G	NA	Year Type, Model Flier and M Machines Using 1207-G Die Hubs	EA	0.78
O702A	NA	Year Type, Steel Postmarker, Hammer Type	EA	0.96
O718A	7490-01-000-9047	Steel Postmarker, Year Type, Rotary Type	EA	0.94
O718B	7490-02-000-8725	Steel Postmarker, Replacement Felt Roller	EA	2.47
O718C	7510-02-000-8934	Handle, Grip Kit, Replacement	EA	6.24
O744	NA	Year Type, Steel, for No. 700 W/O Flange	EA	1.30
O747	NA	Year Type, Steel, for No. 700 W/ Flange	EA	1.16
O784	7510-00-780-8180	Ink Duplicating, Lithographic Press	CN	5.09
O790	7520-00-782-4010	Ink, for use on: 1) Felt Roller Replacement; 2) Ink Pad, Round Stamp Pad; 3) Rubber Postmarking, Canceling Stamp; 4) Precanceling Stamp; and 5) Rubber All-Purpose Dating Stamp.	EA	5.75
O790D	7510-02-000-8119	Canceling Ink, Black, Gallon	EA	53.20
O790E	7510-02-000-8120	Canceling Ink, Black Pint	CN	7.90
O790F	7510-02-000-8121	Canceling Ink, Black, 8 Ounce	CN	4.25
O790G	7510-02-000-8122	Canceling Ink, Black, 4 Ounce	EA	2.24
O791	7490-01-000-8890	Felt Roller Replacement	EA	1.96
O800	7520-00-162-7109	Numbering Machine, Automatic	EA	13.77
O802	7520-00-162-7117	Numbering Machine, Lever	EA	64.30
O804	6670-02-000-8799	Scale Rate Chart, Triner 804	EA	0.00
O813R	5340-02-000-8875	Closure Device	BX	2.12
O814A	5120-02-000-8061	Hand Presses, W/Lever, for PSIN 0815	EA	36.65

Price List for Supply Items—Continued

PSIN	SN	Description	Quantity	Amoi
O814B	5120-02-000-8722	Hand Presses, Plier Type, for PSINS 0816A & B	EA	25
O814C	5120-02-000-8063	Hand Presses, Plier Type, to Seal Postage Meters	EA	24
O815	5340-00-286-4069	Seal, Antipilferage, Cord Attachment, Dispatch of Foreign Mails	EA	4
O816A	5340-02-000-8876	Seal, Metal Band, $\frac{3}{8}$ " x 2 $\frac{3}{8}$ "	BX	17
O816B	5340-02-000-8877	Seal, Metal Band, $\frac{3}{8}$ " x 4 $\frac{1}{2}$ "	BX	25
O817A	5340-02-000-8123	Seal, Tin Band, Car Door	BX	49
O817C	5340-01-000-9240	Seal, Tin Band, for Regular Air Mail	BX	54
O818A	5340-02-000-8208	Seal, Antipilferage, International Mail Only	PG	19
O830	4010-00-161-9299	Chain, Welded	EA	2
O831	5340-01-000-9219	Padlock, Steel	EA	12
O852	6670-02-000-8769	Weight Sets	SE	12
O853	6670-02-000-8770	Scale, 4-Lb Capacity	EA	53
O854C	6670-02-000-8771	Scale Rate Chart, 100-Lb Parcel Post Beam	EA	0
O857C	6670-02-000-8772	Scale Rate Chart, Triner Peerless	EA	0
O857CD	6670-02-000-8773	Scale Rate Chart Overlay Decals	EA	0
O857D	6670-02-000-8774	Scale Rate Chart, Triner Imperial	EA	0
O857DD	6670-02-000-8775	Scale Rate Chart, Triner Decals	EA	0
O857DF	6670-02-000-8776	Scale Rate Chart, Triner 187ox fb	EA	0
O857DFD	6670-02-000-8777	Scale Rate Chart, Overlay Decals	EA	0
O857E	6670-02-000-8778	Scale Rate Chart, Chatillon, Recessed Screw Holes	EA	0
O857F	6670-02-000-8779	Scale Rate Chart, Chatillon, Flat Screw Holes	EA	0
O857I	6670-02-000-8780	Template, Triner, Imperial	EA	0
O857LR	6670-02-000-8781	Scale Rate Chart, Triner Peerless, L to R	EA	0
O857LRD	6670-02-000-8782	Scale Rate Chart Overlay Decals	EA	0
O857P	6670-02-000-8783	Template, Triner Peerless	EA	0
O857RL	6670-02-000-8784	Scale Rate Chart, Triner Peedes, R to L	EA	0
O857RLD	6670-02-000-8785	Scale Rate Chart Overlay Decals	EA	0
O859AA	6670-02-000-8787	Scale Rate Chart for 20-oz Scale, Triner	EA	0
O859AD	6670-02-000-8788	Scale Rate Chart Overlay Decals	EA	0
O859BB	6670-02-000-8790	Scale Rate Chart, Pitney	EA	0
O859BD	6670-02-000-8791	Scale Rate Chart Overlay Decals	EA	0
O859CC	6670-02-000-8792	Chart, Scale, Metal, Toledo 3111	EA	0
O859CD	6670-02-000-8793	Scale Rate Chart Overlay Decals	EA	0
O859E	6670-02-000-8794	Scale Rate Chart, Pennsylvania Scale Co. Ps-120	EA	0
O859ED	6670-02-000-8795	Scale Rate Chart Overlay Decals	EA	0
O860B	6670-02-000-8796	Scale Rate Chart, Triner Challenger	EA	0
O861B	6670-02-000-8797	Scale Rate Chart, Detecto	EA	0
O869SS	6670-02-000-8789	Scale Rate Chart, Auto Scale, Self-Service Postal Centers	EA	0
O875N	7530-02-000-8803	Envelope, Nonmailing	EA	0
O904	7490-02-000-8191	Cover, Postage Meter	EA	4
O905A	7520-00-550-7829	Dispenser, Gummed Tape	EA	30
O905C	7510-00-240-2411	Dispenser, Pressure-Sensitive Adhesive	EA	1
O905D	7520-00-609-5553	Dispenser, Tape Core Replacement	EA	0
O908A	7520-00-263-3425	Perforator, Paper, Desk, Hole Punch, $\frac{1}{32}$ " Holes	EA	19
O908B	7520-00-224-7589	Perforator, Paper, Desk, Hole Punch, $\frac{1}{4}$ " Holes	EA	3
O910A	5340-02-000-8190	Lock, Replacement, NDCBU, Opens Clockwise	PG	12
O910B	5340-02-000-8005	Lock, Replacement, NDCBU, Opens Counter-Clockwise	PG	12
O911A	7520-02-000-8879	Box, Cash, 12" x 10" x 3"	EA	10
O911B	7520-02-000-8078	Box, Cash, 14 $\frac{1}{2}$ " x 10 $\frac{1}{2}$ " x 5 $\frac{3}{4}$ "	EA	14
O911M	5340-01-000-9213	Lock, Replacement, for Cash and Stamp Boxes W/ Cylinder Cam Locks	EA	1
O912B	5340-02-000-8085	Lock Set, Inspector Offices	EA	81
O912C	5340-02-000-8102	Lock Set, J Key	EA	78
O912D	5340-02-000-8022	Lock Set, Lookout Gallery Breakout Doors	EA	81
O912E	5340-02-000-8880	Lock, Deadbolt	EA	13
O912F	5340-02-000-8019	Lock, Dead Bolt, Keyed Both Sides	EA	13
O913A	5340-01-000-9375	Cams, Replacement for NDCBUs, Offset, Amer. Device	PG	1
O913B	5340-01-000-9376	Cams, Replacement for NDCBUs, Offset, Auth Electric	PG	1
O913C	5340-01-000-9377	Cams, Replacement for NDCBUs, Offset, Boomer Ind	PG	1
O913D	5340-01-000-9378	Cams, Replacement for NDCBUs, Offset, Cutler-Federal	PG	1
O913E	5340-01-000-9379	Cams, Replacement for NDCBUs, Offset, Florence Corp	PG	1
O913F	5340-01-000-9380	Cams, Replacement for NDCBUs, Offset, Sun-Lite Mfg., Al's Tool & Die Enterprises	PG	1
O913G	5340-01-000-9381	Cams, Replacement for NDCBUs, Straight, Superior Steel Door & Trim	PG	1
O913H	5340-01-000-9382	Cams, Replacement for NDCBUs, Straight, Jensen General	PG	1

Price List for Supply Items—Continued

PSIN	SN	Description	Quantity	Amount
O913I	5340-01-000-9383	Cams, Replacement for NDCBUs, Offset, Amer. Locker Security System.....	PG	1.34
O913J	5340-01-000-9384	Cams, Replacement for NDCBUs, L-Shaped, United Business Equip.....	PG	1.27
O913K	5340-01-000-9385	Cams, Replacement for NDCBUs, Offset, Hudson Fabricating.....	PG	1.24
O913L	5340-02-000-8697	Cams, Replacement for NDCBUs, Offset.....	EA	2.33
O914MSG	8455-02-000-8201	Badges, PSDS, Gold.....	EA	0.05
O914MSLB	8455-02-000-8202	Badges, PSDS, Light Blue.....	EA	0.05
O914MSO	8455-02-000-8203	Badges, PSDS, Orange.....	EA	0.05
O914MSS	8455-02-000-8204	Badges, PSDS, Silver.....	EA	0.06
O914MST	8455-02-000-8205	Badges, PSDS, Tan.....	EA	0.05
O914MSW	8455-02-000-8124	Badges, PSDS, White.....	EA	0.05
O914MSY	8455-02-000-8206	Badges, PSDS, Yellow.....	EA	0.05
O915A	9905-02-000-8089	Label Holders, Brass, Card, 7/16" x 3 1/8".....	PG	5.24
O915B	9905-02-000-8008	Label Holders, Brass, Card, 9/16" x 2 7/8".....	PG	5.37
O915C	9905-02-000-8698	Label Holders, Brass, Card, 3/4" x 3 1/2".....	PG	1.82
O916	7110-02-000-8882	Rack, Time Card.....	EA	11.16
O916A	7110-02-000-8881	Rack, Badge, PSDS/FDRS.....	EA	17.06
O917C	8455-02-000-8097	Service Pins, 25-Year.....	EA	0.93
O917D	8455-02-000-8098	Service Pins, 35-Year.....	EA	2.83
O917E	8455-02-000-8099	Service Pins, 40-Year.....	EA	5.29
O917G	8455-02-000-8100	Service Pins, 30-Year.....	EA	4.37
O917H	8455-02-000-8101	Service Pins, 45-Year.....	EA	4.77
O919T	8455-00-898-9730	Badge, Identification, Personnel.....	EA	0.05
O926A	5110-00-240-6209	Pliers, Diagonal Cutting.....	EA	5.23
O926B	5110-00-011-4107	Cutter, Wire Washer.....	EA	0.90
O926E	5110-00-771-3732	Cutter, Steel Strapping.....	EA	49.53
O928	8135-00-956-2152	Strapping, Nonmetallic, 5/8" Wide, 1,000 Yds.....	SL	26.94
O929	5340-01-000-9498	Buckle, Nonmetallic Strapping for 0928.....	EA	0.04
O931	5340-02-000-8887	Dead Bolt, Night Latch, Inspector Key.....	EA	13.00
O931A	5340-02-000-8186	Lock, Threaded-Lock Cylinder, Inspector Key.....	EA	81.36
O931AHL	5340-01-000-9277	Lock, Mortise, Inspection Service Door, Left Hand.....	EA	78.72
O931AHR	5340-01-000-9278	Lock, Mortise, Inspection Service Lock, Right Hand.....	EA	2.78
O931AO	5340-02-000-8883	Lock, Threaded-Lock Cylinder, Inspector, "O" Key.....	EA	2.30
O931CYL	5340-02-000-8884	Lock, Replacement Rim Cylinder, Inspector Key.....	EA	1.93
O931O	5340-02-000-8885	Lock, Replacement Rim Cylinder, Inspector, "O" Key.....	EA	10.99
O933L	5340-01-000-9418	Lock, Cash and Stamp Drawer, IRT Workstations.....	SE	2.48
O933NR	5340-02-000-7508	Lock, Cash and Stamp Drawer, Not for IRT.....	EA	2.49
O935	5340-02-000-8942	Wheel, Replacement for 1226C.....	EA	2.58
O936	5340-00-985-6737	Caster, Rigid, Replacement, 3 1/2" Dia.....	EA	6.36
O947	5340-02-000-8886	Holder, Lock, Canvas.....	EA	5.75
O1026A	5340-00-985-6734	Caster, Rigid, 3 1/2" Radius.....	EA	3.36
O1026B	5240-00-985-6736	Caster, Swivel.....	EA	5.87
O1026C	5340-00-985-6735	Caster, Rigid, for 01046, 4" Radius.....	EA	3.88
O1030	7240-02-000-8018	Basket, Hamper, W/O Casters.....	EA	61.01
O1031	7240-02-000-8174	Basket, Hamper, W/ Casters.....	EA	62.80
O1032	7240-02-000-8086	Basket, Wire Letter Drop.....	EA	36.10
O1033I	7240-02-000-8198	Canvas Insert W/ Rope Lacing, for 01033.....	EA	19.67
O1033L	4020-00-000-7509	Basket Lacing, Use With 01033.....	EA	0.27
O1035	7240-02-000-8200	Carrying Basket, Canvas.....	EA	44.81
O1035A	7240-02-000-8031	Basket Pull Strap.....	EA	1.78
O1036	9905-02-000-8616	Marker, Container, White.....	EA	0.95
O1036A	9905-02-000-8617	Marker, Container, Blue.....	EA	0.95
O1036B	9905-02-000-8618	Marker, Container, Orange.....	EA	0.95
O1036C	9905-02-000-8619	Marker, Container, Green.....	EA	0.95
O1036D	9905-02-000-8260	Marker, Container, Violet.....	EA	0.99
O1036E	9905-02-000-8621	Marker, Container, Yellow.....	EA	0.98
O1036F	9905-02-000-8622	Marker, Container, Pink.....	EA	0.95
O1037A	7110-02-000-8023	Case Dividers, Letter Size.....	EA	1.53
O1037B	7110-02-000-8024	Case Dividers, for Flat Case Series.....	EA	2.62
O1046I	7240-02-000-8704	Insert, Canvas Hamper, for 01046.....	EA	26.38
O1046L	4020-02-000-8088	Lacing, Canvas Hamper, for 01046.....	EA	0.33
O1046R	7240-01-000-9398	Sleeve, Rim Repair, Canvas Basket.....	EA	0.82
O1046T	7240-02-000-8017	Tray, Basket, Canvas, for 01046.....	EA	43.95
O1048	7240-02-000-8705	Cover, Security.....	EA	9.19

Price List for Supply Items—Continued

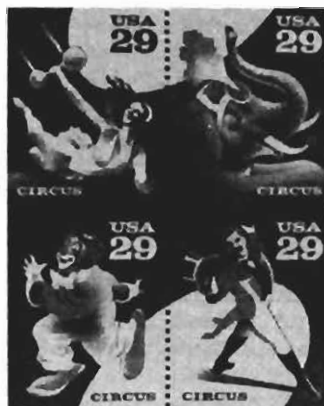
PSIN	SN	Description	Quantity	Amc
O1061B	7520-00-232-6817	Tray, Desk.....	EA	
O1062B	7520-00-494-2448	Support Set, Stacking Desk Tray	EA	
O1067	5340-01-000-9224	Strap, Mail Tray.....	EA	
O1075A	7240-01-000-9485	Insert, Utility Cart	EA	1
O1075B	7240-02-000-8188	Kit, Safety Modification	EA	
O1075C	7240-02-000-8189	Kit, Safety Modification B	EA	
O1075E	3920-02-000-8802	Kit, CON CON Modification	EA	
O1093	8115-02-000-8156	Container, Express Mail	EA	
O1094	8115-02-000-8157	Tube, Express Mail	EA	
O1095	8115-02-000-8758	Priority Cardboard Container	EA	
O1100A	7510-02-000-8759	Certificates, Beneficial Suggestion Award	EA	
O1100B	7510-02-000-8760	Certificates, Special Award.....	EA	
O1100F	7510-02-000-8761	Certificates of Appreciation	EA	
O1100H	7510-02-000-8762	Certificate, Service Award Folder, 1 Win.....	EA	
O1100J	9905-02-000-8146	Certificate, Frame, Suggestion Award.....	EA	4
O1100K	7510-02-000-8763	Certificate, Service Award Folder, 2 Win.....	EA	3
O1100N	7510-02-000-8764	Certificate, Service Award Retirement	EA	0
O1100P	7510-02-000-8765	Certificate, Service Award Posthumously	EA	0
O1100S	7510-02-000-8766	Certificate, Quality Step Increase	EA	0
O1100T	7510-02-000-8767	Certificate, Meritorious Service Award	EA	0
O1100U	7510-02-000-8768	Certificate, New PM Certificate of Appointment	EA	0
O1101	6675-02-000-8898	Template, Drafting, Edger Feeder	EA	1
O1102	6675-02-000-8899	Template, Drafting, SPLSM	EA	0
O1103	6675-02-000-8900	Template, Drafting, M-36, R.H.....	EA	1
O1104	6675-02-000-8901	Template, Drafting, M-36, L.H.....	EA	1
O1105	6675-02-000-8902	Template, Drafting, Conveyors.....	EA	1
O1106	6675-02-000-8903	Template, Drafting, Model 89.....	EA	1
O1107	6675-02-000-8904	Template, Drafting, Desk	EA	0
O1108	6675-02-000-8905	Template, Drafting, Desk	EA	0
O1109	6675-02-000-8906	Template, Drafting, Case and Table	EA	0
O1110	6675-02-000-8907	Template, Drafting, Flat Case	EA	0
O1111	6675-02-000-8908	Template, Drafting, Flat Case	EA	0
O1112	6675-02-000-8909	Template, Drafting, LSM.....	EA	1
O1113	6675-02-000-8910	Template, Drafting, Carrier Case	EA	1
O1114	6675-02-000-8911	Template, Drafting, Carrier Case	EA	0
O1115	6675-02-000-8912	Template, Drafting, Rural Case	EA	1
O1116	6675-02-000-8913	Template, Drafting, Sack Rack	EA	0
O1117	6675-02-000-8914	Template, Drafting, Letter Case.....	EA	1
O1118	6675-02-000-8915	Template, Drafting, Letter Case.....	EA	0
O1119	6675-02-000-8916	Template, Drafting, Gurney	EA	1
O1120	6675-02-000-8917	Template, Drafting, Tray Cart.....	EA	0
O1121	6675-02-000-8918	Template, Drafting, Distribution Ring	EA	0
O1122	6675-02-000-8919	Template, Drafting, Container	EA	0
O1123	6675-02-000-8920	Template, Drafting, Fsm	EA	0
O1124	6675-02-000-8921	Template, Drafting, Small BCS	EA	1
O1125	6675-02-000-8922	Template, Drafting, OCR/CS 32 CH Burrough.....	EA	0
O1126	6675-02-000-8923	Template, Drafting, 44 CH Burroughs.....	EA	0
O1127	6675-02-000-8924	Template, Drafting, 60 CH Burroughs.....	EA	0
O1128	6675-02-000-8925	Template, Drafting, 32 CH Pitney Bowes	EA	0
O1129	6675-02-000-8926	Template, Drafting, 44 CH Pitney Bowes	EA	0
O1130	6675-02-000-8927	Template, Drafting, 60 CH Pitney Bowes	EA	0
O1131	6675-02-000-8928	Template, Drafting, MAMUS Console	EA	0
O1132	6675-02-000-8929	Template, Drafting, AMF Flow System	EA	1
O1133	6675-02-000-8930	Template, Drafting, AMF Workstation	EA	1
O1134	6675-02-000-8931	Template, Drafting, OCR/CS Phase-11	EA	1
O1135	6675-02-000-8932	Template, Drafting, Self-Adhesive, Electro Com Bar Code Sorter	EA	1
O1150	4020-00-782-5572	Twine, Fibrous, Typing Letter Mail	BA	0
O1151	4020-00-782-5571	Twine, Fibrous, Rewrapping Parcels.....	BA	0
O1153	4020-00-282-6411	Twine, Fibrous, Tying Out Flats	BA	0
O1156	4020-00-782-5573	Twine, Fibrous, 1-Wrap Twine Tying Machine	CE	8
O1157	4020-00-782-5574	Twine, Fibrous, 2-Wrap Twine Tying Machine	CE	8
O1161A	8105-00-290-0340	Sack, Shipping, Jiffy, No. 0 Envelope, 6" x 10".....	EA	0
O1161B	8105-00-290-0343	Sack, Shipping, Jiffy, No. 2 Envelope, 8½" x 12"	EA	0

Price List for Supply Items—Continued

PSIN	SN	Description	Quantity	Amount
O1161C	8105-00-281-1436	Sack, Shipping, Jiffy, No. 5 Envelope, 10½" x 16".....	EA	0.14
O1161D	8105-00-281-1169	Sack, Shipping, Jiffy, No. 7 Envelope, 14¼" x 20".....	EA	0.24
O1162A	8105-00-959-2559	Envelope, Packaging, Cushioned, 6½" x 10".....	EA	0.16
O1162B	8105-00-959-2560	Envelope, Packaging, Cushioned, 9" x 12".....	EA	0.08
O1162C	8105-00-959-2561	Envelope, Packaging, Cushioned, 11" x 16½".....	EA	0.28
O1162D	8105-00-959-2562	Envelope, Packaging, Cushioned, 14¾" x 20½".....	EA	0.45
O1207B	7510-00-995-4852	Portfolio Plastic.....	EA	2.35
O1241B	7510-00-782-6275	Envelope, Transparent, 8¼" x 11-¼".....	EA	0.53
O1242A	7530-01-000-9473	Envelope, Glassine, 4" x 7".....	EA	0.02
O1242B	7530-01-000-9474	Envelope, Glassine, 4½" x 11".....	EA	0.02
O1242C	7530-01-000-9478	Envelope, Glassine, 9½" x 11".....	EA	0.05
O1243	9150-00-598-7122	Oil, Penetrating.....	CN	1.10
O1247A	8105-01-000-9218	Envelope, International Regular Mail, 9" x 15½".....	EA	0.05
O1247F	8105-01-000-9315	Envelope, International Regular Mail, 12" x 18".....	EA	0.05
O1248A	8135-02-000-8080	Plastic Film Parcel Rewrap, 15" x 25".....	RO	11.37
O1248B	8135-02-000-8081	Plastic Film Parcel Rewrap, 20" x 25".....	RO	17.50
O1248C	8135-02-000-8082	Plastic Film Parcel Rewrap, 30" x 25".....	RO	22.73
O1249A	9905-02-000-8158	Tray Markers, First Class, Blue.....	EA	0.17
O1249B	9905-02-000-8159	Tray Markers, First Class, Orange.....	EA	0.17
O1249C	9905-02-000-8160	Tray Markers, First Class, Green.....	EA	0.18
O1249D	9905-02-000-8161	Tray Markers, First Class, Violet.....	EA	0.17
O1249E	9905-02-000-8162	Tray Markers, First Class, Yellow.....	EA	0.18
O1249F	9905-02-000-8163	Tray Markers, First Class, Pink.....	EA	0.18
O1250A	9905-02-000-8164	Tray Markers, Nonpreferential, Blue.....	EA	0.17
O1250B	9905-02-000-8165	Tray Markers, Nonpreferential, Orange.....	EA	0.18
O1250C	9905-02-000-8166	Tray Markers, Nonpreferential, Green.....	EA	0.16
O1250D	9905-02-000-8167	Tray Markers, Nonpreferential, Violet.....	EA	0.16
O1250E	9905-02-000-8168	Tray Markers, Nonpreferential, Yellow.....	EA	0.15
O1250F	9905-02-000-8169	Tray Markers, Nonpreferential, Pink.....	EA	0.16
O1505B	8115-00-782-3940	Cartons, Corrugated, 7" x 7" x 3".....	BD	2.94
O1506	8115-00-782-3932	Cartons, for Accounting Paper.....	BD	10.96
O1508	8115-01-000-9220	Container, Corrugated, for APD's, 11" x 11" x 4".....	BD	4.73
O7100	9905-02-000-8044	Rack Label Holder.....	EA	1.09
O7501	7530-02-000-8828	Label Stencil.....	BX	9.13
O7502	7530-01-156-0118	Ink, Printing, Label Printing Machine.....	BT	7.59
O7503	7530-02-000-8829	Label, Printing Machine, 6,250.....	RO	5.79
O7503A	7530-02-000-8830	Label, Printing Machine, 25,000.....	RO	23.70
O7505A	7510-01-000-9225	Ink, OCR Original, OCR/CS Ink Jet Printer, Model 9140.....	CT	130.39
O7505B	7510-01-000-9226	Ink, OCR Make-Up, OCR/CS Ink Jet Printer, Model 9140.....	CT	67.85
O7505C	7510-01-000-9227	Cleaner, OCR, OCR/CS Ink Jet Printer.....	CT	62.96
O7509	7520-02-000-8147	Cancelling Stamp.....	EA	0.94
O7514A	7690-02-000-8831	Label ACDCS Routing, Small.....	RO	3.56
O7514B	7690-02-000-8832	Label ACDCS Routing, Large.....	RO	7.57
O7517	7530-02-000-9741	Labels, CFS II Mechanized Terminal.....	CT	209.47
O7518	7530-02-000-9742	Labels, CFS II Non-Mechanized Terminal.....	CT	121.82
O7550A	7690-02-000-8686	Labels, Keyboard, Electronic Badge Reader, Mail Processing.....	EA	5.41
O7550B	7690-02-000-8687	Labels, Keyboard, Electronic Badge Reader, Functions 0-9 (Except 1).....	EA	4.40
O8100A	8105-02-000-8000	Bag, Delivery Speedy, 20" x 30".....	RO	7.33
O8100B	8105-02-000-8001	Bag, Delivery Speedy, 8½" x 11¾".....	RO	13.45
O8400	8455-02-000-8094	Holder, Badge.....	EA	0.14
O8404	8455-02-000-8187	Clip, Identification Badge.....	EA	0.07
O8405A	8455-02-000-8700	Badge, Temporary Employee.....	EA	0.03
O8405B	8455-02-000-8701	Badge, Visitor.....	EA	0.02
O8405C	8455-02-000-8702	Badge, Contractor.....	EA	0.03
O8406	8455-02-000-8703	Holder, Badge, for Identification PS 5139, PS 5140.....	EA	0.13
O9930	9905-02-000-8199	Label Holder, With Thumb Slit, for Mail Tray.....	EA	0.01

STAMP ANNOUNCEMENT 93-6

Circus Commemorative Stamps



Copyright U.S. Postal Service 1992

The Postal Service commemorates the 200th anniversary of the first circus performance in America with the issuance of a block of four 29-cent commemorative stamps on April 6 in Washington, DC. The stamps, designed by Steve McCracken of Washington, DC, capture the fun and excitement of the circus with a colorful se tenant design—featuring a clown, ringmaster, elephant, and aerialist.

The first circus performance in America was held on April 3, 1793. The show, brought to Philadelphia by John Bill Ricketts, an English circus owner, included equestrian acts, rope walkers, acrobats, and clowns.

FORMAT:

Block of four, sheet of 40

ISSUE DATE:

April 6, 1993

CITY:

Washington, DC

DESIGNER:

Steve McCracken, Washington, DC

ART DIRECTOR:

Phil Jordan

TYPOGRAPHER:

John Boyd

PROJECT MANAGER:

Terry McCaffrey, Program Manager, Stamp Design, USPS

MANUFACTURING PROCESS:

Offset, Ashton Potter America

COLORS:

Yellow, magenta, cyan, and black and special blue

SIZE:

1.225 x 1.560 in/31.1 x 39.6 mm (image area)

1.225 x 1.560 in/31.1 x 39.6 mm (overall)

10.24 x 9.10 in/260.1 x 231.1 mm (full pane)

PLATE NUMBERS:

P1, P2, P3

MARGINAL MARKINGS:

©U.S. Postal Service 1992

Use Correct ZIP Code®

Plate six-position diagram

How to Order First Day of Issue Postmark

Customers have 30 days to obtain the first day of issue postmark by mail. The easiest way is to purchase the new stamps at the local post office, affix the stamps to envelopes of choice, address the envelopes (to one's self or others), insert a card of postcard thickness, tuck in the flap, and place the envelopes in a larger envelope addressed to:

CUSTOMER AFFIXED ENVELOPES
CIRCUS STAMPS
POSTMASTER
WASHINGTON DC 20066-9991.

After applying the first day of issue postmark, the Postal Service returns the envelopes through the mail. There is no charge for the postmark. All orders must be postmarked by May 6.

Customers who wish the Postal Service to affix stamps (to a maximum of 50 envelopes) should send self-addressed envelopes and \$1.16 for a block of four stamps or 29 cents for a random, single stamp, in check or money order, to:

CIRCUS STAMPS
POSTMASTER
WASHINGTON DC 20066-9992.

—Marketing and Sales, 3-18-93

MARCH 1993

Have you seen any of these children?

Participate in the NALC/USPS Child Alert Program, tear out this page and carry it with you. If you have information on any of these missing children, tell your postal supervisor.



Ian Michael Arnoldy
Born: 09-25-88
Date Missing: 07-28-92
From: Satellite Beach, FL



Caroline Patricia Arnoldy
Born: 03-02-87
Date Missing: 07-28-92
From: Satellite Beach, FL



Francis Marie Carranza
Born: 07-02-88
Date Missing: 10-04-91
From: Los Angeles, CA



Berenice Espinoza
Born: 08-11-77
Date Missing: 07-11-92
From: El Monte, CA



Michelle Anne Farley
Born: 08-02-76
Date Missing: 04-09-92
From: Huntington Beach, CA



Lekeasha Egypt Gordon
Born: 12-30-81
Date Missing: 09-20-92
From: Aurora, CO

**Please Call the National Center for Missing and Exploited Children—
HOT LINE 1-800-843-5678
TDD 1-800-843-5678**

Missing Children Poster Display Instructions

Please display this poster prominently on bulletin boards in retail lobbies of main post offices, classified stations and branches. Please remove and discard previous versions. At their option, operators of contract postal units may display this poster.

Companion posters, authorized for display on bulletin boards maintained by employee organizations, appear periodically in The Postal Record, a publication for members of the National Association of Letter Carriers.

This poster is published in cooperation with the National Center for Missing and Exploited Children, the United States Department of Justice, and the National Association of Letter Carriers. Information appearing on this poster is selected solely by the National Center for Missing and Exploited Children. For policy and information on Postal Service support in efforts to recover missing children, see POSTAL BULLETIN 21536, page 1, October 17, 1985.

Missing Children Posters are available from the U.S. Postal Service only through periodic issues of the POSTAL BULLETIN.



ATTENTION

MONEY ORDER CUSTOMERS

Effective August 13, 1990, Department of Treasury regulations require customer identification information for same-day multiple money order transactions between \$3,000 and \$10,000 inclusive.

PLEASE POST IMMEDIATELY

DMM REVISION

Delivery Point Barcodes Required to Obtain Letter-Size Barcoded Rates

Effective March 21, 1993, only mailpieces prepared with delivery point barcodes will qualify for letter-size Barcoded rates. This change does not affect mailings prepared for flat-size Barcoded rates nor does it affect business reply mail (which may not bear a delivery point barcode) or courtesy reply mail. The implementing *Domestic Mail Manual* (DMM) changes appear below and include the following mail sortation rules affecting both ZIP + 4 rate and letter-size Barcoded rate mailings.

Letter-Size Barcoded Rate Mailings

- Pieces bearing a delivery point barcode will qualify for Barcoded rates if all other applicable requirements of DMM Chapter 5 are met.

- Pieces bearing a ZIP + 4 barcode in the lower right corner may be included in a Barcoded rate mailing that is prepared with barcodes in the lower right, up to the 15 percent allowance for nondelivery point barcoded pieces in DMM 515.3. However, since ZIP + 4 barcodes in the lower right impede the Postal Service's ability to spray delivery point barcodes on mail using MLOCs or remote barcoding systems (RBCs), barcodes in the lower right are discouraged.

- Pieces in Barcoded rate mailings may bear a ZIP + 4 barcode in the address block provided there is a barcode clear zone in the lower right. Pieces bearing only a ZIP + 4 barcode will not qualify for Barcoded rates. Pieces that are ZIP + 4 barcoded in the address block may qualify for a numeric ZIP + 4 rate if they include a correct numeric ZIP + 4 code in the address that has been obtained using CASS certified software in accordance with DMM 530 and meet the OCR readability and barcode clear zone requirements in DMM 540.

- Pieces in a Barcoded rate mailing that have the numeric equivalent of the delivery point barcode in the last line of the address, and no barcode, may be eligible for numeric ZIP + 4 rates if the delivery point barcode numeric equivalent was obtained using CASS certified software in accordance with DMM 530 and the pieces meet the OCR readability and barcode clear zone requirements in DMM 540.

- Pieces bearing five-digit barcodes may continue to appear in Barcoded rate mailings within the 15 percent limit in 515.3 under the current provisions of DMM 515.12.

ZIP + 4 Rate Mailings

- A delivery point barcode in either the address block or the lower right corner will satisfy the requirement for a numeric ZIP + 4 code. Delivery point barcoded pieces need not meet the OCR readability or barcode clear zone requirements in DMM 540 to qualify for ZIP + 4 rates.

- Pieces bearing a ZIP + 4 barcode in the lower right corner must not be included in any ZIP + 4 rate mailing.

- Pieces bearing a ZIP + 4 barcode in the address block may be included in a ZIP + 4 rate mailing provided the mailpiece meets the OCR readability and barcode clear zone requirements in DMM 540. OCR readability requirements have been modified to indicate that an OCR readable piece may include a ZIP + 4 barcode below the address in the address block. However, the ZIP + 4 barcode does not satisfy the requirement for a numeric ZIP + 4 code. Therefore, to qualify for ZIP + 4 rates, such pieces must also bear in the address a numeric ZIP + 4 code that has been obtained using a CASS certified matching process under DMM 530.

- Pieces bearing five-digit barcodes may continue to appear in ZIP + 4 rate mailings prepared with barcodes within the 15 percent limit in 514.3 under the current provisions of DMM 514.13.

The DMM revisions effective March 21, 1993, follow.

Chapter 3 First-Class Mail

Make the following changes to *Domestic Mail Manual* (DMM) Chapter 3:

312 Nonpresorted Bulk Rates

* * * * *

312.2 Nonpresorted Barcoded Rate

312.21 Cards

312.211 Rate Application. The nonpresorted Barcoded rate in 312.212 applies to cards meeting the requirements in 311.11 and 322 bearing delivery point barcodes in mailings meeting the requirements in 513 and 515.

* * * * *

313.7 3-Digit Barcoded Rates

313.71 Rate Application. The 3-digit Barcoded rates in 313.72 apply to cards and letter-size pieces bearing delivery point barcodes in mailings meeting the requirements in 513 and 515.

* * * * *

313.8 5-Digit Barcoded Rates

313.81 Rate Application. The 5-digit Barcoded rates in 313.82 apply to cards and letter-size pieces bearing delivery point barcodes in mailings meeting the requirements in 513 and 515.

* * * * *

325 Presorted Barcoded Rate First-Class Mail

325.1 Letter-Size Mailings. Presorted letter-size Barcoded rate mailings must meet the requirements in 513 and 515, including presort under 564, 565, or 566. The

Delivery Point Barcodes Required to Obtain Letter-Size Barcoded Rates—Continued

rate eligibility criteria for letter-size mailings presorted under 564, 565, or 566 are in 564.1, 565.21, and 566.21.

(Delete current 325.2.)

325.2 Flat-Size Mailings. *(Insert current 325.12.)*
(Delete current 325.3.)

* * * *

Chapter 4 Second Class Mail

Make the following changes to DMM Chapter 4:

411.126 Barcoded Rates. *(Change title to Barcoded Rates. In the first sentence, delete ZIP + 4 Barcoded and ZIP + 4 barcode.)*

* * * *

424.84 Documentation

* * * *

424.843 Description. *(Change the third sentence to read: Further, for mailings at a ZIP + 4 or Barcoded rate, each entry must detail the number of pieces bearing a ZIP + 4 code or delivery point barcode, as appropriate, and a summary for the entire mailing must show a total number of pieces in the mailing and the number and percentage that bear a ZIP + 4 code or delivery point barcode, as applicable, for the rate claimed.)*

* * * *

Chapter 5 Automation-Compatible Mail

Change DMM 514.1 to read as follows:

514 Requirements for ZIP + 4 Rate Mailings (Letter-Size Pieces Only)

514.1 Rate Eligibility

514.11 General. Only mailpieces containing a correct ZIP + 4 code in the address and otherwise meeting the eligibility requirements of 514 can qualify for ZIP + 4 rates. Other pieces can qualify for presort rates and, if First-Class, single-piece rates. Eligibility for specific rates differs based on the class of mail and the presort option used. Specific rate eligibility for ZIP + 4 rate mailings presorted under 562.1 or 563 is in 562.11, and 563.1. Specific rate eligibility for nonpresorted First-Class mailings prepared under 569.1 is in 569.11.

514.12 Pieces Prepared With Delivery Point Barcodes. Mailers may claim mailpieces prepared with correct delivery point barcodes at ZIP + 4 rates and may count such pieces toward the 85 percent requirement in 514.3. In barcoded mailings, pieces prepared with delivery point barcodes need not meet the OCR readability requirements in 540 or bear a numeric ZIP + 4 code in the address to qualify for the ZIP + 4 rates. The delivery point barcodes must be prepared under 530 and 551. See 514.3 and 514.52 for additional specifications for such pieces.

514.13 Pieces Prepared With ZIP + 4 Barcodes. ZIP + 4 rate mailings may include pieces prepared with ZIP + 4 barcodes under the following conditions:

a. All pieces bearing ZIP + 4 barcodes must meet the requirements of 520, 530, 540, and 551, and are subject to the limits in 514.3.

b. ZIP + 4 barcodes may appear only in the address block as specified in 551.24. ZIP + 4 barcodes are not permitted in the lower right barcode clear zone.

c. Pieces that bear a ZIP + 4 barcode in the address block may qualify for ZIP + 4 rates and may be counted toward the 85 percent requirement in 514.3 only if they bear a correct numeric ZIP + 4 code in the address. ZIP + 4 barcoded pieces that do not bear a numeric ZIP + 4 code in the address do not qualify for ZIP + 4 rates and do not count towards the 85 percent requirement in 514.3.

514.14 Pieces Prepared With 5-Digit Barcodes. ZIP + 4 rate mailings prepared with delivery point barcodes may include pieces with correct 5-digit barcodes under the following conditions:

a. All pieces bearing a 5-digit barcode must meet the requirements of 520, 530, 540, 552, and are subject to the limits in 514.3.

b. When correct 5-digit barcodes are printed directly on mailpieces, the pieces may qualify for ZIP + 4 rates and may be counted toward the 85 percent requirement in 514.3 if they also bear a correct numeric ZIP + 4 code (see 530).

c. When 5-digit barcodes are printed on inserts that appear through a barcode window located in the lower right barcode clear zone, the pieces do not qualify for any automation-based rate and may not be counted toward the 85 percent requirement in 514.3 even if they bear a correct numeric ZIP + 4 code in the address.

514.15 Pieces Prepared With Blank Barcode Windows in Lower Right Barcode Clear Zone. Pieces prepared with barcode windows in the lower right barcode clear zone through which no barcode appears are not eligible for any automation-based rate, and may not be counted toward the 85 percent requirement in 514.3 even if they bear a correct numeric ZIP + 4 code in the address.

Make the following revisions to the remainder of 514:

514.32 Barcoded Pieces. The correct delivery point barcode prepared as required by 530 and 550 satisfies the requirement for a correct ZIP + 4 code for rate qualification and meeting the 85 percent requirement in 514.31. A ZIP + 4 barcode does not satisfy the requirement for a numeric ZIP + 4 code. Therefore, ZIP + 4 barcoded pieces will count towards the 85 percent requirement in 514.31 and qualify for ZIP + 4 rates only if the address

Delivery Point Barcodes Required to Obtain Letter-Size Barcoded Rates—Continued

bears a numeric ZIP + 4 code and the piece meets the requirements of 540.

514.4 Addresses. The address on each piece in the mailing must include either the correct numeric ZIP + 4 code or the correct numeric 5-digit ZIP Code. The addresses on pieces in mailings prepared with delivery point barcodes may bear the numeric equivalent to the delivery point barcode as provided in 517. Each piece in the mailing that bears a ZIP + 4 code or a delivery point barcode, must bear an accurate address as specified in 534. The mailing must meet all requirements in 530 (see also 514.52).

514.5 Mailpiece Characteristics

514.51 Physical Requirements. *(In current 515.51, delete the phrase ZIP + 4 barcoded or.)*

514.52 OCR Processing. Each piece in the mailing, except those pieces in mailings prepared with correct delivery point barcodes (see 530) must meet the requirements of 540, including the requirement that the address be printed in a standardized addressing format (see 541). Pieces in mailings prepared with delivery point barcodes must meet the requirements of 550.

Change DMM 515.1 to read as follows:

515 Requirements for Letter-Size Barcoded Rate Mailings

515.1 Rate Eligibility

514.11 General. Only mailpieces bearing a correct delivery point barcode and otherwise meeting the eligibility requirements of 515 can qualify for barcoded rates. Other pieces can qualify for ZIP + 4 rates or presort rates, and if First-Class, single piece rates. Eligibility for specific rates differs based on the class of mail and the presort option used. Specific rate eligibility criteria for barcoded mailings presorted under 564.1, 565, or 566 are in 564.11; 565.2, and 566.2. Specific rate eligibility criteria for First-Class nonpresorted Barcoded rate mailings prepared under 569.2 are in 569.21.

515.12 Pieces Prepared With ZIP + 4 Barcodes. Pieces with correct ZIP + 4 barcodes may be included in the mailing under the following conditions:

a. All pieces bearing a ZIP + 4 barcode must meet the requirements of 520, 530, 551, and are subject to the limits in 515.3.

b. In mailings prepared with barcodes in the lower right corner, pieces bearing ZIP + 4 barcodes in the lower right corner are permitted. However, because they cause subsequent processing problems, ZIP + 4 barcodes in the lower right corner are discouraged.

c. Pieces with ZIP + 4 barcodes printed in the lower right corner do not qualify for any automation-based rate.

d. Mailpieces bearing a ZIP + 4 barcode in the address block must contain a barcode clear zone in the lower right under 551.22 and 551.412.

e. When ZIP + 4 barcodes are printed in the address block, the pieces may qualify for ZIP + 4 rates if they bear a correct numeric ZIP + 4 code and meet the requirements of 540.

515.13 Pieces Prepared With 5-Digit Barcodes. Pieces with correct 5-digit barcodes may be included in the mailing under the following conditions:

a. All pieces bearing a 5-digit barcode must meet the requirements of 520, 530, and 552, and are subject to the restrictions in 515.3.

b. Pieces bearing only a 5-digit barcode do not qualify for the Barcoded rates.

c. When correct 5-digit barcodes are printed directly on mailpieces the pieces may qualify for ZIP + 4 rates if they also bear a correct numeric ZIP + 4 code (see 530), and meet the requirements of 540.

d. When 5-digit barcodes are printed on inserts that appear through a barcode window located in the lower right barcode clear zone the pieces do not qualify for any automation-based rate.

515.14 Pieces Prepared With Blank Barcode Windows Located in the Lower Right Barcode Clear Zone. Pieces prepared with barcode windows in the lower right barcode clear zone through which no barcode appears do not qualify for any automation-based rate.

Make the following additional changes to DMM Chapter 5:

515.3 Required Percentage of Delivery Point Barcoded Pieces. *(Delete ZIP + 4 Barcoded from title.)*

515.31 Eighty-Five Percent Delivery Point Barcoded Pieces for Entire Mailing. *(In current 515.31, add Delivery Point to the title. Delete the phrase ZIP + 4 barcode or. Change the phrase ZIP + 4 Barcoded to barcoded and change the phrase certified ZIP + 4 or to certified.)*

515.32 One Hundred Percent Delivery Point Barcoded Pieces for 5-Digit Portion of Mailing. *(In current 515.32, delete the reference to 567, and delete the phrase correct ZIP + 4 barcode or.)*

(Delete 515.33)

515.4 Addresses. *(In current 515.4, delete the phrase ZIP + 4 barcode.)*

515.5 Letter-Size Mailpiece Characteristics

515.512 Nonpresorted Barcoded Rates (First-Class Only). *(In current 515.512 delete ZIP + 4 from the title.)*

Delivery Point Barcodes Required to Obtain Letter-Size Barcoded Rates—Continued

515.53 Rate Marking. (In current 515.53, change the rate markings ZIP + 4 Barcoded to Barcoded. Change all other references to ZIP + 4 Barcoded to Barcoded.)

515.6 Presort and Documentation. (In current 515.6, change all phrases ZIP + 4 Barcoded to Barcoded.)

517 Delivery Point Barcode

(Delete 517.1 and renumber 517.2 and 517.3 accordingly.)

517.1 Description. (In renumbered 517.1 (formerly 517.2) delete the third sentence. Delete in addition from the fourth sentence.)

531 Coding Accuracy Support System (CASS Certification)

531.113 Delivery Point Barcoding

a. Letter-Size Mailings. The use of a delivery point barcode to obtain letter-size barcoded rates is mandatory. All mailings claimed at letter-size barcoded rates must be prepared using mailing lists processed with address matching software that is CASS-certified for delivery point coding (DPC) capability. The two-digit add-on logic must use the primary street number field from the CASS-certified ZIP + 4 address matching process.

b. Flat-Size Mailings. The use of a delivery point barcode instead of a ZIP + 4 barcode on mailpieces to obtain the flat-size barcoded rates is optional. However, both ZIP + 4 barcodes and delivery point barcodes must be obtained from CASS certified DPC address matching software.

Exception: Address lists coded with ZIP + 4 address matching software CASS certified before the fall 1992 CASS certification cycle may continue to be used to prepare flat-size barcoded mailings within the time constraints allowed under 531.15.

531.14 Use of Current Information. (In current 531.14, change the phrase When used for ZIP + 4 coding or ZIP + 4 barcoding to When used for ZIP + 4 coding, ZIP + 4 barcoding, or delivery point barcoding.)

534 Accurate Addressing

534.1 Basic Requirement. (In current 534.1, replace the second sentence with the following: Standardization of addresses is not required for mail in barcoded rate mailings. Within letter-size ZIP + 4 rate mailings, pieces qualifying for ZIP + 4 rates must bear addresses prepared in a standardized addressing format as shown in

Exhibit 122.33, except for pieces in ZIP + 4 rate mailings prepared with delivery point barcodes (see 514.12 and 514.52). In the last sentence, revise ZIP + 4 Barcoded rate to read Barcoded rate.)

534.2 Depth of Code Quality

534.244 Information Not Available. (In current 534.244, change the phrase or ZIP + 4 barcode to ZIP + 4 barcode, or delivery point barcode.)

540 Nondelivery Point Barcoded Pieces Qualifying for ZIP + 4 Rates.

541 General

541.1 Applicability. (In current 541.1, delete the phrase ZIP + 4 barcode or.)

541.2 Address Content and Standardized Address Format. (In the second sentence of 541.2, revise the phrase non-ZIP + 4 barcoded to nondelivery point barcoded.)

542 OCR Readability

542.3 Limits for Nonaddress Printing in OCR Read Area

542.31 Nonaddress Printing or Markings. (Revise the first sentence to read as follows: There must be no markings, printing (except for a 5-digit, ZIP + 4, or delivery point barcode prepared under 551.24 or 552.31), or die cuts (except for the edges of address windows prepared in accordance with 543) in the OCR read area defined in 542.1 on either side of, or below, any of the delivery address lines.)

545 Barcode Clear Zone

545.4 What May Appear in Barcode Clear Zone. Except for a delivery point barcode or 5-digit barcode prepared under 550, no printing, markings, tabs, or wafer seals may appear in the barcode clear zone unless meeting the requirements of 551.4. ZIP + 4 barcodes must not appear in the barcode clear zone.

546 Acceptance of USPS Water-Based Barcode Ink

546.1 General (In current 546.1, change the phrase to print a ZIP + 4 barcode to to print a delivery point barcode.)

Delivery Point Barcodes Required to Obtain Letter-Size Barcoded Rates—Continued

551 ZIP + 4 or Delivery Point Barcode

* * * * *

551.2 Location

551.21 General

551.211 Cards and Letter-Size Mail. (Add the following to the end of this section: Pieces bearing ZIP + 4 barcodes in the lower right barcode read area do not qualify for any automation-based rates.)

551.22 Barcode Clear Zone (Lower Right Corner)—Letter-Size Mail

* * * * *

551.222 What May Appear in Barcode Clear Zone. Except for a delivery point barcode, 5-digit barcode, and under limited circumstances, a ZIP + 4 barcode, properly prepared under 550, no printing, markings, tabs, or wafer seals may appear in the barcode clear zone unless meeting the requirements of 551.4 In letter-size mailings, ZIP + 4 barcodes may appear in the lower right barcode clear zone only in Barcoded rate mailings prepared with barcodes in the lower right corner, subject to the 15 percent limit in 515.3. Letter-size pieces prepared with ZIP + 4 barcodes in the lower right barcode clear zone do not qualify for any automation-based rates. ZIP + 4 barcodes must not appear in the lower right barcode clear zone in letter-size Barcoded rate mailings prepared with address block barcodes, nor in ZIP + 4 rate mailings.

* * * * *

551.23 Barcode Placement on Letter-Size Mail (Lower Right Corner)

551.231 Printed Directly on Mailpieces. (Add the following to the end of this section: **Note:** Pieces bearing ZIP + 4 barcodes in the lower right corner do not qualify for any automation-based rates.)

551.232 Printed on Inserts. (Add the following to the end of this section: **Note:** Pieces bearing ZIP + 4 barcodes in the lower right corner do not qualify for any automation-based rates.)

* * * * *

551.4 Reflectance

551.41 Background Reflectance

551.412 Pieces Barcoded in Address Block

* * * * *

b. Pieces Not Bearing Delivery Point Barcode. (Revise the first sentence to read as follows: All pieces in letter-size barcoded rate mailings that do not bear a delivery point barcode must contain a barcode clear zone in the

lower right corner as specified in 551.22 that meets the requirements of 551.411a.)

* * * * *

551.44 Dark Fibers and Background Patterns

* * * * *

551.442 Pieces Not Bearing ZIP + 4 or Delivery Point Barcode. (Revise the first sentence to read as follows: All pieces in a letter-size barcoded rate mailing that do not bear a delivery point barcode must contain a barcode clear zone in the lower right corner as specified in 551.22 that meets the requirements of 551.441.)

* * * * *

551.7 Barcodes on Inserts Appearing Through Windows in Lower Right Clear Zone (Letter-Size Pieces Only)

* * * * *

551.73 Delivery Point Barcode Location

* * * * *

551.732 Clear Space—Barcode in Lower Right Corner. (Add the following as the last sentence: In letter-size barcoded rate mailings prepared with address block barcodes, and in ZIP + 4 rate mailings, only delivery point barcodes (or 5-digit barcodes prepared under 552) may be printed on an insert appearing through a window in the lower right barcode clear zone.)

551.8 Barcodes on Inserts Appearing Through Windows in Address Block. (Insert current 551.733. Add the following as the last sentence: If windows are covered they must meet the requirements of 551.723.)

* * * * *

552 Five-Digit Barcodes

552.1 General. (Revise the first sentence to read as follows: Pieces in barcoded rate mailings may contain 5-digit barcodes, provided at least 85 percent of the pieces in a letter-size mailing contain a delivery point barcode (see 515.3), or in flat-size mailings, provided at least 85 percent of the pieces bear a ZIP + 4 barcode or delivery point barcode (see 516.3).)

* * * * *

Chapter 6 Third-Class Mail

Make the following changes to DMM Chapter 6.

628 Additional Conditions for Automation-Based Bulk Third-Class Rates

* * * * *

628.2 Eligibility Requirements for Barcoded Rate Mail

Delivery Point Barcodes Required to Obtain Letter-Size Barcoded Rates—Continued

628.21 Mailings of Letter-Size Pieces. Barcoded rate mailings must meet the requirements in 513 and 515. The rate eligibility criteria for mailings presorted under 564, 565, or 566 are in 564.13, 565.23, and 566.23.

(Delete current 628.3.)

Miscellaneous Conforming Changes

In the following sections change ZIP + 4 barcode or ZIP + 4 barcodes to delivery point barcode: 424.843, 534.232, and 568.

In the following sections change nonpresorted ZIP + 4 barcoded to nonpresorted barcoded: 312.212, 382.231, 382.335, 515.512, 515.531b, 569.2, 577, and 581.

In the following sections change nonpresorted ZIP + 4 barcoded to nonpresorted barcoded: 145.742, 382.335, 515.612, 569, and 581.

In the following sections change ZIP + 4 barcoded to barcoded: 122.16F, 143.131, 144.492, 144.513, 145.742, 328, 328.1, 361.61, 362.6, 372, 372.2, 374.11d, 374.12, 374.21, 382, 382.33, 382.422, 382.5, 382.6, 411.146, 411.23, 424.823, 424.842, 424.843, 424.912, 511, 513, 513.22, 513.3, 513.41, 513.43, 513.5, 515.2, 515.21,

515.22, 515.23, 521.111, 532.1, 564, 565, 566, 568, 569.2, 576.4, 581, 581.5, 582, 583, 583.4, Exhibit 611.2a, 628.2, 629.66, 647.3, and 661.4.

In the following sections delete ZIP + 4 barcodes or, or ZIP + 4 barcode or: 361.6, 411.126, and 569.2.

In the following sections delete ZIP + 4 barcoded or: 561.272, 564, 565, 566, and 569.2.

In the following sections change 5-Digit ZIP + 4 Barcoded rate to 5-Digit Barcoded rate: 313.81, 313.821, 341, and 382.231.

In the following sections change ZIP + 4 Barcoded rates or ZIP + 4 Barcoded rate to Barcoded Rate: 315.14, 382.315, 382.33, 382.41, 411.126, 521.112, 521.132, 521.141, 521.142, 531.112, 531.131, 531.14, 532.1, 534.1, 541.2, 561.271, 564, 566, and 568.

In the following sections change 3-Digit ZIP + 4 Barcoded rate to 3-Digit Barcoded rate: 313.7, 313.71, 313.721, 325.23a, 341, and 382.231.

DOCUMENTATION. In exhibits 564.144b(1), 564.144b(2), 565.53a, 565.53b, 566.63, 567.624a, 567.24b, 567.634c, 574.332(1), and 574.332(2), change 5-Digit ZIP + 4 Barcoded rate and 3-Digit ZIP + 4 Barcode rate to 5-Digit Barcoded rate and 3-Digit Barcoded rate.

—Customer Service Support, 3-18-93

Withholding of Mail Orders

Enforced by postmasters at cities listed.

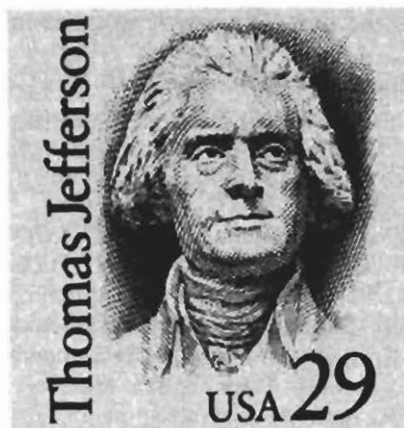
State/city	Names covered
AZ, Glendale 85301-5401.	Any and All Names, including, but not limited to: Louis Lourdes, Demetris C. Alan, Gilbert T. Venable, Barbara Green, Arlene L. DeFillipo, James B. Zimmerman, 4397 W. Bethany Home Rd., Box 1057.
AZ, Phoenix 85023-3884.	Any and All Names, including, but not limited to: Sally Chatfield, Sally Johnson, James B. Zimmerman, Battles, Washington, 3434 W. Greenway, Box 226.
AZ, Phoenix 85023-5900.	Any and All Names, including, but not limited to: Mallie Kingston, Robert J. Kingston, Marsha Kingston, James Kingston, Sally Chatfield, 2510 W. Thunderbird Rd., Box 307.
AZ, Phoenix 85023-5641.	All Names Other Than: Toni Helene Elich, 3431 W. Thunderbird Rd., Box 171.
AZ, Phoenix 85023-5641.	Any Names Other Than: Savanhildur Jones, Savanhildur Mohler, Asta Dawn Mohler, Thomas J. Jones, 3431 W. Thunderbird Rd., Box 153.
AZ, Phoenix 85015-3347.	Any and All Names, including, but not limited to: Carolyn E. Stine, 1702 W. Camelback, Box 101.
AZ, Glendale 85302-7000.	Any and All Names, including, but not limited to: Sally C. Rollins, Todd Rollins, Chatfield, M. Bigger, Carlos Robertson, J. Mix, 6611 West Peoria, Box 131.
AZ, Glendale 85302-7000.	Any and All Names, including, but not limited to: Annie Duddy, Anne Duppy, MTB—Duddy, 6611 West Peoria, Box 152.

State/city	Names covered
CA, Placentia 92670-1747.	Tony Smith and Any and All Other Names, 1160 E. Imperial Highway, Ste. 105.
CA, Los Angeles 90076-6035.	Promotional Express, 7095 Hollywood Blvd., Suite 735.
CA, Santa Ana 92704-7245.	David N. Kauth and Any and All Other Names, 3337 South Bristol #63.
CA, Riverside 92507-3940.	David N. Kauth and Any and All Other Names, 767A Blaine, #187.
CA, Corona 91719-1291.	Mark Pate and Any and All Other Names, 420 McKinley Avenue, Box 403.
NC, Charlotte 28206-1411.	Any and All Various Names Other Than The Surnames Summers, Boulware and Heath, 2326 Horne Drive #B.
OH, Proctorville 45669-0280.	Any and All Various Names Other Than The Surname Dement, P.O. Box 280.
VA, Newport News 23607-0816.	Any and All Various Names Other Than The Surname Stewart, P.O. Box 816.
VA, Chesapeake 23325-3561.	Any and All Various Names Other Than The Surname Stewart, P.O. Box 13561.
VA, Norfolk 23518-4475.	Any and All Various Names Other Than The Surname Stewart, P.O. Box 14475.
VA, Virginia Beach 23464-3441.	Any and All Various Names Other Than The Surname Stewart, 6651 E. Indian River Road #131.
VA, Virginia Beach 23462-2700.	Any and All Various Names Other Than The Surname Stewart, 309 Aragona Blvd., Suite 102-523.

—Judicial Officer, 3-18-93

STAMP ANNOUNCEMENT 93-7

Thomas Jefferson Stamp



Copyright U.S. Postal Service 1993

The U.S. Postal Service honors Thomas Jefferson with the issuance of a 29-cent definitive stamp on April 13 in Charlottesville, Virginia. Jefferson was the third president of the United States and principal author of the Declaration of Independence. The issue date marks the 250th anniversary of Jefferson's birth.

Several postage stamps throughout the years featured Jefferson, who made his first appearance over 140 years ago. This stamp, designed by Chris Calle, Ridgefield, Connecticut, is a part of the popular Great Americans Series.

Thomas Jefferson was born on April 13, 1743, at Shadwell in Albemarle County, Virginia. He began his 40-year political career in 1769, advancing from county positions to Virginia's House of Burgesses. After the dissolution of that body in 1775, Jefferson was a delegate to the Continental Congress and later charged to draft the Declaration of Independence. His draft, with a few changes, became the text adopted on July 4, 1776.

Jefferson served as the third president of the United States from 1801-1809. As president, his major achievement was the Louisiana Purchase in 1803—a land acquisition that nearly doubled the size of the United States. In 1809, after completing his second term, he retired to Monticello and focused his attention on establishing the University of Virginia.

Jefferson died on July 4, 1826—50 years after the signing of the Declaration of Independence.

FORMAT:

Pane of 100

ISSUE DATE:

April 13, 1993

CITY:

Charlottesville, VA

DESIGNER:

Chris Calle, Ridgefield, CT

ENGRAVER:

Yves Baril

ART DIRECTOR:

Jack Williams, Stamp Design, USPS

TYPOGRAPHER:

John Boyd

PROJECT MANAGER:

Joe Brockert, Stamp Design, USPS

MODELER:

Richard Sennett, Stamp Venturers

MANUFACTURING PROCESS:

Intaglio, Stamp Venturers

COLORS:

PMS 276

SIZE:

0.71 x 0.82 in/18.0 x 20.8 mm (image area)

0.84 x 0.99 in/21.3 x 25.1 mm (overall)

9.1 x 10.24 in/231.1 x 260.1 mm (full pane)

PLATE NUMBERS:

S1

MARGINAL MARKINGS:

©U.S. Postal Service 1993

Use Correct ZIP Code®

How to Order First Day of Issue Postmark

Customers have 30 days to obtain the first day of issue postmark by mail. The easiest way is to purchase the new stamps at the local post office, affix the stamps to envelopes of choice, address the envelopes (to one's self or others), insert a card of postcard thickness, tuck in the flap, and place the envelopes in a larger envelope addressed to:

CUSTOMER AFFIXED ENVELOPES
THOMAS JEFFERSON STAMP
POSTMASTER
CHARLOTTESVILLE VA 22906-9991.

After applying the first day of issue postmark, the Postal Service returns the envelopes through the mail. There is no charge for the postmark. All orders must be postmarked by May 13.

Customers who wish the Postal Service to affix stamps (to a maximum of 50 envelopes) should send self-addressed envelopes and 29 cents per stamp, in check or money order, to:

THOMAS JEFFERSON STAMP
POSTMASTER
CHARLOTTESVILLE VA 22906-9992.

—Marketing and Sales, 3-18-93

Directives and Forms Update

This update shows all new, revised, and obsolete directives and forms activity since *Postal Bulletin*, 21831, December 24, 1992, and supplements Publication 223, *Directives and Forms Catalog*, dated August 1992.

ORDERING INSTRUCTIONS. Ordering instructions are in subchapter 130 of Publication 223, and supply source codes are in section 122.8. This update indicates whether a new directive or form rescinds another, provides the oldest usable dates for revised forms, and states if and by what obsolete directives and forms are replaced. The "HQO" code used in Publication 223, meaning the directive or form is available from the Headquarters originator, is not used in this list; instead, the originator's phone number is provided. Directives and forms showing the USPS supply source as "XMD" are available from both materiel distribution centers (MDCs). Telephone numbers for supply sources are:

SOMERVILLE MDC: 908-707-4212, 4214, 4215

TOPEKA MDC: 913-267-8715

ORIGINATOR: (Phone numbers shown in source columns)

SUPERINTENDENT OF DOCUMENTS: 202-783-3238

CODE DEFINITIONS. BMC-Bulk Mail Center; CFS-Computer Forwarding Sites; GAO-General Accounting Office; GSA-General Services Administration; HQS-Headquarters Supply Room; ICO-International Claims & Inquiry Office; ITSC-Information Resource Telecommunications Support Center; LOC-Reproduce locally; N/A-Not available; PDC-Postal Data Centers; PO-Local post office; P/F-Free to public at main post offices; R-Restricted; SD-Superintendent of Documents; SEA-Stamped Envelope Agency; SMD-Somerville Materiel Distribution Center; TMD-Topeka Materiel Distribution Center; XMD-Both Materiel Distribution Centers.

NEW DIRECTIVES

Document ID	Date	Title	USPS Source	Public Source
LAB 234	08-00-92	Return Parcel to Addressee	XMD	N/A
NOT 280-B	10-00-92	Rent-A-Box for as Little as \$3.25 Per Month	XMD	P/F
NOT 280-C	10-00-92	Rent-A-Box for Less Than \$3 a Month	XMD	P/F
NOT 280-D	10-00-92	Rent-A-Box for Less Than \$1 a Month	XMD	P/F
POS 265	07-00-92	Drugs By Mail	XMD	N/A
SGN 139-B	09-00-92	Post Office Banner (for Contract Units)	XMD	N/A

REVISED DIRECTIVES

Document ID	Date	Title	USPS Source	Public Source
HBK F-55	09-19-92	Carrier Cost System: City Carrier Route Test Instructions	XMD	N/A
HBK F-56	09-19-92	Carrier Cost System: Rural Carrier Route Test Instructions	XMD	N/A
HBK PO-502	09-00-92	Container Methods	XMD	(202)268-3309
MAN DMM	12-20-92	Domestic Mail Manual (Issue 45)	XMD	SD
MAN IMM	12-24-92	International Mail Manual (Issue 11)	XMD	SD
NOT 67	08-00-92	Automation Template	XMD	N/A
PUB 20	09-00-92	Priority Mail	XMD	P/F
PUB 122-A	10-00-92	Customer Guide to Filing Inquiries and Claims on International Mail	XMD	P/F

OBSOLETE DIRECTIVES

Document ID	Date	Title	Obsolete Date
HBK S-20	03-16-79	Mailbag Depositories & Repair Centers Operating Procedures (replaced by HBK PO-502, 09-00-92)	09-24-92
MI AS-710-90-4	03-29-90	Contracting for Consultant or Study Services (replaced by MI AS-710-92-3, 02-00-92)	08-31-92
MI AS-710-89-8	07-07-89	Submitting and Approving Requests for Noncompetitive Procurement Actions (replaced by MI AS-710-92-1, 02-00-92)	03-01-93

NEW FORMS

Form Number	Date	Title	Supply Source
PS 582-S	11-00-92	Handwriting Specimen- Spanish Language	XMD
PS 2171-B	09-00-92	Handwriting Specimen- Express Mail Label/ Credit Card	XMD
PS 3651-C	08-00-92	International Statement of Mailing - Value Post/ Canada	XMD
PS 7409-E	09-00-92	Acceptance Notice - Air Taxi Service Emergency Contract Bid or Proposal	XMD
PS 8139	10-00-92	Your Role in Protecting the Security of the United States Mail	XMD
PS 8150	01-00-93	International Mail Loss Report	XMD

Directives and Forms Update—Continued

REVISED FORMS

Form Number	Date	Title	Oldest Usable Date	Supply Source
PS 1099	10-00-92	Notice to Return Keys	03-00-89	XMD
PS 2430	09-00-92	EEO Investigation Report	09-00-92	XMD
PS 2481	12-00-92	Applicant Notice --Strength and Stamina Test	07-00-91	XMD
PS 2565	09-00-92	EEO Complaint of Discrimination in the Postal Service	09-00-92	XMD
PS 2568-A	09-00-92	EEO Investigative Affidavit (Complainant)	09-00-92	XMD
PS 2568-B	09-00-92	EEO Investigative Affidavit (Witness)	09-00-92	XMD
PS 2579-B	09-00-92	Notice of Right to File Class Complaint	09-00-92	XMD
PS 2584	09-00-92	Representation/ Anonymity	09-00-92	XMD
PS 3510	12-00-92	Application for Additional Entry, Reentry, or Special Rate Request for Second-Class Publication	12-00-92	XMD
PS 3602-N	10-00-92	Statement of Mailing with Permit Imprints - Third Class Mail	10-00-92	XMD
PS 3602-PC	10-00-92	Statement of Mailing with Meter or Precanceled Postage Affixed- Bulk Third Class	10-00-92	XMD
PS 3604	10-00-92	Nonuse Revocation of Mailing Permit or Meter License	05-00-89	XMD
PS 3623	09-00-92	Application for Special Bulk Third-Class Rates at Additional Mailing Office	05-00-92	XMD
PS 3635-G	01-00-93	Adjusting Postage & Fees for Official Mail	01-00-93	XMD
PS 3824	11-00-92	Temporary Bulk Receipt	05-00-71	XMD
PS 3972	11-00-92	Absence Analysis	11-00-92	XMD
PS 4242	10-00-92	Zip+4 Code State Directory Order Form for Mail Order Use	10-00-92	XMD
PS 4243	10-00-92	National Five Digit Zip Code and Post Office Directory Order Form for Mail Order Use	10-00-92	XMD
PS 4862	11-00-92	Scale Out of Tolerance	11-00-92	XMD
PS 7451	07-00-92	Air Taxi Contract General Provisions	07-00-92	XMD
PS 7453	09-00-92	Air Taxi Service Aircraft Modification & Operational Data	09-00-92	XMD
PS 8107	10-00-92	Air Parcel Post (CP-20)	05-00-92	XMD
PS 8200	11-00-92	Flexible Spending Account Enrollment Form	11-00-92	XMD
SF 2803	06-00-92	Application to Make Deposit or Redeposit	06-00-92	XMD
SF 2817	09-00-92	Life Insurance Election- Federal Employees' Group Life Insurance Program	02-00-88	XMD

OBSOLETE FORMS

Form Number	Date	Title	Obsolete Date
PS 7	08-00-72	Service Record (not replaced)	01-05-93
PS 188	06-00-83	Checklist for Management List (not replaced)	02-11-93
PS 1483	01-00-86	Accounting Copy - 9500 Form (not replaced)	02-16-93
PS 4311	04-00-82	First Flight Covers Reason for Return (not replaced)	02-12-93
CA 11	10-00-88	When Injured at Work (not replaced)	10-14-92

—Information Systems, 3-18-93

Domestic Orders

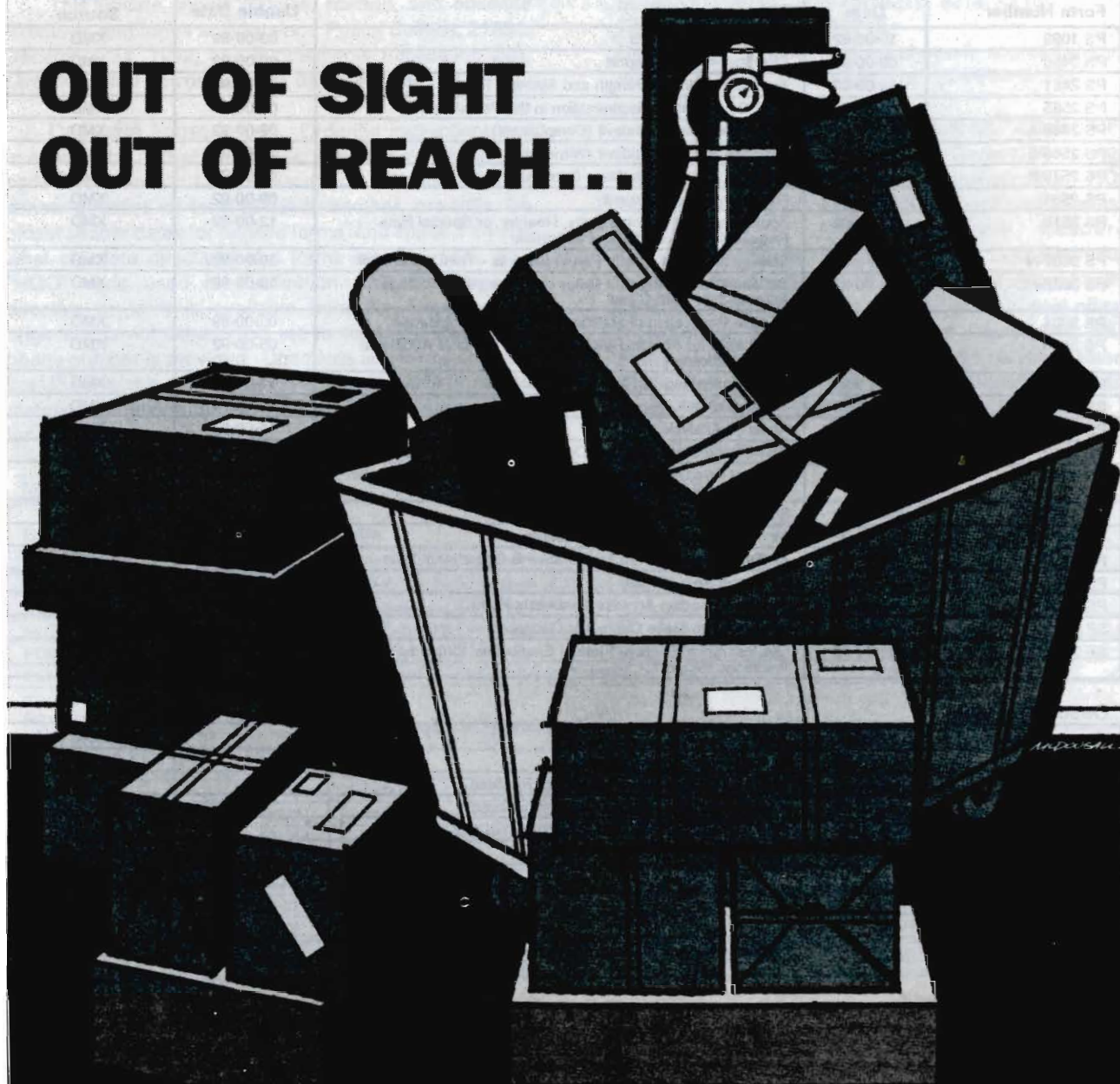
False Representation. Enforced by postmasters at cities listed.

State/City	Names Covered	Product
GA, Duluth 30136-5826	American Homemaker, 1630 Pleasant Hill Road, Suite 180-124.	An envelope stuffing scheme.
GA, Tucker 30084-1716	Interplay, 6425 Lawrenceville Hwy., Suite 1-112.....	An envelope stuffing scheme.

—Judicial Officer, 3-18-93

ZIP Code Speeds and Simplifies Mail Handling.
ZIP Code your mail.

**OUT OF SIGHT
OUT OF REACH...**



Do not block fire extinguishers.





Money Order Transaction Report

Effective August 13, 1990, Department of Treasury regulations require customer identification for same day money order transactions between \$3,000 and \$10,000.

I. Completed by Customer

Name (Last, First, MI)		Date of Birth	Driver's License No. & State of Issue
Social Security Number	Alien ID Number		Military ID & Branch of Service
Address (Number, Street, Box, Suite/Apt. No., City, State, ZIP + 4)		Type of Photo ID	Passport No. & Country of Issue
			Other ID No. (Describe fully in space at bottom of form)

II. Completed by Customer or Agent

Are you completing this transaction for another person? ☐ Yes ☐ No **If you answered "Yes", complete this section**

Individual's Name (Last, First, MI)	Social Security Number	Alien ID Number
Organization's Name	Organization's Taxpayer ID Number (EIN)	
Address of Individual or Organization (Number, Street, Box, Suite/Apt. No., City, State, ZIP + 4)		

III. Purchaser's Signature

I certify the information in Parts I and II to be true and complete (Signature)	WARNING: Furnishing false information on this form may result in a fine of not more than \$10,000 or imprisonment of not more than 5 years, or both. (18 USC 1001)
---	---

IV. Completed by Postal Clerk

Post Office Name (Station/Branch) & Address (City, State, ZIP)	Transaction Date (Mo., Day, Yr.)
	Total Value of All Money Orders Purchased \$
How Many Money Orders Were Issued?	Inclusive Serial Numbers of Money Order Sold (Start, End)
Serial Number and Amount of Each Money Order (Use reverse if you need more space)	

I certify I verified the personal information on purchaser by examining the above -noted ID	Printed Name and Signature of Clerk Completing this Transaction
---	---

Missing U.S. Money Order Forms—Do Not Cash

To be posted and used by retail window employees. As directed, destroy previous notices. Any interim notice should be destroyed when the numbers listed appear in the *Postal Bulletin*. The actual serial numbers consist of the first 10 digits on the money orders.

302 000 0000	to	399 156 7119	to	7199	421 130 9300	to	9399	453 650 1140	to	119	
	302 123 9999	399 203 5064	to	5099	421 313 4500	to	4999	454 013 2919	to	299	
360 011 1690	to	1699	399 296 9909	to	9999	421 364 5537	to	5599	454 186 2411	to	249
369 345 0188	to	0199	399 792 7775	to	7799	421 656 2609	to	2699	454 268 4883	to	489
369 674 8141	to	8199	399 792 8300	to	8399	421 988 9700	to	9799	454 302 5400	to	549
369 718 3783	to	3799	399 396 8935	to	8999	422 172 4667	to	4699	454 490 8300	to	839
370 193 8257	to	8299	400 427 1051	to	1999	422 484 4212	to	4299	454 547 7434	to	749
375 637 9365	to	9999	401 045 1505	to	1549	422 556 1270	to	1299	454 922 4867	to	489
375 744 7930	to	7999	401 045 1571	to	1599	422 587 7024	to	7099	455 221 1348	to	149
375 829 3400	to	3499	401 294 2700	to	2799	422 819 7533	to	7599	455 364 2147	to	219
375 851 9100	to	9199	401 310 9505	to	9599	422 842 5073	to	5087	455 399 5400	to	549
376 850 0813	to	0899	401 382 5312	to	5399	424 500 6050	to	6099	455 476 0676	to	069
376 855 6764	to	6999	402 578 7876	to	7899	424 641 8500	to	8599	455 543 0618	to	069
376 903 0721	to	0738	403 125 6744	to	6799	424 871 6600	to	6699	456 410 9006	to	909
376 906 3206	to	3299	403 260 7000	to	7499	425 298 2352	to	2399	456 619 4460	to	449
377 113 7461	to	7499	403 280 6470	to	6499	425 418 4269	to	4299	457 333 2686	to	269
377 224 2300	to	2599	403 685 8600	to	8699	425 418 4405	to	4499	457 729 1767	to	177
377 955 4285	to	4399	404 003 0300	to	0399	427 412 6337	to	6499	457 937 8616	to	869
378 029 9347	to	9399	404 041 8838	to	8899	427 481 0900	to	0999	458 028 9810	to	989
378 085 3679	to	3699	404 071 4268	to	4299	428 027 2742	to	2752	458 057 2712	to	299
378 210 9090	to	9099	404 347 5356	to	5399	429 474 4172	to	4199	458 337 5222	to	529
378 351 1063	to	1099	404 347 5548	to	5599	429 889 2900	to	2999	458 354 7654	to	799
378 630 9489	to	9599	404 726 4500	to	4599	430 150 4401	to	4599	458 671 8678	to	869
379 128 9584	to	9599	404 961 5001	to	5199	430 172 9800	to	9899	458 671 8721	to	879
379 509 2600	to	2699	405 325 0188	to	0198	430 177 1900	to	1999	459 274 7624	to	769
379 679 8060	to	8099	406 009 4587	to	4599	430 177 2000	to	2099	459 365 5432	to	549
379 843 5100	to	5199	406 260 6830	to	6899	430 444 9500	to	9699	459 378 5764	to	579
380 093 9600	to	9611	406 459 6497	to	6499	430 664 4069	to	4099	459 472 4816	to	489
380 165 1165	to	1199	406 733 3000	to	3999	432 168 8419	to	8499	459 472 4900	to	499
380 489 6800	to	6899	407 545 1556	to	1599	432 708 6800	to	6999	460 550 1909	to	199
380 572 1840	to	1899	407 594 0412	to	0599	432 744 1544	to	1599	460 997 5234	to	529
381 077 3600	to	3699	407 692 9100	to	9299	432 995 9775	to	9799	461 973 6443	to	649
381 325 4500	to	4599	408 265 2275	to	2288	433 003 5800	to	5899	462 152 0107	to	029
381 540 9900	to	9999	408 499 7700	to	7799	433 757 3047	to	3099	462 274 1072	to	109
381 604 2510	to	2699	408 499 7900	to	7999	433 765 4003	to	4099	462 277 8373	to	839
381 645 9525	to	9599	408 682 8484	to	8599	434 482 7060	to	7199	463 176 4108	to	411
381 924 0748	to	0799	408 698 7015	to	7099	434 513 2386	to	2399	463 176 4206	to	422
383 156 6968	to	6999	409 072 3941	to	3999	434 968 3076	to	3092	463 185 2600	to	279
383 156 7128	to	7199	410 491 2311	to	2399	435 303 1831	to	1842	463 227 7711	to	779
383 156 7300	to	7999	410 694 8400	to	8599	435 303 1986	to	1999	463 808 3485	to	349
383 299 2081	to	2099	410 775 1500	to	1599	435 666 6092	to	6399	464 629 9000	to	939
383 314 3968	to	3999	410 795 7927	to	7999	436 082 6400	to	6899	464 711 4332	to	439
383 892 1000	to	1344	410 867 0917	to	0966	436 160 6441	to	6499	465 692 3963	to	399
383 892 1382	to	1399	410 867 0970	to	0999	437 316 7115	to	7199	465 698 8300	to	859
385 568 2330	to	2399	411 868 1023	to	1199	437 427 0500	to	3499	465 743 7745	to	779
385 599 7554	to	7575	411 922 2322	to	2399	439 310 0458	to	0499	466 798 6056	to	606
385 774 2024	to	2099	412 193 0900	to	0999	440 698 1947	to	1999	467 147 4300	to	439
387 314 5574	to	5599	412 395 8599	to	8699	440 858 6300	to	6399	468 079 5782	to	579
389 696 2400	to	2799	412 485 6500	to	6599	440 858 6420	to	6499	469 067 2817	to	289
389 846 3104	to	3135	412 485 6610	to	6699	440 858 6500	to	7299	469 127 8000	to	819
389 846 3145	to	3195	412 885 5953	to	5999	441 199 1655	to	1699	469 213 0359	to	039
389 887 9211	to	9230	414 193 3608	to	3674	443 127 3648	to	3699	469 213 0500	to	059
389 887 9234	to	9299	414 193 3677	to	3699	443 127 4000	to	4099	469 658 1961	to	199
390 001 3182	to	3199	414 411 7348	to	7399	443 673 7900	to	7999	469 658 2093	to	209
390 001 3500	to	3699	414 640 0757	to	0799	443 800 9335	to	3999	469 666 9900	to	999
390 545 5974	to	5999	414 965 1727	to	1799	444 382 8822	to	8899	469 678 1900	to	199
391 104 6146	to	6199	415 161 8858	to	8868	444 457 3854	to	3899	469 781 4900	to	499
391 783 3020	to	3599	417 302 8104	to	8199	450 048 4173	to	4199	470 755 5800	to	5818
391 792 6100	to	6199	417 387 6532	to	6599	450 048 4442	to	4699	471 918 0300	to	099
392 668 2956	to	2999	417 496 6800	to	6999	450 560 5173	to	5199	472 191 6700	to	679
392 854 8500	to	8899	417 871 9250	to	9299	450 620 3077	to	3099	471 985 2408	to	241
393 584 7566	to	7699	417 930 9533	to	9599	450 620 3135	to	3199	472 987 0213	to	024
393 650 0074	to	0099	418 164 6500	to	6799	450 780 2716	to	2799	472 987 0290	to	029
393 838 8316	to	8499	418 423 9863	to	9899	451 109 2967	to	2984	473 151 2069	to	209
393 893 6007	to	6099	418 633 5922	to	5999	451 115 4110	to	4125	473 151 2100	to	219
394 126 6907	to	6999	418 719 8520	to	8599	451 115 4127	to	4199	473 666 9183	to	919
394 189 0405	to	0599	418 744 2235	to	2299	452 265 0074	to	0099	473 952 3429	to	349
394 822 3243	to	3278	418 962 2848	to	2899	452 265 0246	to	0299	475 134 9362	to	939
394 990 1810	to	1899	419 543 0286	to	0299	452 265 0335	to	0399	475 167 9667	to	969
395 343 3264	to	3299	419 730 0313	to	0369	452 265 0400	to	0999	475 319 3415	to	349
395 373 3035	to	3099	419 730 0380	to	0399	452 509 1169	to	1199	475 319 3415	to	349
395 396 9649	to	9799	420 599 0734	to	0798	452 855 6471	to	6499	475 319 3648	to	369
395 970 3240	to	3299	420 661 4115	to	4199	452 890 4679	to	4699	475 319 3700	to	379
397 622 4054	to	4099	420 758 9500	to	9699	452 900 8215	to	8238	475 340 6400	to	659
397 819 8902	to	8999	420 969 3951	to	3971	453 117 9146	to	9199	475 850 6101	to	619
398 149 7200	to	7699	420 969 3973	to	3999	453 334 3631	to	3699	475 875 2500	to	259
399 070 0872	to	0899	421 116 3565	to	3599	453 603 7841	to	7891	476 169 8264	to	829

Missing U.S. Money Order Forms—Do Not Cash—Continued

476 189 3000	to 3499	480 526 2000	to 2099	700 703 1768	to 1773	806 015 3885	to 3899
478 010 4243	to 4268	500 064 1858	to 1869	701 028 6780	to 6899	806 087 1100	to 1499
478 010 4270	to 4291	700 065 2570	to 2599	802 678 2605	to 2699	806 268 9275	to 9299
478 469 7838	to 7858	700 065 4800	to 4899	803 605 2840	to 2899	806 534 3400	to 3477
478 469 7883	to 7899	700 190 3350	to 3359	803 605 6300	to 6499	870 054 4814	to 4899
479 412 9900	to 9999	700 228 6048	to 6099	805 323 5006	to 5024	990 117 5600	to 5999
479 860 7000	to 7199	700 650 0452	to 0499	805 466 7255	to 7299		

Check for altered dollar amounts by holding money orders to the light.

Mail Alert

The mailing below will be deposited in the near future. Offices should attempt to honor the requested home delivery dates, but not at an expense. Mailers wishing to participate in these alerts, for mailings of one million pieces or more, should contact the Sales and Account Management Division at (202) 268-2271, by the 15th of the month preceding the month of the requested delivery date.

Title of mailing	Class and type of mail	Requested delivery dates	Number of pieces (millions)	Distribution	Presort level	Comments
Billy Graham Letter.....	Third/Letter.....	March 22-31	1.6	Nationwide.....	CARRT Barcoded 3/5 Basic.	3 7/8" x 7 1/8" envelope from Minneapolis.
JC Penney Anniversary Sale.....	Third/Catalog...	March 25-27	11.5	Nationwide.....	CARRT.....	RRD.
Decision Magazine.....	Third/Flat.....	March 26-31	1.4	Nationwide.....	CARRT 3/5 Basic.	8 1/4" x 10 5/8" 44 page tabloid from Minneapolis.
Home Decorating Extravaganza.	Third.....	March 27-31	2.5	Nationwide.....	5 Digit Basic....	
Sears Retail.....	Third/Flat.....	March 29-31	18	Nationwide.....	CARRT 125 WS.	
Talbots Sale Catalog.....	Third/Bulk.....	March 29-31	1.5	Nationwide.....	CARRT 3/5 Digit Basic.	8" x 10 3/4" Catalog.
Avon C9 Spring.....	Third/Catalog...	March 29-31	1.2	Nationwide.....	CARRT 5 Digit Basic.	
Sally Beauty Supply.....	Third/Letter.....	March 29-31	2	Nationwide.....	Residual 3%, 3/5 Digit 37%, CARRT 60%.	
Service Merchandise Easter Sale.	Third/Bulk.....	March 29-31	6.1	Nationwide.....	CARRT 50% 125 PWC, ZIP + 4.	Palletized RRD.
Williams-Sonoma Catalog for Cooks.	Third/Letter.....	March 29-31	3.5	Nationwide.....	CARRT 5 Digit Basic.	
JC Penney Super Shoe.....	Third/ Postcard.	March 29-31	2.3	Nationwide.....	CARRT.....	Harte-Hanks.
JC Penney Million Dollar Jewelry.	Third/Booklet...	Mar. 30-April 1.	7	Nationwide.....	CARRT.....	Harte-Hanks.
Radio Shack Spring Sale.....	Third/Letter.....	Mar. 30-April 1.	12	Nationwide.....	CARRT.....	9 1/2" x 5 1/2".
JC Penney Dockers.....	Third/ Postcard.	Mar. 31-April 2.	12.9	Nationwide.....	CARRT.....	Harte-Hanks.
Fashion Gal, Fashionation, Something Special, Right Price, Fashion Mine, Show Off, Tempo.	Third/Letter.....	April 3-5	1.7	Nationwide.....	CARRT 3/5 Digit Basic.	6" x 11" multicolor, 6 pages folded, Gateway Apparel.
LL Bean Summer 93.....	Third/Catalog...	April 6-8	7.5	Nationwide.....	CARRT.....	7 7/8" x 9".



**The life of the party
can be deadly
behind the wheel**



Missing Canadian Money Order Forms—Do Not Cash

To be posted and used by retail window employees. As directed, destroy previous notices. Any interim notices should be destroyed when the numbers listed appear in the *Postal Bulletin*. The new money order serial numbers consist of the first nine digits. The 10th digit is a check digit only. In addition to this listing, do not cash: (1) all card type orders, and (2) new style money orders 000,000,001 to 600,000,000. Advise holders to send invalid money orders to Canada Post Corporation, Ottawa, Canada K1A 0B1.

575,913,145	to	3,200	616,339,601	to	9,700	630,904,718	to	4,900	646,938,901	to	9,100
579,877,101	to	7,200	617,008,801	to	009,000	630,995,315	to	5,400	646,993,871	to	3,930
580,207,301	to	7,770	617,127,319	to	8,100	631,381,731	to	1,800	647,061,150	to	1,200
589,005,217	to	5,300	617,461,706	to	1,800	631,817,556	to	7,600	647,291,842	to	2,000
589,876,801	to	6,900	617,478,723	to	8,800	631,846,614	to	6,700	647,993,501	to	3,700
590,230,567	to	0,600	617,582,829	to	2,900	632,448,956	to	9,300	647,993,801	to	4,000
594,724,301	to	4,900	617,739,158	to	9,200	632,939,648	to	9,800	648,020,140	to	0,200
594,768,672	to	8,700	618,333,401	to	4,100	633,135,035	to	5,300	648,056,401	to	6,600
594,952,701	to	3,400	618,625,824	to	5,900	633,175,518	to	5,600	648,117,901	to	8,200
596,073,100	to	3,500	619,215,945	to	6,000	633,537,840	to	7,900	648,171,861	to	1,900
596,308,901	to	9,100	619,225,550	to	5,600	634,141,201	to	1,500	648,213,372	to	3,500
597,044,346	to	4,400	619,226,975	to	6,999	634,328,501	to	8,600	648,484,665	to	4,700
597,253,460	to	3,500	619,326,641	to	7,000	634,839,201	to	9,300	648,578,708	to	8,799
598,659,921	to	660,100	619,357,588	to	7,600	634,848,780	to	8,800	648,683,301	to	3,400
599,664,001	to	5,700	619,580,012	to	0,100	635,296,451	to	6,500	649,376,401	to	6,600
600,349,301	to	9,400	619,765,826	to	766,400	635,298,587	to	8,600	649,730,009	to	0,100
600,439,001	to	9,100	619,906,171	to	6,200	635,312,907	to	313,000	650,621,501	to	1,700
600,493,650	to	3,700	620,104,808	to	4,900	635,376,834	to	6,900	650,678,503	to	8,580
600,526,018	to	6,400	620,256,601	to	6,700	635,468,101	to	8,200	650,707,956	to	7,980
601,042,674	to	2,700	620,514,863	to	4,900	635,681,001	to	1,100	651,854,961	to	5,010
601,652,701	to	3,300	620,521,444	to	1,500	635,699,601	to	700,600	651,897,101	to	7,240
602,528,606	to	9,000	620,711,701	to	1,800	636,000,201	to	0,300	651,948,119	to	8,130
603,708,901	to	9,200	620,894,501	to	4,600	636,012,675	to	2,700	651,948,703	to	8,750
603,780,401	to	0,500	620,969,476	to	9,500	636,030,135	to	0,200	651,974,610	to	4,620
603,780,701	to	0,800	621,180,332	to	0,400	636,042,001	to	2,200	652,121,238	to	1,248
603,780,942	to	1,000	621,182,939	to	3,400	636,063,001	to	3,100	653,053,022	to	3,100
604,020,801	to	0,900	621,715,301	to	5,400	636,931,725	to	1,800	653,151,811	to	1,830
604,083,174	to	3,700	622,032,701	to	2,800	637,043,605	to	3,700	653,317,761	to	7,800
604,122,517	to	2,900	622,032,901	to	3,000	637,789,301	to	9,400	653,506,601	to	7,000
604,181,801	to	2,100	622,659,101	to	9,200	637,860,101	to	0,200	653,620,693	to	0,700
604,799,901	to	800,800	623,363,613	to	3,800	639,522,101	to	2,400	653,789,801	to	790,100
605,367,722	to	8,200	623,447,801	to	7,900	639,857,736	to	7,900	653,822,586	to	2,800
605,721,494	to	1,500	624,023,279	to	3,400	640,272,919	to	3,200	654,345,814	to	5,900
606,915,240	to	5,300	624,173,970	to	4,000	640,281,501	to	1,600	654,563,101	to	3,300
607,183,001	to	3,300	624,512,201	to	3,000	640,666,076	to	6,200	654,568,825	to	8,900
607,273,964	to	4,500	624,555,001	to	556,100	641,011,901	to	2,600	655,365,961	to	6,030
607,586,501	to	6,600	625,060,673	to	0,700	641,121,411	to	1,500	655,387,856	to	7,870
607,591,119	to	1,200	625,196,431	to	6,500	641,196,269	to	6,300	657,044,001	to	4,100
607,673,301	to	4,500	625,206,601	to	6,900	641,309,609	to	9,658	657,341,465	to	1,478
607,842,343	to	2,500	625,553,170	to	3,200	641,574,196	to	4,650	657,353,079	to	3,100
607,930,501	to	1,000	625,706,401	to	6,500	641,583,509	to	3,600	657,364,301	to	4,500
608,011,756	to	1,200	625,932,001	to	2,100	641,962,607	to	2,630	657,769,501	to	9,600
608,288,084	to	8,100	625,945,101	to	5,400	642,415,969	to	6,000	658,860,201	to	0,300
608,678,701	to	9,100	625,966,101	to	6,200	642,983,001	to	3,100	658,853,204	to	3,700
608,722,023	to	2,200	626,035,401	to	5,500	643,022,701	to	2,900	659,758,663	to	8,700
609,084,101	to	5,100	626,174,177	to	4,200	643,201,801	to	2,000	659,900,808	to	0,901
609,394,901	to	5,000	626,305,019	to	5,100	643,243,401	to	3,500	659,913,171	to	3,240
610,368,452	to	8,465	626,567,516	to	7,528	643,452,130	to	2,200	660,304,493	to	4,600
611,216,001	to	7,100	626,613,101	to	3,300	643,726,901	to	7,500	660,596,601	to	6,700
611,338,466	to	8,700	626,871,601	to	2,500	643,736,201	to	6,400	660,644,144	to	4,300
611,345,254	to	5,300	627,079,501	to	9,900	644,475,893	to	6,300	661,162,159	to	2,220
611,387,101	to	7,200	627,097,438	to	7,500	644,858,601	to	8,800	661,165,221	to	5,250
611,874,375	to	4,400	627,171,001	to	1,400	644,932,601	to	3,100	661,179,997	to	180,020
611,891,801	to	2,400	627,974,001	to	4,300	644,941,801	to	2,100	661,183,221	to	3,260
611,930,472	to	0,500	628,196,859	to	197,100	644,990,601	to	1,100	661,187,652	to	7,690
612,182,901	to	3,700	628,390,001	to	0,300	645,167,901	to	8,200	661,562,501	to	3,000
612,185,601	to	6,100	628,455,689	to	6,200	645,541,101	to	1,300	661,581,517	to	1,600
612,472,501	to	3,100	628,600,766	to	601,000	645,550,622	to	0,700	661,997,658	to	7,686
612,512,359	to	2,700	629,893,459	to	3,500	645,605,886	to	5,900	663,119,201	to	9,300
613,359,706	to	9,732	630,199,031	to	9,100	645,634,441	to	4,600	663,352,552	to	2,700
613,364,701	to	5,100	630,233,957	to	4,300	645,634,444	to	0,465	664,774,743	to	4,800
613,856,401	to	6,600	630,252,101	to	2,200	646,262,901	to	3,200	665,241,112	to	1,200
614,442,385	to	2,400	630,301,208	to	1,300	646,264,363	to	4,400	665,956,831	to	6,880
614,487,801	to	7,900	630,331,801	to	332,100	646,270,054	to	0,085	665,967,877	to	7,920
614,608,143	to	8,152	630,334,070	to	4,600	646,321,801	to	2,000	666,004,501	to	5,000
615,753,401	to	3,600	630,342,552	to	2,600	646,322,201	to	2,800	666,025,401	to	5,800
616,042,700	to	3,300	630,642,629	to	2,700	646,505,901	to	6,100	666,395,901	to	6,100
616,192,014	to	2,100			646,509,616	to	9,700				
616,320,501	to	1,200			646,875,648	to	5,700				
					646,876,001	to	6,200				
					646,899,702	to	9,713				

Check for altered dollar amounts by holding money orders to the light.



INVALID EXPRESS MAIL CORPORATE ACCOUNT NUMBERS

To be posted and used by retail/acceptance clerks. This listing supersedes all previous notices, which must be destroyed. Retail/acceptance clerks must not accept Express Mail shipments bearing any of the invalid numbers (listed below) in the "customer number" or "agreement number" section of the label or form.

NOTE: The first 6 digits of a 9-digit Custom Designed Service and Next Day Pickup Service Agreement make up the Corporate Account Number.

005018	018393	028818	060240	068469	080041	095184	105460	113284	117435	119246	152312	193460
005035	018421	028933	060248	069162	080136	095393	105470	113319	117492	119308	152340	193523
005053	018604	029015	060313	069439	080203	095423	105476	113333	117522	119321	152385	195072
005077	018705	029031	060422	069471	080246	095661	105503	113487	117552	120142	152414	195087
005093	018821	029172	060436	069537	080264	095882	105515	113552	117626	120165	152488	196125
005110	018833	029401	060481	069695	080275	095950	105517	113574	117670	120226	152506	198090
005241	018849	029582	060496	069735	080327	095985	105543	113613	117678	120228	152531	198096
005317	018927	029609	060521	069908	080331	096045	105553	113624	117798	122236	152577	200015
005329	019090	029624	060536	069935	080345	096213	105600	113829	117812	122279	152591	200027
005339	019194	029668	060572	070117	080446	096226	105625	113939	117820	122287	152599	200035
005396	019272	029690	060698	070129	080535	096240	105730	113951	117826	122311	152623	200045
005437	019307	029794	060731	070148	080596	096381	105740	113954	117827	124051	152640	200161
005441	019652	029834	060732	070151	080708	096412	105750	114506	117837	124063	152885	200194
005445	019668	030024	060827	070174	080710	096538	105797	115027	117844	124075	152901	200222
005458	019705	030042	060849	070285	085044	096581	105873	115237	117881	124103	152914	200246
005477	020043	030045	060861	070546	085304	100041	105917	115243	117896	125006	152940	200248
005489	020315	030075	060879	070634	085410	100305	105921	115251	117906	125029	152978	200249
005527	020323	030087	061211	071036	085567	100369	105930	115275	117912	125031	153011	200253
005549	021103	030147	061256	071078	085580	100622	105980	115281	117964	125045	153060	200263
005636	021113	030148	061337	071189	085901	101160	105983	115290	117966	125067	156041	200319
006018	021235	030177	061393	071352	088140	101611	106165	115306	117986	125071	156070	200369
006063	021399	030235	061411	071417	088333	101697	106168	115328	118052	125203	156166	200415
008277	021459	030251	061483	071535	089198	101876	106224	115334	118085	125222	159006	200504
008610	021609	031104	061489	071579	089247	102790	106339	115367	118134	126013	159014	200586
009296	022016	031152	061537	071723	089427	102806	106346	115383	118138	126042	159068	200730
009305	022029	032012	061597	071776	089772	103026	106355	115390	118199	126056	165068	200764
009403	022044	033064	061637	071830	089773	103172	106355	115390	118199	126056	165068	200764
009461	022158	034031	061700	071889	089814	103718	106455	115405	118217	126061	165112	200805
010116	022224	037029	061728	071905	090080	103860	107077	115406	118251	128973	165159	200820
010305	022232	038157	061748	071924	090353	103872	107109	115410	118254	128989	165160	200847
010444	022318	038168	062047	071997	090393	103987	107194	115451	118287	129876	165162	200961
010455	022588	038183	062060	075236	090456	104066	108100	115477	118306	130273	165235	200965
010515	022866	038199	062063	075244	090474	104081	108128	115498	118359	132111	165292	207547
011105	022903	038202	062067	075345	090610	104115	108269	115533	118365	132144	170119	207565
011210	023017	039012	062117	075414	090855	104116	108336	115548	118374	132218	171215	207679
011223	023159	041040	064083	075415	091029	104157	109233	115551	118381	132231	173066	207687
011283	023200	041056	064208	075507	091336	104255	109302	115562	118389	132288	174058	207700
012154	023255	041063	064444	075540	091448	104295	109496	115575	118402	132296	177064	207707
014084	023344	041074	064483	075596	091608	104313	109504	115589	118406	132298	178051	208130
014154	023363	041107	064451	075618	091749	104322	109507	115612	118419	134018	180078	208143
014391	023394	041142	064584	075625	091776	104348	109516	115623	118438	136048	180093	208261
014395	023412	042011	064653	075684	092019	104350	109535	115637	118487	136049	184004	208525
014402	024142	042086	064679	075700	092145	104388	109625	115646	118488	139256	187006	208560
014506	025043	043008	064728	075715	092276	104399	109642	115675	118614	142230	191009	208597
014514	025069	044029	064812	075731	092370	104526	109850	115680	118616	142453	191021	208667
014625	025079	044034	064816	076062	092869	104535	109851	115702	118618	142650	191082	208687
014731	025210	044064	064844	076105	092904	104562	110108	115752	118624	146293	191116	208740
014738	025225	044068	064892	076176	092916	104570	110211	115779	118650	146415	191117	208759
014777	026218	044072	064963	076205	092921	104576	110288	115863	118663	146424	191121	209061
014861	026378	044098	064975	076368	093095	105082	110349	115919	118713	146545	191166	209117
014865	027526	044099	064985	076545	093101	105133	110395	115947	118725	146615	191188	210008
014989	027633	046023	065115	076588	093220	105137	110469	115971	118728	146643	191839	210187
015003	027656	046035	065239	076648	093348	105192	110566	115992	118730	148269	191965	210194
015029	027772	047021	065315	076655	093574	105207	110576	116035	118731	148277	192069	210198
015057	027876	047106	065367	076690	093608	105251	110746	117139	118746	150036	192120	212424
015112	027885	047152	065472	076691	093858	105253	111180	117209	118776	150107	192494	212848
015169	028004	047155	065661	076755	093966	105274	111212	117260	118796	150118	192629	212872
016052	028045	047157	065849	076804	094106	105287	111263	117282	118867	150152	192657	212901
016212	028076	054192	065958	076909	094162	105293	111287	117284	118948	150158	192903	212971
016514	028086	054198	065962	076940	094176	105305	111634	117290	118962	150180	192917	220320
016576	028094	056066	066004	076988	094275	105310	111642	117301	118975	151028	192925	220336
016619	028154	057013	066009	077717	094460	105329	111716	117322	118993	151163	193124	220354
016703	028330	058062	066398	077743	094567	105345	112268	117345	119038	151168	193133	220381
018218	028339	060062	067240	077833	094790	105349	112551	117352	119134	152056	193164	220558
018223	028344	060126	067325	077934	094831	105363	112989	117364	119145	152058	193173	220591
018325	028362	060147	068242	078158	094879	105372	113071	117370	119165	152118	193260	220614
018354	028388	060203	068284	078892	094986	105381	113271	117398	119179	152157	193314	220615
						105422	113282	117407	119213	152182	193319	220616

INVALID EXPRESS MAIL CORPORATE ACCOUNT NUMBERS—Continued

220617	292343	317290	331034	334013	349865	431021	462739	497078	600078	606659	608419	712231
220625	292374	320015	331185	334290	349948	432245	464081	497202	600225	606680	608441	718002
220656	293112	320024	331334	334318	349999	432606	465007	503002	600300	606681	608465	720012
220657	293155	320052	331413	334418	352479	432712	466612	503004	600418	606711	611201	722060
220658	294122	320510	331420	334450	352504	432738	467047	503019	600463	606716	614004	722156
221001	294370	320765	331464	334606	358065	436134	468084	503202	600491	606739	618004	724050
221153	294385	320839	331484	334700	358100	436242	468229	511019	600500	606781	618048	730058
221341	294413	320931	331496	334805	358270	436268	468256	511720	600589	606861	624060	730066
221413	295151	321088	331525	334817	359017	436358	468305	511875	600657	606873	628127	730118
221449	295365	322029	331549	334819	361205	441090	469126	514001	600766	606912	629072	730143
221464	295386	322032	331647	334941	366010	441226	469145	515023	600811	606931	631309	730156
221470	295402	322068	331648	335068	372278	441279	471026	527022	600835	606972	631310	730185
221485	296089	322138	331656	335114	372392	441282	471083	531335	600855	606990	631318	730288
221515	296133	322185	331671	335158	372466	441306	473007	531374	600897	606997	631449	730436
221542	296199	322247	331683	335236	372493	441391	473043	531402	600969	607025	631450	730829
222022	296396	322255	331705	335259	372520	441392	474037	532324	601297	607051	631463	730849
222165	297050	322333	331739	335430	372540	441413	476020	532525	601381	607058	631626	731304
222217	300054	322386	331782	335467	372550	441421	479079	532661	601423	607087	631628	731345
223269	300144	322508	331828	335471	372554	441459	480036	532772	601496	607110	631682	731597
223273	301883	322542	331829	335499	372608	441478	480061	532835	601534	607116	631751	731946
223323	305084	322550	331836	335744	372610	441623	480115	532836	601625	607119	631881	740121
223339	305252	322700	331888	335881	372654	441712	480202	532933	601643	607163	631895	740282
226066	305453	322746	331935	336207	372659	441728	480824	537210	601654	607184	631960	740401
229003	305479	322755	332011	336280	372668	441798	480943	537242	601667	607190	631967	740438
229067	305939	322772	332034	336356	372699	441964	480997	543160	601672	607233	641003	740476
232021	305964	322794	332047	336358	372717	443155	481337	543410	601809	607249	641069	740487
232147	306144	322851	332074	336633	372744	443172	481452	543530	602239	607325	641295	740576
235215	306187	322868	332077	336798	372814	443191	481518	544059	602266	607389	641380	740585
235289	306272	323135	332086	337109	372816	443192	482106	546122	602444	607407	641690	740633
235296	306317	325031	332114	337117	373009	443238	482145	549156	602448	607424	648185	740841
240508	306333	326176	332148	337152	374024	443243	482280	551253	602503	607437	656104	740907
240522	306482	326345	332179	338025	374035	443255	482306	551270	602515	607511	657115	741016
240539	306523	326367	332197	338032	374041	444205	482350	551577	602561	607566	658131	741452
242816	306558	326577	332214	338132	374043	444465	482578	551660	602599	607570	658151	741594
253250	306655	327464	332304	338182	376124	445131	482699	551687	602605	607591	661108	741814
253267	306784	327537	332310	338220	380184	447091	482707	553215	602687	607593	661121	741851
254018	306885	327591	332321	339028	381019	447157	482980	553303	602700	607594	662450	741967
257110	306922	327611	332327	339029	381175	447160	483026	553327	604554	607628	662466	743042
261008	306972	327615	332332	339045	381205	448023	483111	553349	604611	607631	662480	743051
270029	307016	328260	332341	339046	381250	450094	483165	553394	604616	607634	666465	744068
271023	307031	328347	332343	339086	381631	450165	483335	553412	605014	607680	670008	744132
272052	311085	328545	332349	339134	381947	451003	483347	553558	605067	607708	672535	744140
274040	311086	328664	332372	339146	387016	451080	483349	553561	605115	607709	672566	746014
274283	311261	328702	332384	339151	388060	452014	483472	553583	605360	607732	672601	746033
274302	311288	328731	332439	339174	392162	452190	483606	553670	605622	607762	680002	749020
276010	311394	328748	332452	339210	392469	452251	483615	553756	605655	607820	680003	750038
276137	311494	328758	332467	339224	392529	452420	483699	553776	605734	607861	680008	750064
276147	311540	328769	332471	339237	392580	452434	483711	553789	605755	607879	680022	750085
276233	311560	329266	332498	339378	392602	452506	483795	553864	605938	607891	681001	750096
281051	311563	329288	332512	339783	392609	452861	483846	553875	606012	607928	681334	750266
282288	311606	329359	332542	340041	392630	454064	483950	554571	606025	607933	681438	750404
282327	311635	329477	332604	340122	393083	454174	485153	554587	606028	607995	681485	750543
282354	312391	329546	332670	340222	395220	454181	485212	554686	606067	608049	681532	750595
282545	314178	330035	332684	340268	402039	454246	485247	554851	606090	608066	681537	750662
282561	314204	330069	332732	340295	402153	454341	485280	557023	606101	608098	685037	750730
282579	314211	330077	332735	340325	402230	454348	486217	557024	606182	608106	685079	750841
282599	314218	330088	332789	340468	402298	454399	486226	558030	606193	608137	685080	750998
282644	314253	330090	332795	340560	402311	454420	486250	558039	606235	608152	685139	751064
283181	314306	330167	332835	340706	402606	454443	489277	558060	606238	608189	701006	751172
283183	314337	330259	332844	340889	402745	454466	489312	558076	606262	608198	701106	752057
283324	314394	330285	332859	340915	402830	454546	489390	563002	606272	608234	701154	752094
283360	314429	330350	332991	340947	402837	454573	490190	563039	606282	608243	701705	752194
283459	314432	330389	333128	340968	404100	458007	490193	564011	606292	608259	705141	752470
283506	314724	330434	333231	349016	405087	458079	490265	570101	606307	608266	705148	752492
283509	314730	330494	333257	349087	405096	460085	490283	572015	606321	608276	705175	752505
286014	314731	330635	333289	349193	410086	462322	490460	581120	606373	608281	708277	752690
286072	314736	330731	333306	349226	410139	462494	490472	585247	606472	608309	708517	752745
292212	314773	330770	333483	349286	410175	462506	490491	597513	606584	608322	708531	752855
292236	314800	330824	333595	349304	420304	462529	492008	598609	606615	608358	708755	752888
292291	314836	330942	333698	349351	423054	462560	494105	599517	606617	608367	711422	752962
292299	317268	330945	333914	349358	430066	462568	495140	599524	606642	608401	711638	752986
292330	317278	330990	333939	349792	430103	462645	495399	600064	606649	608406	711657	

INVALID EXPRESS MAIL CORPORATE ACCOUNT NUMBERS—Continued

754009	771688	782025	802069	840171	891338	904383	920085	926747	931427	945784	960063	972945
754026	771695	782055	802082	840197	891433	904394	920127	926832	931547	945896	967056	972970
754037	771703	782088	802117	840282	891465	904427	920204	926963	931608	945919	967177	973203
757281	771716	782630	802139	840306	891500	906149	920293	926975	931661	945928	967239	973222
757546	771717	782696	802153	840329	891504	906368	920315	927017	931668	946163	968021	973317
760438	771721	782752	802157	840370	891507	906426	920318	927104	931722	946372	968168	974033
760616	771724	782818	802199	841362	891543	906566	920375	927115	931770	946388	968214	974144
760658	771749	784130	802239	841402	895176	906595	920398	927152	931846	948114	968296	975017
761651	771750	784135	802260	841410	895243	906652	920426	927171	931936	949208	968310	975023
761724	771751	784147	802370	841413	895278	907103	921006	927198	932521	949372	968411	975031
761768	771759	784170	802486	841445	895381	907536	921128	927273	932523	949452	968430	976048
761793	771770	784315	802601	841568	895430	907960	921148	927300	932601	949925	968482	980095
762044	771783	784331	802606	841688	900016	907967	921218	927342	933126	950006	968483	980185
763122	771792	784333	802615	841828	900051	910245	921228	927382	933161	950008	968544	980286
764015	771795	785376	802725	841871	900128	910311	921284	927456	933179	950016	968712	980297
765573	771797	785467	802773	844063	900148	911089	921303	927478	933194	950071	968739	980431
767538	771808	786038	802867	844098	900212	911151	921364	927535	933214	950093	968763	980473
770804	771809	786054	802919	844126	900217	912238	921398	927596	933276	950229	968882	980524
771003	771832	787338	803121	844184	900251	912268	921407	927619	933337	950318	968971	980645
771016	771840	787516	803128	844212	900267	912272	921469	927645	933351	950406	969032	981227
771017	771851	787682	803158	845021	900345	913767	921492	927664	933358	950615	970015	982163
771018	771852	787704	803171	847035	900429	913835	921593	927678	933442	950678	970046	982289
771019	771853	787724	803192	847079	900443	913844	921642	927741	934209	950703	970100	982300
771026	771864	787772	804141	850025	900577	914058	921680	927782	934227	951013	970110	982562
771034	771870	787791	804209	850287	900872	914259	921752	927824	934262	951068	970127	982563
771137	771872	790029	805161	850643	900876	914274	921753	927874	935184	951135	970130	982581
771169	771880	790034	805179	850704	900959	914282	921806	927881	937271	951213	970131	982601
771246	771881	791153	805212	850815	901049	914396	921962	927947	937627	951334	970146	982623
771274	771887	794247	805417	850909	901090	914480	922040	928176	939147	951346	970151	982625
771286	771891	794421	806052	850941	901456	914483	924291	928292	939560	951355	970201	982625
771316	771900	797164	806138	852092	901751	914525	924448	928311	940012	951609	970203	982625
771331	771913	797195	807015	852163	901767	914727	924455	928384	940569	951635	970246	982625
771332	771915	797210	809115	852217	901782	914810	924505	928388	940577	951659	970290	982625
771356	771923	799021	809195	852245	901790	914851	925112	928443	940749	951680	970311	982625
771366	771947	799235	809216	852290	901876	914856	926030	928464	940760	951686	970318	982625
771418	771957	800173	809314	852292	902000	914916	926031	928471	940792	951697	970326	982625
771435	771958	800263	809358	852398	902067	914974	926049	928491	940800	952288	970336	982625
771449	771964	800265	810004	852399	902086	915011	926075	928549	940824	954177	970349	982625
771452	771993	800295	811024	852420	902121	915047	926129	928571	940825	955020	972256	982625
771454	772172	800363	813266	852443	902128	915055	926219	928734	941036	958243	972258	982625
771462	772285	800385	815061	856062	902791	915085	926238	928819	941473	958292	972367	982625
771463	772780	800458	816085	856142	903020	915086	926239	928881	941629	958407	972450	982625
771493	773421	800462	816380	856257	903372	915110	926348	930216	941837	958449	972530	982625
771499	773430	801207	816437	856491	903609	915137	926392	930243	941865	958532	972545	982625
771503	773439	801273	816503	856564	903755	915158	926400	930296	941945	958552	972591	982625
771529	773447	801327	816559	871415	903841	917831	926464	930349	941971	958567	972600	982625
771534	773474	801343	820200	871469	903870	917867	926508	930352	945356	958568	972616	982625
771536	773478	801486	820902	871520	903877	917929	926518	931328	945442	958598	972736	982625
771594	775220	801535	823102	882125	903952	918110	926539	931340	945610	958618	972828	982625
771628	775232	801579	827519	891296	904053	918260	926576	931349	945659	958641	972849	982625
771652	775240	802035	833200	891301	904149	918511	926602	931383	945672	958669	972865	982625
771676	775254	802042	833602	891332	904174	918737	926637	931407	945776	960042	972931	982625

UNITED STATES POSTAL SERVICE
475 L'ENFANT PLAZA SW
WASHINGTON DC 20260-1571

OFFICIAL BUSINESS

PENALTY FOR PRIVATE USE
TO AVOID PAYMENT OF POSTAGE, \$300

FIRST-CLASS MAIL
POSTAGE & FEES PAID
USPS
PERMIT NO. G-10

FIRST-CLASS

Always include your mailing label with any change to a current subscription.

■ Postal Service Orders	■ Public Orders
<p>1. Missing Issues: To order copies not received in regular distribution, telephone the materiel distribution center at: Comm. (908) 707-4200 / PEN (908) 707-4200</p> <p>2. Single Copies (back to 1 year): To order additional copies, send Form 7380, <i>MDC Supply Requisition</i>, to: MATERIEL DISTRIBUTION CENTER US POSTAL SERVICE 152 US HWY 206 S SOMERVILLE NJ 08877-9998</p> <p>3. Address and Quantity Changes: Complete the form below and send this entire page with the mailing label to: DOCUMENT CONTROL DIVISION US POSTAL SERVICE 475 L'ENFANT PLAZA SW RM 2800 WASHINGTON DC 20260-1571</p>	<p>1. Mail Payment To: SUPERINTENDENT OF DOCUMENTS US GOVERNMENT PRINTING OFFICE 710 N CAPITOL ST NE WASHINGTON DC 20402-9371 Subscription Orders: (202) 783-3238 Subscription Problems: (202) 512-2303 FAX: (202) 512-1356</p> <p>2. Single Copies (back to 16 issues): Domestic Addresses, \$2.25; International Addresses, \$2.81. Complete the form below and send this entire page to the above address.</p> <p>3. Subscription: Domestic Addresses, \$63 per year; International Addresses, \$78.75 per year. Complete the form below and send this entire page to the above address.</p> <p>4. Address and Quantity Changes: Complete the form below and send this entire page with the mailing label to the above address.</p>

■ ORDER / CHANGE-OF-ADDRESS FORM FOR POSTAL BULLETIN

Postal facility, company, or personal name	<input type="checkbox"/> Send _____ additional copies of Bulletin # _____ dated _____. Total amount \$ _____										
Attention line (if needed)	<input type="checkbox"/> Change the quantity of my subscription. Current quantity _____ New quantity _____										
Address number, street, city, state, ZIP Code, and country (if needed)	<input type="checkbox"/> Enter my annual subscription (for public orders). Number of subscriptions _____ Total amount \$ _____										
<input type="checkbox"/> Change of address Include the mailing label showing your former address.	Method of payment <input type="checkbox"/> GPO deposit account <table border="1"><tr><td></td><td></td><td></td><td></td><td></td><td></td><td></td><td></td><td></td><td></td></tr></table>										
Person to contact	<input type="checkbox"/> Mail check/money order payable to: Superintendent of Documents US Government Printing Office 710 N Capitol St NE Washington DC 20402-9371										
Daytime telephone (area code and number) <input type="checkbox"/> Check if PEN	<input type="checkbox"/> Visa <input type="checkbox"/> MasterCard <table border="1"><tr><td>VISA</td><td>MasterCard</td></tr></table> Credit card number _____ Expiration date _____	VISA	MasterCard								
VISA	MasterCard										
	Signature _____										

Effective Periods: *Postal Bulletin* articles are in effect for 1 year, unless articles change the text of permanent directives or unless otherwise specified.
Distributions: The U.S. Postal Service distributes the *Bulletin* to all postal facilities; the U.S. Government Printing Office, to all public subscribers.
Indexes: Quarterly indexes for *Bulletin* articles appear in January, April, July, and October. A complete annual index appears early the following year.



Recycled Paper