

P1.3  
21764



# postal bulletin

Published Since March 4, 1880 JUL 6 1990

PB 21764—May 31, 1990—28 Pages

## Radioactive Materials **DEPOSITORY** Unit of Issue and Returns Policy

Publication 6, *Radioactive Materials*, has been revised. Because of corrections and changes in requirements, the previous edition of this publication, dated May 1989, must be destroyed. The revision, dated March 1990, is available through the materiel distribution centers, using Form 7380, *MDC Supply Requisition*.  
—Rates and Classification Dept., 5-31-90.

### Employee Medical Folder

The new Postal Service employee medical folder (PSEMF), Item Number PSIN 067, is now available. Medical personnel may order the folders from the materiel distribution centers using Form 7380, *MDC Supply Requisition*. Personnel must use the new folders to maintain the medical records of all employees hired after January 1, 1990. In addition, the medical records of employees separating from the USPS after January 1, 1990, must be transferred to PSEMFs before they are sent for long-term storage (the retention period for employee medical records is the duration of employment plus 30 years).

Procedures are being developed for the transmission to and storage of PSEMFs of separating employees at the National Personnel Records Center in St. Louis, MO (as are Postal Service official personnel folders (PSOPFs) currently). In the meantime, medical personnel should maintain PSEMFs for separated employees on site, separately, in lockable file drawers set aside for this purpose, to safeguard these records against unauthorized access.

A future **POSTAL BULLETIN** will include the PSEMF transmission and storage procedures. The next revision of Handbook EL-806, *Health and Medical Service*, will also include them.  
—Employee Relations Dept., 5-31-90.

### DMM Notice

### COD Check Acceptance Policy


Effective with **DOMESTIC MAIL MANUAL** Issue 36 (9-16-90), section 914.52 will be revised to change the USPS policy on identification requirements for personal checks issued in payment of COD articles. This change reflects the check acceptance procedures in Handbook F-1, *Post Office Accounting Procedures*, as revised in **POSTAL BULLETINS** 21708 (1-19-90) and 21759 (3-22-90).  
—Rates and Classification Dept., 5-31-90.

When ordering supplies, forms, and directives from materiel distribution centers (MDCs), it is imperative that the quantities requested match the unit of issue (*dozen, each, rolls, boxes, cartons, etc.*). Unit of issue information for materiel stocked at the MDCs is available in Publication 24, *Supply Catalog*, and Publication 223, *Directives and Forms Catalog*. Using an incorrect unit of issue may result in excessive quantities received by the requisitioner with subsequent requests for returns to MDCs.

All requested returns, whether for excess materiel or for materiel that has become obsolete, should comply with established return procedures outlined in Publication 24 and Handbook AS-701, *Materiel Management*, part 353. Obtain direction by writing to the wholesale commodity inventory manager (supplies, equipment, or repair parts) at:

NATIONAL INVENTORY CONTROL CENTER  
INVENTORY OPERATIONS BRANCH  
TOPEKA KS 66624-9995

Report erroneous shipments by contacting the appropriate servicing MDC. Offices returning stock to the MDCs without prior authorization from the Inventory Operations Branch will not receive credit for returns.  
—Procurement and Supply Dept., 5-31-90.

 **Annual Index in PB 21756, 2-8-90.**  
**Latest Index in PB 21760, 4-5-90.**

### CONTENTS

	Page
25-Cent American Olympians Commemorative Stamps.....	11
APO/FPO Changes.....	20
Auxiliary Rural Carrier Time Certificate.....	3
Bulk Business Mail Over 1 Ounce ( <i>DMM Notice</i> ).....	11
COD Check Acceptance Policy ( <i>DMM Notice</i> ).....	1
DMM Mail Alert.....	11
Directives Update.....	2
Domestic Orders.....	2
EMS—Poland.....	11
Employee Medical Folder.....	1
Foreign Order No. 296.....	20
Forms Update.....	19
Hand Presses for Sealing Postage Meters and Mail Bags.....	19
International First Flight Cachets.....	18
Invalid Express Mail Corporate Account Numbers.....	24
Lobby Displays/Promotions for June 1990.....	17
Mail Alert.....	12
Minimum Purchase of Coil Stamps: Plate Number.....	20
Missing Children Poster.....	9
Missing Money Orders—Canadian.....	23
Missing Money Orders—U.S.....	21
Post Office Changes Number 3.....	13
Postal Quarter III Philatelic Products Report ( <i>Correction</i> ).....	19
Radioactive Materials.....	1
Stamp Poster 90-17 ( <i>Isaac Royall House Postal Card</i> ).....	7
Time and Attendance ( <i>Handbook F-21/F-22 Revisions</i> )....	4
Unit of Issue and Returns Policy.....	1
Withholding of Mail Orders.....	19

**DIRECTIVES UPDATE**

This update lists all new, revised, and obsolete directives since POSTAL BULLETIN 21762, May 3, 1990. See Publication 223, *Directives and Forms Catalog*, for ordering instructions. In the list of new directives, a column has been added to indicate the USPS/public supply source as defined in parts 137 and 138, Publication 223. This list also indicates if the new directive rescinds another. The revised list shows the oldest usable date, and the obsolete list indicates if and by what the directive was replaced.

**New Directives**

Document and date	Title	Supply source: USPS/public
HBK DM-107-A, 03-90	Manifest Mailing System (MMS), First- and Third-Class Letter-Size Mail.	MD/NA
HBK EL-701-B, 06-89	New Employee Training for Maintenance Employees (replaces HBK P-23, 6-1-80).	MD/NA
MI AS-530-90-5, 04-12-90	Preventive Maintenance for Mail Processing Equipment (replaces MI AS-530-84-9, 04-06-84).	MD/MDCE
MI AS-710-90-4, 03-29-90	Contracting for Consultant or Study Services (replaces MI AS-710-89-15, 10-17-89).	MD/H
NOT 275, 05-90	Standard Training Program for Window Clerks.	H/NA

**New Directives--Continued**

Document and date	Title	Supply source: USPS/public
PUB 82-A, 12-89	INTELPOST Service Directory and User's Guide (replaces NOT 82-A, 1-88).	MD/PF
TAG 177, 02-90	Direct Transfer .....	MD/NA

**Revised Directives**

Document and date	Title	Oldest usable date
POS 26, 03-90	Mail Bomb Indicators.....	11-89
PUB 6, 03-90	Radioactive Materials .....	03-90

**Obsolete Directives**

Document and date	Title	Obsolete date
MI AS-530-84-9, 04-06-84	Preventive Maintenance for Mail Processing Equipment (replaced by MI AS-530-90-5, 04-12-90).	04-12-90
MI AS-710-89-15 10-17-89	Contracting for Consultant or Study Services (replaced by MI AS-710-90-4, 03-29-90).	03-30-90
NOT 82-A, 1-88	INTELPOST Service Directory and User's Guide (replaced by PUB 82-A, 12-89).	.....
POS 70, 07-84	INTELPOST Facsimile Service (not replaced).	03-01-90

—Office of Information Services, 5-31-90.

**DOMESTIC ORDERS**

*False Representation.* Enforced by postmasters at cities listed.

State/city	Name covered	Product
AL, Huntsville 35806-3556.....	Steve Smith or Skywatch, 1019-A Old Monrovia Rd., Suite 105.	The delivery of merchandise.
IL, Chicago, 60611-3111.....	Greater Chicagoland Yellow Pages and Advertising Department-Yellow Pages, 612 N. Michigan Ave., Suite 217.	Solicitations for directory advertising.
TX, Arlington 76011-6291.....	GTP Marketing & Telstar Marketing, 803 Stadium Drive, E., Suite 109, and.	A lottery scheme.
TX, Arlington 76006-6122.....	H.S. Marketing, Inc., 1201 N. Watson Rd.	A lottery.
TX, Arlington 76012-3475.....	C & L Industries, 3008 West Division, Suite C .....	

—Judicial Officer, 5-31-90.

**Pile sacks evenly to avoid damage and to conserve space**



Handbooks F-21/F-22 Revisions

## TIME AND ATTENDANCE

Requirements for recording daily clock rings are revised. Forthcoming revisions will include the following changes to Handbook F-21, *Time and Attendance*, subchapter 140, and Handbook F-22, *PSDS Time and Attendance*, part 212.

### 140 Recording Time

#### 141 Who Must Record Time (see Exhibit 141)

##### 141.1 Employees Who Are Required to Use a Time Clock

**141.11** References to time clocks are also applicable to employee badge readers (EBRs). References to clock rings include time entries that are recorded electronically, mechanically on the time card (using a time clock), or manually (written in).

**141.12** All bargaining unit and casual employees are required to use time clocks (if available) to record clock rings on their time cards. An exception to this applies to RSC N, levels 19 and above, employees who may write in their clock rings at the discretion of local management (see 141.24 and Chapter 5 for rural carrier timekeeping procedures).

**141.13** If time clocks are not available, these employees must write in their clock rings each day, in blue or black ink, in the clock ring spaces on the back of the time card (see Exhibit 141.13).

**141.14** In certain situations, such as travel or assignment away from the time card location, the employee's supervisor may write in the daily clock rings for the employee. In such cases, the employee must submit a completed Form 1234, *Utility Card*, and the data must be verified to ensure compatibility with the previously submitted Form 1230 A, B, or C. Form 1234 must be filed with the original Form 1230 A, B, or C.

##### 141.2 Employees Who Are Required to Record Daily Clock Rings

**141.21** Employees who are required to record daily clock rings, but who at the discretion of local management may record them electronically, mechanically (using a time clock), or manually (written in), include:

- a. FLSA-exempt employees whose schedule and position includes eligibility for premium pay.
- b. Nonexempt EAS employees (excluding casuals).
- c. Postal data center (PDC) craft (RSC N), levels 19 and above.

**141.22** When daily clock ring entries are written in, they should be written in blue or black ink, in the clock ring spaces on the back of the time card (see Exhibit 141.13).

**141.23** In certain situations, such as travel or assignment away from the time card location, the employee's supervisor may record the employee's daily clock rings.

**141.24** Rural carriers must write in daily entries on Form 4240, *Rural Carrier Trip Report*, which is the official timekeeping document for rural carriers. Totals are then transcribed to Form 1314, *Regular Rural Carrier Time Certificate*, or 1314-A, *Auxiliary Rural Carrier Time Certificate*, by the timekeeper or supervisor, before either form is dispatched to the DDE/DR site for processing. The rural carrier must sign Form 4240 and initial Form 1314 or 1314-A (see Chapter 5 for more information about rural carriers).

**141.25** Postmasters in CAG L offices are not required to record time on a time card. When they take leave or otherwise utilize a replacement, they will use Form 1377, *Request for Payment of Leave Replacement and/or Postmaster (CAG L) Overtime* (see part 147).

##### 141.3 Employees Who Are Not Required to Record Daily Clock Rings

**141.31** The following employees are not required to record daily clock rings:

- a. PCES employees.
- b. Postal inspectors.
- c. Attorneys (RSC U).
- d. Structured management development (SMD) management interns/trainees (RSC J).
- e. FLSA-exempt employees in grades EAS 24 and above.
- f. Other FLSA-exempt employees whose schedule and position *does not* include premium pay eligibility. (Certain employees in this category are eligible for overtime during the designated Christmas period. These employees must record daily clock rings for those weeks in which overtime may be earned.)

**141.32** Only leave entries are required for the above employees; these leave entries must be entered by the timekeeper, as shown in Exhibit 141.32. All leave entries must be supported by an approved Form 3971, *Request for or Notification of Absence*. The leave entries are necessary to charge the leave to the proper accounts and to maintain correct leave balances. FLSA-exempt employees can be identified by the E on their preprinted time cards in the unlabeled box to the right of the Name box.

##### 141.4 Employees Who Are Required to Sign Their Time Cards or Other Approved Time and Attendance Documents

**141.41** The following employees are required to sign their time cards or other approved time and attendance documents:

- a. RSC N, levels 19 and above, who write in their clock rings.
- b. FLSA-exempt employees, levels 23 and below, who write in their clock rings.

## TIME AND ATTENDANCE—Continued

c. All FLSA-nonexempt EAS employees (excluding casuals) who write in their clock rings.

**141.42** Employees who are required to sign their time cards must do so in the space provided on the front of the time card (this is discussed more fully in Chapter 6). They must do this each week, or as soon as possible after the end of each week. If the employee is not available to sign the time card, follow the procedures below:

a. If the employee is on travel or assignment away from the time card location and is not available to sign the time card, the employee's supervisor must verify the accuracy of the entries before the time card is dispatched to the data entry site for processing. The supervisor must obtain the employee's signature on the time card when the employee returns.

b. As an alternative, the employee may sign Form 1234. In this case, the completed Form 1234 must be submitted and the data verified to ensure compatibility with the previously submitted Form 1230 A, B, or C. The employee may also sign a copy of the original Form 1230 A, B, or C. The document containing the employee's signature, whether a Form 1234 or a copy of the original Form 1230 A, B, or C, must be filed with the original Form 1230 A, B, or C.

### Exhibit 141 Recording Time

This exhibit shows which employees are required to record daily clock rings and sign their time cards. *All* employees must record leave hours on Form 3971 and enter the appropriate leave hours on their time cards or other approved media (such as timesheets or employee badge readers).

	Daily clock rings required	Must sign time card
<b>FLSA exempt</b>		
PCES employees .....	N	N
Postal inspectors .....	N	N
Attorneys (RSC U) ..	N	N
SMD management interns/trainees (RSC J).	N	N
<b>EAS employees</b>		
Level 24 and above.	N	N
Level 23 and below.	N <sup>1,2</sup>	N <sup>3</sup>
<b>FLSA nonexempt</b>		
EAS employees .....	Y <sup>2</sup>	N <sup>3</sup>
CAG L postmasters/leave replacements.		(see section 147)
Bargaining unit employees <sup>4</sup>	Y <sup>5</sup>	N
<b>PDC craft employees (RSC N)</b>		
Level 19 and above.	Y <sup>2</sup>	N <sup>3</sup>

	Daily clock rings required	Must sign time card
Level 18 and below.	Y <sup>5</sup>	N
Rural carriers .....		(see chapter 5)

1. If schedule and position includes premium eligibility, daily clock rings are required.
2. When daily clock rings are required, they may be recorded electronically, mechanically on the time card (using a time clock) or manually (written in) at the discretion of local management.
3. If the time is written in, the employee must sign the time card.
4. Also includes casual employees.
5. These employees are required to use a time clock; if a time clock is not available, clock rings must be written in.

### Exhibit 141.13 Example of Clock Rings That Have Been Manually Recorded

This time card shows how time is manually recorded. Note that all time has been converted to hours and hundredths of an hour by using Appendix A-1.

### Exhibit 141.32 Example of a Properly Completed Time Card for Employees Who Are Required to Record Leave Only

This is an example of a properly completed time card for employees who are not required to record daily clock rings. The leave hours are entered in the appropriate column in hours and hundredths (i.e., 8 hours is entered as 08.00). The timekeeper must initial all leave entries.

### TIME AND ATTENDANCE—Continued

#### Handbook F-22: PSDS Offices

#### 212 Recording Time (and Related Activities)

**212.1 Time Recording (Clock Rings) for Bargaining Unit Employees.** All bargaining unit and casual employees are required to use time recording devices, if available. If time recording devices are not available, these employees are required to record their clock rings on manual input forms.

#### 212.2 Time Recording for EAS Employees

**212.21** Certain employees are not usually required to use a time recording device; however, they may be directed to do so at the discretion of local management.

**212.22** Employees not required to use a time recording device but who are required to record clock rings include:

a. FLSA-exempt employees whose time is not automatically generated by the system (variable scheduled employees). The time and attendance system does not require clock rings for any EAS-exempt employee except a variable scheduled employee. However, hours will not be credited to the MODS if daily clock rings are not recorded into the system.

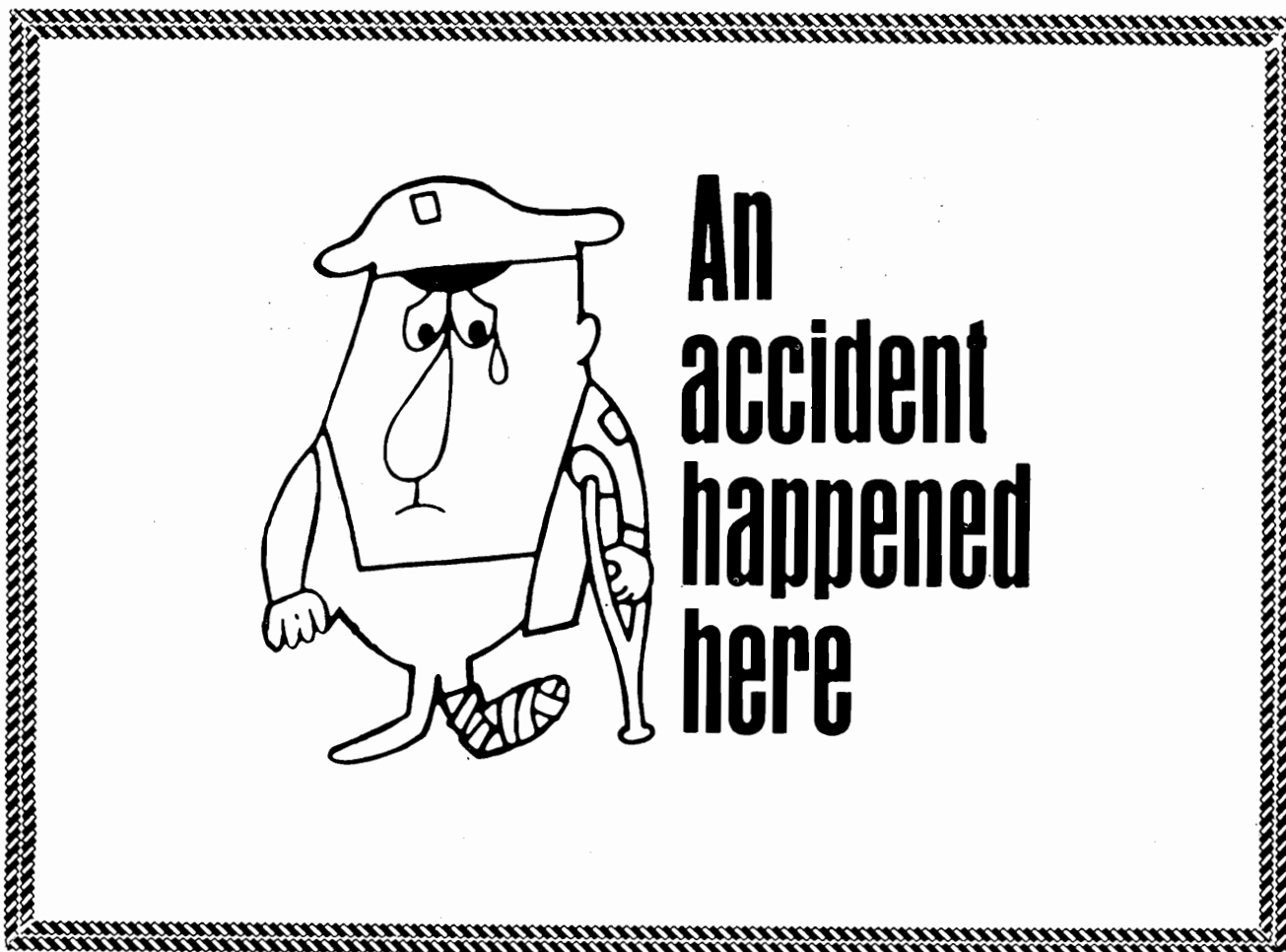
b. All nonexempt EAS employees (excluding casuals).

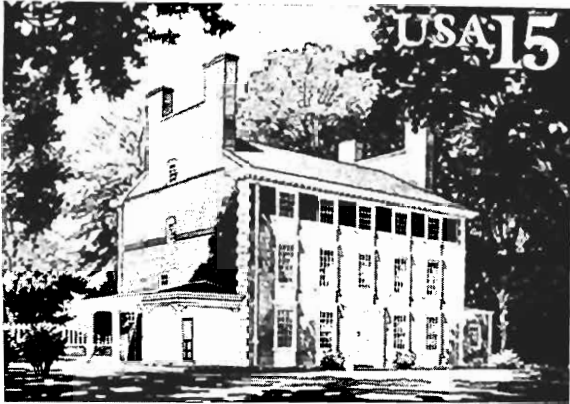
**212.3 Time Recording for Employees in a Travel Status.** Employees traveling away from their home office or on loan to another office should record their clock rings daily on a Form 1260, 1261, or 1262. Either daily, or no later than the last working day of each week, these employees should call in their time to the timekeeper or Data Collection Site (DCS) with the supporting documentation to follow.

**212.4 Time Recording for Employees Not Required to Record Clock Rings.** The following employees are not required to record daily clock rings:

- a. PCES employees.
- b. FLSA-exempt employees in grades EAS 24 and above.
- c. FLSA-exempt employees who have automatic MODS operation numbers and separate reporting facility coded in the step field.

**212.5 Leave Recording.** All employees must record leave hours on a Form 3971, and the appropriate leave hours must be entered into the system. The leave entries are necessary to charge the leave to the proper accounts and to maintain correct leave balances.—*Dept. of the Controller, 5-31-90.*





Copyright U.S. Postal Service 1990

Issue Date: June 16, 1990  
 First Day City: Medford, MA  
 Designer: Frank Constantino,  
 Winthrop, Massachusetts  
 Art Director and Typographer:  
 Richard Sheaff, Design Coordinator,  
 Citizens' Stamp Advisory Committee  
 Postal Service Manager:  
 Joe Brockert, Program Manager for  
 Philatelic Design  
 Printing Process: Offset lithography,  
 Government Printing Office  
 Colors: Yellow, magenta, cyan, and black  
 Size: 3.5 x 5.5 in or 89.0 x 139.5 mm  
 Copyright: USPS 1990  
 Item Number: 2209

## Isaac Royall House Postal Card

The Postal Service honors the Isaac Royall House on a 15-cent Historic Preservation Series postal card issued June 16 at the Royall House in Medford, Massachusetts. The card features a pastel image of the house's main facade drenched in sunlight and surrounded by lush greenery. The Royall House is one of the finest examples of Georgian design in colonial America and is a Registered National Historic Landmark.

The Royall estate was used by colonists during the American Revolution as the headquarters for General John Stark. George Washington also conferred with several of his generals at the house during the war.

Procedures for ordering first-day cancellations follow:

*Customers Providing Stationery.* Customers who provide their own cards will receive preferential serv-

ice. They should address cards at least  $\frac{5}{8}$  inch from the bottom. Customers may also affix uncanceled stamps issued on or before June 16. The Postal Service will return without cancellation any cards bearing stamps issued after that date. Requests must be postmarked by July 16 and addressed: Customer Supplied Cards, Postmaster, Medford, MA 02155-9991. No remittance is required.

*Postal Service Providing Stationery.* Customers should provide a peelable return label for each postal card. The price is 15 cents per card, and the Postal Service accepts personal checks in the exact amount up to the limit of 50 items. Customers should not send cash or postage stamps. Orders must be postmarked by July 16 and addressed: Isaac Royall House Postal Card, Postmaster, Medford, MA 02155-9992.

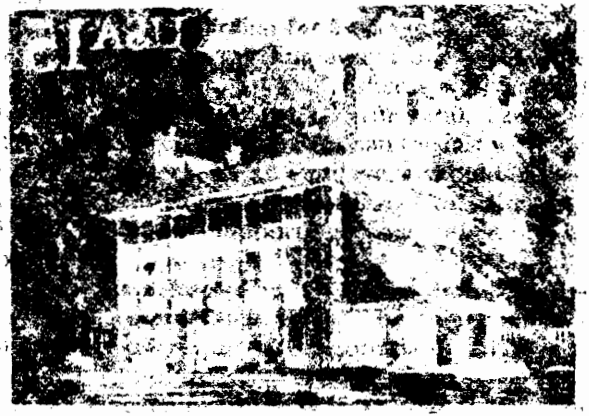


A *Philatelic Catalog*, listing all available stamps and other philatelic items, is available here or from the Philatelic Sales Division, Box 449997, Kansas City, MO 64144-9997.

USPS Stamp Poster 90-17  
 Remove after July 16

Department of the Post

Isaac Royal House Postal Card  
 1990  
 25¢  
 100% Recycled Paper  
 Printed in the USA  
 Copyright © 1990  
 U.S. Postal Service  
 Item Number 2209



Copyright U.S. Postal Service 1990

# Isaac Royal House Postal Card

The Postal Service honors the Isaac Royal House, a historic landmark in York, Pennsylvania. The house was built in 1785 and is one of the finest examples of Federal architecture in the country. It is a National Historic Landmark and is listed on the National Register of Historic Places. The house is a fine example of Federal architecture and is a National Historic Landmark.

The Postal Service honors the Isaac Royal House, a historic landmark in York, Pennsylvania. The house was built in 1785 and is one of the finest examples of Federal architecture in the country. It is a National Historic Landmark and is listed on the National Register of Historic Places. The house is a fine example of Federal architecture and is a National Historic Landmark.

The Postal Service honors the Isaac Royal House, a historic landmark in York, Pennsylvania. The house was built in 1785 and is one of the finest examples of Federal architecture in the country. It is a National Historic Landmark and is listed on the National Register of Historic Places. The house is a fine example of Federal architecture and is a National Historic Landmark.

The Postal Service honors the Isaac Royal House, a historic landmark in York, Pennsylvania. The house was built in 1785 and is one of the finest examples of Federal architecture in the country. It is a National Historic Landmark and is listed on the National Register of Historic Places. The house is a fine example of Federal architecture and is a National Historic Landmark.



A Philatelic Catalog listing all available stamps and other philatelic items is available here or from the Philatelic Sales Division, Box 402977, Kansas City, MO 64144-2977.



**MAY 1990**

# Have you seen any of these children?

Participate in the NALC/USPS Child Alert Program. Tear out this page and carry it with you. If you have information on any of these missing children, tell your postal supervisor.



**Aaron Mitchell Anderson**  
 Born: 6-23-87  
 Date Missing: 4-7-89  
 From: Pine City, MN



**Christopher Milton Dansby**  
 Born: 3-30-87  
 Date Missing: 5-18-89  
 From: New York City, NY



**Amber Kerstine Davis**  
 Born: 8-7-86  
 Date Missing: 3-5-89  
 From: Vallejo, CA



**Heather Susan Davis**  
 Born: 5-9-84  
 Date Missing: 3-5-89  
 From: Vallejo, CA



**Conner Lee Gibson**  
 Born: 5-19-88  
 Date Missing: 1-22-90  
 From: Austin, TX



**Karen Ann Spencer**  
 Born: 1-17-72  
 Date Missing: 12-29-89  
 From: Miami, OH

**Please Call the National Center for Missing and Exploited Children—  
 HOT LINE 1-800-843-5678**

#### Missing Children Poster Display Instructions

Please display this poster prominently on bulletin boards in retail lobbies of main post offices, classified stations, and branches. Please remove and discard previous versions. At their option, operators of contract postal units also may display this poster.

Companion posters, authorized for display on bulletin boards maintained by employee organizations, appear periodically in *The Postal Record*, a publication for members of the National Association of Letter Carriers.

This poster is published in cooperation with the National Center for Missing and Exploited Children, the United States Department of Justice, and the National Association of Letter Carriers. Information appearing on this poster is selected solely by the National Center for Missing and Exploited Children. For policy and information on Postal Service support in efforts to recover missing children, see POSTAL BULLETIN 21536, page 1, October 17, 1985.

Missing Children Posters are available from the U.S. Postal Service *only* through periodic issues of the POSTAL BULLETIN.

## 25-Cent American Olympians Commemorative Stamps

The 25-cent American Olympians stamps go on sale July 6 in Minneapolis, MN. Featured gold-medal athletes include Jesse Owens, Ray Ewry, Hazel Wightman, Eddie Eagan, and Helene Madison. The 35-stamp pane includes biographical copy on a tab adjacent to one row of stamps.

### Do Not Place on Sale Before July 7, 1990

A future issue will include collector information.

*Supply.* All post offices will receive new, standard automatic distribution quantities for a 35-subject commemorative stamp as follows:

Offices receiving regular stock in these quantities	Will receive the 25-cent Olympians stamps in these quantities
25,000	17,500
50,000	52,500
75,000	70,000
100,000	87,500
125,000	87,500
250,000	262,500
375,000	350,000

Authorized philatelic centers will receive an automatic distribution as follows:

Offices receiving four-position stock in these quantities	Will receive the 25-cent Olympians stamps in these quantities
20,000	14,000
40,000	28,000
60,000	52,500
125,000	87,500
250,000	262,500
375,000	350,500

*Since a private contractor (American Bank Note Company) printed this stamp issue, the Bureau of Engraving and Printing will not honor supplemental requisitions for Item 4481.*

Limited quantities of this stamp will be shipped to regional accountable paper depositories (RAPDs) for filling supplemental orders. Stamp distribution offices (SDOs) requiring additional stamps may order them from their RAPDs using separate Forms 17-A, *Accountable Items Requisition From Stamp Distribution Office*. All other post offices requiring additional stamps should immediately requisition them from their SDOs on *separate* Forms 17-A.

Before requisitioning additional stock, all post offices should consider that they must deplete the stock before September 6, 1990, except at authorized philatelic centers.

—*Philatelic and Retail Services Dept., 5-31-90.*

### DMM Notice

## Bulk Business Mail Over 1 Ounce

Effective with DOMESTIC MAIL MANUAL Issue 36, 9-16-90, Exhibit 159.151d, Treatment of Undeliverable Third-Class Bulk Business Mail Weighing Over 1 Ounce (Forwarded Up to 12 Months), under Address Correction Requested, the USPS action will be changed to read as follows:

No forwarding service is provided. Address correction is provided, or reason for non-delivery via Form 3547 or 3579; charge the address-correction fee.

The addition of the words "or reason for non-delivery" will clarify the USPS action required for handling this type of mail.

—*Office of Address Information Systems, 5-31-90.*

## DMM Mail Alert

DOMESTIC MAIL MANUAL Issue 35, effective June 17, 1990, will be deposited the week of May 28, 1990. It is a fourth-class mailing, 117,005 pieces, distributed nationwide, sorted in ZIP Code order by sectional center facilities.

—*Office of Information Services, 5-31-90.*

## EMS—Poland

POSTAL BULLETIN 21757, dated February 22, 1990, contained an article on page 19 announcing the introduction of Express Mail International Service (EMS) to Poland. In the Areas Served section of that article, the postal codes listed for Bytom, Gdansk, and Gdynia were in error.

EMS is available to 18 locations in Poland. The following is a list of these locations and their correct postal codes:

City	Postal Code
Bytom .....	41-900-41-999
Chorzow .....	41-500-41-599
Gracow .....	30-001-31-999
Gdansk .....	80-009, 80-017, 80-018, 80-020-80-179, 80-200-80-297, 80-300-80-679, 80-700-80-900, 80-917, 80-921, 80-922, 80-940
Gdynia .....	81-001-81-699, 81-900-81-999
Gliwice .....	44-100-44-199
Katowice .....	40-000-40-999
Lodz .....	90-000-94-999
Lublin .....	20-000-20-999
Olsztyn .....	10-000-10-999
Poznan .....	60-000-61-999
Rybnik .....	44-200-44-209
Sic- mianowice Slaskie	41-100-41-199
Sopot .....	81-700-81-899
Szczecin .....	70-000-71-999
Warsaw .....	00-001-04-999
Wroclaw .....	50-001-54-999
Zabrze .....	41-800-41-899

—*Marketing Dept., 5-31-90.*

## MAIL ALERT

The mailings below will be deposited in the near future. Offices should attempt to honor the requested home delivery dates, but not at an additional expense. Mailers wishing to participate in these alerts, for mailings of one million pieces or more, should contact the National Accounts Division at (202) 268-2207, by the 15th of the month preceding the month of the requested delivery dates.

Title on mailings	Class and type of mail	Requested delivery dates	Number of pieces (millions)	Distribution	Presort level	Comments
House of Fabrics, June Clearance.	Third .....	May 30- June 1.	2.0	Nationwide ...	CARRT, 5-digit basic.	Self-mailer, 8½ × 11 in, origin: Arizona.
FEDCO Reporter .....	Third .....	June 1-4.....	2.0	So. CA .....	CARRT, 5-digit.	Origin, R.R. Donnelley & Sons, Torrance, CA.
MAY Company, June 15-Hour Sale.	Third .....	June 1-4.....	1.1	So. CA and Las Vegas.	CARRT.....	Origin: R.R. Donnelley, Torrance, CA.
Buick Winning' Putt Sweepstakes.	Third, Flats...	June 1-8.....	5.5	Nationwide ...	CARRT, 5-Digit	9 × 12 in envelope, Buick \$250,000 Sweepstakes, Berea, OH.
Sears KT—Refrigeration....	Third, Bulk Flats.	June 1-8.....	5.0	Nationwide ...	CARRT.....	8 × 10¾ in piece.
Jane Tucker Supermarket of Savings, Active Adults Edition.	Third, Letters.	June 1-15.....	12.5	Nationwide ...	CARRT.....	6 × 9 in blue/white envelope, time-sensitive coupons.
Jane Tucker Supermarket of Savings, Preschool Edition.	Third, Letters.	June 1-15.....	7.0	Nationwide ...	CARRT.....	6 × 9 in blue/white envelope, time-sensitive coupons.
Sears Retail.....	Third, Flats...	June 4-6.....	10.0	Nationwide ...	CARRT, SEC-SEG.	Or Current Resident endorsement.
Grit Sweepstakes .....	Third .....	June 4-8.....	1.1	Nationwide ...	CARRT, 5-digit basic.	Letter size #10 window envelope.
Saks Fifth Avenue, July Folio.	Third, Flats...	June 11-13....	1.5	Nationwide ...	CARRT.....	7 × 10½ in piece, Case-Hoyt, Rochester, NY.
MAY Company, June Summer Sale Catalog.	Third .....	June 13-15....	1.0	So. CA and Las Vegas.	CARRT, 5-digit.	Origin: R.R. Donnelley & Sons, Torrance, CA.
'90 Best Splash Into Summer with Savings.	Third .....	June 13-16....	8.0	Nationwide ...	CARRT, ZIP plus 4, St sequence.	Mail is verified and accepted in-plant, BMAU Brown Printing, Franklin, KY 42134.
JC Penney, Late Summer Sale.	Third, Catalog.	June 14-16....	8.0	Nationwide ...	CARRT.....	RRD Spartanburg, SC.
Sears, JL-MORE .....	Third, Bulk Flats.	June 15-22....	11.5	Nationwide ...	CARRT.....	8 × 10¾ in piece.
Sears, H/Y Home/Style .....	Fourth, BPM.	June 15-July 11.	10.7	Nationwide ...	CARRT.....	Origin: RRD-Chicago.
Toyota Do-It-Yourself Guide.	Third, Flats...	June 18-23....	1.3	Nationwide ...	CARRT, 5-digit.	8½ × 11 in self-mailer, Origin: R.L. Polk, Berea, OH.
Billy Graham Letter .....	Third, Letter.	June 18-29....	1.6	Nationwide ...	CARRT, 5-digit.	3¾ × 7½ in envelope, from Minneapolis, MN.
Mary Kay Cosmetics, Summer Shape-up.	Third, Flats...	June 18-29....	3.2	Nationwide ...	CARRT, 5-digit.	The carrier envelope is white with a double window, 8½ × 11-14 in. It will carry the Summer Shape-up title.
Radio Shack's Saving Sell-a-bration Sale.	Third, Flats...	June 19-21....	17.0	Nationwide ...	CARRT, 5-digit basic.	9¾ × 11¾ in, 24 pages.
JC Penney, Splish Splash Sale.	Third, Flats...	June 20-22....	2.0	Nationwide ...	CARRT.....	MSP Pittsburgh, PA.
Ben Franklin Stores, Summer Specials.	Third, Letters.	June 21-23....	1.0	Nationwide ...	CARRT.....	Origin: Portland, OR, BMAU, 24 pages, 5½ × 5½ in coupon book, orange tags with in-home dates and bundle sheets with in-home dates.
Sears, FH-MORE.....	Third Class...	June 22-29....	5.9	Nationwide ...	CARRT.....	8 × 10¾ in piece.
Decision Magazine .....	Third, Flats...	June 26-30....	1.6	Nationwide ...	CARRT, 5-digit.	8¼ × 10¾ in, 44-page tabloid, from Minneapolis, MN.
JC Penney, Big Men's Sale.	Third, Catalog.	June 28-30....	1.0	Nationwide ...	CARRT.....	RRD Spartanburg, SC.
JC Penney, Great American Perm Sale.	Third, Flats...	June 30- July 3.	1.5	Nationwide ...	CARRT.....	MSP Pittsburgh, PA.

**POST OFFICE CHANGES NUMBER 3**

Data	Finance No.	ZIP Code	State	Name of Post Office	County/Parish	Name of Station, Branch, or Unit	Unit Type	Effective Date	Comments/Action
OLD NEW	034440 034440	86411 86411	AZ..... AZ.....	Kingman ..... Kingman .....	Mohave ..... Mohave .....	Hackberry ..... Hackberry .....	Community Post Office. Place Name .....	7/31/89 7/31/89	Community post office discontinued. Retain ZIP Code. Use Hackberry, AZ 86411 as last line of address. This amends PB 21748, 10-29-89.
OLD NEW	050168 050168	91701 91737	CA ..... CA .....	Alta Loma ..... Alta Loma .....	San Bernardino..... San Bernardino.....	Main Office..... Main Office.....	Post Office..... Post Office.....	7-1-90 7-1-90	Establish a new ZIP Code for a delivery area. This action splits ZIP Code 91701. Alta Loma, CA becomes a multicoded city.
OLD NEW	052544 051938	91739 91739	CA ..... CA .....	Etiwanda ..... Rancho Cucamonga.....	San Bernardino..... San Bernardino.....	Main Office..... Etiwanda .....	Post Office..... Classified Station.....	1-13-90 1-13-90	Post office discontinued. Retain ZIP Code. Establish a new classified station in Rancho Cucamonga, CA.
OLD NEW	..... 052472	..... 92610	CA ..... CA .....	..... El Toro .....	..... Orange.....	..... Main Office.....	..... Post Office.....	..... 7-1-90	Establish a new ZIP Code for a new delivery area.
OLD NEW	052886 052886	93710 93720	CA ..... CA .....	Fresno ..... Fresno .....	Fresno ..... Fresno .....	Woodward Park..... Woodward Park.....	Classified Station..... Classified Station.....	7-1-90 7-1-90	Establish a new ZIP Code for a delivery area. This action splits ZIP Code 93710.
OLD NEW	055958 055958	94953 94955	CA ..... CA .....	Petaluma ..... Petaluma .....	Sonoma..... Sonoma.....	Casa Grande..... Casa Grande.....	Classified Station..... Classified Station.....	7-1-90 7-1-90	Establish a new ZIP Code for post office boxes. This action changes the ZIP Code for the post office boxes at 94953.
OLD NEW	..... 056834	..... 95164	CA ..... CA .....	..... San Jose.....	..... Santa Clara.....	..... Bayside.....	..... Classified Station.....	..... 8-1-90	Establish a new ZIP Code for post office boxes. Establish a new classified station in San Jose, CA.
OLD NEW	073024 073456	81037 81040	CO..... CO.....	Farisita ..... Gardner.....	Huerfano..... Huerfano.....	Main Office..... Farisita.....	Post Office..... Place Name.....	4-7-90 4-7-90	Post office and ZIP Code discontinued. Establish a place name. Use Farisita, CO 81040 as last line of address.
OLD NEW	111980 111980	32692 32623	FL..... FL.....	Crystal River..... Crystal River.....	Citrus ..... Citrus .....	Main Office..... Main Office.....	Post Office..... Post Office.....	7-1-90 7-1-90	Establish a new ZIP Code for post office boxes. This action changes the ZIP Code for post office boxes at 32629.
OLD NEW	..... 118430	..... 34276	FL..... FL.....	..... Sarasota.....	..... Sarasota.....	..... Gulf Gate East.....	..... Classified Branch.....	..... 7-1-90	Establish a new ZIP Code for post office boxes.
OLD NEW	118895 118895	32301 32311	FL..... FL.....	Tallahassee ..... Tallahassee .....	Leon..... Leon.....	Main Office..... Main Office.....	Post Office..... Post Office.....	7-1-90 7-1-90	Establish a new ZIP Code for a delivery area. This action splits ZIP Code 32301.
OLD NEW	161544 161544	60439 60440	IL..... IL.....	Bedford Park..... Bedford Park.....	Cook..... Cook.....	Bolingbrook..... Bolingbrook.....	Classified Branch..... Classified Branch.....	7-1-90 7-1-90	Establish a new ZIP Code for a delivery area. This action splits ZIP Code 60439.
OLD NEW	176303 172783	46060 46038	IN ..... IN .....	Noblesville ..... Fishers.....	Hamilton..... Hamilton.....	Main Office..... Main Office.....	Post Office..... Post Office.....	1-1-89 1-1-89	This action transfers a portion of the deliveries from Noblesville, IN 46060 to Fishers, IN 46038. Establish city delivery in Fishers, IN.
OLD NEW	197139 192321	67121 67035	KS..... KS.....	Penalosa ..... Cunningham.....	Kingman..... Kingman.....	Main Office..... Penalosa.....	Post Office..... Place Name.....	4-28-90 4-28-90	Post office and ZIP Code discontinued. Establish a place name. Use Penalosa, KS 67035 as last line of address.
OLD NEW	197535 194983	67571 67550	KS..... KS.....	Radium..... Larned.....	Stafford..... Pawnee.....	Main Office..... Radium.....	Post Office..... Place Name.....	4-28-90 4-28-90	Post office and ZIP Code discontinued. Establish a place name. Use Radium, KS 67550 as last line of address.

**POST OFFICE CHANGES NUMBER 3—Continued**

Data	Finance No.	ZIP Code	State	Name of Post Office	County/Parish	Name of Station, Branch, or Unit	Unit Type	Effective Date	Comments/Action
OLD NEW	197436 197414	67569 67569	KS..... KS.....	Preston..... Pratt.....	Pratt..... Pratt.....	Main Office..... Preston.....	Post Office..... Community Post Office.	4-28-90 4-28-90	Post office discontinued. Retain ZIP Code. Establish a community post office. Use Preston, KS 67569 as last line of address.
OLD NEW	226690 229585	04272 04290	ME..... ME.....	Peru..... West Peru.....	Oxford..... Oxford.....	Main Office..... Main Office.....	Post Office..... Post Office.....	4-7-90 4-7-90	Post office and ZIP Code discontinued. Use West Peru, ME 04290 as last line of address.
OLD NEW	233348 233348	21701 21702	MD..... MD.....	Frederick..... Frederick.....	Frederick..... Frederick.....	Main Office..... Main Office.....	Post Office..... Post Office.....	7-1-90 7-1-90	Establish a new ZIP Code for a delivery area. This actions splits ZIP Code 21701.
OLD NEW	233744 233744	21061 21060	MD..... MD.....	Glen Burnie..... Glen Burnie.....	Anne Arundel..... Anne Arundel.....	Main Office..... Main Office.....	Post Office..... Post Office.....	7-1-90 7-1-90	Establish a new ZIP Code for a delivery area. This action splits ZIP Code 21061.
OLD NEW	240952 240952	02403 02404	MA..... MA.....	Brockton..... Brockton.....	Plymouth..... Plymouth.....	Campello..... Campello.....	Classified Station..... Classified Station.....	7-1-90 7-1-90	Establish a new ZIP Code for post office boxes. This action changes the ZIP Code for a portion of the post office boxes at 02403.
OLD NEW	240952 240952	02403 02405	MA..... MA.....	Brockton..... Brockton.....	Plymouth..... Plymouth.....	Montello..... Montello.....	Classified Station..... Classified Station.....	7-1-90 7-1-90	Establish a new ZIP Code for post office boxes. This action changes the ZIP Code for a portion of the post office boxes at 02403.
OLD NEW	247004	01546	MA.....	Shrewsbury.....	Worcester.....	Central Massachusetts.....	Mail Processing Center.	6-1-90	Establish a new ZIP Code for the Central Massachusetts Mail Processing Center, located in Shrewsbury, MA.
OLD NEW	253920	49514	MI.....	Grand Rapids.....	Kent.....	Northwest.....	Classified Station.....	7-1-90	Establish a new ZIP Code for post office boxes.
OLD NEW	254910	49019	MI.....	Kalamazoo.....	Kalamazoo.....	Westwood.....	Classified Branch.....	8-1-90	Establish a new ZIP Code for post office boxes. Establish a new classified branch in Kalamazoo, MI.
OLD NEW	267960 267960	55904 55906	MN..... MN.....	Rochester..... Rochester.....	Olmsted..... Olmsted.....	Main Office..... Main Office.....	Post Office..... Post Office.....	7-1-90 7-1-90	Establish a new ZIP Code for a delivery area. This action splits ZIP Code 55904.
OLD NEW	316200 316200	89030 89031	NV..... NV.....	North Las Vegas..... North Las Vegas.....	Clark..... Clark.....	Main Office..... Main Office.....	Post Office..... Post Office.....	7-1-90 7-1-90	Establish a new ZIP Code for a delivery area. This actions splits ZIP Code 89030.
OLD NEW	348820 342877	87576 87576	NM..... NM.....	Trampas..... Española.....	Taos..... Taos.....	Main Office..... Trampas.....	Post Office..... Place Name.....	4-14-90 4-14-90	Post office discontinued. Retain ZIP Code. Establish a place name. Use Trampas, NM 87576 as last line of address.
OLD NEW	341365 349471	87009 87009	NM..... NM.....	Cedarvale..... Willard.....	Torrance..... Torrance.....	Main Office..... Cedarvale.....	Post Office..... Place Name.....	5-15-90 5-15-90	Post office discontinued. Retain ZIP Code. Establish a place name. Use Cedarvale, NM 87009 as last line of address.
OLD NEW	361696 361696	28025 28027	NC..... NC.....	Concord..... Concord.....	Cabarrus..... Cabarrus.....	Main Office..... Main Office.....	Post Office..... Post Office.....	7-1-90 7-1-90	Establish a new ZIP Code for a delivery area. This action splits ZIP Code 28025.
OLD NEW	362912 362912	28053 28051	NC..... NC.....	Gastonia..... Gastonia.....	Gaston..... Gaston.....	West Gastonia..... West Gastonia.....	Classified Station..... Classified Station.....	7-1-90 7-1-90	Establish a new ZIP Code for post office boxes. This action changes the ZIP Code for some of the post office boxes at 20853.
OLD NEW	362912 362912	28054 28056	NC..... NC.....	Gastonia..... Gastonia.....	Gaston..... Gaston.....	Main Office..... Main Office.....	Post Office..... Post Office.....	7-1-90 7-1-90	Establish a new ZIP Code for a delivery area. This action splits ZIP Code 28054.

OLD NEW	364032 364032	28081 28083	NC NC	Kannapolis Kannapolis	Cabarrus Cabarrus	Main Office Main Office	Post Office Post Office	7-1-90 7-1-90	Establish a new ZIP Code for a delivery area. This action splits ZIP Code 28081.
OLD NEW	365176 365176	28110 28111	NC NC	Monroe Monroe	Union Union	Main Office Main Office	Post Office Post Office	7-1-90 7-1-90	Establish a new ZIP Code for post office boxes. This action changes the ZIP Code for the post office boxes at 28110.
OLD NEW	365176 365176	28110 28112	NC NC	Monroe Monroe	Union Union	Main Office Main Office	Post Office Post Office	7-1-90 7-1-90	Establish a new ZIP Code for a delivery area. This action splits ZIP Code 28110. Monroe, NC becomes a multicoded city.
OLD NEW	368712	27120	NC	Winston Salem	Forsyth	Center City	Classified Station	7-1-90	Establish a new ZIP Code for post office boxes. Establish a new classified station for Winston Salem, NC.
OLD NEW	416052 416052	18441 18446	PA PA	Nicholson Nicholson	Wyoming Wyoming	Lenoxville Lenoxville	Community Post Office Place Name	1-20-90 1-20-90	Community post office and ZIP Code discontinued. Establish a place name. Use Lenoxville, PA 18446 as last line of address.
OLD NEW	432360 432360	02816 02817	RI RI	Coventry Coventry	Kent Kent	Main Office West Greenwich	Post Office Contract Branch	7-1-90 7-1-90	Establish a new ZIP Code for a delivery area. This action splits ZIP 02816. Establish a new contract branch in Coventry, RI.
OLD NEW	450120 450120	29801 29803	SC SC	Aiken Aiken	Aiken Aiken	Summerall Summerall	Classified Station Classified Station	7-1-90 7-1-90	Establish a new ZIP Code for a delivery area. This actions splits ZIP Code 29801.
OLD NEW	451480 451480	29412 29422	SC SC	Charleston Charleston	Charleston Charleston	James Island James Island	Classified Station Classified Station	7-1-90 7-1-90	Establish a new ZIP Code for post office boxes. This action changes the ZIP Code for the post office boxes at 29412.
OLD NEW	453060 453060	29715 29716	SC SC	Fort Mill Fort Mill	York York	Main Office Main Office	Post Office Post Office	7-1-90 7-1-90	Establish a new ZIP Code for post office boxes. This action changes the ZIP Code for post office boxes at 29715.
OLD NEW	473324	37068	TN	Franklin	Williamson	Royal Oaks	Classified Station	7-1-90	Establish a new ZIP Code for post office boxes.
OLD NEW	475665 475665	38119 38120	TN TN	Memphis Memphis	Shelby Shelby	White White	Classified Station Classified Station	7-1-90	Establish a new ZIP Code for a delivery area. This action splits ZIP Code 38119.
OLD NEW	475665 475665	38138 38139	TN TN	Memphis Memphis	Shelby Shelby	Germantown Germantown	Classified Branch Classified Branch	7-1-90 7-1-90	Establish a new ZIP Code for a delivery area. This action splits ZIP Code 38138.
OLD NEW	475665 475665	38115 38141	TN TN	Memphis Memphis	Shelby Shelby	Hickory Hill Hickory Hill	Classified Branch Classified Branch	7-1-90 7-1-90	Establish a new ZIP Code for a delivery area. This action splits ZIP Code 38115.
OLD NEW	487980	78278	TX	San Antonio	Bexar	Lockhill	Classified Station	7-1-90	Establish a new ZIP Code for post office boxes. Establish a new classified station for San Antonio, TX.
OLD NEW	519970 519970	23185 23188	VA VA	Williamsburg Williamsburg	James City James City	Main Office Main Office	Post Office Post Office	7-1-90 7-1-90	Establish a new ZIP Code for a delivery area. This action splits ZIP Code 23185. Williamsburg, VA becomes a multicoded city.
OLD NEW	543136 543136	98335 98332	WA WA	Gig Harbor Gig Harbor	Pierce Pierce	Main Office Main Office	Post Office Post Office	7-1-90 7-1-90	Establish a new ZIP Code for a delivery area. This action splits ZIP Code 98335.

**POST OFFICE CHANGES NUMBER 3—Continued**

Data	Fi- nance No.	ZIP Code	State	Name of Post Office	County/Parish	Name of Station, Branch, or Unit	Unit Type	Effective Date	Comments/Action
OLD NEW	557752 557872	25188 25189	WV .... WV ....	Stickney..... Sundial.....	Raleigh..... Raleigh.....	Main Office..... Stickney.....	Post Office..... Place Name.....	4-7-90 4-7-90	Post office and ZIP Code discontinued. Establish a place name. Use Stickney, WV 25189 as last line of address.
OLD NEW	561140 561140	53005 53045	WI ..... WI .....	Brookfield..... Brookfield.....	Waukesha..... Waukesha.....	Main Office..... Main Office.....	Post Office..... Post Office.....	7-1-90 7-1-90	Establish a new ZIP Code for a delivery area. This actions splits ZIP Code 53005.
OLD NEW	565310 565310	53051 53052	WI ..... WI .....	Menomonee Falls..... Menomonee Falls.....	Waukesha..... Waukesha.....	Main Office..... Main Office.....	Post Office..... Post Office.....	7-1-90 7-1-90	Establish a new ZIP Code for post office boxes. This action changes the ZIP Code for post office boxes at 53051.

—Office of Address Information Systems, 5-31-90.



## LOBBY DISPLAYS/PROMOTIONS FOR JUNE 1990

Post offices and classified units should remove all national lobby posters, notices, and displays not listed in this notice.

**Mandatory Displays.** The following posters, notices, and signs are mandatory for display:

Number	Title	Issued
Poster 7.....	Rules and Regulations Governing Conduct on Postal Property.	7-89
Poster 31-B.....	Mail Problem? (holds Consumer Service cards).	7-88
Poster 31-H.....	Consumer Service Card Promotion (must be displayed when Poster 31-B is not used to hold Consumer Service cards).	9-89
Poster 74.....	Packaging Pointers .....	6-82
Poster 75.....	Your Federal Lawmakers.....	1-84
Poster 76.....	Hazardous Materials.....	8-88
Poster 103.....	Postage Rates, Fees, and Information.	4-88
Notice 10.....	No Dogs Allowed .....	4-85
Notice 96.....	Notice of Reward.....	5-88
Sign 105.....	Express Mail Acceptance Office.....	4-86
Sign 145.....	Check Acceptance Policy (counter easel—a professionally printed facsimile may be substituted).	1-82
Selective Service registration:		
SSS 46.....	Poster.....	6-88
SSS 10.....	Brochure.....	4-87
SSS 1.....	Registration Form .....	

Olympic decals for lobby doors

Signs Indicating:

- Hours of Service (window and post office box).
- Letter drops and dispatch times.
- Services offered at window positions.
- Emergency contacts when office is closed.
- Manager on Duty.

**Rotating Displays.** The June schedule of lobby displays is listed below. Some offices may have insufficient space or fixtures to display all postings. To avoid a cluttered appearance, post only a few at a time, rotating them more frequently.

Title	Post	Remove
Lighthouses (counter easel) .....	Apr. 27 .....	Jun. 27.
Rhode Island (poster) .....	May 26.....	Jun. 24.
Olympians (poster).....	Jun. 24.....	Aug. 3.
Express Mail—The New Price Leader (poster).	Jun. 4.....	Jul. 1.

**Missing Children Poster.** Offices should display the April 1990 poster and discard previous issues.

**Stamp Posters.** Display the following:

Posters	Remove
90-13 George Caleb Bingham Extraordinary Art Card.	Jun. 3.
90-14 ATM Flag .....	Jul. 17.
90-15 Rhode Island.....	Jun. 28.
90-16 Bobcat .....	Jul. 1.
90-17 Isaac Royall House Postal Card.....	Jul. 16.

**Wanted Circulars.** A list of circulars still in effect appeared in POSTAL BULLETIN 21760, 4-4-90 (page 11).

**Postal Product Displays.** Display current philatelic products and all packaging products (retail products) attractively, with professionally printed, not handwritten, prices. When space does not permit the display of all packaging products, display the product line poster, *Wrap With Us*, in conjunction with products.

**Customer Forms and Supplies.** The following forms and supplies should be made available to customers in the lobbies:

Number	Title
11A	Express Mail Post Office to Post Office.
11B	Express Mail Post Office to Addressee.
2865	Return Receipt for International Insured or Registered Mail.
2966-A	Parcel Post Customs Declaration—United States of America.
2966-B	Parcel Post Customs Declaration and Dispatch Note.
2976	Customs—Douane C1.
3227	Stamps by Mail (envelope).
3575	Change of Address Order.
3800	Receipt for Certified Mail.
3804	Return Receipt for Merchandise.
3806	Receipt for Registered Mail.
3811	Domestic Return Receipt.
3813	Receipt for Domestic Insured Parcel.
4314C	Consumer Service Card.
EP13C	Express Mail (envelope).
EP14	Priority Mail (envelope).
PUB 65A	National Five-Digit ZIP Code and Post Office Directory.
PUB 66A	ZIP + 4 State Directory.

**Literature Rack Displays.** Display the following material in literature racks at all classified units (CAG A-G offices):

- Form 3203, Printed Stamped Envelopes Order (card)
- Form 3227, Stamps by Mail (envelope)
- SSS 10, Selective Service (brochure)
- SSS 1, Selective Service (registration form)
- PUB 201, A Consumer's Directory of Postal Services and Products

The following brochures, available through the material distribution centers (MDCs), are also recommended for display in literature racks:

### LOBBY DISPLAYS/PROMOTIONS FOR JUNE 1990—Continued

Number	Title
PUB 20	Priority Mail.
PUB 122	Customer Guide to Filing Indemnity Claims on Domestic Mail.
PUB 227	How to Prepare and Wrap Packages.
PUB 300	A Consumer's Guide to Postal Crime Prevention.
PUB 301	Postal Crime Prevention: A Guide for Businesses.
NOT 43	Express Mail General Information.
NOT 50	Theft? Protect Your Mail.
NOT 59	Postage Rates, Fees, and Information.
NOT 107	Hazardous Materials.
NOT 255	From Here to There—International Mail.
NOT 256	How to Go on a Shopping Spree.

*Specialized Program Displays.* Main post offices and classified stations and branches that offer special services or participate in a specific test should display posters, signs, or other material authorized by the test. Check removal dates for test or special service promotional material. The Postal Answer Line is an example of a special service.

*Optional Displays.* Refer to Chapter 2 of Publication 223, *Directives and Forms Catalog* (March 1990), for a current listing of optional displays including posters, notices, signs, and publications. Remove all unnecessary or obsolete signs, notices, and posters from lobbies.

—*Philatelic and Retail Services Dept., 5-31-90.*

### INTERNATIONAL FIRST FLIGHT CACHETS

**USAir.** On June 15, USAir will inaugurate round-trip service between Pittsburgh, PA, and Frankfurt, Federal Republic of Germany.

**American Airlines.** On June 23, American Airlines will inaugurate round-trip service between San Juan, PR, and Grenada. The following cancellations are available:

- June 15 Pittsburgh, Pennsylvania, to Frankfurt, Federal Republic of Germany
- June 23 San Juan, Puerto Rico, to Grenada

Cachets to be applied by:	Send covers to:
Pittsburgh Post Office .....	POSTMASTER ATTN FIRST FLIGHTS PITTSBURGH PA 15219-9998
Pittsburgh Air Mail Facility .....	USPS AIRPORT MAIL FACILITY ATTN FIRST FLIGHTS GREATER PITTSBURGH AIRPORT PITTSBURGH PA 15231-9998
San Juan Post Office .....	POSTMASTER ATTN FIRST FLIGHTS SAN JUAN PR 00936-9998
San Juan Air Mail Facility.....	USPS AIRPORT MAIL FACILITY ATTN FIRST FLIGHTS SAN JUAN INTERNATIONAL AIRPORT SAN JUAN PR 00913-9998

American Airlines will inaugurate service between Miami, Florida, and the following cities on the dates listed below with cancellations available.

*Customers should specify the appropriate destination to receive the proper cachet and cancellation.*

**July 1, 1990**

- Buenos Aires, Argentina      Rio de Janeiro, Brazil
- Sao Paulo, Brazil                      Santiago, Chile
- San Jose, Costa Rica                  Guatemala City, Guatemala

**July 21, 1990**

- La Paz, Bolivia                          Panama City, Panama
- Asuncion, Paraguay                      Lima, Peru

**August 1, 1990**

- Barranquilla, Colombia                  Bogota, Colombia
- Cali, Colombia                              Guayaquil, Ecuador
- Quito, Ecuador

**August 15, 1990**

- Belize City, Belize                      San Salvador, El Salvador
- San Pedro Sula, Honduras              Tequigalpa, Honduras
- Caracas, Venezuela

Cachets to be applied by:	Send covers to:
Miami Post Office .....	POSTMASTER ATTN FIRST FLIGHTS MIAMI FL 33152-9998
Miami Air Mail Facility .....	USPS AIR MAIL FACILITY ATTN FIRST FLIGHTS MIAMI INTERNATIONAL AIRPORT MIAMI FL 33159-9998

POSTAL OPERATIONS MANUAL 244.63 authorizes official cachet and philatelic treatment for the first flight service described above.

Customers must prepare covers to be sent on the flight in accordance with the following instructions:

1. Address all covers with postage affixed at the appropriate airmail rate.
2. Allow a clear space, 2½ by 2½ inches on the lower portion of the envelope and to the left of the address, for the cachet. Provide an additional 1½ inches to the left of the innermost stamp to permit a clear postmark. Each envelope should contain a filler of postal card thickness to ensure good impressions of the cancellations.
3. Place the covers in outer envelopes and mail them to reach the office applying the cachet no later than 3 days before the scheduled date of the flight. Write First Flight Covers in the lower left corner of the outer envelopes.

4. The Postal Service will not accept aerogrammes and postal cards. There is a limit of 50 covers per customer per flight. Covers already postmarked and those not prepared in accordance with instructions will not receive cachets or cancellations.—*Philatelic and Retail Services Dept., 5-31-90.*

Correction

**Postal Quarter III Philatelic Products Report**

The article, Postal Quarter III Philatelic Products Report, in POSTAL BULLETIN 21763, 5-17-90 (page 1), referred to Form 1079, *Philatelic Product Physical Inventory Report*, on pages 19-20. Item 29 on that form is incorrect. Item 29 should read: Spring 1990 Commemorative Stamp pack, not Spring 1989.

—*Philatelic and Retail Services Dept., 5-31-90.*

**Withholding of Mail Orders**

Enforced by postmasters at cities listed.

State/city	Names covered
PA, Lebanon 17042-0331 ...	No Name or R.K. Co., P.O. Box 331.
PA, Philadelphia 19103-1017.	Any and all of various names other than the surnames of Cooley and Berman, 114 South Vanpelt.

—*Judicial Officer, 5-31-90.*

**Hand Presses for Sealing Postage Meters and Mail Bags**

The Postal Service Contracts Branch (Supplies and Equipment), Somerville, NJ, has awarded an Indefinite Quantity Requirements Contract, Contract No. 337100-90-P-Z008, to E. J. Brooks Company for subject items. OEM numbers and prices are listed below.

*Ordering Procedure.* Submit all requirements on Form 7381, *Requisition for Supplies, Services, or Equipment*. Show PEN number and name of contact. Send with Label 101-V, the First-Class preaddressed, postage free penalty label, showing the complete delivery address (including the room number and an attention line) to:

MANAGER CONTRACTS BRANCH  
(SUPPLIES & EQUIPMENT)  
US POSTAL SERVICE  
VA DEPOT 152 RT 206 S  
SOMERVILLE NJ 08877-9993

*Delivery.* Within 30 days after receipt of order by contractor.

PS Item	OEM	Description	Unit price
0184A	8100020	Hand press with lever used on square lead seal with cord, PS Item 0815.	\$36.65
0814B	8140120	Hand press, plier type, used on tin band seals, PS Item 0816A & B.	26.80
0814C	8140020	Hand press, plier type, used to seal postage meters.	25.95

—*Procurement and Supply Dept., 5-31-90.*

**Forms Update**

This update lists all new, revised, and obsolete forms since POSTAL BULLETIN 21762, May 3, 1990. Forms are categorized as new, revised, or obsolete and are listed in order by number within each category. In the list of new forms, a column has been added to indicate the supply source code as defined in part 345, Publication 223. *Directives and Forms Catalog*. In the revised category, the third column indicates the date of the oldest issue that may still be used. When only the current issue may be used, the revised issue date is listed. The obsolete category also shows if and by what the form was replaced.

**New Forms**

Form number and date	Title	Supply source
PS 17-SX, 05-90	Accountable Items Requisition Stamp Distribution Network.	H/NA
PS 17-TX, 05-90	Accountable Items Returned Stamp Distribution Network.	H/NA
PS 991-MI, 12-89	Application for Management Intern Program.	H/H

**Revised Forms**

Form number and date	Title	Oldest usable date
PS 1045, 06-89 .....	Technology Service Request....	06-89
PS 1668, 04-90 .....	Shipping Instructions (Printing and Binding Material).	04-90
PS 2025, 03-90 .....	Contract Personnel Questionnaire.	07-86
PS 3652, 05-90 .....	Statement of Mailing—International Priority Airmail.	12-86
PS 7314, 01-90 .....	Medical Agreement .....	01-90
PS 8046, 10-89 .....	Request for Part-Time or Return to Full-Time Employment.	10-89

**Obsolete Forms**

Form number and date	Title	Obsolete date
PS 308, 02-74	Verification of Service (not replaced).	05-15-90
PS 1761, 01-84	Safety and Health Change Request Impact Evaluation Sheet (not replaced).	04-15-90
PS 3078, 09-73	Payroll Deduction for Financial Organization (not replaced).	05-15-90

—*Office of Information Services, 5-31-90.*

**The orange and blue pouch is to be used for Express Mail Service only.**

All Personnel Processing Mail for Dispatch Abroad

## Foreign Order No. 296

Keep all foreign order notices for use as reference.

**Tentative Orders.** A tentative *Lottery Order* has been issued against the following:

### Holland

European Lottery Guild Postbus 75018, 1070 AA Amsterdam, Holland	Mail Processing Center Postbus 75018, 1070 AA Amsterdam, Holland
--	--

### Canada

Worldwide Winners Enterprises Ltd.  
No. 94228, 6871 No. 3 Road  
Richmond, B.C.  
Canada V6Y 3J2  
and

Fay Clemens  
No. 82260, 474 MacDonald Street  
Burnaby, B.C.  
Canada V5C 5P7

Winners Choice Global Lottery Agency  
No. 58200  
1360 S.W. Marine Drive  
Vancouver, B.C.  
Canada V6P 6E3  
and  
Subscription Department  
No. 58200  
1360 S.W. Marine Drive  
Vancouver, British Columbia  
Canada V6P 6E3

**Final Order.** The Tentative Decision and Order issued against the following has become final:

### Canada

Project Rainbow P.O. Box 3979 12209 - 118th Avenue Edmonton, Alberta Canada T5L 4K1 and	Priority Member Services P.O. Box 3979 12209 - 118th Avenue Edmonton, Alberta Canada T5L 4K1
--	--

Do not dispatch any mail to the above. Place the mailpieces in a pouch endorsed Foreign Order Mail and send it to Postmaster, Claims, Inquiry & Undeliverable Mail, James A. Farley Building, Room 2029-A, New York NY 10199-9543. Do not place any endorsement on the mailpieces themselves.

Installations may post this notice at the outgoing primary, and they must post it on the Foreign Order Board at all MSCs and designated International Exchange Offices.—*Judicial Officer, 5-31-90.*

## APO/FPO Changes

The following corrects the APO/FPO changes published in POSTAL BULLETIN 21762, 5-3-90 (page 22), which listed these destinations on the Express Mail Mailing Service (EMMS) network:

APO/FPO	Actions	Effective date	Mailing restrictions	EMMS network
09145	Active.....	.....	B1-C-F1	No.
09219	Active.....	.....	B1-C-F1	No.

As a reminder to all acceptance clerks, please ensure that mailing restrictions, especially E2, are adhered to for the following APO/FPOs:

APO/FPO	Actions reminder	Effective date	Mailing restrictions
09017	Restrictions .....	.....	B-E2-F-H1-R-U1
09038	Restrictions .....	.....	B-E2-F-H1-R-U1
09152	Restrictions .....	.....	B-E2-F-H1-R-U1
09298	Restrictions .....	.....	B-E2-F-H1-R-U1
09616	Restrictions .....	.....	B-E2-F-H1-R-U1
09671	Restrictions .....	.....	B-E2-F-H1-R-U1

All field division general managers/postmasters must notify acceptance units of these changes.

—*Delivery, Distribution, and Transportation Dept., 5-31-90.*

### DMM Notice

## Minimum Purchase of Coil Stamps: Plate Number

The minimum purchase required to receive a plate number for \$1 coil stamps has changed to five stamps. DOMESTIC MAIL MANUAL Issue 36 (9-16-90) will contain the following revisions:

In section 163.533, the phrase "line pairs or line markings" changes to "a plate number." In section 163.533b, the word six changes to five. The *Note* following section 163.533 is removed.

—*Philatelic and Retail Services Dept., 5-31-90.*

**Make sure that empty  
mailbag does not have a  
letter hidden in the bottom.  
It could be overlooked—  
and it could be yours!**

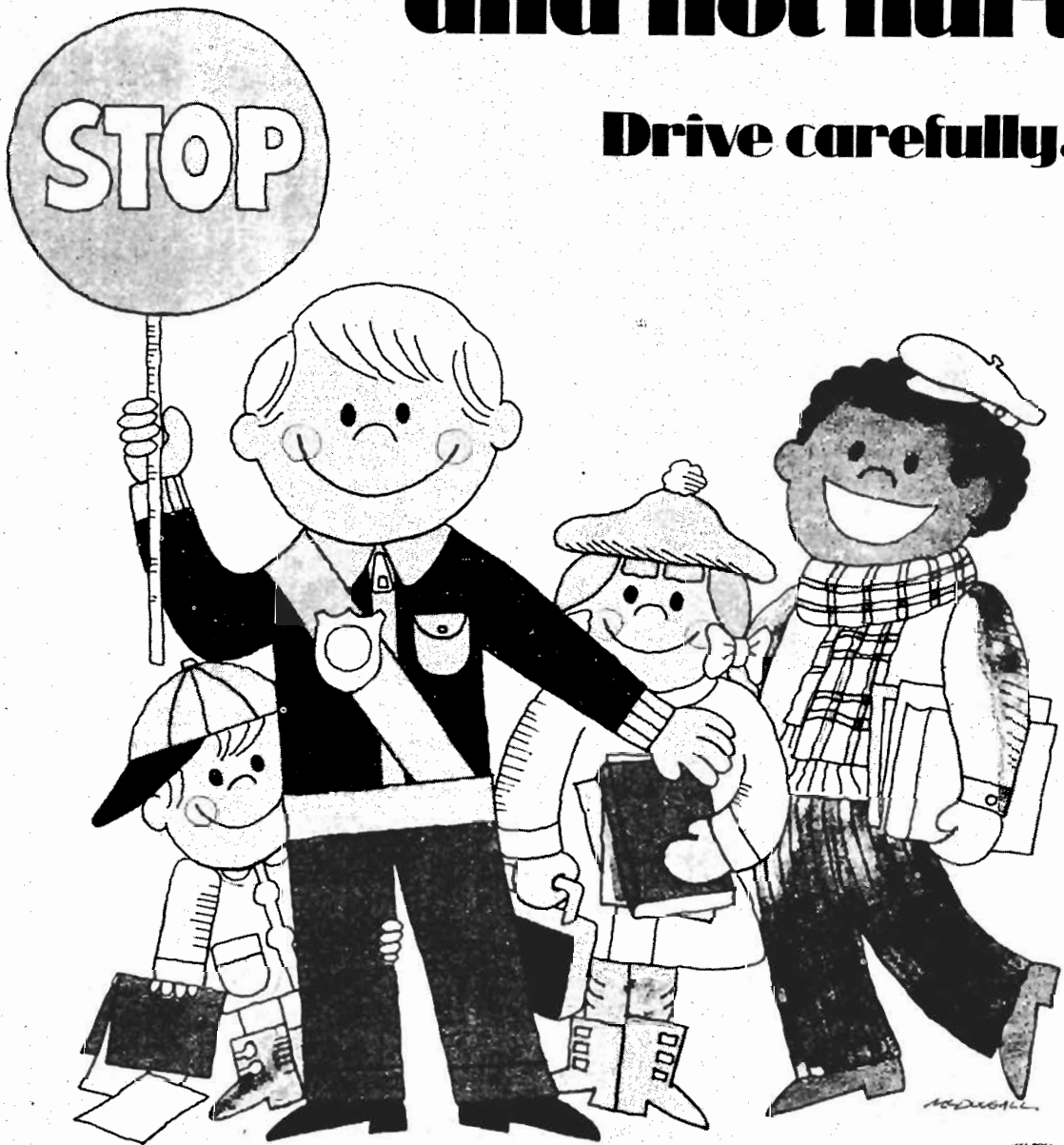
### MISSING U.S. MONEY ORDER FORMS—DO NOT CASH

To be posted and used by window clerks. As directed, destroy previous notices. Any interim notices should be destroyed when the numbers listed appear in the POSTAL BULLETIN. The actual serial numbers consist only of the first 10 digits on the money orders.  
**A. New Style.** (Listed below) Destroy PB 21763 listing, PB 21461 listing for B Old Style (Gray) remains valid. Retain C Counterfeit PB 21470 listing. **Reminder—check for altered dollar amounts by holding money order to the light. Do not cash money orders with ZIP 99099.**

302 000 0000 to	366 772 6702 to 6799	381 924 0748 to 0799	404 071 4268 to 4299
302 123 9999	366 998 7669 to 7681	383 156 6968 to 6999	404 347 5356 to 5399
348 755 7904 to 7999	367 303 6006 to 6099	383 156 7128 to 7199	404 347 5548 to 5599
349 116 6533 to 7499	367 396 9705 to 9799	383 156 7300 to 7999	404 726 4500 to 4599
349 389 9242 to 9299	367 396 9900 to 9999	383 299 2081 to 2099	404 961 5001 to 5199
349 392 8081 to 8099	367 428 8800 to 8999	383 314 3968 to 3999	405 325 0188 to 0198
349 615 0000 to 0099	367 519 6700 to 6899	383 892 1000 to 1344	406 009 4587 to 4599
349 746 2056 to 2099	368 371 3923 to 3999	383 892 1382 to 1399	406 260 6830 to 6899
349 910 0000 to 0399	368 730 7825 to 7899	385 568 2330 to 2399	406 459 6497 to 6499
350 017 1652 to 2199	368 854 6200 to 6299	385 599 7554 to 7575	406 733 3000 to 3999
350 251 5100 to 5199	368 978 0561 to 0599	385 774 2024 to 2099	407 545 1556 to 1599
350 366 1104 to 1119	369 345 0188 to 0199	387 314 5574 to 5599	407 594 0412 to 0599
350 366 1145 to 1166	369 674 8141 to 8199	389 696 2400 to 2799	407 692 9100 to 9299
350 518 7350 to 7374	369 718 3783 to 3799	389 846 3104 to 3135	408 265 2275 to 2288
351 110 4900 to 4999	370 193 8257 to 8299	389 846 3145 to 3195	408 499 7700 to 7799
351 113 4615 to 4699	371 241 3118 to 3199	389 887 9211 to 9230	408 499 7900 to 7999
351 113 4800 to 4999	371 630 0100 to 0199	389 887 9234 to 9299	408 682 8484 to 8599
360 003 2454 to 2499	372 308 4180 to 4199	390 001 3182 to 3199	408 698 7015 to 7099
360 037 4500 to 4549	372 311 5400 to 5499	390 001 3500 to 3699	409 072 3941 to 3999
360 038 0502 to 0599	372 360 8303 to 8399	390 545 5974 to 5999	410 491 2311 to 2399
360 112 8583 to 8599	372 407 1025 to 1099	391 104 6146 to 6199	410 694 8400 to 8599
360 134 2600 to 2699	373 390 2301 to 2399	391 783 3020 to 3599	410 775 1500 to 1599
360 135 5611 to 5699	373 390 2518 to 2599	391 792 6100 to 6199	410 795 7927 to 7999
360 135 8159 to 8199	373 390 2604 to 2699	392 668 2956 to 2999	410 867 0917 to 0966
360 172 1404 to 1499	373 463 0902 to 0999	392 854 8500 to 8899	410 867 0970 to 0999
360 173 8800 to 8899	374 022 8105 to 8199	393 584 7566 to 7699	411 868 1023 to 1199
360 252 2100 to 2199	374 692 8858 to 8899	393 650 0074 to 0099	411 922 2322 to 2399
360 282 4600 to 4699	374 768 2600 to 2699	393 838 8316 to 8499	412 193 0900 to 0999
360 403 8453 to 8499	374 795 2118 to 2199	393 893 6007 to 6099	412 885 5953 to 5999
360 418 0700 to 0799	375 169 4400 to 4599	394 126 6907 to 6999	415 161 8858 to 8868
360 419 6700 to 6799	375 637 9137 to 9199	394 189 0405 to 0599	417 871 9250 to 9299
360 535 5648 to 5657	375 637 9365 to 9999	394 822 3243 to 3278	417 930 9533 to 9599
360 762 9368 to 9399	375 744 7930 to 7999	394 990 1810 to 1899	418 164 6500 to 6799
361 142 2817 to 2899	375 829 3400 to 3499	395 343 3264 to 3299	418 423 9863 to 9899
361 440 9240 to 9299	375 851 9100 to 9199	395 373 3035 to 3099	418 633 5922 to 5999
361 754 9300 to 9499	376 850 0813 to 0899	395 396 9649 to 9799	418 719 8520 to 8599
361 782 4204 to 4299	376 855 6764 to 6999	395 970 3240 to 3299	418 744 2235 to 2299
361 974 6811 to 6999	376 903 0721 to 0738	397 622 4054 to 4099	418 962 2848 to 2899
362 246 6800 to 6899	376 906 3206 to 3299	397 819 8902 to 8999	419 543 0286 to 0299
362 299 8900 to 8999	377 113 7461 to 7499	397 819 9200 to 7699	419 730 0313 to 0369
362 861 3064 to 3099	377 224 2300 to 2599	399 070 0872 to 0899	419 730 0380 to 0399
363 130 1575 to 1599	377 955 4285 to 4399	399 156 7119 to 7199	420 599 0734 to 0798
363 130 4500 to 4599	378 029 9347 to 9399	399 203 5064 to 5099	420 661 4115 to 4199
363 374 9010 to 9099	378 085 3679 to 3699	399 296 9909 to 9999	420 758 9500 to 9699
363 444 9333 to 9399	378 210 9090 to 9099	399 792 7775 to 7799	421 146 8600 to 8649
363 560 5050 to 5099	378 351 1063 to 1099	399 792 8300 to 8399	421 313 4500 to 4999
363 851 4259 to 4299	378 630 9489 to 9599	399 396 8935 to 8999	421 364 5537 to 5599
363 853 7582 to 7799	379 128 9584 to 9599	399 396 8935 to 8999	421 988 9700 to 9799
363 861 7600 to 7899	379 509 2600 to 2699	400 427 1051 to 1999	422 587 7024 to 7099
363 904 4540 to 4999	379 679 8060 to 8099	401 045 1505 to 1549	424 500 6050 to 6099
363 922 5744 to 5799	379 843 5100 to 5199	401 045 1571 to 1599	700 065 2570 to 2599
363 930 9400 to 9699	380 093 9600 to 9611	401 294 2700 to 2799	802 678 2605 to 2699
363 965 7892 to 7999	380 165 1165 to 1199	401 310 9505 to 9599	803 605 2840 to 2899
364 467 6102 to 6199	380 489 6800 to 6899	401 260 7000 to 7499	803 605 6300 to 6499
364 826 1081 to 1099	380 572 1840 to 1899	402 578 7876 to 7899	805 323 5006 to 5024
365 512 9428 to 9499	381 077 3600 to 3699	403 125 6744 to 6799	805 466 7255 to 7299
365 693 4200 to 4299	381 325 4500 to 4599	403 280 6470 to 6499	806 015 3885 to 3899
365 842 7960 to 7999	381 540 9900 to 9999	403 685 8600 to 8699	806 087 1100 to 1499
365 997 7565 to 7699	381 604 2510 to 2699	404 003 0300 to 0399	806 268 9275 to 9299
366 205 2072 to 2099	381 645 9525 to 9599	404 041 8838 to 8899	806 534 3400 to 3477
			990 117 5600 to 5999

# Children should be seen and not hurt

**Drive carefully.**



### Warning Notice—Unrecovered Missing Canadian Money Order Forms

(To be posted and used by window clerks. As directed, destroy previous notices. Insert any interim notices in sequence.)

The following money orders are void and should not be cashed: (1) All card type orders. (2) New Style orders 000,000,001-399,999,999. Advise holders to send them to Canada Post Office, Ottawa, Canada, K1A 0B1.

The new money order serial numbers consist of the first nine digits. The 10th digit is a check digit only. Destroy the PB 21762 article.

541,097,901 to 8,200	561,249,012 to 9,200	580,335,207 to 5,300	601,652,701 to 3,300
543,289,525 to 290,200	561,265,399 to 5,500	580,337,901 to 8,000	602,528,605 to 9,000
543,305,301 to 5,600	562,601,501 to 1,600	580,562,401 to 2,500	603,708,901 to 9,200
544,194,216 to 4,700	563,184,500 to 4,700	580,899,103 to 9,200	603,780,401 to 0,500
544,619,721 to 620,100	563,957,851 to 7,860	581,171,918 to 2,400	603,780,701 to 0,800
544,999,729 to 9,800	564,299,834 to 300,000	581,341,293 to 1,400	603,780,942 to 1,000
545,553,528 to 3,800	564,319,659 to 9,700	581,986,501 to 6,600	604,020,801 to 0,900
545,775,152 to 5,200	565,045,232 to 5,245	584,314,756 to 5,000	604,083,174 to 3,700
547,276,820 to 7,000	565,145,850 to 5,875	584,834,505 to 4,600	604,122,517 to 2,900
547,457,901 to 8,300	565,868,534 to 8,549	584,862,862 to 3,900	604,181,801 to 2,100
547,469,676 to 9,700	567,078,033 to 8,100	584,947,247 to 7,300	604,799,901 to 800,800
547,542,271 to 3,000	567,422,270 to 2,600	584,963,232 to 3,300	605,721,494 to 605,721,500
547,578,870 to 8,900	567,422,270 to 2,600	585,948,403 to 9,000	605,367,722 to 8,200
547,923,901 to 4,000	568,505,097 to 5,100	586,432,013 to 2,500	605,949,901 to 950,000
548,988,201 to 8,300	568,574,080 to 4,099	586,543,860 to 3,900	607,273,964 to 274,500
549,641,019 to 1,100	569,537,631 to 8,000	586,830,748 to 0,800	607,586,501 to 6,600
549,670,720 to 0,800	569,791,703 to 1,730	589,005,217 to 5,300	607,673,301 to 4,500
550,092,673 to 2,700	569,793,491 to 3,510	589,876,801 to 6,900	607,591,119 to 591,200
550,355,949 to 6,100	569,915,309 to 5,320	590,230,567 to 0,600	607,930,501 to 1,000
551,144,112 to 4,400	570,275,601 to 5,700	590,242,301 to 2,400	608,011,756 to 2,300
551,698,301 to 8,320	571,065,984 to 6,600	590,973,597 to 4,000	608,288,084 to 288,100
551,961,814 to 1,880	571,106,886 to 7,200	591,138,501 to 8,600	608,678,701 to 9,100
552,222,532 to 3,800	571,123,771 to 3,900	591,724,456 to 4,500	608,722,023 to 2,200
553,468,301 to 8,400	572,226,617 to 6,700	591,778,901 to 9,000	609,084,101 to 5,100
553,853,051 to 3,100	572,380,133 to 0,145	591,860,001 to 0,100	611,338,466 to 8,700
554,939,152 to 9,200	572,380,203 to 0,258	592,371,801 to 2,100	611,387,101 to 387,200
554,998,701 to 8,800	573,666,236 to 6,294	593,389,186 to 9,200	612,182,901 to 183,700
555,144,758 to 4,770	574,217,901 to 7,925	594,538,411 to 8,500	612,185,601 to 186,100
556,084,478 to 4,500	574,415,253 to 5,300	594,724,301 to 4,900	613,364,701 to 365,100
556,250,024 to 0,200	574,526,901 to 7,000	594,768,672 to 8,700	615,753,401 to 3,600
556,351,291 to 1,600	574,810,201 to 1,200	594,952,701 to 953,400	616,192,014 to 2,100
556,508,870 to 8,900	574,982,801 to 3,500	596,073,100 to 3,500	616,042,701 to 3,300
557,669,091 to 9,100	575,311,297 to 7,400	596,308,901 to 9,100	617,989,336 to 9,499
557,669,191 to 9,200	575,913,143 to 3,200	597,044,346 to 044,400	
557,711,743 to 1,800	575,977,151 to 7,200	597,253,460 to 3,500	
557,786,836 to 6,860	576,674,701 to 4,800	598,659,921 to 660,100	
558,228,301 to 8,400	577,385,856 to 6,100	599,664,001 to 665,700	
558,638,801 to 9,000	577,907,201 to 7,800	600,349,301 to 9,400	
559,562,701 to 2,742	578,365,863 to 5,900	600,439,001 to 9,100	
559,565,818 to 6,000	578,649,083 to 9,100	600,493,650 to 3,700	
559,736,353 to 6,400	578,988,972 to 9,400	600,526,018 to 6,400	
559,841,401 to 1,700	579,017,876 to 7,900	601,042,674 to 2,700	
560,473,901 to 3,922	579,052,035 to 2,057		
561,223,101 to 3,400	579,541,273 to 1,299		
	579,877,101 to 7,200		
	580,207,301 to 7,770		

"Safety is in the eyes of those who see it.  
... accidents are made by those who don't look."



INVALID EXPRESS MAIL CORPORATE ACCOUNT NUMBERS

To be posted and used by retail/acceptance clerks. This supersedes all previous notices. Destroy PB 21763 listing. Retail/acceptance clerks must not accept Express Mail shipments bearing any of the invalid numbers (listed below) in the "customer number" or "agreement number" section of the label or form.

Note: The first 6 digits of a 9-digit Custom Designed Service and Next Day Pickup Service Agreement make up the Corporate Account Number.

Table with 12 columns of numerical data representing corporate account numbers. The numbers are organized in 10 rows and 12 columns.



INVALID EXPRESS MAIL CORPORATE ACCOUNT NUMBERS—Continued

192014	212593	300277	305241	327334	330342	333167	335297	339075	358250	392375	437019	480238
192021	212641	300344	305256	327336	330362	333174	335299	339090	358330	392378	441024	480278
192027	212642	300371	305275	327345	330381	333194	335300	339134	358565	392408	441026	480304
192028	212664	300402	305281	327368	330457	333231	335362	339141	358600	392414	441482	480320
192031	212697	300427	305286	327369	330460	333232	335382	339151	358610	392415	441488	480430
192034	212732	300530	305324	327383	330461	333234	335385	339152	358640	392427	441554	480461
192037	212754	300630	305328	327384	330468	333294	335399	339155	359250	392428	441614	480497
192041	212760	300673	305333	327386	330502	333303	335443	339158	359515	392429	441738	480605
192048	212786	300757	305416	328098	330516	333324	335444	339333	359610	392433	441821	480768
192051	216031	300826	305454	328121	330521	333331	335472	339340	361015	392434	441916	480770
192053	220207	300836	305612	328146	330524	333349	335510	339383	361053	392448	443146	480792
192054	220212	300846	305654	328153	330526	333374	335527	339409	361147	392456	443152	480804
192055	220224	300857	305693	328160	330554	333391	335531	339416	362018	392474	443171	480811
292059	221029	300908	305956	328179	330556	333427	335570	339426	362024	393064	444083	480872
192060	221043	301016	312165	328203	330579	333454	335598	339428	363111	393067	444732	481335
192063	221066	301091	312170	328209	330599	333457	335828	339462	363146	393072	445011	481406
192065	221094	301105	312236	328238	330603	333460	335838	339504	363155	393075	445014	482244
192067	221101	301288	314120	328264	330621	333463	335864	339516	372413	393078	445036	482278
192077	221124	301291	314148	328269	330632	333487	335875	339525	372438	393079	445122	482290
192082	222121	301318	314361	328272	330633	333490	335894	339606	372490	393084	445123	482304
192087	223105	301322	314602	328285	330675	333497	335902	339622	372500	393089	445124	482334
192090	226049	301323	314923	328291	330706	333528	335935	339635	372512	393091	445125	482363
192103	232160	301481	317117	328292	330751	333533	335944	339647	372516	393093	445126	482390
192104	232165	301494	317153	328308	330754	333540	335948	339656	372519	393098	445127	482404
192105	232181	301571	317184	328313	330838	333568	335961	339667	372522	393105	445128	482422
192107	232188	301609	317205	328345	330889	333586	335977	339671	372535	394222	445129	482469
192114	232254	301618	320783	328349	330904	333594	335983	339675	374071	395208	445131	482484
192121	235163	301622	320796	328357	330958	333602	336032	339679	374088	401018	445132	482512
192125	235165	301651	320828	328360	330962	333627	336055	339702	380129	402160	445133	482549
192127	235182	301665	320958	328405	330994	333682	336079	339713	380149	402430	445134	482603
192137	253102	301691	320980	328411	331024	333694	336098	339713	381007	402438	445135	482622
192139	253229	301700	321002	328414	331049	333720	336109	339727	381058	402450	445136	482652
192140	261001	301717	322001	328415	331184	333748	336120	339733	381063	402484	445137	482656
192152	262001	301731	322345	328428	331233	333783	336163	339746	381068	402549	445146	482687
192157	265003	301778	322448	328444	331271	333785	336170	339758	381432	402570	447094	482694
192158	272112	301795	322458	328447	331421	333836	336175	339760	381446	402601	449014	482736
192168	273053	301838	322463	328450	331445	333861	336186	339770	381487	402611	450152	482782
192199	273071	301879	322484	328456	331472	333862	336202	339815	381605	402691	452014	482793
192200	274109	301887	322491	328467	331514	333865	336281	339855	381659	402710	452390	482806
192202	274114	301926	322614	328468	331570	333871	336341	339873	381671	402748	452420	482845
192206	274147	301982	322624	328499	331662	333880	336381	339895	381846	402767	452638	482908
192209	275012	302015	322722	328503	331770	333911	336514	340056	381858	405054	452731	482913
192219	275059	302053	322738	328509	331777	333922	336552	340073	381894	405069	452835	483031
192224	278087	302168	322750	328510	331832	333949	336559	340091	381904	405102	452837	483048
192225	279050	302175	322798	328525	331964	333992	336593	340109	381917	410019	452959	483109
192226	282211	302221	322824	328526	332023	333998	336611	340118	381922	410050	452969	483124
192233	282213	302224	322834	328529	332025	334029	336656	340158	381927	410150	452977	483130
192240	282328	302301	322866	328565	332042	334068	336665	340170	381942	410166	452994	483246
192242	282350	302318	322869	328588	332056	334073	336680	340212	381983	410174	454156	483255
192249	282357	302321	322891	329117	332071	334075	336784	340221	381992	420028	454230	483308
192254	282535	302337	323061	329128	332127	334215	336791	340249	383064	423014	454240	483536
192262	283236	302416	325003	329141	332226	334289	336828	340284	383070	423030	454301	483549
192267	283270	302425	325006	329165	332334	334318	336909	340286	383048	430020	454310	483574
192273	283330	302427	325039	329172	332341	334401	336942	340335	390026	430027	454355	483640
192275	283343	302438	325047	329211	332368	334410	336943	340341	390030	430057	454491	485069
193182	283368	302509	325417	329228	332397	334412	336958	340354	390032	430059	460052	486123
193190	292205	302546	325610	329230	332416	334417	336975	340363	391014	431009	460054	489263
193238	292340	302558	325860	329235	332431	334441	337023	340407	391015	432176	461031	489288
193256	293121	302585	325867	329245	332459	334460	337083	340447	391056	432197	462305	489294
193320	293153	302682	325890	329264	332470	334530	337105	340641	391064	432225	462320	489327
196052	294255	302712	326265	329287	332473	334685	337128	340660	391077	432295	462384	490157
198094	294291	302713	326332	329301	332474	334700	337322	340718	391099	432297	462393	490202
200481	294307	302746	326357	329322	332521	334704	337336	347001	391103	432392	462526	490219
200754	294324	302789	326361	329354	332526	334750	337433	349025	391105	432399	466308	495165
200771	294354	302802	326366	329417	332565	334803	337442	349033	391106	432402	466550	496074
200865	294357	302823	326374	329446	332594	334812	337447	349065	391107	432419	468075	503160
200898	294361	302837	327091	330028	332627	334866	337451	349445	392164	432463	468246	503181
307130	294384	302855	327093	330051	332685	334901	338009	349449	392216	432479	468253	503186
207261	295052	302858	327119	330062	332691	334902	338013	349812	392242	432489	468273	507051
207262	295066	302900	327151	330146	332792	334903	338024	349835	392278	432540	469129	520028
207286	295090	302958	327168	330158	332795	334915	338042	349850	392282	432552	469133	522022
207392	295144	302968	327179	330172	332819	334922	338043	349861	392284	432564	473008	523014
208112	295148	302990	327181	330192	332853	334951	338124	349865	392286	432567	473033	524043
208208	295224	303174	327191	330200	332855	334953	338140	349925	392290	432604	476010	524045
208215	295225	303504	327199	330225	333009	335022	338144	349928	392294	432617	477018	524089
208228	295281	303549	327206	330252	333026	335046	338181	349940	392296	432622	477062	525009
208453	295283	303616	327221	330253	333058	335051	338248	349953	392302	436054	477076	526015
208471	296203	303733	327229	330274	333070	335098	338257	351037	392314	436123	477080	526016
209116	297029	303869	327277	330277	333087	335136	339003	352384	392349	436210	480011	527012
212312	300042	305005	327281	330279	333092	335161	339004	352430	392351	436226	480024	531133
212374	300105	305145	327301	330292	333129	335233	339035	352449	392355	436271	480062	531165
212504	300138	305169	327319	330320	333144	335246	339036	352450	392368	437006	480124	531183
212586	300274	305173	327322	330321	333146							

INVALID EXPRESS MAIL CORPORATE ACCOUNT NUMBERS—Continued

Table with 16 columns containing numerical account numbers. The first column contains 15-digit numbers, the second column contains 14-digit numbers, and the remaining 14 columns contain 11-digit numbers. The table lists a wide range of account numbers in a grid format.

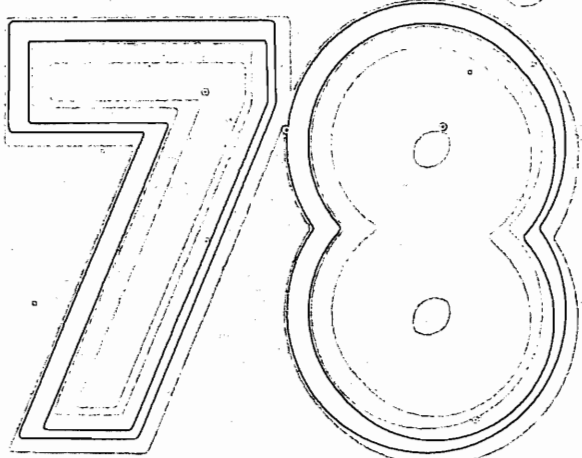
INVALID EXPRESS MAIL CORPORATE ACCOUNT NUMBERS—Continued

921940	926090	926889	927709	931355	940456	946158	950256	951187	958402	972663	981777	995540
921943	926150	926915	928149	931379	940477	947042	950258	951209	958437	972684	981930	995579
921957	926153	926958	928154	931575	940564	949144	950293	951242	958487	972689	984076	995580
921970	926160	926975	928159	932629	941325	949162	950359	951250	959043	972699	984190	995680
921971	926220	927273	928221	933106	941438	949301	950392	951265	967044	972740	985058	995683
921985	926240	927277	928290	933279	941441	950028	950406	951280	967163	972772	992090	995701
921988	926308	927297	928293	933325	941573	950030	951022	951326	968261	972812	992177	995703
922043	926381	927338	928425	933336	941580	950062	951025	951338	968311	972836	992251	995727
922064	926396	927360	928448	937426	941591	950075	951055	951348	968345	972892	992267	995729
922137	926408	927365	928509	939039	941612	950082	951070	951501	968624	972900	992293	997083
924212	926419	927377	928551	939041	941626	950096	951080	951504	968758	973241	992307	997127
924254	926649	927388	928559	939060	941660	950106	951090	951505	968767	973271	992317	997187
924306	926676	927428	928586	939067	945276	950112	951092	952006	968772	974032	992348	997233
924377	926688	927429	928606	939095	945314	950143	951101	952244	972005	974127	992355	
924404	926705	927494	928744	939111	945395	950182	951108	952255	972387	974136	992374	
925035	926737	927512	928758	939116	945436	950193	951119	952268	972499	980013	992407	
925100	926788	927535	928800	939132	945589	950199	951122	953217	972540	980147	992430	
926025	926820	927542	928805	939135	945680	950215	951131	954129	972542	980177	992452	
926030	926853	927597	928808	939142	945690	950222	951132	955672	972561	981562	995228	
926035	926863	927606	928844	940239	945703	950240	951150	958372	972576	981578	995397	
926059	926868	927670	931216	940343	945778	950250	951164	958400	972599	981738	995400	

—Marketing Dept., 5-31-90.



Keep temperatures  
no warmer than 65°  
in the winter



Keep temperatures  
no cooler than 78°  
in the summer

**UNITED STATES POSTAL SERVICE**

475 L'ENFANT PLAZA SW  
 WASHINGTON, DC 20260-1571  
 OFFICIAL BUSINESS

PENALTY FOR PRIVATE USE TO  
 AVOID PAYMENT OF POSTAGE, \$300



FIRST-CLASS MAIL  
 POSTAGE & FEES PAID  
 USPS  
 PERMIT NO. G-10

**FIRST-CLASS**

**Be sure to attach your mailing label with ANY change to a current subscription.**

Postal Service Order	Public Orders
<p><b>1. Missing Issues:</b> To order copies not received in regular distribution, call the materiel distribution center at PEN 440-4211 or (201) 707-4211, ext. 211.</p> <p><b>2. Single Copies:</b> To order additional copies, send Form 7380, <i>Supply Center Requisition</i>, to:                      MATERIEL DISTRIBUTION CENTER                      VA SUPPLY DEPOT 152 RT 206                      SOMERVILLE NJ 08877-0001</p> <p><b>3. Address and Quantity Changes:</b> Complete the form below and send this entire page, including mailing label, to:                      DOCUMENT CONTROL DIVISION                      USPS HEADQUARTERS RM 2800                      475 L ENFANT PLAZA SW                      WASHINGTON DC 20260-1571</p>	<p><b>1. Source:</b> SUPERINTENDENT OF DOCUMENTS                      US GOVERNMENT PRINTING OFFICE                      941 N CAPITOL ST NE                      WASHINGTON DC 20402-9371                      TEL (202) 783-3238</p> <p><b>2. Single Copies:</b> \$2.00 each, Domestic; \$2.50, International. Complete the form below and send this entire page to the above address.</p> <p><b>3. Subscription:</b> \$56 per year, Domestic; \$70, International. Complete form below and send this entire page to the above address.</p> <p><b>4. Address and Quantity Changes:</b> Complete the form below and send this entire page, including mailing label, to the above address.</p>

**ORDER FORM**

Postal Facility, Company, or Personal Name	<input type="checkbox"/> Change the quantity of my subscription	
Attention Line (if needed)	Old Quantity	New Quantity
Address Number, Street, City, State, ZIP Code, and Country (if needed)	<input type="checkbox"/> Enter my subscription	
<input type="checkbox"/> Check if this is a new address and attach your mailing label	Method of Payment <input type="checkbox"/> GPO Deposit Account: <input type="text"/> - <input type="text"/> <input type="checkbox"/> Check payable to the Superintendent of Documents <input type="checkbox"/>  <input type="checkbox"/> 	
Person to Contact	Credit Card Number <span style="float: right;">Expiration Date</span>	
Daytime Phone Number (    )	Signature	

**Effective Period:** POSTAL BULLETIN articles are effective for 1 year, unless articles change the text of permanent directives or unless otherwise specified.

**Distribution:** USPS distributes the BULLETIN to all postal facilities. The Government Printing Office distributes copies to all public subscribers.

**Index:** A quarterly index of BULLETIN articles appears in January, April, July, and October. A yearly index appears early the following year.