



postal bulletin

Published Since March 4, 1880

PB 21740—August 31, 1989—20 Pages

15-Cent America the Beautiful Postal Card

The 15-cent Philadelphia city regular, single postal card goes on sale September 25 in Philadelphia, Pennsylvania. Philadelphia is the first of four cities to be honored on America the Beautiful Series postal cards. This fall, three separate cards in this series will feature Baltimore, New York, and Washington, DC. The cities were selected to highlight those places that might easily be visited by delegates to the Universal Postal Union (UPU) Congress, convening in Washington, DC, in November.

This card is the seventh in the America the Beautiful Series.

Do Not Place on Sale Before September 26, 1989



America the Beautiful USA 15

Copyright U.S. Postal Service 1989

A future issue will include collector information.

Supply. Post offices with authorized philatelic centers will receive an automatic distribution. All other post offices should order sufficient quantities of this postal card to meet anticipated local philatelic demand. However, *limited* quantities will be available.

CAG A-G post offices requiring bulk quantities of this card should immediately submit Form 3216, *Requisition for Postal Cards—Bulk Quantities*, to the Government Printing Office using *Item 2266*. All other post offices requiring this card should immediately order them from their stamp distribution offices on a separate Form 17-A, *Accountable Items Requisition From Stamp Distribution Office*.

—Philatelic and Retail Services Dept., 8-31-89.

Benjamin Franklin Stamp Club Program

A wide array of materials is being produced for the Benjamin Franklin Stamp Club (BFSC) Program for the 1989-90 school year. BFSC coordinators will receive the *1989 Treasury of Stamps Album* in early September along with this year's Kit 4, which contains the Teacher's Guide and numerous games and puzzles. The first of this year's five issues of the *Stamp Fun* and *Leader Feature* newsletters also will be distributed in September.

A colorful Stamposaurus Jigsaw Puzzle, designed to complement National Stamp Collecting Month materials, and the new *Introduction to Stamp Collecting* will be shipped in October. In addition, coordinators will receive two new editions of the popular *Treasury of Stamps Album*, one related to the upcoming WORLD STAMP EXPO '89 and the other based on the stamps for issue in 1990.

Subsequent issues of *Stamp Fun* and *Leader Feature* will be published in October, December, February, and March, and a new BFSC coloring book will be available in January or February 1990.

—Philatelic and Retail Services Dept., 8-31-89.



Latest Index in PB 21735, 7-27-89.

CONTENTS

	Page
15-Cent America the Beautiful Postal Card	1
25-Cent Drafting of the Bill of Rights Commemorative Stamp	3
25-Cent Love Stamped Envelope	3
AUTOPOST™ Postage Strip	5
Annual Summary: Occupational Injuries/Illnesses	2
Benjamin Franklin Stamp Club Program	1
Directives Update	4
Domestic Orders	2
Earnings Statement: CS/SS	2
Foreign Order No. 277	4
Form 1769, <i>Accident Report (All Safety Offices)</i>	2
Handbook AS-707F Availability	6
Invalid Express Mail Corporate Account Numbers	6
Keyer Enhancement Program	12
Mail Alert	2
Missing Money Orders—U.S.	11
NCOA Service for Small Address Lists	6
National Count of Mail on All Rural Routes (<i>Correction</i>)	5
Plain Stamped Envelope Requisitions (<i>Correction</i>)	6
Rural Carrier Guarantee Period	5
Stamp Poster 89-28 (<i>Love Stamped Envelope</i>)	7
Stamp Poster 89-29 (<i>Drafting of the Bill of Rights Commemorative Stamp</i>)	9
Stamps Recalled From Philatelic Outlets	2
Withholding of Mail Orders	4

PROPERTY OF
LIBRARY
AUG 31 1989

Stamps Recalled From Philatelic Outlets

As of August 31, 1989, the Philatelic Sales Division will no longer sell the following postage stamps. They are, however, subject to future sale at post offices.

Item No.	Description
0099	11¢ Alden Partridge
0091	\$1.00 Bernard Revel

After August 31, any stock of the above items remaining at philatelic outlets must be returned to the main stock and handled according to Handbook F-1, *Post Office Accounting Procedures*, section 450. Post offices may continue to sell the above items at their regular windows until stock is exhausted.

The Inspection Service will give attention to this area during audit review.

—*Philatelic and Retail Services Dept., 8-31-89.*

Keyer Enhancement Program

The Keyer Enhancement Program (KEP), PEDC Course 51508-40, was implemented in field offices during A/P 11. KEP is a PEDC-administered diagnostic program that identifies problems and suggests potential corrections, including providing training for multiposition letter sorting machine (MPLSM) operator and system errors.

KEP is nondisciplinary and individual operator results are confidential. Correct use of this training program should reduce subsequent mail handlings and work hours at MPLSM-equipped offices.

Field training sites have been sent an initial distribution of the materials. Additional materials may be ordered from the Training Materials Distribution Center at PEN 268-5452 or Commercial (202) 268-5452.

—*Training and Development Dept., 8-31-89.*

All Safety Offices

Form 1769, Accident Report

Safety offices must ensure that all Forms 1769, *Accident Report*, including amendments and deletions, are completed and forwarded to the Employee and Labor Relations Information Center (ELRIC) by September 29 for inclusion in the Fiscal Year (FY) 1989 year-end reports.

FY 1989 year-end reports will not include accident reports received after September 29. Reports not received by the close-out date will be returned to the division for renumbering and resubmission to the ELRIC for inclusion in FY 1990 accident statistics.—*Employee Relations Dept., 8-31-89.*

Earnings Statement: CS/SS

Employees who currently have withholdings from pay for Child Support/Spousal Support have these deductions identified on the earnings statement as CS/SS.

Effective immediately, a one time message, Child/Support/Spousal Support, will appear at the bottom of the Earnings Statement when the deduction begins.—*Dept. of the Controller, 8-31-89.*

Annual Summary: Occupational Injuries/Illnesses

During the month of October, all field offices having 100 work years or more of employment in the regular work force should receive National Accident Reporting System (NARS) Report PBA030P1, Post Office Totals for Accounting Period 13, Fiscal Year 1989. According to Occupational Safety and Health Administration (OSHA) regulations, offices must post the report for 30 days for employees to see, and retain it for 5 years thereafter.—*Employee Relations Dept., 8-31-89.*

DOMESTIC ORDERS

False Representation. Enforced by postmasters at cities listed.

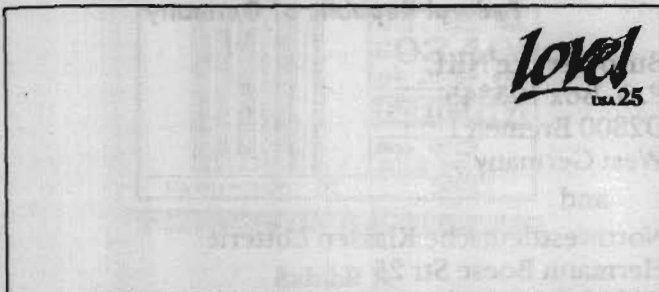
State/city	Names covered	Product
OH, Fairfield 45014-0194	Yellow Page Consumer Guide, P.O. Box 14194.	Directory solicitations.
OH, Monroe 45050-0499	Yellow Page Consumer Guide, P.O. Box 499.....	Directory solicitations.
IL, Oakbrook 60522-1785	Anthony J. Leonardo, a/k/a A. J. Leonardo, P.O. Box 1785.	The sale of plans to save postage.

—*Judicial Officer, 8-31-89.*

25-Cent Love Stamped Envelope

The 25-cent Love stamped envelope goes on sale September 22 in McLean, Virginia. This colorful new envelope, designed primarily for household mailers, will be available only in number 9 size.

Do Not Place on Sale Before September 23, 1989



Copyright U.S. Postal Service 1989

Collector information is on page 7.

Supply. Post offices with authorized philatelic centers will receive an automatic distribution of this envelope. Quantities will be based on the automatic distribution for a size 10 envelope. Those post offices should requisition additional quantities for their regular window transactions.

CAG A-G post offices requiring bulk quantities of this envelope must immediately submit Form 3205, *Requisition for Plain Stamped Envelopes*, to the Stamped Envelope Agency, U.S. Postal Service, Williamsburg, PA 16693-0500. Submit requisitions in the standard ordering quantities for a size 10, regular envelope. Refer to the price list chart on page 15 for the item number.

All other post offices requiring less than bulk quantities must immediately requisition this envelope on a separate Form 17-A, *Accountable Items Requisition From Stamped Distribution Office*, from their designated stamp distribution office.

Printed Stamped Envelopes. This envelope is also available with a printed return address for customers. The return address will be printed in dark blue to complement the indicia.

Customers should indicate the item number, size, denomination, and price on the blank lines of present Form 3203, *Printed Stamped Envelopes Order*, when placing orders. Customers should mail the form, with the proper remittance, in a preprinted business reply envelope furnished by the Postal Service or in a plain envelope addressed to the Stamped Envelope Agency, U.S. Postal Service, Williamsburg, PA 16693-0500. They must pay by check or money order. Refer to the price list on page 14 for item numbers.

—Philatelic and Retail Services Dept., 8-31-89.

The orange and blue pouch is to be used for Express Mail Service only.

25-Cent Drafting of the Bill of Rights Commemorative Stamp

The 25-cent Drafting of the Bill of Rights commemorative stamp goes on sale September 25 in Philadelphia, Pennsylvania. The Constitution Series issue marks the drafting of America's constitutionally guaranteed rights, a monumental feat in the forging of a new nation and the civil liberties enjoyed by all Americans today. Known as the Bill of Rights, these amendments guarantee every American citizen specific personal liberties, including freedom of speech and religion, the right to a fair and speedy trial, and protection from illegal search and seizure.

This is the fifth stamp issued in the Constitution Series this year.

Do Not Place on Sale Before September 26, 1989



Copyright U.S. Postal Service 1989

Issued in panes of 50.

Supply. All post offices will receive their standard automatic distribution quantities for a 50-subject commemorative stamp. *The Bureau of Engraving and Printing will not honor supplemental requisitions for item 4465.*

Regional accountable paper depositories (RAPDs) will receive limited quantities of this stamp for filling supplemental orders. Stamp distribution offices (SDOs) requiring additional stamps should order them from RAPDs using separate Forms 17-A, *Accountable Items Requisition From Stamp Distribution Office*. All other post offices requiring additional stamps should immediately requisition them from their SDOs on separate Forms 17-A.

Before requisitioning additional stock, post offices should consider that they must deplete the stock before November 26, 1989, except at authorized philatelic centers.

—Philatelic and Retail Services Dept., 8-31-89.

Directives Update

This update lists all new, revised, and obsolete directives since POSTAL BULLETIN 21735, July 27, 1989. See Publication 223 for ordering instructions. The revised list shows the oldest usable date; the new list indicates if the new directive rescinds another; and the obsolete list indicates if and by what the directive was replaced.

New Directives

Document and date	Title
LAB 104, 08-89	Penalty, Permit G-10, Fourth-Class
POS 72-A, 06-89	EEO Is the Law (Spanish-Field) (replaces POS 72, 06-81)
POS 72-B, 06-89	EEO Is the Law (Spanish-Headquarters) (replaces POS 72, 06-81)
POS 72-C, 06-89	EEO Is the Law (English-Headquarters) (replaces POS 72, 06-81)
POS 72-D, 06-89	EEO Is the Law (English-Field) (replaces POS 72, 06-81)
PUB 210, 04-89	FAXNET Guide

Revised Directives

Document and date	Title	Oldest usable date
HBK AS-809, 04-89	Directory of Information Resources User's Guide.	04-89
NOT 21, 08-89	13 Period Year Calendar—1990-1991.	08-89
NOT 28, 09-89	13 Period Year Calendar—1990-1991 (pocket card).	09-89
NOT 47, 05-89	National Change of Address	05-89

Obsolete Directives

Document and date	Title	Obsolete date
POS 46, 10-85	National Card and Letter Writing Week (not replaced).	07-20-89
POS 72, 06-81	EEO is the Law (English and Spanish versions) (replaced by POS 72-A, -B, -C, and -D, 06-89).	07-24-89

Note: It is important to order items with the type of identification used by the materiel distribution center computers. HBK represents Handbook; LAB, Label; MI, Management Instruction; NOT, Notice; POS, Poster; PUB, Publication; RI, Regional Instruction; SGN, Sign; TAG, Tag.

—Office of Information Services, 8-31-89.

All Personnel Processing Mail for Dispatch Abroad

Foreign Order No. 277

Keep all foreign order notices for use as reference.

Tentative Orders. A tentative *Lottery Order* has been issued against the following:

Federal Republic of Germany

Buro-Service NKL
P.O. Box 105345
D2800 Bremen 1
West Germany

and

Nordwestdeutsche Klassen Lotterie
Hermann Boese Str 25
D2800 Bremen 1
West Germany

W. Ruge
Heidenkampsweg 32
2000 Hamburg 1
West Germany

Do not dispatch any mail to the above. Place the mailpieces in a pouch endorsed Foreign Order Mail and send it to Postmaster, Claims, Inquiry & Undeliverable Mail, James A. Farley Building, Room 2029-A, New York, NY 10199-9543. Do not place any endorsement on the mailpieces themselves.

Installations may post this notice at the outgoing primary, and they must post it on the Foreign Order Board at all MSCs and designated International Exchange Officers.—*Judicial Officer, 8-31-89.*

Withholding of Mail Orders

Enforced by postmasters at cities listed.

State/city	Names covered
CA, Llano 93544-0070.....	Any and all of various names, including Bryant Publishing Company and Garry Lane Bryant, P.O. Box 70
PA, Indiana 15701-3336	Any and all of various names other than the surname of Yousaf, 951 Lilac Street, #2
KY, Covington 41011-3044	Any and all of various names other than the surnames of Smith, Floyd, and Enwright, 1111 Holman Avenue

Judicial Officer, 8-31-89.

Pile sacks evenly to avoid damage and to conserve space

AUTOPOST™ Postage Strip

A test of a new self-service system for weighing mailpieces and selling postage for domestic mail began on or about August 23, 1989. The system produces postage imprints similar to those shown in Exhibits A and B, which must be accepted as postage paid on domestic mail only.



Exhibit A



Exhibit B

Until further notice, only Washington DC 20043 and Kensington MD 20895 are valid issuing offices. The issuing office is shown on the bottom line of each postage strip. Accept only postage strips bearing the bar code of the destination ZIP Code as shown in Exhibit A or the USA logo shown in Exhibit B as evidence of postage paid.

Technology Resource Dept., 8-31-89.

All Offices With Rural Delivery

Rural Carrier Guarantee Period

Postal managers who supervise rural carriers must effectively manage those carriers who work under the provisions of the Fair Labor Standards Act (FLSA) section 7(b)(2). Rural carriers are paid overtime for all hours worked in excess of 2,080, up to 2,240, within the 52 consecutive week guarantee period. If a carrier actually works more than 2,240 hours within the guarantee period, The Agreement under FLSA section 7(b)(2) is considered void, and the carrier receives compensation for all hours actually worked during the guarantee period in accordance with FLSA section 7(a).

This year's guarantee period is from Saturday, November 5, 1988, through Friday, November 3, 1989. The guarantee period for next year will run from Saturday, November 4, 1989, through Friday, November 2, 1990.

—Delivery, Distribution, and Transportation Dept., 8-31-89.

Correction

National Count of Mail on All Rural Routes

POSTAL BULLETIN 21735, 7-27-89 (page 11), included instructions for conducting the national rural mail count and for completing related forms. The last section of the mail count article, Completion Requirements/Timeframes, was incomplete. To ensure proper and timely completion of the mail count requirements, this section appears below in its entirety.

Completion Requirements/Timeframes

Officials must complete two Forms 4241, *Rural Delivery Statistics Report*, for each route during the count period. Complete one for the first 2 weeks of the count and one for the last 2 weeks. At the completion of week 4, transfer the information recorded on both Forms 4241 to Form 4241-X, *Rural Delivery Statistics Report*.

Form 4241-X is not a materiel distribution center item. Management sectional centers (MSCs) must duplicate and distribute sufficient copies to meet the needs of all reporting units.

The postmaster or supervisor is responsible for daily completion of Form 4239, *Count of Mail*, transferring the information to Form 4241, completing two Forms 4241, and transferring all information to Form 4241-X.

In accordance with Handbook M-37, *Rural Delivery Carriers Duties and Responsibilities*, part 522.32, carriers must receive an opportunity to review all Forms 4241 for 2 full days before being requested to sign. *All Forms 4241 must be submitted to the MSC office not later than close of business (COB) October 7, 1989.*

By COB October 27, 1989, all data must be entered into the Direct Data Entry System (DDE). *Data input may begin October 10, as the first completed forms are received and reviewed.* Do not submit Form 4241 or 4241-X to the postal data centers (PDCs). The MSC retains the PDC copy of this form.

MSCs should notify NRLGA state stewards of the date, time, and locations of MSC national count training sessions conducted in their states. Allow each state steward administrative leave to attend one of these sessions. State stewards may attend other MSC national count training sessions provided they take approved annual leave or leave without pay (LWOP). Make every effort to avoid mail count training sessions during the week of August 15 through 18.

—Delivery, Distribution, and Transportation Dept., 8-31-89.

SAFETY IS NO ACCIDENT

NCOA Service for Small Address Lists

The U.S. Postal Service awarded a license to First Data Resources (FDR) to perform National Change of Address (NCOA) service for mailers who maintain small address lists on diskette. In the past, many would-be customers of NCOA service have indicated that licensees have structured their offerings to make the cost prohibitive for small name and address list owners and maintainers to use the NCOA system.

Now the Postal Service will collect floppy diskettes in various formats at the National Address Information Center and submit them to FDR for NCOA processing. The cost is .009 cents per address run, or \$9 per thousand. Neither minimum nor maximum address quantities are required. FDR will perform the service within 7 days after receipt of the diskettes.

—Operations Systems and Performance Dept., 8-31-89.

Handbook AS-707F—Availability

A new Handbook AS-707F, *Contracting for Contract Postal Units*, dated July 1, 1989, has been issued.

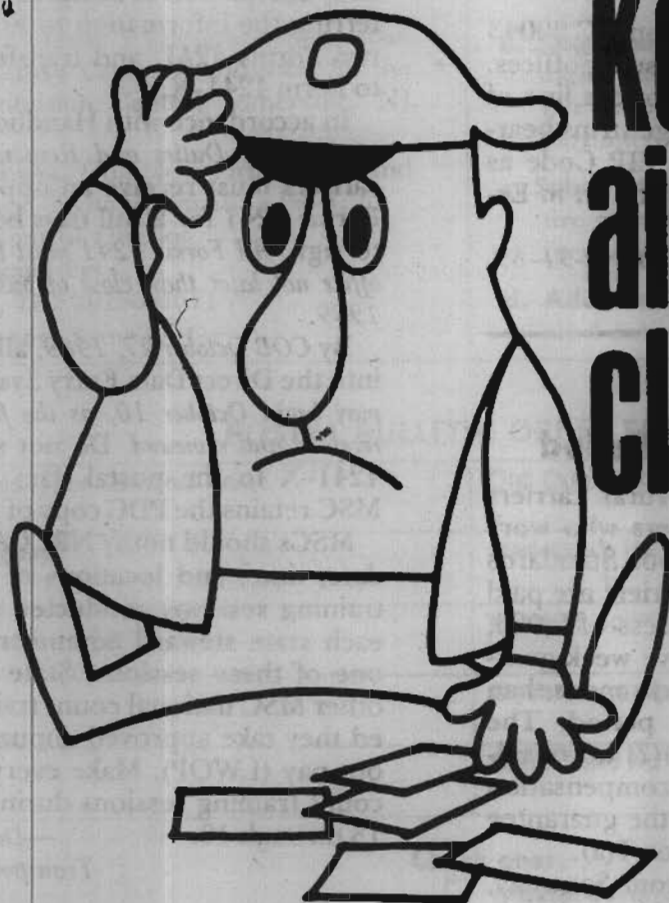
Authorized offices may use Form 7380, *MDC Supply Requisition*, to requisition additional copies of Handbook AS-707F from the materiel distribution centers.—Procurement and Supply Dept., 8-31-89.

Correction

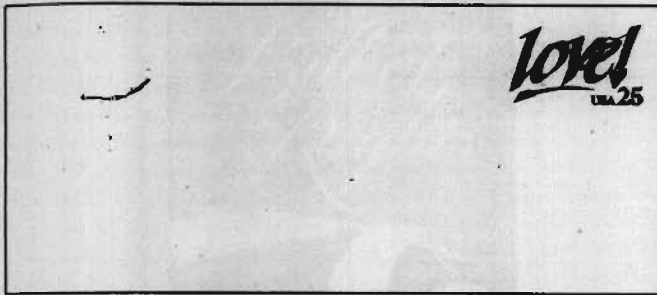
Plain Stamped Envelope Requisitions

The article, Plain Stamped Envelope Requisitions, in POSTAL BULLETIN 21736, 8-3-89 (page 2), did not show when ZIP Codes 936-969 are to order plain stamped envelopes. All ZIP Codes from 930-999 should submit requisitions for plain stamped envelopes in the 4th week of each A/P.

—Philatelic and Retail Services Dept., 8-31-89.



Keep aisles clear



Copyright U.S. Postal Service 1989

Issue Date: September 22, 1989
 First Day City: McLean, Virginia
 Designer: Tim Girvin,
 Seattle, Washington
 Art Director: Derry Noyes, Design Coordinator,
 Citizens' Stamp Advisory Committee
 Printing Process: Offset flexography, by Westvaco
 U.S. Stamped Envelope Agency
 Williamsburg, Pennsylvania
 Colors: Dark blue and red (indicia),
 light blue (diagonal stripes),
 and medium blue (copyright notice)
 Size: 3 $\frac{1}{4}$ x 8 $\frac{1}{4}$ inches
 Copyright: © USPS 1989

Love Stamped Envelope

A colorful 25-cent Love stamped envelope will be issued September 22 in McLean, Virginia. The dedication ceremony will be held in conjunction with opening festivities of the first joint convention of the American First Day Cover Society and the Universal Ship Cancellation Society. The envelope, designed primarily for household mailers, will be available only in number 9 size.

The design, by Tim Girvin of Seattle, Washington, portrays Love in red, italic lettering. A blue pen-stroke underscores the word, while an additional vertical blue stroke combines with a small red heart to form an exclamation mark. Light blue diagonal stripes wrap around the envelope.

The price of a single envelope is 30 cents. Boxes of 500 costs \$136. As with previously issued envelopes, the Love envelope also may be ordered with a preprinted return address. Packs of 50 cost \$15.20 and boxes of 500, \$139.50. The return address will be printed in dark blue to complement the postage design. Orders should be addressed: Stamped Envelope Agency, U.S. Postal Service, Williamsburg, PA 16693-0500.

Procedures for ordering first-day cancellations follow.

Customers Providing Stationery: The Postal Service encourages customers to purchase the Love envelopes at post offices and philatelic centers. Customers who provide their own envelopes receive preferential service. They should address envelopes at least $\frac{1}{4}$ inch from the bottom. Customers may affix uncanceled stamps issued before September 22. The Postal Service will return unserviced envelopes bearing stamps issued after that date. Requests must be postmarked by October 22 and addressed: Customer-Provided Stationery, Love Envelope, Postmaster, McLean, VA 22101-9991.

Postal Service Providing Stationery: Customers should provide a peelable return address label for each envelope. The price is 30 cents per envelope, and the Postal Service accepts personal checks in the exact amount up to the limit of 50 items. Orders must be postmarked by October 22 and addressed: Love Envelope, Postmaster, McLean, VA 22101-9992.



A *Philatelic Catalog*, listing all available stamps and other philatelic items, is available here or from the Philatelic Sales Division, Washington, DC 20265-9997.

USPS Stamp Poster 89-28
 Remove after October 22

PLEASE POST ON BULLETIN BOARD



Copyright U.S. Postal Service 1989

Issue Date: September 25, 1989
 First Day City: Philadelphia, Pennsylvania
 Designer: Lou Nolan, McLean, Virginia
 Typographer: Julian Waters,
 Gaithersburg, Maryland
 Art Director: Derry Noyes, Design Coordinator,
 Citizens' Stamp Advisory Committee (CSAC)
 Postal Service Manager: Joe Brockert,
 Program Manager for Philatelic Design
 Engravers: Gary Slaght (lettering and eagle),
 Kenneth C. Wiram (Stars and Stripes),
 Bureau of Engraving and Printing (BEP)
 Modeler: Peter Cocci (BEP)
 Printing Process: Offset/intaglio (D Press, BEP)
 Colors: Red, blue, and black (offset);
 Black (intaglio)
 Image Area: 0.84 x 1.41 inches
 or 21.3 x 25.8 millimeters
 Plate Numbers: Three offset, one intaglio
 Stamps per Pane: 50
 Marginal Markings: ©U.S. Postal Service 1989
 Use Correct ZIP Code®

Drafting of the Bill of Rights Commemorative Stamp

The new 25-cent Constitution Series stamp commemorating the bicentennial of the drafting of the Bill of Rights will be issued September 25 in Philadelphia, Pennsylvania. The dedication ceremony will be held in Congress Hall at the Independence National Historical Park.

Constitutional opponents led by Virginia's George Mason criticized the document for its lack of fundamental freedoms and individual liberties. Contesting that position, James Madison and his followers argued that personal guarantees were unnecessary since such liberties were inherent in the Constitution.

Ironically, it was Madison who began drafting the original Bill of Rights. Armed with nearly 200 state-ratified amendments, the Father of the Constitution composed a lengthy first draft that eventually became a dozen final proposals.

On September 25, 1789, delegates from the House of Representatives and the U.S. Senate met in Congress Hall and approved 12 amendments to the U.S. Constitution. Two of these suggestions concerning the size of the House of Representatives and congressional salaries were not ratified. The remaining 10, known today as the Bill of

Rights, guarantee every American citizen specific personal liberties, including freedom of speech and religion, the right to a fair and speedy trial, and protection from illegal search and seizure.

Procedures for ordering first day cancellations follow.

Customers Affixing Stamps. The Postal Service encourages customers to purchase the Drafting of the Bill of Rights stamps and affix them to their envelopes. Covers bearing stamps receive preferential service. Customers must address envelopes on the right side at least $\frac{5}{8}$ from the bottom and affix stamps approximately $\frac{1}{4}$ inch from the top and right edges. Requests must be postmarked by October 25 and addressed: Customer Affixed Envelopes, Drafting of the Bill of Rights Stamps, Postmaster, Philadelphia, PA 19104-9991. No return is required.

Postal Service Affixing Stamps. The price is 25 cents per stamp. The Postal Service accepts checks in the exact amount up to the limit of 50 envelopes. Customers should not send cash or postage stamps. Orders must be postmarked by October 25 and addressed: Drafting of the Bill of Rights Stamps, Postmaster, Philadelphia, PA 19104-9992.

After offices deplete local stocks of the item, it is available from all philatelic centers and by mail order from the Philatelic Sales Division for approximately 1 year after the date of issue. A *Philatelic Catalog*, listing all available stamps and other philatelic items, is available here or from the Philatelic Sales Division, Washington, DC 20265-9997.



USPS Stamp Poster 89-29
 Remove after October 25

PLEASE POST ON BULLETIN BOARD



Copyright U.S. Postal Service 1982

Drafting of the Bill of Rights Commemorative Stamp

The 25-cent Commemorative Stamp being issued to mark the Bicentennial of the drafting of the Bill of Rights will be issued September 25 to celebrate the anniversary of the signing of the Bill of Rights. The stamp features a stylized figure holding a torch, with the number '25' in the upper right corner.

The stamp is a tribute to the Bill of Rights, which was drafted in 1789. It is a commemorative stamp issued by the U.S. Postal Service to mark the 100th anniversary of the signing of the Bill of Rights. The stamp is 25 cents and features a stylized figure holding a torch, with the number '25' in the upper right corner.

The stamp is a tribute to the Bill of Rights, which was drafted in 1789. It is a commemorative stamp issued by the U.S. Postal Service to mark the 100th anniversary of the signing of the Bill of Rights. The stamp is 25 cents and features a stylized figure holding a torch, with the number '25' in the upper right corner.

The stamp is a tribute to the Bill of Rights, which was drafted in 1789. It is a commemorative stamp issued by the U.S. Postal Service to mark the 100th anniversary of the signing of the Bill of Rights. The stamp is 25 cents and features a stylized figure holding a torch, with the number '25' in the upper right corner.

The stamp is a tribute to the Bill of Rights, which was drafted in 1789. It is a commemorative stamp issued by the U.S. Postal Service to mark the 100th anniversary of the signing of the Bill of Rights. The stamp is 25 cents and features a stylized figure holding a torch, with the number '25' in the upper right corner.

The stamp is a tribute to the Bill of Rights, which was drafted in 1789. It is a commemorative stamp issued by the U.S. Postal Service to mark the 100th anniversary of the signing of the Bill of Rights. The stamp is 25 cents and features a stylized figure holding a torch, with the number '25' in the upper right corner.

For more information on the Bill of Rights Commemorative Stamp, contact the U.S. Postal Service, Washington, DC 20262-7000. The stamp is available for purchase at all post offices.

For more information on the Bill of Rights Commemorative Stamp, contact the U.S. Postal Service, Washington, DC 20262-7000. The stamp is available for purchase at all post offices.

MISSING U.S. MONEY ORDER FORMS—DO NOT CASH

To be posted and used by window clerks. As directed, destroy previous notices. Any interim notices should be destroyed when the numbers listed appear in the POSTAL BULLETIN. The actual serial numbers consist only of the first 10 digits on the money orders. **A. New Style.** (Listed below) Destroy PB 21739 listing. PB 21461 listing for B Old Style (Gray) remains valid. Retain C Counterfeit PB 21470 listing. **Reminder**—check for altered dollar amounts by holding money order to the light. Do not cash money orders with ZIP 99099.

302 000 0000 to	360 112 8583 to 8599	373 390 2301 to 2399	393 584 7566 to 7699
302 123 9999	360 134 2600 to 2699	373 390 2518 to 2599	393 650 0074 to 0099
330 402 2100 to 2199	360 135 5611 to 5699	373 390 2604 to 2699	393 838 8316 to 8499
330 726 8851 to 8891	360 135 8159 to 8199	373 463 0902 to 0999	393 893 6007 to 6099
330 982 3100 to 3199	360 172 1404 to 1499	374 022 8105 to 8199	394 126 6907 to 6999
331 201 5539 to 5599	360 257 2100 to 2199	374 692 8858 to 8899	394 189 0405 to 0599
331 468 0700 to 0799	360 282 4600 to 4699	374 768 2600 to 2699	394 822 3243 to 3278
331 631 5705 to 6099	360 403 8453 to 8499	374 795 2118 to 2199	394 990 1810 to 1899
331 643 7553 to 7599	360 418 0700 to 0799	375 169 4400 to 4599	395 343 5264 to 3299
331 890 8100 to 9099	360 419 6700 to 6799	375 637 9137 to 9199	395 396 9649 to 9799
331 960 6019 to 6199	360 535 5648 to 5657	375 637 9365 to 9999	395 970 3240 to 3299
331 966 6733 to 6799	360 762 9368 to 9399	375 744 7930 to 7999	397 622 4054 to 4099
340 044 0851 to 0861	361 142 2817 to 2899	375 829 3400 to 3499	397 819 8902 to 8999
340 283 0024 to 0100	361 440 9240 to 9299	375 851 9100 to 9199	398 149 7200 to 7699
340 367 3100 to 3199	361 754 9300 to 9499	376 850 0813 to 0899	399 070 0872 to 0899
340 624 5530 to 5549	361 782 4204 to 4299	376 855 6764 to 6999	399 156 7119 to 7199
340 761 4101 to 4299	361 974 6811 to 6999	376 903 0721 to 0738	399 203 5064 to 5099
341 168 4000 to 4999	362 246 6800 to 6899	376 906 3206 to 3299	399 296 9909 to 9999
341 818 4173 to 4199	362 299 8900 to 8999	377 113 7461 to 7499	399 792 7775 to 7799
341 999 8038 to 8052	362 861 3064 to 3099	377 224 2300 to 2599	399 792 8300 to 8399
342 068 7623 to 7699	363 130 1575 to 1599	377 955 4285 to 4399	399 396 8935 to 8999
342 442 5051 to 5093	363 130 4500 to 4599	378 029 9347 to 9399	399 396 8935 to 8999
342 442 6402 to 6499	363 374 9010 to 9099	378 085 3679 to 3699	400 427 1051 to 1999
342 511 0441 to 0457	363 444 9333 to 9399	378 210 9090 to 9099	401 045 1505 to 1549
344 091 7382 to 7499	363 560 5050 to 5099	378 351 1063 to 1099	401 045 1571 to 1599
344 130 6283 to 6299	363 851 4259 to 4299	378 630 9489 to 9599	401 294 2700 to 2799
344 175 9580 to 9589	363 853 7582 to 7799	379 128 9584 to 9599	401 310 9505 to 9599
344 850 1600 to 1699	363 861 7600 to 7899	379 509 2600 to 2699	403 260 7000 to 7499
346 654 0669 to 0699	363 904 4540 to 4999	379 679 8060 to 8099	402 578 7876 to 7899
346 693 2520 to 2599	363 922 5744 to 5799	379 843 5100 to 5199	403 125 6744 to 6799
347 338 4188 to 4199	363 930 9400 to 9699	380 093 9600 to 9611	403 685 8600 to 8699
347 458 7148 to 7199	363 965 7892 to 7999	380 165 1165 to 1199	404 003 0300 to 0399
347 492 6411 to 6499	364 467 6102 to 6199	380 489 6800 to 6899	404 041 8838 to 8899
347 641 3780 to 3799	364 826 1081 to 1099	380 572 1840 to 1899	404 071 4268 to 4299
347 645 0367 to 0399	365 512 9428 to 9499	381 077 3600 to 3699	404 347 5356 to 5399
347 696 3806 to 3899	365 693 4200 to 4299	381 325 4500 to 4599	404 347 5548 to 5599
348 010 8305 to 8399	365 842 7960 to 7999	381 540 9900 to 9999	404 726 4500 to 4599
348 036 3713 to 3799	365 997 7565 to 7699	381 604 2510 to 2699	404 961 5001 to 5199
348 036 4366 to 4599	366 205 2072 to 2099	381 645 9525 to 9599	405 325 0188 to 0198
348 412 9028 to 9099	366 772 6702 to 6799	381 924 0748 to 0799	406 009 4572 to 4586
348 535 1703 to 1728	366 998 7669 to 7681	383 156 6968 to 6999	406 260 6830 to 6899
348 714 5286 to 5299	367 303 6006 to 6099	383 156 7128 to 7199	406 733 3000 to 3999
348 755 7904 to 7999	367 396 9705 to 9799	383 156 7300 to 7999	407 545 1556 to 1599
349 116 6533 to 7499	367 396 9900 to 9999	383 299 2081 to 2099	407 594 0412 to 0599
349 389 9242 to 9299	367 428 8800 to 8999	383 314 3968 to 3999	407 692 9100 to 9299
349 392 8081 to 8099	367 519 6700 to 6899	383 892 1000 to 1344	408 499 7700 to 7799
349 615 0000 to 0099	368 371 3923 to 3999	383 892 1382 to 1399	408 499 7900 to 7999
349 746 2056 to 2099	368 730 7825 to 7899	385 568 2330 to 2399	411 924 4000 to 4599
349 910 0000 to 0399	368 854 6200 to 6299	385 599 7554 to 7575	418 164 6500 to 6799
350 017 1652 to 2199	368 978 0561 to 0599	385 774 2024 to 2099	700 065 2570 to 2599
350 251 5100 to 5199	369 345 0188 to 0199	387 314 5574 to 5599	802 678 2605 to 2699
350 366 1104 to 1119	369 674 8141 to 8199	389 696 2400 to 2799	803 605 2840 to 2899
350 366 1145 to 1166	369 718 3783 to 3799	390 001 3182 to 3199	803 605 6300 to 6499
350 518 7350 to 7374	370 193 8257 to 8299	390 001 3500 to 3699	805 323 5006 to 5024
351 110 4900 to 4999	371 241 3118 to 3199	390 545 5974 to 5999	805 466 7255 to 7299
351 113 4615 to 4699	371 630 0100 to 0199	391 104 6146 to 6199	806 015 3885 to 3899
351 113 4800 to 4999	372 308 4180 to 4199	391 783 3020 to 3599	806 087 1100 to 1499
360 003 2454 to 2499	372 311 5400 to 5499	391 792 6100 to 6199	806 268 9275 to 9299
360 037 4500 to 4549	372 360 8303 to 8399	392 668 2956 to 2999	806 534 3400 to 3477
360 038 0502 to 0599	372 407 1025 to 1099	392 854 8500 to 8899	990 117 5600 to 5999

MAIL ALERT

The mailings shown below will be deposited in the near future. Offices should attempt to honor the requested home delivery dates, but not at an additional expense. Mailers wishing to participate in these alerts, for mailings of one million pieces or

more, should contact the National Accounts Division at (202) 268-2207, no later than the 15th of the month preceding the month of the requested delivery dates.

Title on mailings	Class and type of mail	Requested delivery dates	Number of pieces	Distribution	Presort level	Comments
JC Penney Champions of Style.	Third, Letter.	8/30-9/1	1 million	Nationwide ...	CARRT, 5 Digit.	Origin of mailing Harte Hanks.
FEDCO Reporter	Third	9/1-5	2 million	So. California.	CARRT, 5 Digit.	Origin, RR Donnelley & Sons, Torrance, CA.
Best '89 Sensational Sept. Savings.	Third	9/1-6	9.9 million ...	Nationwide ...	CARRT	Mail is verified and accepted inplant, BMAU Brown Printing, Franklin, KY 42134.
Sears "NK" Hardware Circular.	Third, BBM, Flats.	9/1-8	3.8 million ...	Nationwide ...	CARRT	24 pages, 8x10% in. Circular.
Sears "E/C" Christmas Catalog.	Fourth, Bound Printed Matter.	9/1-15	9.5 million ...	Nationwide ...	CARRT	48-page catalog, 8x10% in.
Covenant House.....	Third, Mach. Parcels.	9/1-29	1.1 million ...	Nationwide, Heavy NY & Metro.	5 Digit, Basic.	Origin Wilton, NH.
Paralyzed Veterans of America.	Third, Flats...	9/1-10/15	8 million	Nationwide ...	CARRT, 5 Digit, Basic.	Origin Wilton, NH.
Eastern Paralyzed Veterans Assoc.	Third, Flats...	9/1-10/15	6 million	Northeast, Eastern, Ohio.	CARRT, 5 Digit, Basic.	Origin Wilton, NH.
Carol Wright, New Age	BBM.....	9/2-6	13 million	Nationwide ...	CARRT	6x9 in. natural kraft envelope.
Carol Wright, Hispanic	BBM.....	9/2-6	3 million	Nationwide ...	CARRT	6x9 in. natural kraft envelope.
JC Penney Fall Sale	Third, Catalog.	9/5-7	8 million	Nationwide ...	CARRT, 5 Digit.	Origin of mailing, RRD/Spartanburg, SC.
JC Penney, Frances Denney Cosmetics.	Third, Card ..	9/5-7	1 million	Nationwide ...	CARRT	Frances Denney.
Williams Sonoma/Catalog for Cooks, Fall 1989.	Third, Flats...	9/5-7	5.2 million ...	Nationwide ...	CARRT, 5 Digit, Basic.	Origin of mailing Foote & Davies, Atlanta, Beginning 8/26-8/30: Digest size with strawberries on front cover and two jelly jars on back.
Jane Tucker Supermarket of Savings Young Parent Edition.	Third, Letters.	9/5-22	5 million	Nationwide ...	CARRT, 5 Digit.	6x9 in. blue and white envelope, time-sensitive coupons.
JC Penney Baby Your Baby.	Third, Flat	9/6-8	1.8 million ...	Nationwide ...	CARRT	Mailing Services of Pittsburgh.
JC Penney Fall Wardrobe Sale.	Third, Flat	9/6-8	4 million	Nationwide ...	CARRT	Arandel Schmidt.
Sears Retail.....	Third, Flats...	9/11-13	5 million	Nationwide ...	CARRT, SEC SEG, Address.	Or Current Resident endorsement.
Cable Direct/MCN.....	Third, Flats...	9/11-14	1.2 million ...	Nationwide ...	CARRT	Origin of mailing Foote & Davies, Lincoln, NE. Coupon Booklet: 72 pages, 5 1/2 x 8 in.
The Elks Magazine.....	Third, Bulk Business.	9/11-21	1.5 million ...	Nationwide ...	CARRT, 5 Digit, Basic.	The Elks magazine membership mailing.

MAIL ALERT—Continued

Title on mailings	Class and type of mail	Requested delivery dates	Number of pieces	Distribution	Presort level	Comments
Neiman Marcus Christmas Catalog.	Third, Flats...	9/15-10/9	2.7 million	Nationwide ...	CARRT.....	Polywrapped, 15.2 oz./piece, 1.1 million pieces plant-loaded Case-Hoyt, Rochester, NY. 1.7 million entered at 50 additional entry points at 4th class (bound printed matter) rates per DMM 611.5.
House of Fabrics Lint Remover.	Third, Postcard.	9/14-16	1.7 million	Nationwide ...	CARRT, 5 Digit, Basic.	Sale 9/17-9/27, 5x8 in. postcard. Origin, Al White's, Tempe, AZ.
Sears "AC/LL" Fashion Mailer.	Third, BBM, Flats.	9/15-22	3.8 million	Nationwide ...	CARRT.....	48-page catalog, 8x10 1/4 in.
October Vogue.....	Second Class.	9/15-26	1 million	Nationwide ...	CARRT, 5 Digit, Basic.	2.2 pound, 90% palletized, plant load.
Carol Wright	BBM.....	9/16-19	38 million	Nationwide ...	CARRT.....	6x9 in. natural kraft envelope.
Sears	Third	9/18-20	10 million	Nationwide ...	CARRT, SEC SEG, Address.	Or Current Resident endorsement.
Pottery Barn	Third, Flats...	9/18-20	2.2 million	Nationwide ...	CARRT, 5 Digit.	Origin of Mailing: Foote & Davies, Lincoln, NE. Front Cover: dining room set with covered chairs.
Gardener's Eden	Third, Flats...	9/18-20	2.2 million	Nationwide ...	CARRT, 5 Digit, Basic.	Origin of Mailing: Foote & Davies, Lincoln, NE. Front Cover: brick porch steps with potted plant.
Best '89 Summer's End.....	Third	9/18-21	8.9 million	Nationwide ...	CARRT.....	Mail is verified and accepted inplant, BMAU Brown Printing, Franklin, KY 42154.
Billy Graham Letter	Third, Letter.	9/18-29	1.6 million	Nationwide ...	CARRT, 5 Digit.	3 3/4 x 7 1/2 in. envelope from Minneapolis, MN.
JC Penney Intimate Thoughts by Adonna.	Third, Card ..	9/20-22	1 million	Nationwide ...	CARRT.....	Mailing Services of Pittsburgh.
JC Penney Fernand Aubry Cosmetics.	Third, Card ..	9/20-22	1 million	Nationwide ...	CARRT.....	Mailing Services of Pittsburgh.
Sears "HD" Home Fashion Catalog.	Third, BBM, Flats.	9/20-27	8.5 million	Nationwide ...	CARRT.....	60-page catalog, 8x19 1/4 in.
Sears "K" Catalog.....	Third, BBM, Flats.	9/23-30	15.5 million ..	Nationwide ...	CARRT.....	96-page catalog, 8x10 1/4 in.
Jane Tucker Supermarket of Savings Preschool Edition.	Third, Letters.	9/25-10/18	7 million	Nationwide ...	CARRT, 5 Digit.	6x9 in. blue and white envelope, time-sensitive coupons.
JC Penney Preholiday.....	Third, Catalog.	9/26-28	8 million	Nationwide ...	CARRT, 5 Digit.	Origin of Mailing RRD, Spartanburg, SC.
House of Fabrics Halloween Headquarters.	Third, Catalog.	9/26-28	2.2 million	Nationwide ...	5 Digit, Basic.	10x10 in. 16-page self-mailer. Sale dates 10/1-10/14. Facing slips and bag tags. Origin, Al White's, Tempe, AZ.
Decision Magazine	Third, Flats...	9/27-10/2	1.7 million	Nationwide ...	CARRT, 5 Digit.	8 3/4 x 10 1/4 in. 44-page tabloid from Minneapolis, MN.

—Marketing Dept., 8-31-89.

U.S. POSTAL SERVICE

PRICE LIST FOR PRINTED STAMPED ENVELOPES

August 1989

NONPROFIT ENVELOPES

Only nonprofit organizations or associations authorized under DOMESTIC MAIL MANUAL 623 that hold permits for the mailing of bulk third-class matter may purchase nonprofit envelopes. Nonprofit envelopes are sold only in full box lots of 500.

WINDOW ENVELOPES

Window envelopes are sold only in full box lots of 500. All windows are 1 1/8 inches wide and 4 3/4 inches long. The windows are located 5/8 of an inch from the bottom of the envelope and 1 inch from the left edge.

ENVELOPE DIMENSIONS	
Style 6 3/4	3 5/8 x 6 1/2 in
Style 7.5	5 x 7 1/2 in
Style 9	3 7/8 x 8 7/8 in
Style 10	4 1/8 x 9 1/2 in
All dimensions may be plus or minus 1/16 in.	

PRINTING

Envelopes with printed return addresses are available from the U.S. Postal Service, Stamped Envelope Agency, Williamsburg, PA 16693-0500. Please ask window clerk for an order form postage paid envelope and Notice 18, *Printed Embossed Stamped Envelopes from the USPS*. The return address or other printing may be privately printed on plain stamped envelopes, in any style, provided at least 3 1/2 inches of clear space is left at the right end of the address side of the envelope.

Envelope Type	Style	Denomination	Item Number	50	500	1,000
Standard—Printed						
Regular	6 3/4	25¢	2651		\$134.90	\$269.80
	10	25¢	2151		136.90	273.80
Window	6 3/4	25¢	2652		135.50	271.00
	10	25¢	2152		137.50	275.00
Regular (Household)	6 3/4	25¢	2661	\$15.00		
	10	25¢	2161	15.20		
Window (Household)	6 3/4	25¢	2662	15.10		
	10	25¢	2162	15.30		
Nonprofit—Printed						
Nonprofit	6 3/4	8.4¢	2666		\$51.90	\$103.80
(Regular)	10	8.4¢	2166		53.90	107.80
Nonprofit	6 3/4	8.4¢	2667		52.50	105.00
(Window)	10	8.4¢	2167		54.50	109.00
Other—Printed						
Holiday	7.5	25¢	2171		\$136.90	\$273.80
Holiday (Household)	7.5	25¢	2173	\$15.20		
Philatelic	9	25¢	2121		136.90	273.80
Philatelic (Household)	9	25¢	2120	\$15.20		
Security	9	25¢	2154		139.50	279.00
Security (Household)	9	25¢	2155	\$15.20		
Love	9	25¢	2168		139.50	279.00
Love (Household)	9	25¢	2169	\$15.20		

U.S. POSTAL SERVICE

PLAIN STAMPED ENVELOPE PRICE LIST

August 1989

Envelope Type	Style	Denomination	Item No.	Less than 500 each	500	1,000
Standard—Plain						
Regular	6¾	25¢	2651	30¢	\$131.40	\$262.80
	10	25¢	2151	30¢	133.40	266.80
Window.....	6¾	25¢	2652	132.00	264.00
	10	25¢	2152	134.00	268.00
Double Window.....	10	25¢	2153	137.00	274.00
Nonprofit—Plain						
Nonprofit.....	6¾	8.4¢	2666	\$48.40	\$96.80
(Regular).....	10	8.4¢	2166	50.40	100.80
Nonprofit.....	6¾	8.4¢	2667	49.00	98.00
(Window).....	10	8.4¢	2167	51.00	102.00
Other—Plain						
Security (Regular).....	9	25¢	2154	30¢	\$136.00	\$272.00
Philatelic Mail (Regular).....	9	25¢	2121	30¢	133.40	266.80
Holiday (Regular).....	7.5	25¢	2171	30¢	133.40	266.80
Love (Regular).....	9	25¢	2168	30¢	136.00	272.00

SALES AT POST OFFICES

Regular and other envelopes are available in any quantity, except nonprofit.

NONPROFIT ENVELOPES

Only nonprofit organizations or associations authorized under DOMESTIC MAIL MANUAL 623 that hold permits for the mailing of bulk third-class matter may purchase nonprofit envelopes. Nonprofit envelopes are sold only in full box lots of 500.

WINDOW ENVELOPES

Window envelopes are sold only in full box lots of 500. Standard windows are 1½ inches high and 4¾ inches wide and are located ¾ of an inch from the bottom of the envelope and 1 inch from the left edge. On double windows, the second window (designed for a return address) is located ½ inch from the top and left edges, and measures ¾ inch high and 2½ inches wide.

ENVELOPE DIMENSIONS	
Style No. 6¾.....	3½ x 6½ in
Style No. 7.5.....	5 x 7½ in
Style No. 9.....	3¾ x 8¾ in
Style No. 10.....	4½ x 9½ in
All dimensions may be plus or minus ⅛ in.	

INVALID EXPRESS MAIL CORPORATE ACCOUNT NUMBERS

To be posted and used by retail/acceptance clerks. This supersedes all previous notices. Destroy PB 21739 listing. Retail/acceptance clerks must not accept Express Mail shipments bearing any of the invalid numbers (listed below) in the "customer number" or "agreement number" section of the label or form.

Note: The first 6 digits of a 9-digit Custom Designed Service and Next Day Pickup Service Agreement make up the Corporate Account Number.

008148	028257	068626	089444	101318	117452	191897	209101	282359	301267	303779	327167	332001
009755	028306	068674	089445	101352	117545	191915	209120	282375	301269	303800	327219	332027
009783	028319	068728	089463	101380	117624	191967	212249	282424	301271	303841	327250	332029
009814	028331	068759	089489	101435	117707	192094	212253	282426	301333	303844	327347	332083
010052	028377	068795	089540	101462	117946	192109	212300	282444	301386	303965	327366	332202
010110	028414	068835	089638	101518	118027	192118	212375	282507	301395	303989	327376	332215
010122	028482	068876	089657	101534	118035	192147	212397	283149	301415	303992	327385	332221
010129	029050	068892	090025	101552	118062	192259	212413	283165	301418	305011	327403	332260
010194	029118	068925	090064	101589	118098	192347	212419	283173	301450	312137	328221	332262
011092	029176	068936	090140	101645	118165	193184	212520	283174	301464	312146	328384	332283
011122	029310	068954	090147	101706	118170	193209	212544	283179	301480	312211	328396	332388
011132	029425	068969	090168	101833	118226	193225	212556	283316	301488	312233	328402	332408
016113	029649	070571	090184	101905	118309	193283	212563	283328	301502	314121	328434	332444
016249	030013	071529	090246	102059	118329	193326	212572	292325	301677	314126	328435	332457
016467	030118	071617	090250	102154	119052	196075	212582	292355	301683	314158	328480	332475
016374	030133	071716	090257	102176	119113	198008	212601	293003	301698	314163	329027	332481
016775	030134	071827	090422	102202	119357	198060	212617	293123	301715	314194	329175	332551
016789	031045	071947	090518	102215	120139	198071	212637	293128	301719	314351	329209	332581
016799	031058	075219	090523	102249	120162	198076	212668	293136	301768	314540	329218	332600
018145	031082	075341	090608	102355	121136	198077	212704	293220	301785	314570	329267	332686
018233	033009	075426	090623	102307	121171	200020	212738	294188	301799	314603	329304	332702
018271	034003	075463	090721	102431	122119	200502	212757	294229	301858	314621	329330	332760
018290	034011	076226	090759	102459	122147	200531	220127	294236	301884	314630	329336	332768
018301	034311	076266	090774	102482	126008	200541	220163	294281	301900	314665	329341	332784
018308	037007	076270	090785	102605	128502	200612	220192	294349	301903	314670	329398	332848
018347	038077	076289	090805	102645	128507	200622	220209	294366	301906	314676	329519	332875
018395	038093	076309	090819	102694	128911	200668	221045	294376	301938	314714	330005	332914
018427	038097	076400	090861	102703	129806	200727	221159	294516	301948	314925	330088	332928
018496	038107	076411	090900	102753	130891	200740	221183	295120	301959	317162	330135	333002
018600	038114	076485	090902	102789	132210	200777	222105	295200	302040	319056	330153	333018
019138	038116	076531	090904	102813	132238	200805	222124	295263	302049	320725	330160	333044
019152	038120	077514	090905	102819	132248	200855	223025	295294	302064	320731	330193	333047
019157	038188	077565	090906	102844	135167	200890	223109	296226	302075	320803	330212	333065
019212	040018	077578	090907	102854	135182	200909	223110	296238	302084	320823	330262	333069
019225	041085	077613	090909	102940	139067	207110	223111	296273	302086	320826	330289	333073
019238	041119	077668	090910	103089	142233	207112	223126	300025	302117	320900	330295	333079
019777	042036	077672	090912	105013	142257	207124	232170	300060	302148	320902	330347	333080
020055	044036	077676	090916	105077	142514	207127	235148	300085	302153	320941	330365	333089
020065	046009	077741	090917	105089	146178	207133	247103	300094	302156	320946	330378	333094
021268	047020	077747	090918	105156	146259	207138	253092	300123	302177	320963	330490	333107
021389	050031	077991	090919	105193	146283	207144	253141	300157	302180	322384	330504	333132
021391	050036	078096	090920	105197	146295	207145	253154	300159	302192	322395	330514	333147
021506	053006	078135	091025	105245	146335	207146	253163	300228	302211	322408	330534	333158
021643	053060	079420	091077	105354	146337	207153	253206	300231	302226	322435	330548	333191
021649	054026	080021	091129	105411	146354	207169	255022	300239	302280	322487	330557	333203
021682	054087	080040	091169	105525	146377	207177	257121	300273	302295	322494	330641	333222
021718	058034	080061	091271	105558	148249	207183	257122	300309	302297	322518	330680	333262
021733	061108	080107	091295	106193	151037	207184	257124	300398	302322	322530	330707	333302
021834	061204	080172	091313	109373	152225	207203	257126	300417	302367	322564	330713	333304
022009	061265	080181	091415	110040	152228	207204	269003	300464	302376	322593	330725	333322
022021	064301	080182	091416	110291	152235	207217	269003	300550	302378	322599	330800	333332
022041	065087	080192	091455	110298	152259	207220	271017	300568	302403	322601	330807	333339
022083	065139	080193	091498	110369	152263	207240	271065	300575	302415	322616	330881	333388
022104	065202	080195	091545	110500	152284	207245	271069	300585	302429	322655	330890	333411
022238	065244	080203	091585	110550	152315	207251	271097	300677	302451	322661	331064	333412
022243	065327	080227	091633	111220	152511	207301	272076	300710	302465	322674	331092	333424
023041	065438	080238	091688	112561	152654	208069	272091	300717	302466	322679	331154	333430
023108	065457	080240	091815	112581	152751	208075	272098	300727	302467	322686	331309	333435
023150	065474	080244	091874	112615	152854	208098	272119	300798	302493	322692	331354	333462
023257	065549	080248	091945	112668	152879	208111	274031	300806	302537	322728	331362	333468
024055	065581	080280	092097	113200	165046	208117	274036	300847	302568	322729	331418	333481
024083	065630	080567	092634	113516	170121	208122	274101	300884	302586	322788	331426	333503
025025	065733	080374	093028	114154	170123	208137	274167	300914	302596	322795	331517	333532
025062	065777	080405	093032	114219	176081	208148	274173	300955	302629	322802	331556	333552
025074	065825	080452	100007	115145	177027	208154	274001	300959	302659	322810	331598	333553
025156	065901	080505	100057	115228	180024	208171	275057	300994	302661	322841	331632	333557
026046	065914	083093	100063	115403	180026	208195	275078	301026	302678	323113	331646	333559
026062	066068	083166	100079	115465	180028	208206	276005	301037	302728	323122	331653	333572
026100	066191	083201	100116	115830	187005	208266	277009	301039	302742	323130	331668	333589
026146	068051	083206	100161	115860	191123	208271	277013	301040	302787	324050	331726	333592
026201	068111	083208	100217	115897	191534	208279	277015	301136	302872	324591	331790	333599
027069	068126	083217	100228	115923	191559	208331	277019	301147	302902	325045	331791	333623
027075	068233	083219	100450	115946	191629	209007	277060	301168	302918	325079	331792	333626
027126	069244	083240	100762	116018	191642	209036	277077	301192	302921	325613	331793	333636
027232	069383	083252	100831	117309	191678	209047	278023	301204	303645	325868	331794	333654
027364	069534	089209	101033	117336	191721	209052	280044	301227	303649	325900	331797	333660
028164	069586	089240	101066	117367	191847	209055	280060	301247	303682	326170	331797	333679
028198	069612	089246	101134	117431	191849	209062	282136	301257	303686	326281	331820	333699
028239	069616	089430	101232	117443	191887	209065	282224	301266	303745	326283	331944	333699

Continued on p. 18.

Children should be seen and not hurt

Drive carefully.



Table with multiple columns of small, illegible text, likely a routing or distribution list.

INVALID EXPRESS MAIL CORPORATE ACCOUNT NUMBERS—Continued

752191	770807	772674	784259	800153	804105	850013	895280	902940	920010	928886	945467	967055
752255	770848	772728	785083	800175	805078	850039	895289	902958	920031	928890	945473	967066
752266	771102	772734	785313	800221	805138	850042	898011	903011	920053	928897	945490	968222
752376	771111	772736	785323	800276	805147	850043	898028	903015	920034	928716	945492	968379
752320	771112	772765	785336	801033	805148	850123	900025	903101	920041	928768	945536	968522
752557	771124	772773	785383	801041	805186	850135	900049	903249	920060	928787	945584	969016
752684	771127	772794	785391	801071	805215	850152	900051	903273	920087	928821	945687	972238
752753	771132	772811	787084	801093	805219	850174	900057	903287	920189	928834	946128	972352
752768	771142	772819	787451	801110	805224	850182	900112	903301	920205	931300	946135	972373
752918	771147	772848	787453	801195	805233	850183	900236	903342	920261	931332	946205	972383
752970	771153	772864	787483	801216	805267	850266	900256	903393	920296	931351	946215	972394
752985	771158	772870	787521	801229	805316	850279	900275	903354	921308	931358	946254	972594
753053	771168	772898	787623	801250	806041	850320	900366	906003	921332	931367	946643	972644
753093	771173	772894	788003	802020	809010	850324	900376	906109	921456	931513	947039	972673
753113	771177	772910	788029	802026	809012	850315	900387	907058	921557	931514	947060	972752
753127	771182	772912	790232	802040	809019	850416	900458	907069	921598	931550	949137	973250
753146	771184	772917	790307	802049	809064	850442	900541	907111	921624	931553	950009	973251
753900	771213	772922	790353	802056	809108	850455	900570	907114	921757	931625	950056	973258
753908	771238	772928	791081	802141	809124	850471	900574	907156	921779	931858	950111	974130
760290	771247	772933	791104	802163	809160	850472	900593	907173	921815	931937	950138	980010
760327	771257	772944	791117	802190	812006	850518	900606	907333	921848	931955	950165	980026
760472	771267	772985	791127	802248	812007	850531	900688	907334	921857	931965	950231	980030
760502	771273	772986	791129	802290	812008	850540	900706	907333	921873	932052	950315	980033
760556	771277	772990	791143	802386	813041	850552	900718	907363	922088	932504	950363	980064
760564	771288	773006	791204	802433	813042	850578	900759	907522	922102	932563	950371	980124
760570	771307	773018	791219	802449	813045	850582	900763	907572	922108	932567	950397	981541
760576	771310	773020	791232	802522	813233	850590	900807	907624	922109	932590	951029	981725
760577	771312	773087	791234	802528	814029	850631	900808	907686	924457	933258	951064	981816
760584	771352	773102	791241	802564	815034	850640	900853	907763	924193	933267	951072	981827
760592	771354	773113	791257	802583	815077	850646	900881	907783	924218	933139	951089	981869
760594	771359	773135	791261	802592	815111	850648	900892	907811	925057	933242	951116	981878
760610	772004	773141	791294	802605	816098	850687	900900	907812	926051	933334	951152	981899
761333	772051	773145	791295	802617	816056	850738	900904	907861	926134	933336	951171	983013
761348	772056	773261	791298	802634	816117	856178	900981	910216	926156	933922	951347	983015
761409	772060	773300	791339	802658	816247	856184	901051	911093	926179	933983	952201	984074
761411	772094	773018	791344	802692	826670	856256	901081	911142	926232	933917	952209	984100
761510	772301	773100	791361	802712	827050	856316	901113	912242	926552	933918	952221	984120
761530	772304	780047	793012	802718	833285	856325	901238	912313	926633	940336	952230	984143
761578	772335	782079	794004	802745	836310	856423	901520	913673	926636	940339	952253	988021
761584	772344	782109	794023	802746	836720	856440	901592	913759	926703	940374	952257	988042
761587	772345	782118	794132	802760	837120	856469	901794	913770	926711	940424	952001	988059
761593	772352	782161	794138	802777	840102	856470	902390	913780	926850	940478	952006	989060
761648	772408	782166	794173	802778	840162	856484	902449	913876	926867	940481	952248	989069
761656	772428	782169	794185	802808	841117	856486	902484	913901	926928	941002	952262	989231
761701	772441	782185	794197	802821	841294	871046	902564	913908	927253	941966	952159	989233
761721	772498	782186	794198	802909	841343	871079	902565	914096	927326	941371	952173	989285
761726	772506	782188	794230	802970	841368	871313	902646	914039	927343	941405	952194	989349
762058	772511	782212	794267	802997	841396	871314	902661	914065	927392	941494	952222	989388
763104	772522	782276	794304	803034	841545	871339	902676	914075	927459	941518	952283	989526
763117	772529	782349	794309	803063	841573	881106	902685	914091	927523	941525	952284	989536
763118	772557	782386	794320	803068	841594	882114	902715	914103	927545	941556	952298	989549
763120	772560	784200	794332	803089	841603	883109	902737	914277	927550	941606	952319	989550
767549	772566	784202	794337	803151	841669	891202	902768	917682	927684	941608	952340	989556
770126	772576	784219	794341	804052	843030	891240	902771	918002	928151	945057	952366	989583
770576	772605	784223	794345	804054	844083	891374	902774	918012	928201	945256	952403	989630
770682	772612	784235	794363	804076	846053	891391	902787	918018	928208	945289	952415	989758
770895	772627	784243	799237	804084	847043	891429	902815	918149	928441	945301	952419	989811
770702	772649	784244	799231	804104	850008	895228	902883	920002	928497	945338	960030	9899204

—Marketing Dept., 8-31-89.

UNITED STATES POSTAL SERVICE

WASHINGTON, DC 20260-1571
OFFICIAL BUSINESS

PENALTY FOR PRIVATE USE TO
AVOID PAYMENT OF POSTAGE, \$300

FIRST-CLASS MAIL
POSTAGE & FEES PAID
USPS
PERMIT NO. G-10

FIRST-CLASS

To order the **POSTAL BULLETIN**, follow instructions below and return this entire page.
Do NOT detach the address label.

1. Postal Service Requisitions	2. Public Orders
<p>a. Missing Issues. To order copies not received in regular distribution, call the Materiel Distribution Center at PEN 440-4211 or (201) 707-4211, ext. 211.</p> <p>b. Single Issue. To order additional copies, send Form 7380, <i>Supply Center Requisition</i>, to the Materiel Distribution Center, Somerville, NJ 08877-9991.</p> <p>c. Quantity Changes. Complete form below and send entire page, including mailing label, to: Document Control Division USPS Headquarters Washington, DC 20260-1571</p> <p>d. Address Changes. Same as 1-c.</p>	<p>a. Source. Superintendent of Documents U.S. Government Printing Office Washington, DC 20402-0001 Tel. (202) 783-3238</p> <p>b. Single Copy. Complete form below and send this entire page and check or money order for \$1.50 per copy (payable to Superintendent of Documents) to address in 2-a above.</p> <p>c. Subscription. Complete form below. Send this entire page and check or money order for \$71.00 (per year) to address in 2-a above.</p> <p>d. Address Changes. Complete form below and send entire page to address in 2-a above.</p>

POSTAL BULLETIN ORDER FORM

Postal Facility, Company, or Personal Name	Old Quantity	New Quantity
Attention Line (if needed)	Customer's Home Phone ()	Customer's Office Phone ()
Street Address	Name of Approving Manager	
City, State, ZIP + 4	Signature of Approving Manager	
Country (if needed)	Credit Card No. (if used)	Exp. Date (mo/yr)

Check one:

MasterCard VISA accepted



Effective Period: POSTAL BULLETIN Articles are effective for 1 year unless articles change the text of permanent directives or unless otherwise specified. **Distribution:** USPS distributes the BULLETIN to all postal facilities. The Government Printing Office distributes copies to all public subscribers. **Index:** A quarterly index of BULLETIN articles appears in January, April, July, and October; a yearly index appears early the following year.