



# postal bulletin

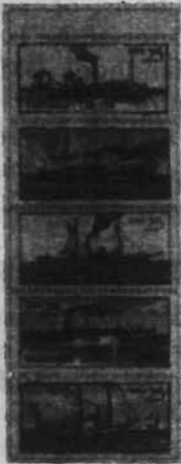
Published Since March 4, 1880

PB 21710—February 2, 1989—40 Pages

## \$5 Steamboats Stamp Booklet

The \$5 Steamboats commemorative stamp booklet goes on sale March 3 in New Orleans, Louisiana. This booklet contains four panes of five designs each. The 25-cent stamps feature five of America's earliest steamboats: the 1788-1790 *Experiment*, 1809 *Phoenix*, 1812 *New Orleans*, 1816 *Washington*, and 1818 *Walk in the Water*.

**Do Not Place on Sale Before March 4, 1989**



Copyright U.S. Postal Service 1989

Collector information is on page 23.

**Supply.** All post offices will receive an automatic distribution of 10 booklets for each pane of 50 commemorative stamps furnished on a standard distribution. Postal data centers will furnish stamp distribution offices (SDOs) with the necessary documents to make subsequent distributions to associate offices. Post offices with authorized philatelic centers will receive a second automatic shipment from the Bureau of Engraving and Printing, and offices must reserve the booklets in this shipment for sales at philatelic centers.

The Bureau of Engraving and Printing will not honor supplemental requisitions for *Item 6622*. Regional accountable paper depositories (RAPDs) will receive limited quantities of this stamp booklet for filling supplemental orders. SDOs requiring additional booklets may order them from their RAPD using a separate Form 17-A, *Accountable Items Requisition From Stamp Distribution Offices*. All other post offices requiring additional booklets should immediately requisition them from their stamp distribution office on a separate Form 17-A.

Before requisitioning additional stock, post offices should consider that they must deplete stock before May 4, 1989, except authorized philatelic centers.—*Philatelic and Retail Services Dept., 2-2-89.*

## Bicentennial Inauguration Memento

All associate offices, stations, branches, philatelic centers, and the like are notified that their original supply of Item 8836, the Bicentennial Inauguration Memento, contains an error in the folder's text.

*Do not sell or release these original folders from your accountability under any circumstances.*

The memento folder was reprinted and the correct version sent by Express Mail to stamp distribution offices (SDOs) beginning Tuesday, January 17. SDOs will ship the correct folder to all ordering facilities in quantities identical to their original orders.

Because there was insufficient time to replace the embossed envelopes and postal card that accompany each folder, each ordering facility must immediately transfer the envelopes and postal card from the erroneous folders to a quantity of the correct folders sufficient to meet anticipated demand.

Facilities that use Item 13, *Routing Slip*, indicating no value and listing the quantity of empty, defective Bicentennial Inauguration folders *must return those folders to their SDOs for destruction.*

—*Philatelic and Retail Services Dept., 2-2-89.*

## SAFETY IS NO ACCIDENT

### CONTENTS

	Page
\$5 Steamboats Stamp Booklet.....	1
1989 National Five-Digit ZIP Code and Post Office Directory.....	4
25-Cent WORLD STAMP EXPO '89 Commemorative Stamp.....	3
APO/FPO Changes.....	2
Barcode Requirements ( <i>Correction</i> ).....	5
Bicentennial Inauguration Memento.....	1
Canceled Wanted Circular.....	3
Domestic Order.....	37
EMS—Czechoslovakia.....	2
EMS—Indonesia.....	2
EMS—Netherlands Antilles.....	2
Express Mail International Service—Botswana.....	36
Express Mail Military Service.....	7
International Mail—New Zealand.....	2
Invalid Express Mail Corporate Account Numbers.....	38
MSC Consolidations/Realignment of USPS Field Structure.....	25
Mail Alert.....	37
Missing Children Poster.....	21
Missing Money Orders—Canadian.....	35
Missing Money Orders—U.S.....	26
Sack Label Preparation ( <i>DMM Notice</i> ).....	25
Sacking Irregular Parcels ( <i>DMM Notice</i> ).....	3
Spring Philatelic Promotion.....	3
Stamp Poster 89-3 ( <i>Steamboats Stamp Booklet</i> ).....	23
ZIP + 4 State Directory and Customer Orders.....	25

## International Mail—New Zealand

Effective immediately, the weight limit for air and surface parcel post to New Zealand increases to 44 pounds. The parcel post rate chart through 44 pounds appears below.

### PARCEL POST (270)

Air	Weight not over lbs.	Surface	Air	Weight not over lbs.	Surface
\$10.30	1	\$4.60	\$123.50	23	\$36.10
16.10	2	4.60	128.50	24	37.60
21.90	3	6.10	133.50	25	39.10
27.70	4	7.60	138.50	26	40.60
33.50	5	9.10	143.50	27	42.10
38.50	6	10.60	148.50	28	43.60
43.50	7	12.10	153.50	29	45.10
48.50	8	13.60	158.50	30	46.60
53.50	9	15.10	163.50	31	48.10
58.50	10	16.60	168.50	32	49.60
63.50	11	18.10	173.50	33	51.10
68.50	12	19.60	178.50	34	52.60
73.50	13	21.10	183.50	35	54.10
78.50	14	22.60	188.50	36	55.60
83.50	15	24.10	193.50	37	57.10
88.50	16	25.60	198.50	38	58.60
93.50	17	27.10	203.50	39	60.10
98.50	18	28.60	208.50	40	61.60
103.50	19	30.10	213.50	41	63.10
108.50	20	31.60	218.50	42	64.60
113.50	21	33.10	223.50	43	66.10
118.50	22	34.60	228.50	44	67.60

Weight Limit—44 pounds

The next issue of the INTERNATIONAL MAIL MANUAL will incorporate this change.

—Rates and Classification Dept., 2-2-89.

## EMS—Czechoslovakia

Effective immediately, Express Mail International Service (EMS) is available to and from 15 additional points in Czechoslovakia. A complete list of the 17 cities in Czechoslovakia to which Express Mail can be sent follows:

Banska Bystrica	Liberec
Bratislava	Olomouc
Breclav	Ostrava
Brno	Plzen
Ceske Budejovice	Prague
Cheb	Praha
Decin	Usti nad Labem
Hradec Kralove	Zilina
Kosice	

All other conditions of service remain unchanged. Future issues of the INTERNATIONAL MAIL MANUAL (IMM); Handbook DM-201, *Express Mail Service*; and Publication 273, *Express Mail International Service Guide*, will include this revision.

—Marketing Dept., 2-2-89.

## EMS—Indonesia

Effective immediately, Express Mail International Service (EMS) is available to and from one additional city in Indonesia—Pontianak. A complete list of the nine cities to which Express Mail can be sent in Indonesia follows:

Balikpapan (in Kalimantan island)  
Batam (in Riau island)  
Denpasar (in Bali island)  
Jakarta (Djakarta) (in Java island)  
Medan (in Sumatra island)  
Pontianak (in Kalimantan island)  
Semarang (in Java island)  
Surabaya (in Java island)  
Ujungpandang (in Sulawest island)

All other conditions of service remain unchanged. Future issues of the INTERNATIONAL MAIL MANUAL (IMM); Handbook DM-201, *Express Mail Service*; and Publication 273, *Express Mail International Service Guide*, will include this revision.

—Marketing Dept., 2-2-89.

## EMS—Netherlands Antilles

Effective immediately, Express Mail International Service (EMS) is available to and from two additional points in the Netherlands Antilles—the islands of Saba and St. Eustatius. The following is a complete list of all points served in the Netherlands Antilles: Bonaire, Curacao, the Netherlands Antilles side of St. Maarten, Saba, and St. Eustatius.

**Note:** All other conditions of service remain unchanged.

Future issues of the INTERNATIONAL MAIL MANUAL; Handbook DM-201, *Express Mail Service*; and Publication 273, *Express Mail International Service Guide*, will include this revision.

—Marketing Dept., 2-2-89.



## APO/FPO Changes

Please make the following pencil changes to the table entitled Conditions Applied to Mail Addressed to Military Post Offices Overseas in POSTAL BULLETIN 21686, dated August 18, 1988, pages 16-23:

APO/FPO	Actions	Mailing restrictions
96222		A-B

All field division postmasters/general managers must notify acceptance units of these changes.

—Mail Processing Dept., 2-2-89.

## Spring Philatelic Promotion

The Postal Service will launch a month-long spring promotional campaign on March 3 featuring the Steamboats booklet stamps. This promotion is designed to attract the interest of casual collectors and increase the number of qualified customers on our national philatelic mailing list.

All CAG A-L offices, sectional centers, philatelic centers, and divisions will receive, no later than March 1, promotional lobby materials, which include a Steamboats poster, a countertop easel, and take-one inserts. The Steamboats promotion posters serve as the regular lobby poster for the Steamboats issue and will be distributed according to established lobby poster shipment procedures. The counter easel, titled *Don't Miss the Boat*, includes take-one, self-mailer inserts offering a pane of five Steamboats stamps, four Currier and Ives steamboat lithograph prints, and a Commemorative Stamp Club album page with protective mount for \$3.

Please note that this offer is filled by mail order only through Headquarters and expires June 30, 1989. National print advertising in *Time*, *People*, *Reader's Digest*, *Smithsonian*, *National Geographic*, *Newsweek*, *Life*, *Natural History*, *Discover*, *TV Guide*, *Americana*, *American Heritage*, *Historic Preservation*, *Yankee*, and *Saturday Evening Post* will support this offer. Also, a television commercial will be broadcast in selected cities across the country advertising Steamboats stamps available at post offices.

When post offices receive their Steamboats promotional materials, they should review the contents and prepare staff for customer inquiries. Use prominent display space in the lobby so customers can see the promotion easily and have access to the take-one coupons. Display all materials beginning Monday, March 6, in conjunction with the first business day of sale of the Steamboats booklet. When supplies of the take-one coupons are exhausted, remove all the display materials.

All offices are encouraged to support this promotion with creative, local promotional ideas. Coordinate all activities, such as placing extra easels and posters in libraries, with your marketing and communications managers.

—*Philatelic and Retail Services Dept.*, 2-2-89.

### DMM Notice

## Sacking Irregular Parcels

Effective with DOMESTIC MAIL MANUAL (DMM) Issue 30 (3-19-89), in 667.91, *Exemptions From Packaging Requirements*, section 667.911 will be amended to restore the last sentence to language similar to that used in DMM Issue 28, inadvertently replaced by an intervening DMM revision. The sentence follows: Each separate mailing of irregular parcels must meet the minimum volume requirements for mailing at the bulk third-class rates.

—*Rates and Classification Dept.*, 2-2-89.

## 25-Cent WORLD STAMP EXPO '89

### Commemorative Stamp

The 25-cent WORLD STAMP EXPO '89 commemorative stamp goes on sale March 16 in New York City. The stamp has a unique stamp-on-stamp motif that features a smaller reproduction of the classic 90-cent Lincoln stamp issued in 1869.

WORLD STAMP EXPO '89, the first international stamp show ever directly sponsored by the Postal Service, will be held in Washington, DC, November 17-December 3, 1989.

**Do Not Place on Sale Before March 17, 1989**



**Copyright U.S. Postal Service 1988**

A future issue will include collector information.

**Supply:** All post offices will receive their standard automatic distribution quantities for a 50-subject commemorative stamp. *The Bureau of Engraving and Printing will not honor supplemental requisitions for Item 4457.*

Regional accountable paper depositories (RAPDs) will receive limited quantities of this stamp for filling supplemental orders. Stamp distribution offices (SDOs) requiring additional stamps may order them from the RAPD using separate Forms 17-A, *Accountable Items Requisition From Stamp Distribution Office*. All other post offices requiring additional stamps should immediately requisition them from their SDOs on separate Forms 17-A.

—*Philatelic and Retail Services Dept.*, 2-2-89.

**The orange and blue pouch is to be used for Express Mail Service only.**

## Canceled Wanted Circular

Destroy the wanted circular on Thomas Leonard Balla dated 10-29-86.—*Inspection Service*, 2-2-89.

## 1989 NATIONAL FIVE-DIGIT ZIP CODE AND POST OFFICE DIRECTORY

The U.S. Postal Service will continue a 10-year policy and print two editions of the *1989 National Five-Digit ZIP Code and Post Office Directory*.

### Publication 65

**Description.** Pub. 65 is the full-color cover version of the *National Five-Digit ZIP Code and Post Office Directory*, for external sale as well as internal use. Each Pub. 65 is individually packaged in a mailable container for ease of handling. The containers will be shipped in cartons of eight directories. Post offices CAG A-G may sell the directory over the counter. Post office CAG H-L must use Form 4326, *USPS National Five-Digit ZIP Code and Post Office Directory Order*, to order copies from their management sectional centers (MSCs). The price of the 1989 Pub. 65 is \$9 per copy.

**Distribution.** Pub. 65 will be shipped on pallets from the contractor's printing plant directly to the MSCs during February 1989. These directories will not be addressed individually for shipment to associate offices (AOs). The division ZIP Code coordinator and the accountable paper unit must distribute Pub. 65 to offices in CAGs A-G within the sectional center. They should base distribution quantities on last year's sales reports from these offices.

The MSC paper unit will maintain the remaining copies of Pub. 65 to fill orders from CAGs H-L offices using Form 4326 to place customer orders. Not distributing directories directly to offices in CAGs H-L should allow better control of Pub. 65 inventory. The success of the sales program depends on managing the distribution.

Both the Somerville and Topeka materiel distribution centers (MDCs) stock Form 4326. The accountable paper unit at each MSC should order a quantity of Form 4326 for their own use and to distribute to offices in CAGs H-L. CAGs H-L using Form 4326 to place customer orders should delete Item 2 on the form before distribution to customers, because the discount no longer exists. A revised Form 4326 will reflect this change.

**Sale.** This year, the Postal Service will again maintain a computerized file of the names and addresses of all customers who purchase Pub. 65. The USPS will use this file to solicit future directory orders and to provide information to customers regarding other address information systems products, such as the Carrier Route Information System (CRIS), ZIP + 4 files, etc.

Sectional center managers and postmasters must ensure strict compliance with procedures in Handbook F-1, *Post Office Accounting Procedures*, and account for all sales, as required by HBK. F-1 instructions for retail products and by guidelines issued by division offices. In particular, they must maintain inventory control, as stated in parts 574-576. Clerks must report revenue on Form 1412, A or B, *Daily Financial Report*, and use Form 3317-A, *Retail*

*and Philatelic Products—Clerks Daily Sales Record*, to identify revenue (see Handbook F-1, 572.1.).

When selling Pub. 65 over the counter, clerks in CAGs A-G post offices, stations, and branches should provide each customer with Form 4326 (or a photocopy) and ask the customer to complete and return the form before leaving the window. The offices forward completed Forms 4326 to the management sectional center (MSC) accountable paper unit on a daily basis.

**CAG A-L Post Offices.** Each single directory and each bundle (eight directories) order must have one order form/mailling label. The clerk must endorse the order **Bundle Quantity—8 Directories**. They should instruct customers to complete the order and present it to the clerk with the appropriate payment. The customer receives the top copy of the order blank as a receipt. This top copy has a place for the unit's all-purpose stamp and the clerk's initials.

Advise the customer that the MSC will ship the directories to the mailing address on the label. If customers do not wish to order a directory in this manner, clerks should give them directions to the nearest facility in CAG A-G that sells directories over the counter.

The clerk accounts for the directory sale on Form 1412, in accordance with Handbook F-1 procedures. At the close of business, the clerk dispatches the directory orders for that day to the accountable paper unit at the MSC.

### MSC Accountable Paper Unit Instructions

1. After receiving CAG H-L directory orders, remove the MSC receipt (copy 2 of Form 4326), place the mailing label on a prepackaged single Pub. 65 ZIP Code Directory, and enter it in the mailstream for delivery to the customer.

**Note:** While most orders will be for single directories, check for orders marked **Bundle Quantity—8 Directories**. In that event, apply the label to a carton of eight directories.

2. Make copies of the MSC receipt received during the week from the CAGs H-L post offices, stations, and branches and forward these to the National Address Information Center at the address below.

3. At close of business each Friday, forward all Forms 4326 received during the week from CAGs A-G post offices, stations, and branches to the National Address Information Center, U.S. Postal Service, 6060 Primacy Pky., Suite 101, Memphis TN 38188-0001.

**Requisitions.** The MDCs will not stock Pub. 65 this year. Offices that anticipate insufficient supplies of Pub. 65 for customer demand must obtain additional supplies from the accountable paper unit at the MSC. If the division coordinator anticipates that customer demand will exceed the available

quantities for the entire division, the coordinator should make a written request indicating the number of books needed (orders must be in pallet lots; one pallet is 265 books). Send this request to Attn: Lou Salvatore, Chief, Consigned Branch, United States Government Printing Office, 8610 Cherry Lane, Laurel, MD 20707-4984.

#### Publication 65-A

**Description.** Pub. 65-A, 1989 National Five-Digit ZIP Code and Post Office Directory, used by Postal Service personnel and in postal lobbies by customers, will have a full-color cover and be plainly marked for internal use.

Do not sell or distribute this directory to the private sector. Federal government departments, agencies, and military installations should also use Pub. 65-A. Agencies may obtain copies through their respective printing management organization.

**Distribution.** MSCs will receive Pub. 65-A directly, in cartons with an addressed penalty label to each post office, station, branch, and community post office. Directories will also be shipped directly to bulk mail centers (BMCs), postal data centers (PDCs), transportation management offices (TMOs), and other Postal Service offices. The quantity provided each postal unit is based on that unit's profile as determined from computerized data files. The quantity shipped should be adequate for the needs of each unit or office.

**Requisitions.** The MDCs will store a limited quantity of Pub. 65-A. Offices requiring additional copies should complete Form 7380, *Supply Center Requisition*, and forward it to their division ZIP Code coordinator for review and approval. The requesting unit should identify the specific main office, station, or branch to receive the shipment. Division coordinators then forward approved requisitions to the MDCs.

**Obsolete Copies.** Upon receipt of the 1989 edition, offices should dispose of any copies of Pub. 65, 1988 National Five-Digit ZIP Code and Post Office Directory, and Pub. 65-A, 1988 National Five-Digit ZIP Code and Post Office Directory (For Internal Use Only), and the 1988 alternative editions of Pubs. 65 and 65-A in stock or in use or present them locally for recycled paper.

#### National ZIP Code Coordinator

Division coordinators encountering problems with the distribution of Pubs. 65 or 65-A, or requiring additional information, may contact the national ZIP Code coordinator: Shirley B. Wade, Address Information Center, U.S. Postal Service, 6060 Primacy Pky, Suite 10, Memphis, TN 38188-0001, PEN: 223-7641. Associate offices should not contact the coordinator but should direct inquiries to their division coordinator.

—Delivery Services Dept., 2-2-89.

#### Correction

Special POSTAL BULLETIN 21746, 1-18-89, contained errors on page 19 concerning renumbering of regulations governing preparation requirements for barcodes on pieces of First-Class Mail. To ensure that the requirements are accurately available to mailers and postal personnel, the entirety of DOMESTIC MAIL MANUAL (DMM) section 325.5 is reprinted below and includes all revisions intended for transmission in the Special POSTAL BULLETIN. The revised regulation will also appear in DMM Issue 30, 3-19-89.

#### 325.5 Barcode Requirements

##### 325.51 ZIP + 4 Barcodes

**a. General.** ZIP + 4 barcodes must be prepared in accordance with 324.72 through 324.77. The ZIP + 4 barcode must accurately represent the correct 5-digit and sector segment codes for the address on the mailpiece, and be compatible with the related operational requirements of USPS automated mail processing equipment. Pieces bearing default or fictitious add-on codes, e.g., 0000, 5000, or 9999, etc., must not be included in a ZIP + 4 barcoded rate mailing. ZIP + 4 barcodes may be printed on inserts that will appear through a

## BARCODE REQUIREMENTS

window on an envelope provided the window on the envelope and the barcode on the insert also meet the specifications in 325.51b.

**b. Inserts.** The barcode may be printed on an insert and appear through a window in the barcode clear zone under the following conditions:

**(1) Barcode Window Specifications.**

**(a)** Windows must be covered with a clear plastic material, securely glued on all sides;

**(b)** Windows must extend fully to the lower edge of the envelopes and must be of wrap-around construction;

**(c)** The right edge of the window must be not less than ¼ inch from the right edge of the envelope;

**(d)** The left edge of the window must be not less than 4¼ inches from the right edge of the envelope.

**(2) Barcode Location Specifications.** The barcode, as it shows through the window when inserted in the mailpiece, must meet all the following specifications:

**(a)** The barcode must be located within the barcode clear zone which extends ¾ inch from the bottom of the envelope and 4¼ inches from the right edge of the envelope;

## Correction

**BARCODE REQUIREMENTS—Continued**

(b) The barcode shall be at least  $\frac{1}{8}$  inch from the right edge of the window and  $\frac{1}{8}$  inch from the left edge of the window;

(c) No printing other than the barcode is permitted in the barcode clear zone;

(d) The left-most bar must be located  $3\frac{1}{8}$  inches  $\pm \frac{3}{16}$  inch from the right edge of the mailpiece and from  $\frac{3}{16}$  inch to  $\frac{1}{16}$  inch from the bottom of the envelope. The baseline of all bars must be  $\frac{1}{4}$  inch  $\pm \frac{1}{16}$  inch from the bottom edge of the mailpiece.

**325.52 Five-Digit Barcodes**

a. *General.* Pieces in a ZIP + 4 barcoded rate mailing may contain 5-digit barcodes provided at least 85 percent of the pieces in the mailing contain a ZIP + 4 barcode as prescribed in 325.3. All 5-digit barcodes must meet the requirements of 324.74 through 324.77. In addition, the requirements of 325.52 b and c must be met.

b. *Barcode Format.* The 5-digit barcode must be prepared as described in 324.72, except that there must be a single field of 32 bars consisting of a frame bar, a series of bars that will represent the correct 5-digit ZIP Code for the address on the piece (see Exhibit 324.72), a correction digit, and a final frame bar. The correction digit will be determined by adding the numbers in the 5-digit ZIP Code and determining what single-digit number must be added to that sum to make the total a multiple of 10 (a number that ends with a zero).

*c. Barcode Location.*

(1) *Barcodes Printed Directly on Mailpieces.* The 5-digit barcode printed on mailpieces that do not have a window for a barcode insert must be located on the mailpiece in accordance with the requirements in 324.73, except that within the read area, the left-most bar of the barcode must be located between  $3\frac{1}{8}$  inches and 4 inches from the right edge of the mailpiece (see Exhibit 325.52c(1)).

**Note:** Pieces that do not bear the ZIP + 4 barcode (there is either no barcode or there is a 5-digit barcode) and that are prepared without a window for a barcode insert may qualify for the ZIP + 4 Presort, Presorted First-Class, Nonpresorted ZIP + 4, or single-piece First-Class rates depending on their preparation and level of presort (See 325.12).

(2) *Barcodes Printed on Inserts.* Five-digit barcodes printed on inserts that will appear through a barcode window must be located in accordance with either the requirements of 325.51b(2) or 325.52c(1).

**Note:** Pieces prepared with a window in the barcode clear zone through which the ZIP + 4 barcode does not appear (there is either no barcode or there is a 5-digit barcode) may qualify only for the Presorted First-Class or single-piece First-Class rates, even if the pieces bear a numeric ZIP + 4 code in the address and meet the OCR readability and other requirements for the ZIP + 4 rates.

—Rates and Classification Dept., 2-2-89.



**An  
accident  
happened  
here**

## EXPRESS MAIL MILITARY SERVICE

A recent audit conducted domestically and overseas of Express Mail Military Service (EMMS) dispatches indicates that a serious problem exists in meeting expected performance standards because of inconsistent tagging and labeling practices by acceptance and dispatching offices. The following labeling and tagging guidelines will correct these deficiencies. All supervisors responsible for the acceptance and dispatch of EMMS items must review these procedures and ensure all employees are thoroughly familiar with the procedures when processing EMMS items.

### Domestic Label for Massing EMMS

If the USPS acceptance office does not make five-digit direct EMMS sacks or a collector sack for an APO/FPO, prepare the pouch label as follows:

DIS MASSING POINT (State Abbreviation-ZIP Code)  
EMMS-MIXED  
ORIGIN OFFICE AND ZIP CODE

The EMMS sack going to a domestic massing point must have Tag 176, Express Mail Military Service, attached to the domestic Express Mail Service sack to ensure that the dispatching offices handle the EMMS separately from domestic Express Mail Service shipments (see Exhibit B below).



EXHIBIT A—LABEL 176

### EMMS Direct Sacks

At a minimum, sectional center facilities (SCF) must make up individual five-digit direct sacks to each APO/FPO before dispatching to the airmail facility AMF/EMMS gateway exchange office. They must enclose all sackable mail in an Express Mail pouch, even if only one article fits in a pouch or sack because of its size. They must keep outside pieces to the barest minimum. (In some cases, outside pieces are not authorized for entry to certain countries. Refer to the APO/FPO service listings and footnote explanation on pages 10-20).

Those USPS offices making a five-digit direct EMMS sack for an APO/FPO must prepare the pouch label as follows:

APO SHAPE BE 09055  
EMMS-DIRECTS BRU (Overseas Air Stop Code)  
ORIGIN OFFICE AND ZIP CODE (Weight of pouch in Kilograms)

Also, the dispatching office must attach Tag 176-B, Express Mail Military Service to the EMMS sack showing the overseas gateway three-letter alpha air stop code (see Exhibit C on page 8).

**Note:** The AMF/EMMS gateway exchange office must include the intra/interline routing in the VIA section of Tag 176-B before dispatching the EMMS sack.

### EMMS Collector Sacks

When time permits, installations should combine individual five-digit direct EMMS pouches in collector sacks as shown in the APO/FPO makeup and labeling list on pages 15-19, to minimize airline handling of small *skin* pouches and to reduce transportation costs. The dispatching office must also attach Tag 176-B to the EMMS sack showing the overseas gateway three-letter alpha air stop code (see Exhibit C).

**Note:** The AMF/EMMS gateway exchange office must include the inter/intraline routing in the VIA section of Tag 176-B before dispatching the EMMS collector sack. The sack label must be formatted as follows:

AMT ATHENS GR 09253  
EMMS-COLLECTOR SACK ATH (Overseas air stop code)  
ORIGIN OFFICE AND ZIP CODE (Weight of sack in kilograms)

The labeling instructions on pages 10-15 also list the individual mailing restriction codes for each APO/FPO. An explanation of these mailing restrictions is published semiannually in the POSTAL BULLETIN. Page 20 includes an explanation of the mailing restrictions as it applies to EMMS. Page 10-15 includes a numerical listing of all APO/FPOs currently on the EMMS directory.

**Note:** APO/FPOs not listed are not authorized to receive EMMS items.

### EMMS Outside Pieces

As mentioned above, outside pieces (OSPs) must be kept to a minimum. However, when it is necessary to dispatch an OSP, the acceptance office must affix a Label 176, Express Mail Military Service, (see Exhibit A above) to the OSP. In some cases, OSPs are not authorized for entry to certain coun-



EXHIBIT B—TAG 176

**EXPRESS MAIL MILITARY SERVICE—Continued**

tries. Refer to the APO/FPO service listings and footnote explanation on pages 10-20. The acceptance office must show the overseas gateway three-letter alpha air stop code on the Label 176 (see Exhibit A).

**Note:** The AMF/EMMS gateway exchange office must include the inter/intraline routing in the VIA section of the Label 176 before dispatching the EMMS OSP (see Exhibit A).

**EMMS Gateway Exchange Offices**

There are 20 EMMS gateway exchange offices established with defined service areas (see page 9). Each office within the EMMS gateway exchange office service area *must* route its originating EMMS mail to the EMMS gateway exchange office by the established critical entry time (CET) for the individual exchange office.

All transportation management service centers (TMSCs) have provided specific routings to the exchange offices to use for EMMS dispatches. These flights have been selected because they meet the CET of the destinating overseas military units.

The international civil and military mail coordinator charged with the responsibility for monitoring the EMMS logistics network within each region must concur with any exceptions to this routing policy. Direct any questions about transportation,

labeling, tagging, and routing of EMMS items to this coordinator. The coordinators are assigned to the following TMSCs:



**EXHIBIT C—TAG 176-B**

Region	TMSC	Telephone Number	FAX Number
Eastern.....	Washington, DC.....	(301) 925-1140	(301) 436-4137
Northeast.....	New York, NY.....	330-2299*	(212) 330-3934
Central.....	Chicago, IL.....	353-2149*	(312) 573-1328
Southern.....	Jacksonville, FL.....	948-7164*	(904) 783-7120
Western.....	San Francisco, CA.....	468-9662/3*	(415) 528-9722

\*PEN Numbers.

**Military Prepared EMMS Sacks**

When APO/FPOs prepare EMMS dispatches to the United States, they must use the following label format:

AMF Kennedy NY 003  
 EMMS—(Domestic ZIP Code Span) JFK (Air stop code)  
 FPO YOKOHAMA JA 98760 (Weight of sack in kilograms)

Also, the military dispatching office must attach Tag 176-B to each EMMS sack showing the three-

letter alpha air stop code. Additionally, the military dispatching office/military mail terminal must show the specific inter/intraline routing in the VIA portion of the tag if mail is not dispatched on a direct flight to its destination.

OSP's must have a Label 176 affixed to the item. Additionally, the military dispatching office/military mail terminal must show the specific inter/intraline routing in the VIA portion of the label if the OSP is not dispatched on a direct flight to its destination.

—Delivery, Distribution, and Transportation Dept., 2-2-89.

**Notice to Driver: Drive Courteously;  
 Observe Traffic Regulations; Protect Children**



**EMMS Exchange Offices**

Exchange office	Service area	Exchange office	Service area
AMF Anchorage (ANC) .....	995-999 (AK)	AMF Los Angeles (LAX) ....	900-935 (CA), 889-891 (NV) 850, 852, 853, 855-857 859-860, 863-864 (AZ) 865 (NM)
AMF Atlanta (ATL).....	270-289 (NC) 290-299 (SC) 300-319 (GA) 320-326 (FL) 350-369 (AL) 370-386 (TN) 387-393, 397 (MS)	AMF Miami (MIA).....	327-349 (FL)
AMF Boston (BOS).....	014-026, 055 (MA) 027-029 (RI) 030-039 (NH) 040-049 (ME) 050-054, 056-059 (VT) 120-123, 128-129 (NY)	AMF New Orleans (MSY) ...	700-708 (LA) 394-396 (MS)
AMF Dallas (DFW).....	710-714 (LA) 733, 750-758, 760-769, 780-782, 786-799, 885 (TX) 716-722, 724-729 (AR) 723 (TN) 730-731, 734-738, 740-741, 743-749 (OK), 739 (KS)	AMF O'Hare (ORD) .....	600-611, 613-619, 624-629 (IL) 515-516, 570-577, 680-681, 683-693 (NE) 530-539, 541-545, 549 (WI) 500-514, 520-528, 612 (IA) 490-497, 498-499 (MI) 460-469, 472-479 (IN) 424 (KY)
AMF Denver (DEN) .....	590-599 (MT) 800-816 (CO) 820-831, 840-847 (UT) 832-838 (ID) 870-884 (NM) 979 (OR) 893, 898 (NV)	AMF Philadelphia (PHL) ....	080-087 (NJ), 150-196 (PA), 197-199 (DE) 250-253, 255-266 (WV)
AMF Houston (IAH).....	759, 770-779, 783-785 (TX)	AMF Seattle (SEA).....	980-986, 988-994 (WA), 970-978 (OR)
AMF Kansas City (MCI).....	630-658 (MO) 620-623, 628, 629 (IL) 660-679 (KS)	AMF Honolulu (HNL) .....	967-969 (HI)
AMF Kennedy (JFK) .....	100-119, 124-127, 130-149 (NY) 070-079, 088-089 (NJ) 010-013 (MA) 060-069 (CT)	AMF Detroit (DTW) .....	400-423, 425-427 (KY) 430-458 (OH) 480-489 (MI) 470-471 (IN)
		AMF Dulles (IAD).....	200-205 (DC) 206-219 (MD) 220-246 (VA) 247-249, 254, 267, 268 (WV)
		AMF St. Paul/Minneapolis (MSP).	540, 546-548 (WI),  550-567 (MN), 580-588 (ND)
		AMF San Francisco (SFO) ..	936-961 (CA) 894-895, 897 (NV)
		AMF San Juan (SJU) .....	006-009

IT IS NEVER TOO LATE

★ TO JOIN THE TEAM ★

BUY U.S. SAVINGS BONDS

## APO/FPO Makeup and Labeling Express Mail Military Service Listing by ZIP Code (Numeric)

ZIP Code	Label directs to	Air stop code	Restrictions	Collector sack	Air stop code
09007	APO SCHWETZINGEN GE 09007	FRA	B-C-D-U	APO HEIDELBERG GE 09102	FRA
09008	APO NIEDERRAD GE 09008	FRA	B-C-D	AMT FRANKFURT GE 09060	FRA
09009	APO RAMSTEIN GE 09009	FRA	B-C-D	NONE	
09011	APO BRUNSSUM NL 09011	FRA	B1-C-F1	APO OFFENBACH GE 09082	FRA
09012	APO RAMSTEIN GE 09012	FRA	B-C-D	NONE	
09021	APO KAPAUN AS GE 09021	FRA	B-C-D	AMT FRANKFURT GE 09060	FRA
09025	APO SCHWABISH HALL GE 09025	FRA	B-C-D-U	APO STUTTGART GE 09154	FRA
09026	APO WILDFLECKEN GE 09026	FRA	B-C-D-U	APO OFFENBACH GE 09082	FRA
09028	APO SANDHOFEN GE 09028	FRA	B-C-D-U	APO OFFENBACH GE 09082	FRA
09029	APO BERCHTESGADEN GE 09029	MUC	B-C-D-U	APO MUNICH GE 09108	MUC
09031	APO KITZINGEN GE 09031	FRA	B-C-D-U	APO OFFENBACH GE 09082	FRA
09033	APO SCHWEINFURT GE 09033	FRA	B-C-D-U	APO OFFENBACH GE 09082	FRA
09034	APO BAUMHOLDER GE 09034	FRA	B-C-D-U	APO KAISERSLAUTERN GE 09227	FRA
09035	APO NEU ULM GE 09035	FRA	B-C-D-U	APO STUTTGART GE 09154	FRA
09036	APO WURZBURG GE 09036	FRA	B-C-D-U	APO OFFENBACH GE 09082	FRA
09038	APO RIYADH SA 09038	RUH	B-E2-F-H1-R-UI	NONE	
09039	APO FRANKFURT GE 09039	FRA	B-C-D-U	APO OFFENBACH GE 09082	FRA
09045	APO KIRCHGOENS GE 09045	FRA	B-C-D-U	APO OFFENBACH GE 09082	FRA
09046	APO BOBLINGEN GE 09046	FRA	B-C-D-U	APO STUTTGART GE 09154	FRA
09047	APO WERTHEIM GE 09047	FRA	B-C-D-U	APO OFFENBACH GE 09082	FRA
09050	APO BAD TOLZ GE 09050	MUC	B-C-D-U	APO MUNICH GE 09108	MUC
09052	APO ZWEIBRUCKEN GE 09052	FRA	B-C-D-U	APO KAISERSLAUTERN GE 09227	FRA
09053	APO GARMISCH GE 09053	MUC	B-C-D-U	APO MUNICH GE 09108	MUC
09054	APO KAISERSLAUTERN GE 09054	FRA	B-C-D-U	APO KAISERSLAUTERN GE 09227	FRA
09055	APO SHAPE GE 09055	BRU	B1	AMT BRUSSELS GE 09153	BRU
09056	APO WORMS GE 09056	FRA	B-C-D-U	APO OFFENBACH GE 09082	FRA
09057	APO RHEIN MAIN AB GE 09057	FRA	B-C-D	AMT FRANKFURT GE 09060	FRA
09058	APO WORMS GE 09058	FRA	B-C-D-U	APO OFFENBACH GE 09082	FRA
09059	APO MIESAU GE 09059	FRA	B-C-D-U	APO KAISERSLAUTERN GE 09227	FRA
09060	APO FRANKFURT GE 09060	FRA	B-C-D	AMT FRANKFURT GE 09060	FRA
09061	APO NELLINGEN GE 09061	FRA	B-C-D-U	APO STUTTGART GE 09154	FRA
09063	APO HEIDELBERG GE 09063	FRA	B-C-D-L-U	APO HEIDELBERG GE 09102	FRA
09066	APO ERLANGEN GE 09066	FRA	B-C-D-U	APO FURTH GE 09696	FRA
09067	APO KAISERSLAUTERN GE 09067	FRA	B-C-D-U	APO KAISERSLAUTERN GE 09227	FRA
09068	APO FURTH GE 09068	FRA	B-C-D-U	APO FURTH GE 09696	FRA
09069	APO BREMERHAVEN GE 09069	FRA	B-C-D-U	APO OFFENBACH GE 09082	FRA
09070	APO ZIRNDORF GE 09070	FRA	B-C-D-U	APO FURTH GE 09696	FRA
09074	APO FRIEDBERG GE 09074	FRA	B-C-D-U	APO OFFENBACH GE 09082	FRA
09075	APO BURTONWOOD UK 09075	MAN	B-C-U3	NONE	
09076	APO BUDINGEN GE 09076	FRA	B-C-D-U	APO OFFENBACH GE 09082	FRA
09077	APO BUTZBACH GE 09077	FRA	B-C-D	APO OFFENBACH GE 09082	FRA
09078	APO MUENSTER GE 09078	FRA	B-C-D-U	APO OFFENBACH GE 09082	FRA
09079	APO FRANKFURT GE 09079	FRA	B-C-D-U	APO OFFENBACH GE 09082	FRA
09080	APO BAD GODESBERG GE 09080	FRA	B-C-D-U	APO OFFENBACH GE 09082	FRA
09081	APO SCHWETZINGEN GE 09081	FRA	B-C-D-U	APO HEIDELBERG GE 09102	FRA
09082	APO OFFENBACH GE 09082	FRA	B-C-D-U	APO OFFENBACH GE 09082	FRA
09083	APO RAF UXBRIDGE UK 09083	LON	B-C-U3	AMT CHICKSANDS UK 09151	LON
09086	APO KAEFERTAL GE 09086	FRA	B-C-D-U	APO OFFENBACH GE 09082	FRA

APO/FPO Makeup and Labeling Express Mail Military Service Listing by ZIP Code (Numeric)—Continued

ZIP Code	Label directs to	Air stop code	Restrictions	Collector sack	Air stop code
09088	APO CHIEVRES AB BE 09088	BRU	B1	AMT BRUSSELS BE 09153	BRU
09090	APO FRANKFURT GE 09090	FRA	B-C-D-U	APO OFFENBACH GE 09082	FRA
09091	APO GELNHAUSEN GE 09091	FRA	B-C-D-U	APO OFFENBACH GE 09082	FRA
09092	APO NURNBERG GE 09092	FRA	B-C-D-U	APO FURTH GE 09696	FRA
09093	APO NURNBERG GE 09093	FRA	B-C-D-U	APO FURTH GE 09696	FRA
09094	APO RAMSTEIN AB GE 09094	FRA	B-C-D	NONE	
09095	APO GERMERSHIEM GE 09095	FRA	B-C-D-U	APO HEIDELBERG GE 09102	FRA
09097	APO RHEIN MAIN AB GE 09097	FRA	B-C-D	AMT FRANKFURT GE 09060	FRA
09098	APO BAD AIBLING GE 09098	MUC	B-C-D-U	APO MUNICH GE 09108	MUC
09099	APO SECKENHEIM GE 09099	FRA	B-C-D-U	APO HEIDELBERG GE 09102	FRA
09102	APO HEIDELBERG GE 09102	FRA	B-C-D-U	APO HEIDELBERG GE 09102	FRA
09103	APO RHINEDAHLEN GE 09103	FRA	B-C-D-U	APO OFFENBACH GE 09082	FRA
09105	APO NURNBURG GE 09105	FRA	B-C-D-U	APO FURTH GE 09696	FRA
09107	APO MOHRINGEN GE 09107	FRA	B-C-D-U	APO STUTTGART GE 09154	FRA
09108	APO MUNICH GE 09108	MUC	B-C-D-U	APO MUNICH GE 09108	MUC
09109	APO HAHN GE 09109	FRA	B-C-D	NONE	
09110	APO DEXHEIM GE 09110	FRA	B-C-D-U	APO OFFENBACH GE 09082	FRA
09111	APO BAD KREUZNACH GE 09111	FRA	B-C-D-U	APO OFFENBACH GE 09082	FRA
09112	APO SORGHOF GE 09112	FRA	B-C-D-U	APO FURTH GE 09696	FRA
09114	APO GRAFENWOHR GE 09114	FRA	B-C-D-U	APO FURTH GE 09696	FRA
09120	APO WETHERSFIELD UK 09120	LON	B-C-U3	AMT CHICKSANDS UK 09151	LON
09122	APO HAHN AB GE 09122	FRA	B-C-D	NONE	
09123	APO SPANGDAHLEM AB GE 09123	FRA	B-C-D	AMT FRANKFURT GE 09060	FRA
09125	APO RAF FAIRFORD UK 09125	LON	B-C-U3	AMT CHICKSANDS UK 09151	LON
09126	APO SPANGDAHLEM AB GE 09126	FRA	B-C-D	AMT FRANKFURT GE 09060	FRA
09127	APO MILDENHALL UK 09127	LON	B-C-U3	AMT CHICKSANDS UK 09151	LON
09128	APO VAHINGEN GE 09128	FRA	B-C-D-U	APO STUTTGART GE 09154	FRA
09130	APO SEMBACH AB GE 09130	FRA	B-C-D	NONE	FRA
09131	APO VAHINGEN GE 09131	FRA	B-C-D-U	APO STUTTGART GE 09154	FRA
09132	APO BITBURG AB GE 09132	FRA	B-C-D	NONE	
09136	APO SEMBACH AB GE 09136	FRA	B-C-D	NONE	FRA
09137	APO GOPPINGEN GE 09137	FRA	B-C-D-U	APO STUTTGART GE 09154	FRA
09138	APO PIRMASENS GE 09138	FRA	B-C-D-U	APO KAISERSLAUTERN GE 09227	FRA
09139	APO BAMBERG GE 09139	FRA	B-C-D	APO FURTH GE 09696	FRA
09140	APO ILLESHEIM GE 09140	FRA	B-C-D-U	APO FURTH GE 09696	FRA
09141	APO BAD HERSFELD GE 09141	FRA	B-C-D-U	AMT FRANKFURT GE 09060	FRA
09142	APO SCHWABACH GE 09142	FRA	B-C-D-U	APO FURTH GE 09696	FRA
09143	APO GEISSEN GE 09143	FRA	B-C-D-U	AMT FRANKFURT GE 09060	FRA
09144	APO FISCHBACH GE 09144	FRA	B-C-D-U	APO KAISERSLAUTERN GE 09227	FRA
09146	APO FULDA GE 09146	FRA	B-C-D-U	AMT FRANKFURT GE 09060	FRA
09150	APO GREENHAM COMMON UK 09150	LON	B-C-U3	AMT CHICKSANDS UK 09151	LON
09151	AMT CHICKSANDS UK 09151	LON	B-C-U3	AMT CHICKSANDS UK 09151	LON
09153	AMT BRUSSELS BE 09153	BRU	B1	AMT BRUSSELS BE 09153	BRU
09154	APO STUTTGART GE 09154	FRA	B-C-D-U	APO STUTTGART GE 09154	FRA
09160	APO NELLINGEN GE 09160	FRA	B-C-D-U	APO STUTTGART GE 09154	FRA

## APO/FPO Makeup and Labeling Express Mail Military Service Listing by ZIP Code (Numeric)—Continued

ZIP Code	Label directs to	Air stop code	Restrictions	Collector sack	Air stop code
09162	APO ASCHAFFENBURG GE 09162	FRA	B-C-D-U	APO OFFENBACH GE 09082	FRA
09164	APO KARLSRUHE GE 09164	FRA	B-C-D-U	APO HEIDELBERG GE 09102	FRA
09165	APO HANAU GE 09165	FRA	B-C-D-U	APO OFFENBACH GE 09082	FRA
09166	APO MANNHEIM GE 09166	FRA	B-C-D-U	APO OFFENBACH GE 09082	FRA
09169	APO GIessen GE 09169	FRA	B-C-D-U	AMT FRANKFURT GE 09060	FRA
09171	APO MUENSTER GE 09171	FRA	B-C-D-U	APO OFFENBACH GE 09082	FRA
09172	APO OBERAMMERGAU GE 09172	MUC	B-C-D-U	APO MUNICH GE 09108	MUC
09173	APO HOHENFELS GE 09173	FRA	B-C-D-U	APO FURTH GE 09696	FRA
09175	APO DARMSTADT GE 09175	FRA	B-C-D-U	APO OFFENBACH GE 09082	FRA
09176	APO HEILBRONN GE 09176	FRA	B-C-D-U	APO STUTTGART GE 09154	FRA
09177	APO ANSBACH GE 09177	FRA	B-C-D-U	APO FURTH GE 09696	FRA
09178	APO AUGSBURG GE 09178	MUC	B-C-D-U	APO MUNICH GE 09108	MUC
09179	APO LAKENHEATH UK 09179	LON	B-C-U3	AMT CHICKSANDS UK 09151	LON
09180	APO LANDSTUHL GE 09180	FRA	B-C-D-U	APO KAISERSLAUTERN GE 09227	FRA
09182	APO GEIBELSTADT GE 09182	FRA	B-C-D-U	APO OFFENBACH GE 09082	FRA
09184	APO MUNICH GE 09184	MUC	B-C-D-U	APO MUNICH GE 09108	MUC
09185	APO MAINZ GE 09185	FRA	B-C-D-U	APO OFFENBACH GE 09082	FRA
09186	APO KAISERSLAUTERN GE 09186	FRA	B-C-D-U	APO KAISERSLAUTERN GE 09227	FRA
09188	APO FLORENNES BE 09188	BRU	B1	AMT BRUSSELS BE 09153	BRU
09189	APO PIRMASENS GE 09189	FRA	B-C-D-U	APO KAISERSLAUTERN GE 09227	FRA
09193	APO CHICKSANDS UK 09193	LON	B-C-U3	AMT CHICKSANDS UK 09151	LON
09194	APO UPPER HEYFORD UK 09194	LON	B-C-U3	AMT CHICKSANDS UK 09151	LON
09210	APO HARROGATE UK 09210	LBA	B-C-U3	NONE	
09211	APO DARMSTADT GE 09211	FRA	B-C-D-U	APO OFFENBACH GE 09082	FRA
09213	APO FRANKFURT GE 09213	FRA	B-C-D-U	APO OFFENBACH GE 09082	FRA
09215	APO HAMBURG GE 09215	FRA	B-C-D-U	APO OFFENBACH GE 09082	FRA
09220	APO WIESBADEN GE 09220	FRA	B-C-D	AMT FRANKFURT GE 09060	FRA
09223	APO ATHENS GR 09223	ATH	A-B1-X1	AMT ATHENS GR 09253	ATH
09227	APO KAISERSLAUTERN GE 09227	FRA	B-C-D-U	APO KAISERSLAUTERN GE 09227	FRA
09229	APO KAISERSLAUTERN GE 09229	FRA	B-C-D-U	APO KAISERSLAUTERN GE 09227	FRA
09236	APO RAF MOLESWORTH UK 09236	LON	B-C-U3	AMT CHICKSANDS UK 09151	LON
09238	APO ALCONBURY UK 09238	LON	B-C-U3	AMT CHICKSANDS UK 09151	LON
09241	APO HIGH WYCOMBE UK 09241	LON	B-C-U3	AMT CHICKSANDS UK 09151	LON
09245	APO MUNICH GE 09245	MUC	B-C-D-U	APO MUNICH GE 09108	MUC
09250	APO KATTRBACH KASERNE GE 09250	FRA	B-C-D-U	APO FURTH GE 09696	FRA
09252	APO BAD KREUZNACH GE 09252	FRA	B-C-D-U	APO OFFENBACH GE 09082	FRA
09253	APO ATHENS GR 09253	ATH	A-B1-X1	AMT ATHENS GR 09253	ATH
09255	APO ATHENS GR 09255	ATH	A-B1-X1	AMT ATHENS GR 09253	ATH
09279	APO LUDWIGSBURG GE 09279	FRA	B-C-D-U	APO STUTTGART GE 09154	FRA
09281	APO SCHWABISCH GE 09281	FRA	B-C-D-U	APO STUTTGART GE 09154	FRA
09283	APO TORREJON SP 09283	MAD	B	AMT MADRID SP 09401	MAD
09285	APO MADRID SP 09285	MAD	NONE	AMT MADRID SP 09401	MAD
09305	APO NEUBRUECKE GE 09305	FRA	B-C-D-U	NONE	
09322	APO IDAR-OBERSTEIN GE 09322	FRA	B-C-D-U	APO KAISERSLAUTERN GE 09227	FRA
09325	APO KAISERSLAUTERN GE 09325	FRA	B-C-D-U	APO KAISERSLAUTERN GE 09227	FRA
09326	APO ANSBACH GE 09326	FRA	B-C-D-U	APO FURTH GE 09696	FRA

APO/FPO Makeup and Labeling Express Mail Military Service Listing by ZIP Code (Numeric)—Continued

ZIP Code	Label directs to	Air stop code	Restrictions	Collector sack	Air stop code
09330	APO BAD KISSINGEN GE 09330	FRA	B-C-D-U	APO OFFENBACH GE 09082	FRA
09333	APO SECKENHEIM GE 09333	FRA	B-C-D-U	APO HEIDELBERG GE 09102	FRA
09351	APO ETTLINGEN GE 09351	FRA	B-C-D-U	APO HEIDELBERG GE 09102	FRA
09352	APO HERZOGENAURAUCH GE 09352	FRA	B-C-D-U	APO FURTH GE 09696	FRA
09353	APO WIESBADEN GE 09353	FRA	B-C-D-U	APO OFFENBACH GE 09082	FRA
09355	APO GARLSTEDT GE 09355	FRA	B-C-D-U	APO OFFENBACH GE 09082	FRA
09358	APO WIESBADEN GE 09358	FRA	B-C-D-U	APO OFFENBACH GE 09082	FRA
09359	APO ECHTERDINGEN GE 09359	FRA	B-C-D-U	APO STUTTGART GE 09154	FRA
09360	APO KNIELINGEN GE 09360	FRA	B-C-D-U	APO HEIDELBERG GE 09102	FRA
09378	APO CROUGHTON UK 09378	LON	B-C-U3	AMT CHICKSANDS UK 09151	LON
09401	APO MADRID SP 09401	MAD	B	AMT MADRID SP 09401	MAD
09403	APO HEIDELBERG GE 09403	FRA	B-C-D-U	APO HEIDELBERG GE 09102	FRA
09405	APO WOODBRIDGE UK 09405	LON	B-C-U3	AMT CHICKSANDS UK 09151	LON
09407	APO MUNICH GE 09407	MUC	B-C-D-U	APO MUNICH GE 09108	MUC
09411	APO BINDLACH GE 09411	FRA	B-C-D-U	APO FURTH GE 09696	FRA
09451	APO OBERURSEL GE 09451	FRA	B-C-D-U	APO OFFENBACH GE 09082	FRA
09452	APO AMBERG GE 09452	FRA	B-C-D-U	APO FURTH GE 09696	FRA
09454	APO GOPPINGEN GE 09454	FRA	B-C-D-U	APO STUTTGART GE 09154	FRA
09455	APO BABENHAUSEN GE 09455	FRA	B-C-D-U	APO OFFENBACH GE 09082	FRA
09457	APO WIESBADEN GE 09457	FRA	B-C-D-U	APO OFFENBACH GE 09082	FRA
09458	APO AUGSBURG GE 09458	MUC	B-C-D-U	APO MUNICH GE 09108	MUC
09509	FPO LONDON UK 09509	LON	B-C	NONE	
09510	FPO LONDON UK 09510	LON	B-C-U3	NONE	
09520	FPO NAPLES IT 09520	NAP	B-C-F-U-X-XI	NONE	
09521	FPO NAPLES IT 09521	NAP	B-C-F-U-X-XI	NONE	
09522	FPO NSA GASPÀ IT 09522	NAP	B-C-F-U-X-XI	NONE	
09523	FPO SIGONELLA IT 09523	CTA	B-C-F-U-X-XI	NONE	
09524	FPO NAPLES IT 09524	NAP	B-C-F-U-X-XI	NONE	
09525	FPO NEA MARRI GR 09525	ATH	A-B1-X1	AMT ATHENS GR 09253	ATH
09553	FPO LONDON UK 09553	LON	B-C	NONE	
09611	APO BERLIN GE 09611	BER	B-C-D	APO BERLIN GE 09742	BER
09633	APO LINDSEY AS GE 09633	FRA	B-C-D	AMT FRANKFURT GE 09060	FRA
09634	APO LINDSEY AS GE 09634	FRA	B-C-D	AMT FRANKFURT GE 09060	FRA
09666	APO MAIN KASTERL GE 09666	FRA	B-C-D-U	APO OFFENBACH GE 09082	FRA
09667	APO BRUSSELS BE 09667	BRU	B1	AMT BRUSSELS BE 09153	BRU
09669	APO HESSISCH-OLD GE 09669	FRA	B-C-D	AMT FRANKFURT GE 09060	FRA
09692	APO PREUM GE 09692	FRA	B-C-D	AMT FRANKFURT GE 09060	FRA
09693	APO THESSALONIKA GR 09693	ATH	A-B1-X1	NONE	
09694	APO COMISO IT 09694	CTA	B-C-F-U-X-XI	NONE	
09695	APO BUCHEL GE 09695	FRA	B-C-D-U	AMT FRANKFURT GE 09060	FRA
09696	APO FURTH GE 09696	FRA	B-C-D-U	APO FURTH GE 09696	FRA
09701	APO KITZINGEN GE 09701	FRA	B-C-D-U	APO OFFENBACH GE 09082	FRA
09702	APO SCHWEINFURT GE 09702	FRA	B-C-D-U	APO OFFENBACH GE 09082	FRA
09710	APO FRANKFURT GE 09710	FRA	B-C-D-U	APO OFFENBACH GE 09082	FRA
09711	APO DUESSELDORF GE 09711	FRA	B-C-D-U	APO OFFENBACH GE 09082	FRA
09712	APO RHEINBERG GE 09712	FRA	B-C-D-U	APO OFFENBACH GE 09082	FRA
09742	APO BERLIN GE 09742	BER	B-C-D-U	APO BERLIN GE 09742	BER
09751	APO CRAILSHEIM GE 09751	FRA	B-C-D-U	APO FURTH GE 09696	FRA
09755	APO BENTWATERS UK 09755	LON	B-C-U3	AMT CHICKSANDS UK 09151	LON
09757	APO FRANKFURT GE 09757	FRA	B-C-D-U	APO OFFENBACH GE 09082	FRA
09777	APO PARIS FR 09777	PAR	A-B-C-E	NONE	
09794	APO ROME IT 09794	ROM	B-C-F-U-X-XI	NONE	
09801	APO WURZBURG GE 09801	FRA	B-C-D-U	APO OFFENBACH GE 09082	FRA
09807	APO GIessen GE 09807	FRA	B-C-D-U	AMT FRANKFURT GE 09060	FRA

## APO/FPO Makeup and Labeling Express Mail Military Service Listing by ZIP Code (Numeric)—Continued

ZIP Code	Label directs to	Air stop code	Restrictions	Collector sack	Air stop code
09860	APO ZWEIBRUCKEN GE 09860	FRA	B-C-D	AMT FRANKFURT GE 09060	FRA
09872	APO ZWEIBRUCKEN GE 09872	FRA	B-C-D-U	APO KAISERSLAUTERN GE 09227	FRA
34001	APO HOWARD AFB PM 34001	PTY	B	AMF MIAMI FL 340	MIA
34002	APO ALBROOK AFB PM 34002	PTY	B	AMF MIAMI FL 340	MIA
34003	APO QUARRY HTS PM 34003	PTY	B	AMF MIAMI FL 340	MIA
34004	APO FORT CLAYTON PM 34004	PTY	B	AMF MIAMI FL 340	MIA
34005	APO FORT WM DAVIS PM 34005	PTY	B	AMF MIAMI FL 340	MIA
34006	APO FORT KOBBE PM 34006	PTY	B	AMF MIAMI FL 340	MIA
34007	APO FORT AMADOR PM 34007	PTY	B	AMF MIAMI FL 340	MIA
34008	APO FORT ESPINAR PM 34008	PTY	B	AMF MIAMI FL 340	MIA
34009	APO ALBROOK AFB PM 34009	PTY	B	AMF MIAMI FL 340	MIA
34011	APO PANAMA CANAL COMM PM 34011	PTY	B	AMF MIAMI FL 340	MIA
34059	FPO FORT AMADOR PM 34059	PTY	B	AMF MIAMI FL 340	MIA
34060	APO FORT ESPINAR PM 34060	PTY	B	AMF MIAMI FL 340	MIA
34061	FPO NAVSTA RODMAN PM 34061	PTY	B	AMF MIAMI FL 340	MIA
96204	APO SEOUL KE 96204	SEL	A-B	APO YONGSAN KE 96301	SEL
96206	APO SEOUL KE 96206	SEL	A-B	APO YONGSAN KE 96301	SEL
96209	APO SYDNEY AS 96209	SYD	A-B-H-M-U	NONE	
96224	APO TONGDUCHON-NI KE 96224	SEL	A-B	AMT KIMPO KE 96276	SEL
96230	APO KADENA AB RI 96230	OKA	B-L-M-W	AMT KADENA RI 96239	OKA
96239	APO KADENA AB RI 96239	OKA	B-M-W	AMT KADENA RI 96239	OKA
96264	APO KUNSAN KE 96264	SEL	A-B	AMT KIMPO KE 96276	SEL
96270	APO YOKOTA AB JA 96270	TYO	B-M-W	AMT YOKOTA JA 96328	TYO
96271	APO PYONGTEAK KE 96271	SEL	A-B	AMT KIMPO KE 96276	SEL
96274	APO CLARK AB RP 96274	MNL	B-F-K	APO CLARK AB RP 96274	MNL
96276	APO KIMPO KE 96276	SEL	A-B	AMT KIMPO KE 96276	SEL
96286	APO CLARK AB RP 96286	MNL	B-F-K-L	APO CLARK AB RP 96274	MNL
96293	APO YOKOTA AB JA 96293	TYO	B-M-W	AMT YOKOTA JA 96328	TYO
96301	APO YONGSAN KE 96301	SEL	A-B	APO YONGSAN KE 96301	SEL
96302	APO YONGSAN KE 96302	SEL	A-B	APO YONGSAN KE 96301	SEL
96311	APO CLARK AB RP 96311	MNL	B-F-K-L	APO CLARK AB RP 96274	MNL
96328	APO YOKOTA AB JA 96328	TYO	B-M-W	AMT YOKOTA JA 96328	TYO
96343	APO CAMP ZAMA JA 96343	TYO	B-M-W	AMT YOKOTA JA 96328	TYO
96346	APO BANGKOK TH 96346	BKK	F-U	NONE	
96358	APO UJONGBU KE 96358	SEL	A-B	AMT KIMPO KE 96276	SEL
96361	APO YOKOTA AB JA 96361	TYO	B-M-W	AMT YOKOTA JA 96328	TYO
96366	APO OSAN AB KE 96366	SEL	A-B	AMT KIMPO KE 96276	SEL
96367	APO KADENA AB RI 96367	OKA	B-L-M-W	AMT KADENA RI 96239	OKA
96371	APO KIMPO KE 96371	SEL	A-B	AMT KIMPO KE 96276	SEL
96408	APO CLARK AB RP 96408	MNL	B-F-K-L	APO CLARK AB RP 96274	MNL
96410	APO CLARK AB RP 96410	MNL	B-F-K-L	APO CLARK AB RP 96274	MNL
96431	APO CLARK AB RP 96431	MNL	B-F-K	APO CLARK AB RP 96274	MNL
96432	APO CLARK AB RP 96432	MNL	B-F-K	APO CLARK AB RP 96274	MNL
96434	APO CLARK AB RP 96434	MNL	P	APO CLARK AB RP 96274	MNL
96461	APO SUMON KE 96461	SEL	A-B	AMT KIMPO KE 96276	SEL
96503	APO CAMP ZAMA JA 96503	TYO	B-M-W	AMT YOKOTA JA 96328	TYO
96524	APO CAMP STANLEY KE 96524	SEL	A-B	AMT KIMPO KE 96276	SEL
96528	APO MANILA RP 96528	MNL	B-F-K	NONE	
96570	APO OSAN KE 96570	SEL	A-B	AMT KIMPO KE 96276	SEL
96571	APO PYONGTAEK KE 96571	SEL	A-B	AMT KIMPO KE 96276	SEL
96650	FPO SUBIC BAY RP 96650	MNL	B-F-K	FPO SUBIC BAY RP 96650	MNL

**APO/FPO Makeup and Labeling Express Mail Military Service Listing by ZIP Code (Numeric)—Continued**

ZIP Code	Label directs to	Air stop code	Restrictions	Collector sack	Air stop code
96651	FPO SUBIC BAY RP 96651	MNL	B-F-K	FPO SUBIC BAY RP 96650	MNL
96652	FPO SUBIC BAY RP 96652	MNL	B-F-K	FPO SUBIC BAY RP 96650	MNL
96654	FPO CUBI POINT RP 96654	MNL	B-F-K	FPO SUBIC BAY RP 96650	MNL
98760	FPO YOKOHAMA JA 98760	TYO	B-M-W	FPO YOKOHAMA JA 98760	TYO
98761	FPO YOKOHAMA JA 98761	TYO	B-M-W	FPO YOKOHAMA JA 98760	TYO
98762	FPO YOKOSUKA JA 98762	TYO	B-M-W	FPO YOKOHAMA JA 98760	TYO
98765	FPO YOKOSUKA JA 98765	TYO	B-M-W	FPO YOKOHAMA JA 98760	TYO
98767	FPO ATSUGI JA 98767	TYO	B-M-W	FPO YOKOHAMA JA 98760	TYO
98768	FPO KAMISEYA JA 98768	TYO	B-M-W	FPO YOKOHAMA JA 98760	TYO
98770	FPO KADENA RI 98770	OKA	B-M-W	AMT KADENA RI 96239	OKA
98773	FPO KAWASAKI RI 98773	OKA	B-M-W	NONE	

**APO/FPO Makeup and Labeling Express Mail Military Service Listing by Collector Sack**

ZIP Code	Label directs pouches to	Air stop code	Restrictions
	Label Collector Sack to: AMF MIAMI FL 340	MIA	
34001	APO HOWARD AFB PM 34001	PTY	B
34002	APO ALBROOK AFB PM 34002	PTY	B
34003	APO QUARRY HTB PM 34003	PTY	B
34004	APO FORT CLAYTON PM 34004	PTY	B
34005	APO FORT WM DAVIS PM 34005	PTY	B
34006	APO FORT KOBBE PM 34006	PTY	B
34007	APO FORT AMADOR PM 34007	PTY	B
34008	APO FORT ESPINAR PM 34008	PTY	B
34009	APO ALBROOK AFB PM 34009	PTY	B
34011	APO PANAMA CANAL COMM PM 34011	PTY	B
34059	FPO FORT AMADOR PM 34059	PTY	B
34060	APO FORT ESPINAR PM 34060	PTY	B
34061	FPO NAVSTA RODMAN PM 34061	PTY	B
	Label Collector Sack to: AMT ATHENS GR 09253	ATH	
09223	APO ATHENS GR 09223	ATH	A-B1-X1
09253	APO ATHENS GR 09253	ATH	A-B1-X1
09255	APO ATHENS GR 09255	ATH	A-B1-X1
09525	FPO NEA MAKRI GR 09525	ATH	A-B1-X1
	Label Collector Sack to: AMT BRUSSELS BE 09153	BRU	
09055	APO SHAPE BE 09055	BRU	B1
09088	APO CHIEVRES AB BE 09088	BRU	B1
09153	AMT BRUSSELS BE 09153	BRU	B1
09188	APO FLORENNES BE 09188	BRU	B1
09667	APO BRUSSELS BE 09667	BRU	B1
	Label Collector Sack to: AMT CHICKSANDS UK 09151	LON	
09083	APO RAF UXBRIDGE UK 09083	LON	B-C-U3
09120	APO WETHERSFIELD UK 09120	LON	B-C-U3
09125	APO RAF FAIRFORD UK 09125	LON	B-C-U3
09127	APO MILDENHALL UK 09127	LON	B-C-U3
09150	APO GREENHAM COMMON UK 09150	LON	B-C-U3
09151	AMT CHICKSANDS UK 09151	LON	B-C-U3
09179	APO LAKENHEATH UK 09179	LON	B-C-U3
09193	APO CHICKSANDS UK 09193	LON	B-C-U3
09194	APO UPPER HEYFORD UK 09194	LON	B-C-U3
09236	APO RAF MOLESWORTH UK 09236	LON	B-C-U3
09238	APO ALCONBURY UK 09238	LON	B-C-U3
09241	APO HIGH WYCOMBE UK 09241	LON	B-C-U3
09378	APO CROUGHTON UK 09378	LON	B-C-U3
09405	APO WOODBRIDGE UK 09405	LON	B-C-U3
09755	APO BENTWATERS UK 09755	LON	B-C-U3

## APO/TPO Makeup and Labeling Express Mail Military Service Listing by Collector Sack—Continued

ZIP Code	Label directs pouches to	Air stop code	Restrictions
	Label Collector Sack to: AMT FRANKFURT GE 09060 .....	FRA	
09008 .....	APO NIEDERRAD GE 09008 .....	FRA	B-C-D
09021 .....	APO KAPAUN AS GE 09021 .....	FRA	B-C-D
09057 .....	APO RHEIN MAIN AB GE 09057 .....	FRA	B-C-D
09060 .....	APO FRANKFURT GE 09060 .....	FRA	B-C-D
09097 .....	APO RHEIN MAIN AB GE 09097 .....	FRA	B-C-D
09123 .....	APO SPANGDAHLEM AB GE 09123 .....	FRA	B-C-D
09126 .....	APO SPANGDAHLEM AB GE 09126 .....	FRA	B-C-D
09141 .....	APO BAD HERSFELD GE 09141 .....	FRA	B-C-D-U
09143 .....	APO GIessen GE 09143 .....	FRA	B-C-D-U
09146 .....	APO FULDA GE 09146 .....	FRA	B-C-D-U
09169 .....	APO GIessen GE 09169 .....	FRA	B-C-D-U
09220 .....	APO WIESBADEN GE 09220 .....	FRA	B-C-D
09633 .....	APO LINDSEY AS GE 09633 .....	FRA	B-C-D
09634 .....	APO LINDSEY AS GE 09634 .....	FRA	B-C-D
09669 .....	APO HESSISCH-OLD GE 09669 .....	FRA	B-C-D
09692 .....	APO PREUM GE 09692 .....	FRA	B-C-D
09695 .....	APO BUCHEL GE 09695 .....	FRA	B-C-D-U
09807 .....	APO GIessen GE 09807 .....	FRA	B-C-D-U
09860 .....	APO ZWEIBRUCKEN GE 09860 .....	FRA	B-C-D
	Label Collector Sack to: AMT KADENA RI 96239 .....	OKA	
96230 .....	APO KADENA AB RI 96230 .....	OKA	B-L-M-W
96239 .....	APO KADENA AB RI 96239 .....	OKA	B-M-W
96367 .....	APO KADENA AB RI 96367 .....	OKA	B-L-M-W
98770 .....	FPO KADENA RI 98770 .....	OKA	B-M-W
	Label Collector Sack to: AMT KIMPO KE 96276 .....	SEL	
96224 .....	APO TONGDUCHON-NI KE 96224 .....	SEL	A-B
96264 .....	APO KUNSAN KE 96264 .....	SEL	A-B
96271 .....	APO PYONGTEAK KE 96271 .....	SEL	A-B
96276 .....	APO KIMPO KE 96276 .....	SEL	A-B
96358 .....	APO UIJONGBU KE 96358 .....	SEL	A-B
96366 .....	APO OSAN AB KE 96366 .....	SEL	A-B
96371 .....	APO KIMPO KE 96371 .....	SEL	A-B
96461 .....	APO SUWON KE 96461 .....	SEL	A-B
96524 .....	APO CAMP STANLEY KE 96524 .....	SEL	A-B
96570 .....	APO OSAN KE 96570 .....	SEL	A-B
96571 .....	APO PYONGTAEK KE 96571 .....	SEL	A-B
	Label Collector Sack to: AMT MADRID SP 09401 .....	MAD	
09283 .....	APO TORREJON SP 09283 .....	MAD	B
09285 .....	APO MADRID SP 09285 .....	MAD	NONE
09401 .....	APO MADRID SP 09401 .....	MAD	B
	Label Collector Sack to: AMT YOKOTA JA 96328 .....	TYO	
96270 .....	APO YOKOTA AB JA 96270 .....	TYO	B-M-W
96293 .....	APO YOKOTA AB JA 96293 .....	TYO	B-M-W
96328 .....	APO YOKOTA AB JA 96328 .....	TYO	B-M-W
96343 .....	APO CAMP ZAMA JA 96343 .....	TYO	B-M-W
96361 .....	APO YOKOTA AB JA 96361 .....	TYO	B-M-W
96503 .....	APO CAMP ZAMA JA 96503 .....	TYO	B-M-W
	Label Collector Sack to: APO BERLIN GE 09742 .....	BER	
09611 .....	APO BERLIN GE 09611 .....	BER	B-C-D
09742 .....	APO BERLIN GE 09742 .....	BER	B-C-D-U



APO/FPO Makeup and Labeling Express Mail Military Service Listing by Collector Sack—Continued

ZIP Code	Label directs pouches to	Air stop code	Restrictions
	Label Collector Sack to: APO CLARK AB RP 96274 .....	MNL	
96274 .....	APO CLARK AB RP 96274 .....	MNL	B-F-K
96286 .....	APO CLARK AB RP 96286 .....	MNL	B-F-K-L
96311 .....	APO CLARK AB RP 96311 .....	MNL	B-F-K-L
96408 .....	APO CLARK AB RP 96408 .....	MNL	B-F-K-L
96410 .....	APO CLARK AB RP 96410 .....	MNL	B-F-K-L
96431 .....	APO CLARK AB RP 96431 .....	MNL	B-F-K
96432 .....	APO CLARK AB RP 96432 .....	MNL	B-F-K
96434 .....	APO CLARK AB RP 96434 .....	MNL	P
	Label Collector Sack to: APO FURTH GE 09696 .....	FRA	
09066 .....	APO ERLANGEN GE 09066 .....	FRA	B-C-D-U
09068 .....	APO FURTH GE 09068 .....	FRA	B-C-D-U
09070 .....	APO ZIRNDORF GE 09070 .....	FRA	B-C-D-U
09092 .....	APO NURNBERG GE 09092 .....	FRA	B-C-D-U
09093 .....	APO NURNBERG GE 09093 .....	FRA	B-C-D-U
09105 .....	APO NURNBURG GE 09105 .....	FRA	B-C-D-U
09112 .....	APO SORGHOF GE 09112 .....	FRA	B-C-D-U
09114 .....	APO GRAFENWOHR GE 09114 .....	FRA	B-C-D-U
09139 .....	APO BAMBERG GE 09139 .....	FRA	B-C-D
09140 .....	APO ILLESHEIM GE 09140 .....	FRA	B-C-D-U
09142 .....	APO SCHWABACH GE 09142 .....	FRA	B-C-D-U
09173 .....	APO HOHENFELS GE 09173 .....	FRA	B-C-D-U
09177 .....	APO ANSBACH GE 09177 .....	FRA	B-C-D-U
09250 .....	APO KATTRBACH KASERNE GE 09250 .....	FRA	B-C-D-U
09326 .....	APO ANSBACH GE 09326 .....	FRA	B-C-D-U
09352 .....	APO HERZOGENAURAUCH GE 09352 .....	FRA	B-C-D-U
09411 .....	APO BINDLACH GE 09411 .....	FRA	B-C-D-U
09452 .....	APO AMBERG GE 09452 .....	FRA	B-C-D-U
09696 .....	APO FURTH GE 09696 .....	FRA	B-C-D-U
09751 .....	APO CRAILSHEIM GE 09751 .....	FRA	B-C-D-U
	Label Collector Sack to: APO HEIDELBERG GE 09102 .....	FRA	
09007 .....	APO SCHWETZINGEN GE 09007 .....	FRA	B-C-D-U
09063 .....	APO HEIDELBERG GE 09063 .....	FRA	B-C-D-L-U
09081 .....	APO SCHWETZINGEN GE 09081 .....	FRA	B-C-D-U
09095 .....	APO GERMERSHIEM GE 09095 .....	FRA	B-C-D-U
09099 .....	APO BECKENHEIM GE 09099 .....	FRA	B-C-D-U
09102 .....	APO HEIDELBERG GE 09102 .....	FRA	B-C-D-U
09164 .....	APO KARLSRUHE GE 09164 .....	FRA	B-C-D-U
09333 .....	APO SECKENHEIM GE 09333 .....	FRA	B-C-D-U
09351 .....	APO ETTLINGEN GE 09351 .....	FRA	B-C-D-U
09360 .....	APO KNIELINBEN GE 09360 .....	FRA	B-C-D-U
09403 .....	APO HEIDELBERG GE 09403 .....	FRA	B-C-D-U
	Label Collector Sack to: APO KAISERSLAUTERN GE 09227.	FRA	
09034 .....	APO BAUMHOLDER GE 09034 .....	FRA	B-C-D-U
09052 .....	APO ZWEIBRUCKEN GE 09052 .....	FRA	B-C-D-U
09054 .....	APO KAISERSLAUTERN GE 09054 .....	FRA	B-C-D-U
09059 .....	APO MIESAU GE 09059 .....	FRA	B-C-D-U
09067 .....	APO KAISERSLAUTERN GE 09067 .....	FRA	B-C-D-U
09138 .....	APO PIRMASENS GE 09138 .....	FRA	B-C-D-U
09144 .....	APO FISCHBACH GE 09144 .....	FRA	B-C-D-U
09180 .....	APO LANDSTUHL GE 09180 .....	FRA	B-C-D-U
09186 .....	APO KAISERSLAUTERN GE 09186 .....	FRA	B-C-D-U
09189 .....	APO PIRMASENS GE 09189 .....	FRA	B-C-D-U
09227 .....	APO KAISERSLAUTERN GE 09227 .....	FRA	B-C-D-U
09229 .....	APO KAISERSLAUTERN GE 09229 .....	FRA	B-C-D-U
09322 .....	APO IDAR-OBERSTEIN GE 09322 .....	FRA	B-C-D-U
09325 .....	APO KAISERSLAUTERN GE 09325 .....	FRA	B-C-D-U
09872 .....	APO ZWEIBRUCKEN GE 09872 .....	FRA	B-C-D-U

## APO/FPO Makeup and Labeling Express Mail Military Service Listing by Collector Sack—Continued

ZIP Code	Label directs pouches to	Air stop code	Restrictions
	Label Collector Sack to: APO MUNICH GE 09108.....	MUC	
09029.....	APO BERCHTESGADEN GE 09029.....	MUC	B-C-D-U
09050.....	APO BAD TOLZ GE 09050.....	MUC	B-C-D-U
09053.....	APO GARMISCH GE 09053.....	MUC	B-C-D-U
09098.....	APO BAD AIBLING GE 09098.....	MUC	B-C-D-U
09108.....	APO MUNICH GE 09108.....	MUC	B-C-D-U
09172.....	APO OBERAMMERGAU GE 09172.....	MUC	B-C-D-U
09178.....	APO AUGSBURG GE 09178.....	MUC	B-C-D-U
09184.....	APO MUNICH GE 09184.....	MUC	B-C-D-U
09245.....	APO MUNICH GE 09245.....	MUC	B-C-D-U
09407.....	APO MUNICH GE 09407.....	MUC	B-C-D-U
09458.....	APO AUGSBURG GE 09458.....	MUC	B-C-D-U
	Label Collector Sack to: APO OFFENBACH GE 09082.....	FRA	
09011.....	APO BRUNSSUM NL 09011.....	FRA	B1-C-F1
09026.....	APO WILDFLECKEN GE 09026.....	FRA	B-C-D-U
09028.....	APO SANDHOFEN GE 09028.....	FRA	B-C-D-U
09031.....	APO KITZINGEN GE 09031.....	FRA	B-C-D-U
09033.....	APO SCHWEINFURT GE 09033.....	FRA	B-C-D-U
09036.....	APO WURZBURG GE 09036.....	FRA	B-C-D-U
09039.....	APO FRANKFURT GE 09039.....	FRA	B-C-D-U
09045.....	APO KIRCHGOENS GE 09045.....	FRA	B-C-D-U
09047.....	APO WERTHEIM GE 09047.....	FRA	B-C-D-U
09056.....	APO WORMS GE 09056.....	FRA	B-C-D-U
09058.....	APO WORMS GE 09058.....	FRA	B-C-D-U
09069.....	APO BREMERHAVEN GE 09069.....	FRA	B-C-D-U
09074.....	APO FRIEDBERG GE 09074.....	FRA	B-C-D-U
09076.....	APO BUDINGEN GE 09076.....	FRA	B-C-D-U
09077.....	APO BUTZBACH GE 09077.....	FRA	B-C-D
09078.....	APO MUENSTER GE 09078.....	FRA	B-C-D-U
09079.....	APO FRANKFURT GE 09079.....	FRA	B-C-D-U
09080.....	APO BAD GODESBERG GE 09080.....	FRA	B-C-D-U
09082.....	APO OFFENBACH GE 09082.....	FRA	B-C-D-U
09086.....	APO KAEFERTAL GE 09086.....	FRA	B-C-D-U
09090.....	APO FRANKFURT GE 09090.....	FRA	B-C-D-U
09091.....	APO GELNHAUSEN GE 09091.....	FRA	B-C-D-U
09103.....	APO RHINEDAHLEN GE 09103.....	FRA	B-C-D-U
09110.....	APO DEXHEIM GE 09110.....	FRA	B-C-D-U
09111.....	APO BAD KREUZNACH GE 09111.....	FRA	B-C-D-U
09162.....	APO ASCHAFFENBURG GE 09162.....	FRA	B-C-D-U
09165.....	APO HANAU GE 09165.....	FRA	B-C-D-U
09166.....	APO MANNHEIM GE 09166.....	FRA	B-C-D-U
09171.....	APO MUENSTER GE 09171.....	FRA	B-C-D-U
09175.....	APO DARMSTADT GE 09175.....	FRA	B-C-D-U
09182.....	APO GIEBELSTADT GE 09182.....	FRA	B-C-D-U
09185.....	APO MAINZ GE 09185.....	FRA	B-C-D-U
09211.....	APO DARMSTADT GE 09211.....	FRA	B-C-D-U
09213.....	APO FRANKFURT GE 09213.....	FRA	B-C-D-U
09215.....	APO HAMBURG GE 09215.....	FRA	B-C-D-U
09252.....	APO BAD KREUZNACH GE 09252.....	FRA	B-C-D-U
09330.....	APO BAD KISSINGEN GE 09330.....	FRA	B-C-D-U
09353.....	APO WIESBADEN GE 09353.....	FRA	B-C-D-U
09355.....	APO GARLSTEDT GE 09355.....	FRA	B-C-D-U
09358.....	APO WIESBADEN GE 09358.....	FRA	B-C-D-U
09451.....	APO OBERURSEL GE 09451.....	FRA	B-C-D-U
09455.....	APO BABENHAUSEN GE 09455.....	FRA	B-C-D-U
09457.....	APO WIESBADEN GE 09457.....	FRA	B-C-D-U
09666.....	APO MAINZ KASTERL GE 09666.....	FRA	B-C-D-U
09701.....	APO KITZINGEN GE 09701.....	FRA	B-C-D-U
09702.....	APO SCHWEINFURT GE 09702.....	FRA	B-C-D-U
09710.....	APO FRANKFURT GE 09710.....	FRA	B-C-D-U
09711.....	APO DUESSELDORF GE 09711.....	FRA	B-C-D-U
09712.....	APO RHEINBERG GE 09712.....	FRA	B-C-D-U
09757.....	APO FRANKFURT GE 09757.....	FRA	B-C-D-U
09801.....	APO WURZBURG GE 09801.....	FRA	B-C-D-U
	Label Collector Sack to: APO STUTTGART GE 09154.....	FRA	

**APO/TPO Makeup and Labeling Express Mail Military Service Listing by Collector Sack—Continued**

ZIP Code	Label directs pouches to	Air stop code	Restrictions
09025	APO SCHWABISH HALL GE 09025	FRA	B-C-D-U
09035	APO NEU ULM GE 09035	FRA	B-C-D-U
09046	APO BOBLINGEN GE 09046	FRA	B-C-D-U
09061	APO NELLINGEN GE 09061	FRA	B-C-D-U
09107	APO MOHRINGEN GE 09107	FRA	B-C-D-U
09128	APO VAIHINGEN GE 09128	FRA	B-C-D-U
09131	APO VAIHINGEN GE 09131	FRA	B-C-D-U
09137	APO GOPPINGEN GE 09137	FRA	B-C-D-U
09154	APO STUTTGART GE 09154	FRA	B-C-D-U
09160	APO NELLINGEN GE 09160	FRA	B-C-D-U
09176	APO HEILBRONN GE 09176	FRA	B-C-D-U
09279	APO LUDWIGSBURG GE 09279	FRA	B-C-D-U
09281	APO SCHWABISCH GE 09281	FRA	B-C-D-U
09359	APO ECHTERDINGEN GE 09359	FRA	B-C-D-U
09454	APO GOPPINGEN GE 09454	FRA	B-C-D-U
	Label Collector Sack to: APO YONGSAN KE 96301	SEL	
96204	APO SEOUL KE 96204	SEL	A-B
96206	APO SEOUL KE 96206	SEL	A-B
96301	APO YONGSAN KE 96301	SEL	A-B
96302	APO YONGSAN KE 96302	SEL	A-B
	Label Collector Sack to: FPO SUBIC BAY RP 96650	MNL	
96650	FPO SUBIC BAY RP 96650	MNL	B-F-K
96651	FPO SUBIC BAY RP 96651	MNL	B-F-K
96652	FPO SUBIC BAY RP 96652	MNL	B-F-K
96654	FPO CUBI POINT RP 96654	MNL	B-F-K
	Label Collector Sack to: FPO YOKOHAMA JA 98760	TYO	
98760	FPO YOKOHAMA JA 98760	TYO	B-M-W
98761	FPO YOKOHAMA JA 98761	TYO	B-M-W
98762	FPO YOKOSUKA JA 98762	TYO	B-M-W
98765	FPO YOKOSUKA JA 98765	TYO	B-M-W
98767	FPO ATSUGI JA 98767	TYO	B-M-W
98768	FPO KAMISEYA JA 98768	TYO	B-M-W
	Label Collector Sack to: NONE		
09009	APO RAMSTEIN GE 09009	FRA	B-C-D
09012	APO RAMSTEIN GE 09012	FRA	B-C-D
09038	APO RIYADH SA 09038	RUH	B-E2-F-H1-R-UI
09075	APO BURTONWOOD UK 09075	MAN	B-C-U3
09094	APO RAMSTEIN AB GE 09094	FRA	B-C-D
09109	APO HAHN GE 09109	FRA	B-C-D
09122	APO HAHN AB GE 09122	FRA	B-C-D
09130	APO SEMBACH AB GE 09130	FRA	B-C-D
09132	APO BITBURG AB GE 09132	FRA	B-C-D
09136	APO SEMBACH AB GE 09136	FRA	B-C-D
09210	APO HARROGATE UK 09210	LBA	B-C-U3
09305	APO NEUBRUECKE GE 09305	FRA	B-C-D-U
09509	FPO LONDON UK 09509	LON	B-C
09510	FPO LONDON UK 09510	LON	B-C-U3
09520	FPO NAPLES IT 09520	NAP	B-C-F-U-X-X1
09521	FPO NAPLES IT 09521	NAP	B-C-F-U-X-X1
09522	FPO NSA GAETA IT 09522	NAP	B-C-F-U-X-X1
09523	FPO SIGONELLA IT 09523	CTA	B-C-F-U-X-X1
09524	FPO NAPLES IT 09524	NAP	B-C-F-U-X-X1
09553	FPO LONDON UK 09553	LON	B-C
09693	APO THESSALONIKA GR 09693	ATH	A-B1-X1
09694	APO COMISO IT 09694	CTA	B-C-F-U-X-X1
09777	APO PARIS FR 09777	PAR	A-B-C-E
09794	APO ROME IT 09794	ROM	B-C-F-U-X-X1
96209	APO SYDNEY AS 96209	SYD	A-B-H-M-U
96346	APO BANGKOK TH 96346	BKK	F-U
96528	APO MANILA RP 96528	MNL	B-F-K
98773	FPO KAWASAKI RI 98773	OKA	B-M-W

**Conditions Applied to Express Mail Military Service Overseas Destinations**

A. No mail of any class may contain securities or currency. Precious metals in their raw, unmanufactured state are also prohibited. Official shipments are exempt from these restrictions.

B. Form 2966-A, Parcel Post Customs Declaration--United States of America (one part customs declaration), required except prepaid mail from a contractor addressed to a military organization for official use NEED NOT bear Customs Declaration, but must be endorsed "Contents For Official Use--Exempt from Customs Requirement. Official mail from Government agencies DOES NOT require Customs Declaration or exemption endorsement."

B1. Form 2966-B, Parcel Post Customs Declaration and Dispatch Note (3-part customs document), required. Articles will be liable for customs duty and/or purchase tax unless they are bona fide gifts, personal use intended for military personnel or their dependents. When the contents of a parcel meet these requirements, the mailer should place a certificate similar to the following on the customs form under the heading, Description of Contents--Certified to be a bona fide gift, personal effects or items for personal use of military personnel and dependents thereto.

B2. Form 2966-A, Parcel Post Customs Declaration--United States of America (one part customs declaration), required except on official mail which does not require customs declaration or exemption endorsement. Army and Air Force Exchange Service (AAFES) will furnish a computer listing on all items mailed from their activities to Philippine APOs indicated. Other major order companies will either use Form 2966-A on each item or provide computer lists. These listings should include description of item, dollar value of item, complete address including PSC box number and APO of addressee, date of mailing, insurance or registry number if applicable, and serial number of any item over \$25 in value and any electrical item with a plug over \$15 in value.

B3. Form 2966-A, Parcel Post Customs Declaration-- United States of America (one page customs declaration), is required for mailing between MPOs, except prepaid mail from contractors addressed to a military organization for official use NEED NOT bear customs declaration, but must be endorsed, "Contents for Official Use--Exempt from Customs Requirement." Official mail from government agencies does not require customs declaration or exemption endorsement.

C. Cigarettes and other tobacco products prohibited.

D. Coffee prohibited.

E1. Mail may not contain medicines or vaccines not conforming to French laws.

E2. Mail may not contain any matter containing religious materials contrary to Islamic faith or depicting nude or seminude persons, pornographic or sexual items, or nonauthorized political materials.

E3. No mail may contain radio transceivers or cordless telephones.

F. Mail of all classes may not contain firearms of any type. See definition of firearms in DMM 124.5. Exception: Not applicable to firearms mailed to or by official U.S. government agencies.

F1. No mail of any class may contain privately owned weapons addressed to an individual.

F2. "Importation of firearms is restricted to one shotgun and one single shot 22 caliber rifle per individual."

G. Only First-Class letters, second- and third-class mail authorized.

H. Meats, including preserved meats, whether hermetically sealed or not, are prohibited.

H1. Pork and/or pork by-products prohibited.

I. Mail of all classes may not exceed the following dimensions:

*Length*

42" .....	72" length and girth combined.
over 42" to 44" .....	24" girth
over 44" to 46" .....	20" girth
over 46" to 48" .....	16" girth
Maximum length 48"	

I1. Provisions of this footnote are not applicable to registered mail.

I2. Provisions of this footnote are not applicable to official Government mail marked MOM.

K. Mail which includes in the address the words "Dependent Mail Section" may consist only of letter mail, newspapers, magazines and books. No parcel of any class containing any other matter may be mailed to Dependent Mail Section. This footnote is not applicable if the address does not include the words "Dependent Mail Section."

L. All official mail prohibited.

M. Fruits, animals, and living plants are prohibited.

N. No registered mail accepted.

O. Personal mail addressed to vessels using this number is limited to unregistered First-Class Mail, and certified mail. Other classes of mail may not be accepted.

P. APO will be used for the receipt and dispatch of official mail only.

Q. Mail may not exceed 66 pounds, and size is limited to 42 inches maximum length and 72 inches maximum length and girth combined.

R. All alcoholic beverages, including those mailable under DMM part 124.42 are prohibited.

T. Mailings of case lots of food and supplemental household shipments must be approved by the sender's parent agency prior to mailing.

U. Parcels must weigh less than 16 ounces when addressed to Box R. This restriction does not apply to mail endorsed "Free Matter for the Blind or Handicapped."

U1. Limited to First-Class Mail weighing 12 ounces or less when addressed to Box R. This restriction does not apply to mail endorsed "Free Matter for the Blind or Handicapped." Video tapes prohibited when addressed to Box R regardless of weight.

U2. Limited to First-Class letters only when addressed to Box R.

U3. Limited to letter class mail and magazines not exceeding 16 ounces when addressed to Box R.

W. Meat products, such as dried beef, salami, and sausage may be mailed, provided they remain in their original, hermetically sealed package and bear USDA certification. Mail may not contain other meats, bones, skin, hair, feathers, horns or hoofs of hooved animals, wool samples, tobacco leaves (200 grams of tobacco per parcel are permitted duty free--this includes chewing and pipe tobacco, snuff, cigars, and cigarettes), or obscene material, including obscene drawings, photographs, films, carvings, etc.

X. No outside pieces (OSPs).

X1. Tin band seal required on pouches.

**NO MAIL-ORDER CATALOGS MAY BE MAILED AS SAM OR PAL**

**FEBRUARY 1989**

# Have you seen any of these children?

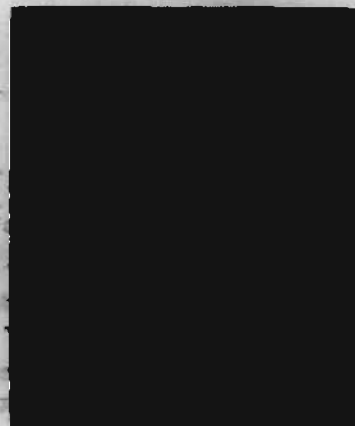
Participate in the NALC/USPS Child Alert Program. Tear out this page and carry it with you. If you have information on any of these missing children, tell your postal supervisor.



**Tristan Nicholas Carver**  
 Born: 2-23-87  
 Date Missing: 5-6-88  
 From: Tulsa, OK



**William Ervin Fulmer, Jr.**  
 Born: 11-28-76  
 Date Missing: 8-23-84  
 From: Tega Cay, SC



**Martha Leanne Green**  
 Born: 2-24-70  
 Date Missing: 4-15-87  
 From: White Bluff, TN



**Jennifer Lee Martin**  
 Born: 1-14-76  
 Date Missing: 6-28-87  
 From: Reno, NV



**Galvin Lee Sidden**  
 Born: 8-23-71  
 Date Missing: 8-23-81  
 From: North Wilkesboro, NC



**Chevelle Yvonne Wheeler**  
 Born: 10-27-68  
 Date Missing: 10-16-85  
 From: Stockton, CA

**Please Call the National Center for Missing and Exploited Children—**

**HOT LINE 1-800-843-5678**

#### **Missing Children Poster Display Instructions**

Please display this poster prominently on bulletin boards in retail lobbies of main post offices, classified stations and branches. Please remove and discard previous versions. At their option, operators of contract postal units may display this poster.

Companion posters, authorized for display on bulletin boards maintained by employee organizations, appear periodically in *The Postal Record*, a publication for members of the National Association of Letter Carriers.

This poster is published in cooperation with the National Center for Missing and Exploited Children, the United States Department of Justice, and the National Association of Letter Carriers. Information appearing on this poster is selected solely by the National Center for Missing and Exploited Children. For policy and information on Postal Service support in efforts to recover missing children, see POSTAL BULLETIN 21536, page 1, October 17, 1985.

Missing Children Posters are available from the U.S. Postal Service *only* through periodic issues of the POSTAL BULLETIN.



Copyright U.S. Postal Service 1989

Issue Date: March 3, 1989

First Day City: New Orleans, Louisiana

Designer and Typographer: Richard Schlecht,  
Arlington, Virginia

Art Director: Howard Paine, Design Coordinator,  
Citizens' Stamp Advisory Committee

Postal Service Manager: Jack Williams,

Program Manager for Philatelic Design

Engravers: Thomas Hipschen (vignettes and  
inscriptions), Michael J. Ryan (denominations),

Bureau of Engraving and Printing (BEP)

Printing Process: Offset/intaglio (D Press, BEP)

Colors: Magenta, yellow, cyan, and black (offset);  
Green, orange, and black (intaglio)

Image Area: 0.74 x 1.58 in/18.8 x 40.1 mm

Plate Numbers: Four offset / one intaglio

Cover Markings: ©U.S. Postal Service 1989

## Steamboats Stamp Booklet

The Postal Service will issue a Steamboats commemorative stamp booklet on March 3 in New Orleans, Louisiana. The dedication ceremony will be held at the Delta Queen Terminal. Postmaster General Anthony M. Frank will be the featured speaker.

The stamps, designed by Richard Schlecht, feature five of America's earliest and most innovative steamboats: the *Experiment*, *Phoenix*, *New Orleans*, *Washington*, and *Walk in the Water*.

These boats and thousands like them provided an enduring symbol for the transition from an age dominated by Eastern coastal interests to one marked by growth and westward expansion. Steamboats transformed uncharted waterways into America's first superhighways and helped impart, for the first time, a national feeling, even among settlers in the country's most distant outposts.

At one time, more than 11,000 paddlewheelers plied the Ohio and Mississippi Rivers alone. As competition for passengers became fierce, owners went to great lengths to attract them, building floating palaces and employing great chefs and even ships' orchestras.

Although railroads eventually supplanted steamboats, they remained an important mode of transport well into the 20th century, as exemplified by

the *Delta Queen*, which plied the Sacramento River until 1940. Today, from their home port of New Orleans, the *Delta Queen* and *Mississippi Queen* still carry passengers on overnight trips.

Procedures for ordering first day of issue cancellations follow.

**Customers Affixing Stamps.** The Postal Service encourages customers to purchase the Steamboats stamps and affix them to their envelopes. Covers bearing stamps receive preferential service. Customers should address envelopes on the right side at least  $\frac{3}{8}$  inch from the bottom and affix stamps approximately  $\frac{1}{4}$  inch from the top and right edges. Requests must be postmarked by April 2 and addressed: Customer-Affixed Envelopes, Steamboats Stamps, Postmaster, New Orleans, LA 70113-9991. No remittance is required.

**Postal Service Affixing Stamps.** The Postal Service will affix only single panes of five stamps. Customers may use a standard  $6\frac{3}{4}$  envelope and should leave enough space on the envelope for the stamp pane and first day cancellation. The price per cover is \$1.25 (for five stamps). The Postal Service accepts checks in the exact amount up to the limit of 50 envelopes. Customers should not send cash or postage stamps. Orders must be postmarked by April 2 and addressed: Steamboats Stamps, Postmaster, New Orleans, LA 70113-9992.

After offices deplete local stocks of the item, it is available from all philatelic centers and by mail order from the Philatelic Sales Division for approximately 1 year after the day of issue. A *Philatelic Catalog*, listing all available stamps and other philatelic items, is available here or from the Philatelic Sales Division, Washington, DC 20265-9997.



USPS Stamp Poster 89-3  
Remove after April 2



Copyright U.S. Postal Service 1989

# Steamboats Stamp Booklet

Available in paperback for \$1.50

The Steamboats Stamp Booklet is a new addition to the U.S. Postal Service's Stamp Booklet series. It features 12 postage stamps and a 12-page booklet of information about the steamboat industry. The booklet is available in paperback for \$1.50.

The Steamboats Stamp Booklet is a new addition to the U.S. Postal Service's Stamp Booklet series. It features 12 postage stamps and a 12-page booklet of information about the steamboat industry. The booklet is available in paperback for \$1.50.

The Steamboats Stamp Booklet is a new addition to the U.S. Postal Service's Stamp Booklet series. It features 12 postage stamps and a 12-page booklet of information about the steamboat industry. The booklet is available in paperback for \$1.50.

The Steamboats Stamp Booklet is a new addition to the U.S. Postal Service's Stamp Booklet series. It features 12 postage stamps and a 12-page booklet of information about the steamboat industry. The booklet is available in paperback for \$1.50.

The Steamboats Stamp Booklet is a new addition to the U.S. Postal Service's Stamp Booklet series. It features 12 postage stamps and a 12-page booklet of information about the steamboat industry. The booklet is available in paperback for \$1.50.

The Steamboats Stamp Booklet is a new addition to the U.S. Postal Service's Stamp Booklet series. It features 12 postage stamps and a 12-page booklet of information about the steamboat industry. The booklet is available in paperback for \$1.50.

After office hours, call 1-800-375-3777 for more information. The booklet is available in paperback for \$1.50.

1-800-375-3777



## MSC Consolidations/Realignment of USPS Field Structure

Effective September 24, 1988, the following management sectional centers (MSCs) combined in the *Northeast Region*. POSTAL BULLETIN 21702, 12-8-88 (page 15), erroneously stated that these changes occurred in the Eastern Region.

MSC Hackensack, NJ (076) combined with MSC Paterson, NJ (074-075).

MSC Paterson, NJ (078) combined with MSC Summit, NJ (079).

Paterson, NJ	074-076
Summit, NJ	078-079

Effective January 14, 1989, the following MSCs combined in the Southern Region.

Lawton, OK MSC (734-736, 738) consolidated with the Oklahoma City, OK Division (730-731, 737, 748).

Oklahoma City, OK	730-731, 734-738, 748
Division	

Effective January 14, 1989, the Northern Virginia MSC was established as a new division in the Eastern Region.

Northern Virginia	220-223, 226
-------------------	--------------

Effective January 14, 1989, the Roanoke, VA MSC realigned from the Charleston Division to the Richmond Division.

A complete MSC list, including the physical locations of these offices appears on pages 27 through 34.

Send or call any additions or corrections to the Operating Policies Office, Operations Support Group, 475 L'Enfant Plaza, SW., Washington, DC 20260-7010, Telephone PEN 268-2872.

—Operations Support Group, 2-2-89.

### DMM Notice

#### Sack Label Preparation

Effective with DOMESTIC MAIL MANUAL (DMM) Issue 30, 3-19-89, a number of sections are revised to standardize requirements for the preparation of sack labels and to clarify existing regulations concerning the location of the top or destination line on sack labels that must be completely visible and legible. The revised regulations also include a Postal Service recommendation that mailers print the top line so that it is no less than 1/8 inch below the top of the label after the label has been cut and is ready for use.

The changes found in DMM chapters 4, *Second-Class Mail*; 6, *Third-Class Mail*; and 7, *Fourth-Class Mail*, involve specific sections: 464.33, 667.13, 667.224, 667.3, 667.4, 667.7, 764.2, 764.3, 767.2, 767.3, 767.23, 767.33, 767.8.

—Rates and Classification Dept., 2-2-89.

## ZIP + 4 State Directory and Customer Orders

Post offices and postal units will receive two home state copies of Publication 66-##A, the 1989 *ZIP + 4 State Directory* (For Internal and Lobby Use) by early February. They should place one copy in the post office lobby in the binder that protected the 1988 copy of Publication 66.

The two copies are shipped to each postal unit in separate cartons, labeled ZIP + 4 State Directory, Jan. 1989/Pub. No. 66-##A. They bear pink address labels. The second copy is a spare for office reference.

Some state directories have more than one volume. Texas, for example, has three volumes because of the many address records in that state. Washington, DC, units receive two volumes, which include both of the neighboring Maryland and Virginia state directories.

All postal units should place the lobby copy of Pub. 66 as close as possible to Pub. 65, *National Five-Digit ZIP Code and Post Office Directory*, unless traffic patterns or other considerations suggest another suitable location. Lobby retail clerks should be able to easily direct customers with ZIP + 4 inquiries to Pub. 66.

If post offices need additional copies for lobby use, account representatives (ARs) and postmasters/unit managers may order them by completing Form 4242, *ZIP + 4 Code State Directory Order Form for Mail Order Use*, according to specific ordering instructions previously supplied to all ARs. Offices should normally display only home state ZIP + 4 directories. However, if postmasters/unit managers determine that local demand exists, they may order and display neighboring state directories.

There are 35 Pub. 66, *ZIP + 4 State Directory* (Pub. Nos. 66-01 through 66-35). One specific directory covers each state and, in some cases, neighboring states. Form 4242 includes the Pub. 66-## publication's number for each state.

The ZIP + 4 state directories are now available for purchase by customers by mail order only. Effective with the 1989 editions, the price has increased from \$9 to \$12 per state directory, for single-volume state directories and multivolume, larger state directories. Further, the Postal Service no longer offers ZIP + 4 state directories at no charge. (In previous years, to facilitate new product introduction, firms using postage meters could order a no charge copy permit imprint, or precanceled stamps or envelopes.)

Offices should supply interested customers with Form 4242, which is stocked preinserted in prepaid, addressed, courtesy reply envelopes. This available from the divisions, management sectional centers, and the materiel distribution centers. Form 4244, *ZIP + 4 Code State Directory Order Form*, is obsolete and offices should destroy them.

—Delivery Services Dept., 2-2-89.

**MISSING U.S. MONEY ORDER FORMS—DO NOT CASH**

To be posted and used by window clerks. As directed, destroy previous notices. Any interim notices should be destroyed when the numbers listed appear in the POSTAL BULLETIN. The actual serial numbers consist only of the first 10 digits on the money orders. **A. New Style.** (Listed below) Destroy PB 21709 listing. PB 21461 listing for B Old Style (Gray) remains valid. Retain C Counterfeit PB 21470 listing. **Reminder**—check for altered dollar amounts by holding money order to the light. Do not cash money orders with ZIP 99099.

301 424 3477 to 3499	346 654 0669 to 0699	363 922 5744 to 5799	380 165 1165 to 1199
302 000 0000 to	346 693 2520 to 2599	363 930 9400 to 9699	380 489 6800 to 6899
302 123 9999	347 338 4188 to 4199	363 965 7892 to 7999	380 572 1840 to 1899
321 401 5025 to 5034	347 458 7148 to 7199	364 467 6102 to 6199	381 077 3600 to 3699
321 607 1900 to 2199	347 492 6411 to 6499	364 826 1081 to 1099	381 325 4500 to 4599
322 013 7200 to 7299	347 641 3780 to 3799	365 512 9428 to 9499	381 540 9900 to 9999
322 722 7900 to 7999	347 645 0367 to 0399	365 693 4200 to 4299	381 604 2510 to 2699
323 854 0619 to 0699	347 696 3806 to 3899	365 842 7960 to 7999	381 645 9525 to 9599
323 854 0900 to 0999	348 010 8305 to 8399	365 997 7565 to 7699	381 924 0748 to 0799
325 097 0300 to 0399	348 036 3713 to 3799	366 205 2072 to 2099	383 156 6968 to 6999
325 465 7956 to 7999	348 036 4366 to 4599	366 772 6702 to 6799	383 156 7128 to 7199
325 645 2575 to 2599	348 412 9028 to 9099	366 998 7669 to 7681	383 156 7300 to 7999
325 734 5219 to 5299	348 535 1703 to 1728	367 303 6006 to 6099	383 299 2081 to 2099
325 739 7200 to 7399	348 714 5286 to 5299	367 396 9705 to 9799	383 314 3968 to 3999
325 934 0584 to 0599	348 755 7904 to 7999	367 396 9900 to 9999	383 892 1000 to 1344
326 181 8203 to 8299	349 116 6533 to 7499	367 428 8800 to 8999	383 892 1382 to 1399
326 231 8440 to 8499	349 389 9242 to 9299	367 519 6700 to 6899	385 568 2330 to 2399
326 231 8576 to 9299	349 392 8081 to 8099	368 371 3923 to 3999	385 599 7554 to 7575
326 687 6538 to 6564	349 615 0000 to 0099	368 730 7825 to 7899	385 774 2024 to 2099
328 160 3235 to 3299	349 746 2056 to 2099	368 854 6200 to 6299	387 314 5574 to 5599
328 160 3304 to 3399	349 910 0000 to 0399	368 978 0561 to 0599	389 696 2400 to 2799
328 189 6539 to 6578	350 017 1652 to 2199	369 345 0188 to 0199	390 001 3182 to 3199
328 229 6407 to 6499	350 251 5100 to 5199	369 674 8141 to 8199	390 001 3500 to 3699
328 275 3170 to 3299	350 366 1104 to 1119	369 718 3783 to 3799	390 545 5974 to 5999
328 423 3448 to 3468	350 366 1145 to 1166	370 193 8257 to 8299	391 104 6146 to 6199
328 432 7367 to 7499	350 518 7350 to 7374	371 241 3118 to 3199	391 783 3020 to 3599
328 435 1989 to 1999	351 110 4900 to 4999	371 630 0100 to 0199	391 792 6100 to 6199
328 543 6745 to 6799	351 113 4615 to 4699	372 308 4180 to 4199	392 854 8500 to 8899
328 543 7400 to 7599	351 113 4800 to 4999	372 311 5400 to 5499	393 584 7566 to 7699
328 817 7879 to 7899	360 003 2454 to 2499	372 360 8303 to 8399	393 650 0074 to 0099
329 165 9000 to 9999	360 037 4500 to 4549	372 407 1025 to 1099	394 126 6907 to 6999
329 170 5151 to 5199	360 038 0502 to 0599	373 390 2301 to 2399	394 822 3243 to 3278
329 825 3306 to 3899	360 112 8583 to 8599	373 390 2518 to 2599	394 990 1810 to 1899
330 053 4777 to 4789	360 134 2600 to 2699	373 390 2604 to 2699	395 343 3264 to 3299
330 360 0989 to 0999	360 135 5611 to 5699	373 463 0902 to 0999	395 396 9649 to 9799
330 402 2100 to 2199	360 135 8159 to 8199	374 022 8105 to 8199	395 970 3240 to 3299
330 726 8851 to 8891	360 172 1404 to 1499	374 692 8858 to 8899	397 622 4054 to 4099
330 982 3100 to 3199	360 257 2100 to 2199	374 795 2118 to 2199	397 819 8902 to 8999
331 201 5539 to 5599	360 282 4600 to 4699	375 169 4400 to 4599	398 149 7200 to 7699
331 468 0700 to 0799	360 403 8453 to 8499	375 637 9137 to 9199	399 156 7119 to 7199
331 631 5705 to 6099	360 418 0700 to 0799	375 637 9365 to 9999	399 296 9909 to 9999
331 643 7553 to 7599	360 419 6700 to 6799	375 744 7930 to 7999	399 792 7775 to 7799
331 890 8100 to 9099	360 535 5648 to 5657	375 829 3400 to 3499	399 792 8300 to 8399
331 960 6019 to 6199	360 762 9368 to 9399	375 851 9100 to 9199	400 427 1051 to 1999
331 966 6733 to 6799	361 142 2817 to 2899	376 850 0813 to 0899	404 003 0300 to 0399
340 044 0851 to 0861	361 142 2817 to 2899	376 855 6764 to 6999	404 071 4268 to 4299
340 283 0024 to 0100	361 440 9240 to 9299	376 903 0721 to 0738	405 325 0188 to 0198
340 367 3100 to 3199	361 754 9300 to 9499	376 906 3206 to 3299	407 515 3343 to 3399
340 624 5530 to 5549	361 782 4204 to 4299	377 113 7461 to 7499	407 526 4000 to 4299
340 761 4101 to 4299	361 974 6811 to 6999	377 224 2300 to 2599	700 065 2570 to 2599
341 168 4000 to 4999	362 246 6800 to 6899	377 955 4285 to 4399	802 678 2605 to 2699
341 818 4173 to 4199	362 299 8900 to 8999	378 029 9347 to 9399	803 605 2840 to 2899
341 999 8038 to 8052	362 861 3064 to 3099	378 085 3679 to 3699	803 605 6300 to 6499
342 068 7623 to 7699	363 130 1575 to 1599	378 210 9090 to 9099	805 323 5006 to 5024
342 442 5051 to 5093	363 130 4500 to 4599	378 351 1063 to 1099	805 466 7255 to 7299
342 442 6402 to 6499	363 374 9010 to 9099	378 630 9489 to 9599	806 015 3885 to 3899
342 511 0441 to 0457	363 444 9333 to 9399	379 128 9584 to 9599	806 087 1100 to 1499
344 091 7382 to 7499	363 560 5050 to 5099	379 509 2600 to 2699	806 268 9275 to 9299
344 130 6283 to 6299	363 851 4259 to 4299	379 679 8060 to 8099	990 117 5600 to 5999
344 175 9580 to 9589	363 853 7582 to 7799	379 843 5100 to 5199	
344 850 1600 to 1699	363 861 7600 to 7899	380 093 9600 to 9611	
	363 904 4540 to 4999		

## MANAGEMENT SECTIONAL CENTERS

The following list includes independent post offices (POs) and airport facilities (APFs) (marked \*)—which are not management sectional centers (MSCs)—reporting directly to the divisions.

Total Divisions: 75. Total MSCs: 130.

**NORTHEAST REGION**

**ALBANY DIVISION**

30 Old Karner Road  
Albany, NY 12288-9998 .....120-123, 128-129  
PEN: 8-562-2201  
Comm: 8-(518) 452-2201

115 Henry Street  
Binghamton, NY 13902-9998 .....137-139  
PEN: 8-882-2142  
Comm: 8-(607) 773-2642

5640 E. Taft Road  
Syracuse, NY 13220-9998 .....130-132, 136  
PEN: 8-952-3501  
Comm: 8-(315) 470-3501

100 Pitcher Street  
Utica, NY 13504-9998 .....133-135  
PEN: 8-950-9301  
Comm: 8-(315) 797-9420

**BOSTON DIVISION**

25 Dorchester Avenue  
Boston, MA 02205-9998 .....020-022  
PEN: 8-(617) 654-5007  
Comm: 8-(617) 654-5007

**Middlesex-Essex MSC**

462 Washington Street  
Woburn, MA 01888-9998 .....018-019, 055  
PEN: 8-834-9762

**BROOKLYN DIVISION**

271 Cadman Plaza East  
Brooklyn, NY 11201-9998 .....103, 111-112  
PEN: 8-652-3610  
Comm: 8-(718) 834-3610

**BUFFALO DIVISION**

1200 William Street  
Buffalo, NY 14240-9998 .....140-143, 147  
PEN: 8-437-2400  
Comm: 8-(716) 846-2400

1335 Jefferson Road

Rochester, NY 14692-9998 .....144-146, 148-149  
PEN: 8-963-5800  
Comm: 8-(716) 263-5800

**CARIBBEAN DIVISION**

GPO Box 3367  
San Juan, PR 00936-9998 .....006-009  
Comm: 8-(809) 766-5624

**HARTFORD DIVISION**

141 Weston Street  
Hartford, CT 06101-9998 .....060-062, 067  
PEN: 8-646-6050  
Comm: 8-(203) 524-6050

50 Brewery Street  
New Haven, CT 06511-9998 .....063-066  
PEN: 8-643-7000

**LONG ISLAND DIVISION**

U.S. Postal Service  
Hicksville, NY 11805-9998 .....005, 115, 117-119  
PEN: 666-2710  
Comm: 8-(516) 755-2710

**MANCHESTER DIVISION**

955 Goffs Falls Road  
Manchester, NH 03103-9998 .....030-034, 036-037  
PEN: 8-841-4000  
Comm: 8-(603) 644-4000

202 Harlow Street

Bangor, ME 04401-9998 .....044, 046-047, 049  
PEN: 8-835-2011

125 Forest Avenue

Portland, ME 04101-9998 .....040-043, 045, 048  
PEN: 8-830-8529

80 Daniel Street

Portsmouth, NH 03801-9998 .....035, 038-039  
PEN: 8-(603) 431-1300

**NEWARK DIVISION**

2 Federal Square  
Newark, NJ 07102-9998 .....070-073  
PEN: 8-340-5586  
Comm: 8-(201) 596-5586

**NEW BRUNSWICK DIVISION**

U.S. Postal Service  
New Brunswick, NJ 08901-9998 .....088-089  
PEN: 8-636-3264  
Comm: 8-(201) 819-3264

194 Ward Street

Peterston, NJ 07510-9998 .....074-076  
PEN: 8-691-4570

171 Broad Street

Red Bank, NJ 07701-9998 .....077  
Comm: 8-(201) 741-9200

61 Maple Street

Summit, NJ 07701-9998 .....078-079  
Comm: 8-(201) 277-1737

680 U.S. Highway 130

Trenton, NJ 08650-9998 .....085-087  
PEN: 8-433-3003  
Comm: 8-(609) 581-3003

**NEW YORK DIVISION**

James A. Farley Bldg., Rm. 3016  
New York, NY 10199-9998 .....090-098, 100-102, 104  
PEN: 8-330-3600  
Comm: 8-(212) 330-3600

## MANAGEMENT SECTIONAL CENTERS—Continued

## PROVIDENCE DIVISION

24 Cortiss Street  
 Providence, RI 02904-9998 .....027-029  
 PEN: 8-838-6951  
 Comm: 8-(401) 276-6951

120 Commercial Street  
 Braintree, MA 02403-9998 .....023-026  
 PEN: 8-844-1856

4 East Central Street  
 Worcester, MA 01613-9998 .....014-017  
 PEN: 8-836-3600

## QUEENS DIVISION

41-65 Main Street  
 Flushing, NY 11351-9998 .....110, 113-114, 116  
 PEN: 8-662-5155  
 Comm: 8-(718) 321-5155

Kennedy AMF\*  
 AMF Bldg. 250  
 Kennedy Airport, NY 11430-9998 .....003  
 PEN: 8-665-9600

## SPRINGFIELD DIVISION

1883 Main Street  
 Springfield, MA 01101-9998 .....010-013  
 PEN: 8-833-6528  
 Comm: 8-(413) 731-0528

11 Elmwood Avenue  
 Burlington, VT 05401-9998 .....052, 054, 056-057  
 PEN: 8-870-1115

Sykes Avenue  
 White River Junction, VT 05001-9998 .....050-051, 053, 058-059  
 PEN: 8-832-3246

## WESTCHESTER DIVISION

230 East Sandford Boulevard  
 Mt. Vernon, NY 10551-9998 .....004, 105-109  
 PEN: 8-674-7196  
 Comm: 8-(914) 964-7196

55 Mansion Street  
 Poughkeepsie, NY 12601-9998 .....124-127  
 PEN: 8-883-5426  
 Comm: 8-(914) 452-3421

427 West Avenue  
 Stamford, CT 06910-9998 .....068-069  
 Comm: 8-(203) 326-2201

## EASTERN REGION

## BALTIMORE DIVISION

900 E. Fayette Street  
 Baltimore, MD 21233-9998 .....210-212, 214-215, 217, 219  
 PEN: 8-956-4260  
 Comm: 8-(301) 347-4260

147 Quigley Boulevard  
 Wilmington, DE 19850-9998 .....197-199, 216, 218  
 PEN: 8-487-8227  
 Comm: 8-(302) 323-2227

## CHARLESTON DIVISION

1002 Lee Street, East  
 Charleston, WV 25301-9998 .....250-253, 258-259, 266  
 PEN: 8-924-0601  
 Comm: 8-(304) 357-0601

301 North Street  
 Bluefield, WV 24701-9998 .....246-249, 255-257  
 PEN: 8-544-1241  
 Comm: 8-(304) 327-8678

500 W. Pike Street  
 Clarksburg, WV 26301-9998 .....254, 261-265, 267-268  
 PEN: 8-552-7700  
 Comm: 8-(304) 623-7700

## CINCINNATI DIVISION

1591 Dalton Street  
 Cincinnati, OH 45234-9998 .....410, 450-452, 459, 470  
 PEN: 8-684-5400  
 Comm: 8-(513) 684-5400

1111 E. Fifth Street  
 Dayton, OH 45401-9998 .....453-455, 458  
 PEN: 8-774-1235  
 Comm: 8-(513) 227-1235

## CLEVELAND DIVISION

2400 Orange Avenue  
 Cleveland, OH 44101-9998 .....440-441  
 PEN: 8-292-4573  
 Comm: 8-(216) 443-4573

675 Wolf Ledges Parkway  
 Akron, OH 44309-9998 .....442-443, 446-447  
 PEN: 8-293-0404  
 Comm: 8-(216) 379-0404

99 South Walnut Street  
 Youngstown, OH 44501-9998 .....439, 444-445  
 PEN: 8-291-6820  
 Comm: 8-(216) 744-6820

## COLUMBIA DIVISION

1601 Assembly Street  
 Columbia, SC 29201-9998 .....290-292  
 PEN: 8-677-4600  
 Comm: 8-(803) 733-4600

4290 Daley Avenue  
 Charleston, SC 29423-9998 .....294-295  
 PEN: 8-668-4368

600 W. Washington Street  
 Greenville, SC 29602-9998 .....293, 296  
 PEN: 8-230-8302

301 Green Street  
 Fayetteville, NC 28302-9998 .....283-285  
 PEN: 8-679-2312

## COLUMBUS DIVISION

850 Twin Rivers Drive  
 Columbus, OH 43216-9998 .....430-433, 448-449, 456  
 PEN: 8-943-4266  
 Comm: 8-(614) 469-4266

**MANAGEMENT SECTIONAL CENTERS—Continued**

435 S. St. Clair Street  
**Toledo, OH 43601-9998** .....434-436  
 PEN: 8-979-1802

900 McIntire Avenue  
**Zanesville, OH 43701-9998** .....437-438, 457  
 PEN: 8-771-2800

**GREENSBORO DIVISION**  
 900 East Market Street  
**Greensboro, NC 27420-9998** .....270-274, 286  
 PEN: 8-629-1201  
 Comm: 8-(919) 271-5598

2901 So. I-85  
**Charlotte, NC 28228-9998** .....280-282, 287-289, 297  
 PEN: 8-672-4444

310 New Bern Avenue  
**Raleigh, NC 27611-9998** .....275-279  
 PEN: 8-671-3600

**HARRISBURG DIVISION**  
 813 Market Street  
**Harrisburg, PA 17105-9998** .....169-172, 177-178  
 PEN: 8-589-2300  
 Comm: 8-(717) 257-2300

1400 Harrisburg Pike  
**Lancaster, PA 17604-9998** .....173-176, 179, 195-196  
 PEN: 8-484-6900  
 Comm: 8-(717) 396-6900

1000 Postal Road  
**Lehigh Valley, PA 18001-9998** .....180-188  
 PEN: 8-346-3209  
 Comm: 8-(215) 266-3209

**LOUISVILLE DIVISION**  
 1420 Gardiner Lane  
**Louisville, KY 40231-9998** .....400-402, 471  
 PEN: 8-352-1814  
 Comm: 8-(502) 454-1814

1140 Carter Avenue  
**Ashland, KY 41101-9998** .....411-412, 415-418  
 PEN: 8-921-2100  
 Comm: 8-(606) 327-2100

311 E. 11th Street  
**Bowling Green, KY 42101-9998** .....421-422, 427  
 PEN: 8-351-4202

301 East Center Street  
**Corbin, KY 40701-9998** .....407-409, 425-426  
 PEN: 8-622-3966

1088 Nandino Boulevard  
**Lexington, KY 40511-9998** .....403-406, 413-414  
 PEN: 8-355-6784

800 Sycamore Street  
**Evansville, IN 47708-9998** .....420, 423-424, 476-477  
 PEN: 8-354-3401

**NORTHERN VIRGINIA DIVISION**  
 8409 Lee Highway  
**Merrifield, VA 22081-9998** .....220-223, 226  
 PEN: 8-393-6600  
 Comm: 8-(703) 698-6600

**PHILADELPHIA DIVISION**  
 2970 Market Street  
**Philadelphia, PA 19104-9998** .....190-192, 213  
 PEN: 8-680-8800  
 Comm: 8-(215) 895-8800

**PITTSBURGH DIVISION**  
 1001 California Avenue  
**Pittsburgh, PA 15290-9998** .....150-154, 156, 260  
 PEN: 8-726-7771  
 Comm: 8-(412) 359-7771

2108 East 38th Street  
**Erie, PA 16515-9998** .....158, 160-165, 167  
 PEN: 8-759-7300  
 Comm: 8-(814) 898-7300

111 Franklin Street  
**Johnstown, PA 15901-9998** .....155, 157, 159, 166, 168  
 PEN: 8-723-4952  
 Comm: 8-(717) 257-2300

**RICHMOND DIVISION**  
 1801 Brook Road  
**Richmond, VA 23232-9998** .....224-225, 230-232, 238-239  
 PEN: 8-982-6201  
 Comm: 8-(804) 775-6201

1155 Seminole Trail  
**Charlottesville, VA 22906-9998** .....227-229, 244  
 PEN: 8-551-7610  
 Comm: 8-(804) 978-7610

600 Church Street  
**Norfolk, VA 23501-9998** .....233-237  
 PEN: 8-931-2101  
 Comm: 8-(804) 629-2231

419 Rutherford Avenue, NE  
**Roanoke, VA 24022-9998** .....240-243, 245  
 PEN: 8-937-8750  
 Comm: 8-(703) 985-8750

**SOUTH JERSEY DIVISION**  
 421 Benigo Boulevard  
**Bellmawr, NJ 08031-9998** .....080-084  
 PEN: 8-488-4000  
 Comm: 8-(609) 933-4000

1000 W. Valley Road  
**Southeastern, PA 19399-9998** .....189, 193-194  
 PEN: 8-483-6401  
 Comm: 8-(215) 964-6401

**SOUTHERN MARYLAND DIVISION**  
 9210 Edgeworth Drive  
**Capitol Heights, MD 20790-9998** .....206-209  
 PEN: 8-763-7600  
 Comm: 8-(301) 499-7600

900 Brentwood Road, NE\*  
**Washington, DC 20066-9998** .....200, 202-205  
 PEN: 8-523-1200  
 Comm: 8-(202) 636-1200

**SOUTHERN REGION**

**ATLANTA DIVISION**  
 3900 Crown Road, SW  
**Atlanta, GA 30304-9998** .....300-303, 305-306, 311, 399  
 PEN: 8-236-7300  
 Comm: 8-(404) 724-7300

## MANAGEMENT SECTIONAL CENTERS—Continued

## BIRMINGHAM DIVISION

351 N. 24th Street  
Birmingham, AL 35203-9998 .....350-352, 354-355, 362  
PEN: 8-229-0201  
Comm: 8-(205) 521-0201

3408 Wall Triana Highway  
Huntsville, AL 35813-9998 .....356-359  
PEN: 8-873-0211  
Comm: 8-(205) 772-0211

2256 E. South Boulevard  
Montgomery, AL 36119-9998 .....360-361, 367-368  
PEN: 8-534-7570

451 College Street  
Macon, GA 31213-9998 .....310, 312, 316-319  
PEN: 8-237-8401

## DALLAS DIVISION

401 Dallas/Ft. Worth Turnpike  
Dallas, TX 75260-9998 .....750-754  
PEN: 8-734-4445  
Comm: 8-(214) 760-4445

4600 Mark IV Parkway  
Fort Worth, TX 76161-9998 .....760-764  
PEN: 8-335-1000

## HOUSTON DIVISION

401 Franklin Avenue  
Houston, TX 77201-9998 .....770-778  
PEN: 8-495-3000  
Comm: 8-(713) 226-3000

## JACKSON DIVISION

401 E. South Street  
Jackson, MS 39201-5210 .....369, 390-393  
PEN: 8-490-5754  
Comm: 8-(601) 968-5754

1715 Odom Street  
Alexandria, LA 71301-9998 .....713-714  
PEN: 8-497-4601

750 Florida Street  
Baton Rouge, LA 70821-9998 .....705-708  
PEN: 8-681-0393

General Mail Facility  
2400 Texas Avenue  
Shreveport, LA 71102-9998 .....710-712  
PEN: 8-493-2200

## JACKSONVILLE DIVISION

1100 Kings Road  
Jacksonville, FL 32203-9998 .....320-323, 326  
PEN: 8-964-2771  
Comm: 8-(904) 359-2771

2 North Fahm Street  
Savannah, GA 31401-9998 .....298-299, 304, 308-309, 313-315  
PEN: 8-248-4654

## LITTLE ROCK DIVISION

4700 East McCain Boulevard  
Little Rock, AR 72231-9998 .....716-722  
PEN: 8-642-6600  
Comm: 8-(501) 945-6600

3318 S. 74th  
Fort Smith, AR 72917-9998 .....726-729  
PEN: 8-740-6410  
Comm: 8-(501) 484-6410

310 East Street  
Jonesboro, AR 72401-9998 .....724-725  
PEN: 8-277-4700

2100 W. Martin Luther King Blvd.  
Tyler, TX 75702-9998 .....755-759  
PEN: 8-748-2491

## MEMPHIS DIVISION

555 S. Third Street  
Memphis, TN 38101-9998 .....375, 380-383, 723  
PEN: 8-222-2315  
Comm: 8-(901) 521-2315

515 South Thomas Street  
Tupelo, MS 38801-9998 .....386-389, 397  
PEN: 8-224-4413

## MIAMI DIVISION

2200 NW 72nd Avenue  
Miami, FL 33152-9998 .....330-333, 340  
PEN: 8-350-0477  
Comm: 8-(305) 591-0477

3200 Summit Boulevard  
West Palm Beach, FL 33406-9998 .....334, 339, 349  
PEN: 8-824-2001

## NASHVILLE DIVISION

525 Royal Parkway  
Nashville, TN 37229-9998 .....370-372, 384-385  
PEN: 8-852-9252  
Comm: 8-(615) 885-9252

6050 Shallowford Road  
Chattanooga, TN 37401-9998 .....307, 373-374  
PEN: 8-854-8200

1237 East Weisgarber Road  
Knoxville, TN 37950-9998 .....376-379  
PEN: 8-853-4544

## NEW ORLEANS DIVISION

701 Loyola Avenue  
New Orleans, LA 70113-9998 .....700-701, 703-704  
PEN: 8-682-1022  
Comm: 8-(504) 589-1022

12220 Highway 49 North  
Gulfport, MS 39503-9998 .....394-396  
PEN: 8-499-4131

250 St. Joseph Street  
Mobile, AL 36601-9998 .....363-366  
PEN: 8-537-5901

1400 W. Jordan Street  
Pensacola, FL 32501-9998 .....324-325  
PEN: 8-947-9102

## OKLAHOMA CITY DIVISION

320 SW Fifth Street  
Oklahoma City, OK 73125-9998 .....730-731, 734-738, 748  
PEN: 8-736-6261  
Comm: 8-(405) 278-6261

**MANAGEMENT SECTIONAL CENTERS—Continued**

333 West Fourth Street  
**Tulsa, OK 74101-9998** .....740-741, 743-747, 749  
 PEN: 8-745-6868

1515 Avenue G  
**Lubbock, TX 79402-9998** .....739, 790-794  
 PEN: 8-738-7801

**SAN ANTONIO DIVISION**  
 10410 Perrin-Bietel Road  
**San Antonio, TX 78284-9998** .....780-782, 788  
 PEN: 8-730-8580  
 Comm: 8-(512) 657-8580

8225 Cross Park Drive  
**Austin, TX 78710-9998** .....733, 786-787, 789  
 PEN: 8-770-1576

809 Nueces Bay Boulevard  
**Corpus Christi, TX 78408-9998** .....779, 783-785  
 PEN: 8-574-2201

430 West State Hwy. 6  
**Waco, TX 76702-9998** .....765-769, 795-796  
 PEN: 8-768-6501

**TAMPA DIVISION**  
 5201 Spruce Street  
**Tampa, FL 33630-9998** .....335-338, 342, 346  
 PEN: 8-826-0601  
 Comm: 8-(813) 877-0601

10401 Tradeport Drive  
**Orlando, FL 32862-9998** .....327-329  
 PEN: 8-820-6203

**CENTRAL REGION**

**CHICAGO DIVISION**  
 Main Post Office  
 433 W. Van Buren Street  
**Chicago, IL 60607-9998** .....606  
 PEN: 8-765-3000  
 Comm: 8-(312) 765-3000

**AMF O'HARE\***  
 O'Hare Airport, IL 60666-9998 .....Only  
 PEN: 8-366-2175

**DENVER DIVISION**  
 1823 Stout Street, Rm. 413  
**Denver, CO 80202-9998** .....800-807  
 PEN: 8-297-6169  
 Comm: 8-(303) 297-6169

241 N. 4th Street  
**Grand Junction, CO 81501-9998** .....813-816  
 PEN: 8-322-3411  
 Comm: 8-(303) 244-3411

2110 Capitol Avenue  
**Cheyenne, WY 82001-9998** .....820-831  
 PEN: 8-328-6501  
 Comm: 8-(307) 772-6501

**DES MOINES DIVISION**  
 1165 Second Avenue  
**Des Moines, IA 50318-9998** .....500-503, 506-508  
 PEN: 8-861-7650  
 Comm: 8-(515) 283-7650

615 Sixth Avenue, SE  
**Cedar Rapids, IA 52401-9998** .....520-528, 612  
 PEN: 8-863-2940

214 Jackson Street  
**Sioux City, IA 51101-9998** .....504-505, 510-514  
 PEN: 8-866-6401

**DETROIT DIVISION**  
 1401 West Fort Street  
**Detroit, MI 48233-9998** .....481-482  
 PEN: 8-226-8605  
 Comm: 8-(313) 226-8605

200 W. 2nd Street  
**Royal Oak, MI 48067-9998** .....480, 483  
 PEN: 8-371-6512

**GRAND RAPIDS DIVISION**  
 225 Michigan Street, NW  
**Grand Rapids, MI 49599-9998** .....493-496  
 PEN: 8-973-1562  
 Comm: 8-(616) 776-1562

250 E. Boulevard Drive  
**Flint, MI 48502-9998** .....484-485  
 PEN: 8-974-1506

1121 Miller Road  
**Kalamazoo, MI 49001-9998** .....490-491  
 PEN: 8-374-7200

4800 Collins Road  
**Lansing, MI 48924-9998** .....488-489, 492  
 PEN: 8-376-8872

1233 S. Washington Street  
**Saginaw, MI 48605-9998** .....486-487, 497  
 PEN: 8-975-5709

**INDIANAPOLIS DIVISION**  
 Post Office Box 9998  
**Indianapolis, IN 46206-9998** .....460-462, 472  
 PEN: 8-333-6451  
 Comm: 8-(317) 464-6451

1501 S. Clinton Street  
**Fort Wayne, IN 46802-9998** .....467-468, 473  
 PEN: 8-331-7399

1499 Martin Luther King Drive  
**Gary, IN 46401-9998** .....463-464  
 PEN: 8-888-8000

3450 State Road 26 East  
**Lafayette, IN 47901-9998** .....469, 479  
 PEN: 8-383-9202

424 S. Michigan Street  
**South Bend, IN 46624-9998** .....465-466  
 PEN: 8-338-8450

## MANAGEMENT SECTIONAL CENTERS—Continued

30 North Seventh Street Terre Haute, IN 47808-9998 .....474-475, 478 PEN: 8-339-9312	300 East Third Street North Platte, NE 69101-9998 .....690-693 PEN: 8-581-3144
KANSAS CITY DIVISION 315 West Pershing Road Kansas City, MO 64108-9998 .....640-641, 644-647, 649 PEN: 8-755-9103 Comm: 8-(816) 374-9103	500 East Boulevard Rapid City, SD 57701-9998 .....575-577 PEN: 8-781-6724
511 E. Walnut Street Columbia, MO 65201-9998 .....623, 634, 635, 650-653 PEN: 8-276-7201	320 S. Second Avenue Sioux Falls, SD 57101-9998 .....570-574 PEN: 8-782-4261
500 West Chestnut Expressway Springfield, MO 65801-9998 .....636-639, 648, 654-658 PEN: 8-754-0101	ST. LOUIS DIVISION 1720 Market Street St. Louis, MO 63155-9998 .....620, 622, 630-631, 633 PEN: 8-436-4114 Comm: 8-(314) 436-4114
MILWAUKEE DIVISION 345 West St. Paul Avenue Milwaukee, WI 53203-9998 .....530-532, 534 PEN: 8-362-2301 Comm: 8-(414) 291-2301	ST. PAUL DIVISION 180 East Kellogg Boulevard St. Paul, MN 55101-9998 .....540, 550-551, 559 PEN: 8-788-3300 Comm: 8-(612) 293-3300
300 Packerland Drive Green Bay, WI 54303-9998 .....498-499, 541-543 Comm: 8-(414) 498-3900	2800 W. Michigan Street Duluth, MN 55806-9998 .....556-558, 563-564, 566 PEN: 8-783-2500
3902 Milwaukee Street Madison, WI 53714-9998 .....535, 537-539 PEN: 8-325-1217	126 N. Barstow Street Eau Claire, WI 54701-9998 .....546-548 PEN: 8-784-6460
1025 W. 20th Avenue Oshkosh, WI 54901-9998 .....544-545, 549 PEN: 8-367-0233	SOUTH SUBURBAN DIVISION 6801 West 73rd Street South Suburban, IL 60499-9998 .....604-605 PEN: 8-361-5431 Comm: 8-(312) 563-5431
MINNEAPOLIS DIVISION First and Marquette Minneapolis, MN 55401-9998 .....553-554, 560-562 PEN: 8-626-4400 Comm: 8-(612) 349-4400	1301 E. Main Street Carbondale, IL 62901-9998 .....624, 628-629 PEN: 8-959-3802
220 East Rosser Avenue Bismarck, ND 58501-9998 .....583-588 PEN: 8-785-6501	600 N. Neil Street Champaign, IL 61820-9998 .....609, 618-619 PEN: 8-958-5180
657 2nd Avenue N. Fargo, ND 58102-9998 .....580-582, 565, 567 PEN: 8-786-6110	95 State Street Peoria, IL 61601-9998 .....614-617 PEN: 8-360-8821
NORTH SUBURBAN DIVISION 8999 West Palmer Street North Suburban, IL 60199-9998 .....600-603 PEN: 8-326-5010 Comm: 8-(312) 451-5001	2105 E. Cook Street Springfield, IL 62703-9998 .....625-627 PEN: 8-955-7211
5225 Harrison Avenue Rockford, IL 61125-9998 .....610-611, 613 PEN: 8-363-4801	WICHITA DIVISION 7117 West Harry Street Wichita, KS 67276-9998 .....670-673, 675, 678-679 PEN: 8-732-4649 Comm: 8-(316) 946-4649
OMAHA DIVISION 1124 Pacific Street Omaha, NE 68108-9998 .....515-516, 680-681, 686-687 PEN: 8-864-5304 Comm: 8-(402) 978-4604	4900 Speaker Road Kansas City, KS 66106-9998 .....660-662, 667 PEN: 8-758-2504 Comm: 8-(913) 573-2504
700 R Street Lincoln, NE 68501-9998 .....683-685, 688-689 PEN: 8-541-1600	424 S. Kansas Avenue Topeka, KS 66603-9998 .....664-666, 668-669, 674, 676-677 PEN: 8-752-9152



**MANAGEMENT SECTIONAL CENTERS—Continued**

210 E. Pikes Peak Avenue  
**Colorado Springs, CO 80901-9998** .....808-812  
 PEN: 8-323-2323  
 Comm: 8-(303) 570-5323

**WESTERN REGION**

**ANCHORAGE DIVISION**  
 3720 Barrow Street  
**Anchorage, AK 99599-9998** .....995-996  
 Comm: 8-(907) 261-5400

5400 Mail Trail  
**Fairbanks, AK 99709-9998** .....997  
 Comm: 8-(907) 474-0722

709 W. Ninth Street  
**Juneau, AK 99801-9998** .....998-999  
 Comm: 8-(907) 586-7138

**HONOLULU DIVISION**  
 P.O. Box 30888  
 3600 Aolele Street  
**Honolulu, HI 96820-0888** .....967-969  
 PEN: 8-550-3700  
 Comm: 8-(808) 423-3700

**LONG BEACH DIVISION**  
 2300 Redondo Avenue  
**Long Beach, CA 90809-9998** .....906-908  
 PEN: 8-794-2200  
 Comm: 8-(213) 494-2200

**Inglewood MSC**  
 13031 W. Jefferson Boulevard  
**Marina Del Rey, CA 90311-9998** .....902-905  
 PEN: 8-962-1100  
 Comm: 8-(213) 301-1100

**LOS ANGELES DIVISION**  
 900 East Gage Avenue  
**Los Angeles, CA 90052-9998** .....900-901  
 PEN: 8-686-1200  
 Comm: 8-(213) 586-1200

**OAKLAND DIVISION**  
 1675 7th Street  
**Oakland, CA 94615-9998** .....945-948  
 PEN: 8-467-8222  
 Comm: 8-(415) 874-8222

**North Bay MSC**  
 1150 No. McDowell Blvd.  
**Petaluma, CA 94999-9998** .....949, 954  
 PEN: 8-452-5300  
 Comm: 8-(707) 778-5300

**PHOENIX DIVISION**  
 4949 E. Van Buren Street  
**Phoenix, AZ 85026-9998** .....850, 852-853  
 PEN: 8-261-3109  
 Comm: 8-(602) 225-3109

2400 N. Postal Blvd.  
**Flagstaff, AZ 86004-9998** .....859-860, 863-864  
 PEN: 8-766-2450  
 Comm: 8-(602) 527-2450

1001 East Sunset Road  
**Las Vegas, NV 89199-9998** .....889-891  
 PEN: 8-598-9200  
 Comm: 8-(702) 361-9200

**PORTLAND DIVISION**  
 715 NW Hoyt Street  
**Portland, OR 97208-9998** .....970-972, 978, 986  
 PEN: 8-422-2500  
 Comm: 8-(503) 294-2500

520 Willamette Street  
**Eugene, OR 97401-9998** .....974-976  
 PEN: 8-420-3601  
 Comm: 8-(503) 341-3601

1050 25th Street, SE  
**Salem, OR 97301-9998** .....973, 977  
 PEN: 8-424-4710  
 Comm: 8-(503) 370-4710

**SACRAMENTO DIVISION**  
 2000 Royal Oaks Drive  
**Sacramento, CA 95813-9998** .....942, 956-958  
 PEN: 8-448-4301  
 Comm: 8-(916) 921-4301

407 C Street  
**Marysville, CA 95901-9998** .....959  
 PEN: 8-461-2336  
 Comm: 8-(916) 742-2336

1647 Yuba Street  
**Redding, CA 96001-9998** .....955, 960  
 PEN: 8-450-5500  
 Comm: 8-(916) 246-5500

2000 Vassar Street  
**Reno, NV 89510-9998** .....894-895, 897, 961  
 PEN: 8-474-1613  
 Comm: 8-(702) 788-0613

3131 Arch Airport Road  
**Stockton, CA 95213-9998** .....952-953  
 PEN: 8-473-6333  
 Comm: 8-(209) 983-6333

**SALT LAKE CITY DIVISION**  
 1760 W. 2100 South  
**Salt Lake City, UT 84199-9998** .....840-847, 893, 898  
 PEN: 8-586-2947  
 Comm: 8-(801) 974-2947

841 South 26th Street  
**Billings, MT 59101-9998** .....590-595  
 PEN: 8-584-5701  
 Comm: 8-(406) 657-5701

1100 W. Kent Street  
**Missoula, MT 59806-9998** .....596-599  
 PEN: 8-585-2210  
 Comm: 8-(406) 329-3620

770 South 13th Street  
**Boise, ID 83708-9998** .....833, 836-837, 979  
 PEN: 8-554-4211  
 Comm: 8-(208) 383-4250

**MANAGEMENT SECTIONAL CENTERS—Continued**

730 E. Clark Street Pocatello, ID 83201-9998 .....832, 834 PEN: 8-578-0800 Comm: 8-(208) 233-0800	SEATTLE DIVISION 415 First Avenue, North Seattle, WA 98109-9998 .....980-982, 987 PEN: 8-442-6299 Comm: 8-(206) 442-6299
<b>SAN DIEGO DIVISION</b> 2535 Midway Drive San Diego, CA 92199-9998 .....920-921 PEN: 8-890-3201 Comm: 8-(619) 221-3201	703 E. Trent Avenue Spokane, WA 99202-9998 .....835, 838, 990-994 PEN: 8-446-0333 Comm: 8-(509) 459-0333
General Mail Facility San Bernardino, CA 92403-9998 .....922-925 PEN: 8-791-4303 Comm: 8-(714) 335-4303	4001 S. Pine Street Tacoma, WA 98413-9998 .....983-985, 988-989 PEN: 8-390-6001 Comm: 8-(206) 756-6001
<b>SAN FRANCISCO DIVISION</b> 1300 Evans Avenue San Francisco, CA 94188-9998 ....940-941, 943-944, 962-966 PEN: 8-462-5000 Comm: 8-(415) 550-5002	<b>TUCSON DIVISION</b> 1501 S. Cherrybell Avenue Tucson, AZ 85726-9998 .....855-857, 879-880 PEN: 8-762-5100 Comm: 8-(602) 620-5100
<b>SAN JOSE DIVISION</b> 1750 Lundy Avenue San Jose, CA 95101-9998 .....939, 950-951 PEN: 8-463-6750 Comm: 8-(408) 437-6750	1135 Broadway, NE Albuquerque, NM 87101-9998 .....865, 870-875, 877-878, 881-884 PEN: 8-571-3801 Comm: 8-(505) 848-3801
3400 Pegasus Drive Bakersfield, CA 93380-9998 .....932-933 PEN: 8-961-6102 Comm: 8-(805) 392-6102	5300 E. Paisano Drive El Paso, TX 79910-9998 .....797-799, 885 PEN: 8-573-7504 Comm: 8-(915) 775-7504
1900 E Street Fresno, CA 93706-9998 .....936-938 PEN: 8-464-7600 Comm: 8-(209) 487-7600	<b>VAN NUYS DIVISION</b> 15701 Sherman Way Van Nuys, CA 91409-9998 .....913-916, 935 PEN: 8-968-6606 Comm: 8-(818) 908-6606
<b>SANTA ANA DIVISION</b> 3101 W. Sunflower Santa Ana, CA 92799-9998 .....926-928 PEN: 8-996-6203 Comm: 8-(714) 662-6203	600 N. Lincoln Avenue Pasadena, CA 91109-9998 .....910-912 PEN: 8-797-7101 Comm: 8-(818) 304-7101
14730 Don Julian Road Alhambra, CA 91899-9998 .....917-918 PEN: 8-795-0298 Comm: 8-(818) 810-0298	836 Anacapa Street Santa Barbara, CA 93102-9998 .....930-931, 934 PEN: 8-960-2250 Comm: 8-(805) 564-2250

**Protect your back  
As you raise that sack,  
Just bend your knees,  
And you'll lift with ease.**

## Warning Notice—Unrecovered Missing Canadian Money Order Forms

(To be posted and used by window clerks. As directed, destroy previous notices. Insert any interim notices in sequence.)

The following money orders are void and should not be cashed: (1) All card type orders. (2) New Style orders 000,000,001-399,999,999. Advise holders to send them to Canada Post Office, Ottawa, Canada, K1A 0B1.

The new money order serial numbers consist of the first nine digits. The 10th digit is a check digit only. Destroy the PB 21709 article.

510,068,801 to 9,000	539,989,721 to 9,800	556,508,870 to 8,900	573,666,236 to 6,294
511,899,301 to 9,600	539,991,061 to 1,100	557,669,091 to 9,100	573,702,655 to 2,700
512,328,808 to 8,900	541,097,901 to	557,669,191 to 9,200	574,217,901 to 7,925
512,373,932 to 4,500	098,200	557,711,743 to 1,800	574,415,253 to 5,300
513,426,858 to 7,300	543,289,525 to	557,786,836 to 6,860	574,526,901 to
513,457,701 to 7,800	290,200	558,228,301 to 8,400	527,000
515,790,188 to 0,230	543,305,301 to 5,600	558,638,801 to 9,000	574,808,545 to 8,700
515,892,011 to 2,020	544,194,216 to 4,700	559,562,701 to 2,742	574,810,201 to
516,649,101 to 9,200	544,619,721 to	559,565,818 to	811,200
516,882,201 to 2,300	620,100	566,000	574,982,801 to
518,114,834 to 5,000	544,999,729 to 9,800	559,736,353 to 6,400	983,500
518,126,550 to 6,900	545,553,528 to 3,800	559,841,401 to 1,700	575,311,207 to 1,400
518,147,801 to 8,000	545,775,152 to 5,200	560,473,901 to 3,922	575,311,297 to
518,761,501 to 1,600	547,276,820 to	561,223,101 to 3,400	317,400
520,736,961 to 7,000	277,000	561,249,012 to 9,200	575,913,143 to 3,200
522,798,708 to 8,800	547,457,901 to	561,265,399 to 5,500	575,977,151 to 7,200
523,727,009 to 7,100	458,300	562,601,501 to 1,600	576,674,701 to 4,800
525,483,962 to 4,000	547,469,676 to 9,700	563,184,500 to 4,700	577,385,856 to
525,774,401 to 4,600	547,542,271 to	563,957,851 to 7,860	386,100
526,389,501 to 9,600	543,000	564,299,834 to	577,907,201 to 7,800
526,389,972 to	547,578,870 to 8,900	300,000	577,917,601 to 7,800
390,000	547,923,901 to	564,319,659 to 9,700	578,365,863 to 5,900
528,910,726 to 0,900	924,000	565,045,232 to 5,245	578,649,083 to 9,100
530,248,201 to 8,300	548,988,201 to 8,300	565,145,850 to 5,875	578,988,972 to
530,756,618 to 6,700	549,641,019 to 1,100	565,868,534 to 8,549	989,400
531,847,601 to 7,700	549,670,720 to 0,800	567,078,033 to 8,100	579,017,876 to 7,900
532,013,666 to 3,700	550,092,673 to 2,700	567,422,270 to 2,600	579,458,901 to 9,400
532,401,823 to 1,900	550,355,949 to	568,505,097 to 5,100	579,541,273 to 1,299
532,883,490 to 3,500	356,100	568,574,080 to 4,099	579,877,101 to 7,200
533,554,660 to 4,800	551,144,112 to 4,400	569,537,631 to	580,207,301 to 7,770
533,820,480 to 0,496	551,698,301 to 8,320	538,000	580,335,207 to 5,300
533,820,501 to 0,600	551,961,814 to 1,880	569,791,703 to 1,730	580,337,901 to 8,000
534,086,901 to 7,000	552,222,532 to 3,800	569,793,491 to 3,510	580,473,401 to
535,084,079 to 4,200	553,468,301 to 8,400	569,915,309 to 5,320	474,000
536,606,101 to 6,300	553,853,051 to 3,100	570,275,601 to 5,700	580,562,401 to 2,500
537,240,745 to 0,800	554,939,152 to 9,200	571,065,984 to	580,899,103 to 9,200
537,417,901 to 8,000	554,998,701 to 8,800	066,600	581,171,918 to
537,528,457 to 8,500	555,144,758 to 4,770	571,106,886 to	172,400
538,691,301 to 1,500	555,219,956 to	107,200	581,341,293 to 1,400
539,073,831 to 3,900	220,000	571,123,771 to 3,900	581,986,501 to 6,600
539,120,109 to 0,200	556,084,478 to 4,500	572,226,617 to 6,700	584,862,862 to 3,900
539,132,909 to 3,000	556,250,024 to 0,200	572,380,133 to 0,145	
539,805,426 to 5,600	556,351,291 to 1,600	572,380,203 to 0,258	

**Make annual examinations of all locks and keys to assure that individual clerks' keys will not open locked drawers, safe compartments, or stamp cabinets of other employees.**

## EXPRESS MAIL INTERNATIONAL SERVICE—BOTSWANA

Effective January 16, 1989, On Demand and Custom Designed Service is available to, but not from, Botswana. Service from Botswana is not available but may be established in the future. The basic features of Express Mail International Service (EMS) to Botswana follow.

### Services Available

Custom Designed Service  
On Demand

**Note:** In Botswana, Express Mail International Service is called International Expedited Mail.

### Weight and Size Limits

Maximum weight—44 pounds (20 kilograms);  
Maximum length—36 inches (900 millimeters);  
Maximum combined length and girth—79 inches (2 meters).

### Areas Served

EMS is available to all locations.

### Delivery

EMS items will be delivered within 24 hours of their receipt by the exchange office. Items received by 10 a.m. on Saturdays will be delivered the same day. There are no deliveries on Sundays and public holidays. Delivery of items containing merchandise is subject to verification and payment of customs duties.

### No Service Guarantee

Customers must be told that there is no service guarantee on any EMS item.

### Country Code: BW

### Numerical Data Entry Code: 97

### Custom Designed Initial Shipment Date

The initial shipment date (Item 3 of Form 5637, *Express Mail Service Leg*) for Custom Designed Service agreements should be 17 days after the date one copy of the agreement is sent to:

Office of the Director  
Department of Postal Services  
P.O. Box 100, Gaborone  
BOTSWANA

### Acceptable Items

All items admissible in international mail to Botswana are accepted in EMS, including correspondence and business papers, merchandise samples, and merchandise. Coins; banknotes; currency notes (paper money); traveler's checks; securities

payable to bearer; platinum, gold, and silver (manufactured or not); precious stones; jewelry; and other valuable articles are *prohibited* in EMS shipments to Botswana. See Country Conditions of Mailing for Botswana in the INTERNATIONAL MAIL MANUAL (IMM) for specific prohibitions and restrictions.

### Acceptable Items and Customs Declaration

Items	Customs form/required endorsement
Correspondence and business papers.	Form 2976, <i>Customs—Douane CI</i> (green label) and endorse item clearly next to label with Business Papers.
Merchandise samples without commercial value.	Form 2976, <i>Customs—Douane CI</i> (green label).
Merchandise and all articles subject to customs duty.	Form 2966-A, <i>Parcel Post Customs Declaration—United States of America</i> . A commercial invoice should be included with all commercial shipments.

### Rates

Pounds (up to and including)	On demand	Custom de-signed
1/2	\$18.00	\$26.00
1	21.00	29.00
2	28.00	36.00
3	35.00	43.00
4	42.00	50.00
5	49.00	57.00
6	56.00	64.00
7	63.00	71.00
8	70.00	78.00
9	77.00	85.00
10	84.00	92.00
11	91.00	99.00
12	98.00	106.00
13	105.00	113.00
14	112.00	120.00
15	119.00	127.00
16	126.00	134.00
17	133.00	141.00
18	140.00	148.00
19	147.00	155.00
20	154.00	162.00
21	161.00	169.00
22	168.00	176.00
23	175.00	183.00
24	182.00	190.00
25	189.00	197.00
26	196.00	204.00
27	203.00	211.00
28	210.00	218.00
29	217.00	225.00
30	224.00	232.00
31	231.00	239.00
32	238.00	246.00
33	245.00	253.00

**EXPRESS MAIL INTERNATIONAL SERVICE—BOTSWANA—Continued**

**Rates—Continued**

Pounds (up to and including)	On demand	Custom de-signed
34.....	\$252.00	\$260.00
35.....	259.00	267.00
36.....	266.00	274.00
37.....	273.00	281.00
38.....	280.00	288.00
39.....	287.00	295.00
40.....	294.00	302.00
41.....	301.00	309.00
42.....	308.00	316.00

**Rates—Continued**

Pounds (up to and including)	On demand	Custom de-signed
43.....	\$315.00	\$323.00
44.....	322.00	330.00

Future issues of the IMM; Handbook DM-201, *Express Mail Service*; and Publication 273, *Express Mail International Service Guide*, will include this revision.—Marketing Dept., 2-2-89.

**MAIL ALERT**

The mailings shown below will be deposited in the near future. Offices should attempt to honor the requested home delivery dates, but not at additional expense. Mailers wishing to participate in these alerts, for mailings of one million pieces or more, should contact the National Accounts Division at (202) 268-2207, no later than the 15th of the month preceding the month of the requested delivery dates.

Title on mailings	Class and type of mail	Requested delivery dates	Number of pieces	Distribution	Presort level	Comments
North Shore Animal League.	Third.....	2-6-2-10	1.3 million....	Nationwide...	CR, 5 digit....	Sweepstakes mailing with printed deadline dates.
JC Penney General Sale.....	Third Flats....	2-9-2-11	8 million.....	Nationwide...	CR, 5 digit....	Origin mailing—RR Donnelley, Spartanburg, SC.
Best '89 President's Sale—24 pages.	Third.....	2-13-2-16	8.7 million....	Nationwide...	Carrier route.	Measures 8¼ x 10½ inches.
Sears/Catalog.....	Third, Spring catalog—240 pages.	2-15-2-22	11 million....	Nationwide...	Carrier route.	Or Current Resident endorsement on each mailpiece.
JC Penney Summer Catalog.	Third Flats....	2-23-2-25	8 million.....	Nationwide...	CR, 5 digit....	Origin mailing, RR Donnelley, Spartanburg, SC.
Sears Roebuck Company....	Third Letters.	2-23-2-25	12 million....	Nationwide...	Carrier route.	Ivory #10 envelopes w/brown Sears logo.
Sears/Catalog.....	Third, March sale, catalog—120 pages.	2-23-3-2	14 million....	Nationwide...	Carrier route.	Or Current Resident endorsement on each mailpiece.

—Marketing Dept., 2-2-89.

**DOMESTIC ORDER**

*False Representation.* Enforced by postmaster at city listed.

State/city	Name covered	Product
GA, Atlanta 30342-1119.....	Your Mac Source, Inc., 5600 Roswell Road, Prado North, Suite 264.	Failure to furnish computer equipment.

—Judicial Officer, 2-2-89.

**INVALID EXPRESS MAIL CORPORATE ACCOUNT NUMBERS**

To be posted and used by retail/acceptance clerks. This supersedes all previous notices. Destroy PB 21709 listing. Retail/acceptance clerks must not accept Express Mail shipments bearing any of the invalid numbers (listed below) in the "customer number" or "agreement number" section of the label or form.

Note: The first 6 digits of a 9-digit Custom Designed Service and Next Day Pickup Service Agreement make up the Corporate Account Number.

008992	042031	089299	117529	208255	300283	314675	332079	336792	386029	454313	547021	611127
009696	044036	089347	117536	209010	300286	320773	332120	336839	388049	460033	549102	611130
009700	044074	089371	117577	212324	300287	320783	332139	336848	389004	460036	551240	611131
009721	049003	089404	117690	212332	300307	320823	332140	336856	392110	460037	551243	611147
009807	050027	090020	117708	212362	300312	320830	332199	336862	392115	461015	551280	616052
009863	054004	090045	117720	212365	300317	322356	332352	336868	392172	461026	551374	616076
010079	054045	090159	117730	212371	300319	322413	332398	336880	392192	462291	551434	616081
010205	056052	090357	117778	212402	300321	322513	332478	336890	392270	462339	551457	618063
011033	057002	090607	117790	212523	300385	322672	332510	336902	392406	462344	554678	618099
011065	060002	090616	117850	212557	300424	322681	332542	337143	392410	462362	554693	618107
015110	060004	090719	117947	212580	300443	322682	332543	337148	392431	462368	554749	626003
016384	060017	090731	118021	212598	300497	323070	332601	337292	392405	467013	554788	628028
016427	060106	090913	119008	212647	300543	323127	332670	337349	392420	468054	554830	628046
016464	060126	091215	119078	220016	300559	323139	332744	337362	392515	468094	554850	629010
016721	060181	091302	124007	220047	300564	323208	332905	337435	392519	468163	557007	629018
016774	060225	091484	126012	220075	300586	323073	332932	337440	400019	468175	570074	631411
016798	061241	091507	128506	220145	300596	323097	332992	338182	400018	468186	570151	631497
016872	065011	091557	129808	221015	300599	323418	333011	339324	402152	468190	577035	631510
016953	065081	091558	132112	221032	300617	323741	333014	339352	402165	468211	577039	631596
018176	065102	095022	132121	221119	300623	326219	333019	339369	402189	468232	585204	631770
018200	065114	100528	132147	221123	300665	326243	333058	339465	402213	471018	591810	631821
018264	065130	100530	132154	221129	300686	327069	333212	339475	402246	471019	598508	631870
018267	065155	100564	132194	222045	300738	327076	333284	339497	402303	471024	598529	631894
018302	065219	100736	132219	222062	300783	327082	333335	339604	402316	473006	600029	637102
018431	065511	100889	132231	232112	300802	327096	333413	339711	402337	473030	600020	641108
018503	066002	101034	142165	245212	300809	327103	333557	340120	402343	473076	600029	641108
019296	066067	101218	142175	253167	300812	327128	333640	340141	402367	473331	600049	641322
019319	066069	101244	142218	257116	300819	327141	333681	340004	402394	474016	600069	641392
020036	066103	101345	142286	257123	300856	327156	333708	340019	402429	480063	600119	641430
021242	067106	101384	142292	261004	300892	327158	333731	352043	402451	480108	600137	641447
021352	069207	101388	142373	263011	300916	327178	333842	352226	402452	480116	600142	641518
021362	069218	101412	142418	265016	300929	327216	333862	352247	402458	480126	600146	641633
021397	069288	101555	146058	271040	300936	327256	333876	352285	402495	480137	600184	641682
021495	069303	101661	152169	271067	300974	327285	333904	352311	402552	480208	600214	641753
021510	069316	102074	152181	272030	300999	327307	333949	352372	402554	480296	600291	641770
021561	069323	102213	152191	272045	301122	327317	334056	356425	402575	480316	600317	641870
021701	069327	102222	152287	272096	301130	327359	334231	356625	405054	480526	600316	641888
021768	069333	102223	152301	273052	301138	327461	334253	358190	405074	480629	600519	641895
021931	069411	102271	152337	274013	301188	328135	334255	358850	405203	480864	600563	641985
021982	069418	102409	152381	274093	301193	328162	334273	358952	405204	480902	600608	648116
022026	069452	102447	152509	276262	301210	328167	334309	359825	405208	480945	600643	652270
023029	069463	102472	152535	276278	301221	328226	334420	361044	407009	480970	600658	652400
023033	069470	102514	152594	276281	301230	328276	334470	361093	410004	482355	600916	658186
023057	069658	102686	152626	277003	301297	328312	334529	362013	410074	482509	601066	658204
023071	069700	102747	152674	282276	301331	328325	334622	372246	425109	482377	601067	660031
023080	069767	102766	156035	282352	301348	328332	334722	372305	432183	482710	601078	662133
023089	069866	102834	165068	282366	301385	328355	334772	372311	432252	485059	601115	662166
023101	069867	102886	171070	282463	301423	328387	334831	372339	432256	485118	601222	662171
023112	071535	102889	171117	283158	301426	328421	334934	372340	432421	485165	601232	662178
023138	071558	102892	174052	283188	301467	328459	334935	372357	436066	485172	601341	662217
023210	071643	102928	176065	283191	301496	329096	334946	372361	436076	486051	601384	662264
024054	071729	102949	189010	283237	301497	329148	334977	372369	436104	486072	601615	662273
024060	075043	102950	191404	283271	301507	329183	335048	372382	436109	486038	601663	662285
025048	075110	102959	191519	292270	301550	329185	335080	372398	436115	486205	601689	662306
025067	075127	102981	191684	294163	301606	329207	335100	372409	436117	489262	601754	662340
025068	075157	103015	191696	294181	301617	329216	335170	372411	436135	490146	601765	662342
025124	075183	104082	191739	294182	301619	329240	335276	372429	436185	490167	601772	662376
026016	075214	105024	191749	294243	301629	329247	335358	372435	436194	490166	601888	666108
026027	075280	105053	192017	294262	301645	329257	335369	372458	441013	495087	601993	666380
026028	075289	105057	192079	294289	301661	329323	335380	376107	441593	495110	602009	670008
026110	075294	105243	192102	294293	301704	330009	335635	379222	441623	495142	603017	672136
026122	076124	105270	192129	294326	301740	330031	335727	379235	441637	498090	603022	672290
026171	076149	106237	192186	295048	301819	330036	335753	380119	441699	503175	604911	672298
027059	076165	106246	192213	295080	301835	330121	335782	380126	441700	513128	605010	672318
027085	076198	108037	193070	295194	301854	330180	335788	380133	441860	522004	605306	672326
027096	076238	109127	193131	295230	301911	330247	335794	381057	441950	522009	605456	673002
027149	076284	109234	193136	295257	302016	330261	335816	381382	441997	522014	605460	679025
027182	076410	109274	193170	295272	302065	330301	335831	381385	443054	524080	605940	681156
027476	076413	111050	193222	295284	302079	330402	335905	381399	443122	525003	607002	681302
028157	076477	111114	193244	295304	303500	330404	335909	381471	445110	525004	607129	685059
028233	077608	111144	196063	295342	303547	330411	335963	381512	447061	525014	607138	686001
028316	077641	112370	198061	296159	303654	330526	335964	381538	447069	532245	607144	701651
029110	078035	112430	200271	296181	303682	330584	335967	381568	450004	532253	607209	701737
029249	079018	112787	200363	296237	303689	330612	335974	381578	450046	532329	607226	701778
029269	079431	112877	200440	300006	303706	330646	335979	381650	450076	532374	607233	701797
029321	079603	113290	200443	300021	303720	330763	336005	381651	450087	532435	607260	701842
029472	080042	113340	200450	300040	303730	330776	336061	381679	451035	532436	607419	701868
030022	080114	114032	200465	300055	303756	330789	336078	381684	452015	532464	607440	705060
030039	080233	115172	200550	300089	303798	330924	336104	381713	452258	532506	607452	705083
030051	080446	115194	200640	300098	303811	331008	336150	381738	452374	532559	607457	706104
030090	085025	115203	200677	300112	303814	331099	336220	381756	452393	532605	607490	706110
032006	085086	115235	200682	300118	303854							

**INVALID EXPRESS MAIL CORPORATE ACCOUNT NUMBERS—Continued**

711257	731751	750297	760319	761588	787389	803118	856403	901930	913911	924153	937235	972371
711262	731753	750302	760333	761593	787417	803131	871029	901986	913913	924180	937254	972388
711303	731757	750313	760347	761601	787436	804039	871318	902399	913914	924187	937308	972414
711309	731758	750317	760364	761603	787452	804047	871349	902435	913918	924190	937309	972429
711363	731804	750370	760369	761606	787487	805063	871361	902514	913932	924199	937312	972432
711375	731821	750379	760370	761625	787495	805151	882107	902593	914005	924258	937340	972442
711407	731822	750406	760402	761654	787529	809033	883100	902596	914025	924268	937342	972456
711428	731853	750421	760429	761659	787535	809054	891371	902643	914113	924305	937346	972463
711429	731872	750425	760431	761668	787544	809076	891388	902666	914163	924332	937388	972468
711434	731905	750462	760434	761676	787600	809095	895114	902728	914173	925018	937400	972472
711446	731970	750466	760435	762037	787612	809150	895168	902735	914180	925033	937412	972485
711450	731982	750468	760436	762050	787661	813077	898221	902738	914245	925037	939114	972504
711456	737010	750483	760437	763082	788015	815238	900053	902775	917485	925069	939122	972527
711457	740026	750511	760445	770542	788020	815025	900117	902809	917530	925083	940124	972582
711474	740030	750619	760446	770979	788039	816421	900125	902840	917544	926020	940140	972598
711503	740065	751026	760466	771138	788042	816422	900127	902906	917603	926058	940341	972627
711508	740071	751065	760489	771185	791091	820338	900178	902980	917638	926076	940441	972693
711510	740084	751087	760475	771209	791206	826204	900189	903133	917672	926699	941258	972707
711519	740086	752004	760483	773085	791207	827017	900196	903192	917707	926715	941259	973129
711527	740092	752140	760501	772100	791217	833145	900228	907021	917714	926855	941359	973234
711537	740095	752170	760518	772239	791289	837146	900249	907025	917740	926961	941520	977041
711542	740105	752179	760519	773291	791299	840137	900257	907092	917745	927307	945277	980007
712104	740106	752190	760522	773483	791327	841351	900287	907101	917779	927379	945309	981530
712118	740323	752226	760535	772614	794191	841358	900303	907248	917806	927402	945360	981545
712124	741034	752233	760535	772616	794289	841404	900351	907366	917866	927413	945393	981556
712125	741035	752550	760574	772689	794344	841472	900377	907434	917893	927434	945412	981591
712128	741090	752639	760580	772721	794351	841527	900384	907590	917940	927460	945440	981622
712135	741137	752655	761084	772742	797144	846047	900388	907616	917970	927471	945472	981644
712136	741225	752665	761291	772743	797159	847046	900396	907642	917976	927483	945490	981666
712153	741239	752670	761304	772763	799150	847089	900401	907690	918020	927582	945552	981672
712155	741332	752682	761320	772771	799187	850071	900420	907712	918055	927593	945554	981698
712159	741462	752700	761335	772803	799188	850157	900440	907718	918126	927607	945588	981700
712162	741516	752706	761351	772969	800103	850171	900471	907862	918148	928124	946212	981729
722070	741523	752708	761365	772975	800106	850193	900492	911062	921428	928199	946214	981821
724029	741570	752716	761379	772988	800194	850213	900523	911104	921449	928234	947028	981877
724033	741647	752718	761381	773008	800206	850237	900545	911118	921494	928238	947055	981914
730098	741654	752740	761388	773202	801115	850252	900584	912273	921669	928471	948034	981987
730136	741718	752743	761396	778060	801136	850300	900605	912290	921736	928603	949068	981998
730185	741731	752767	761416	780023	801169	850311	900629	912311	921816	928739	949119	983000
730253	741736	752816	761422	780057	801206	850387	900633	913332	921891	928762	949131	984122
730291	741777	752821	761439	780058	802017	850395	900636	913346	921998	928778	950093	984123
730293	741790	752837	761446	781018	802030	850445	900639	913372	922037	931374	950241	988017
730320	741793	752843	761451	782002	802050	850554	900658	913391	922047	931379	950328	992170
730338	741830	752880	761453	782017	802069	850605	900675	913384	922061	931422	951043	992310
731237	741869	752890	761456	782061	802074	850636	900683	913390	922073	931441	958263	992404
731333	741880	752898	761459	782066	802106	856042	900774	913447	922087	931506	958285	992548
731339	741903	752936	761464	782101	802107	856083	900778	913456	922090	931535	958304	995270
731366	741904	752954	761466	782104	802118	856093	900866	913462	922103	931812	958305	995376
731378	744015	752956	761470	782106	802536	856095	901294	913492	922104	931826	958316	995380
731382	750100	752958	761480	782112	802548	856119	901395	913535	922112	931932	958375	995429
731441	750120	752966	761486	782116	802690	856120	901438	913547	922114	931935	968249	995581
731488	750135	752980	761490	782119	802704	856136	901466	913569	922125	931954	968354	997063
731520	750156	752983	761498	782123	802744	856143	901525	913582	922126	931984	968360	997067
731533	750158	753047	761503	782131	802770	856171	901604	913626	922131	932520	968386	997103
731539	750168	753083	761519	782148	802785	856179	901668	913642	922142	932557	968586	997131
731548	750175	753085	761523	782184	802805	856185	901676	913671	922149	933085	968594	997139
731552	750181	753112	761531	782321	802863	856190	901686	913687	922154	933091	968605	997167
731557	750192	753147	761532	782401	802871	856202	901760	913694	922160	933108	969007	997179
731573	750209	753194	761541	782453	802891	856203	901774	913748	922161	933119	969014	997201
731594	750245	753230	761544	782476	802916	856242	901818	913776	924105	933172	972286	997205
731615	750248	753315	761548	785305	802917	856247	901835	913802	924112	933187	972303	997214
731625	750265	760289	761560	785311	802948	856261	901845	913805	924125	933203	972330	997252
731674	750274	760292	761566	787346	802977	856296	901848	913832	924127	933247	972333	997254
731716	750277	760300	761571	787358	802996	856328	901857	913834	924129	933255	972346	998126
731741	750295	760303	761585	787386	803113	856387	901878	913885	924133	933072	972349	998131

—Marketing Dept., 2-2-89.



**PREVENT THEFT**

**TEST YOUR BURGLAR ALARM**

**UNITED STATES POSTAL SERVICE**

WASHINGTON, DC 20260-1571  
OFFICIAL BUSINESS

PENALTY FOR PRIVATE USE TO  
AVOID PAYMENT OF POSTAGE, \$300

FIRST-CLASS MAIL  
POSTAGE & FEES PAID  
USPS  
PERMIT NO. G-10

**FIRST-CLASS**

To order the **POSTAL BULLETIN**, follow instructions below and return this entire page.  
Do NOT detach the address label.

1. Postal Service Requisitions	2. Public Orders
<p><b>a. Missing Issues.</b> To order copies not received in regular distribution, call the Materiel Distribution Center at PEN 440-4211 or (201) 707-4211, ext. 211.</p> <p><b>b. Single Issue.</b> To order additional copies, send Form 7380, <i>Supply Center Requisition</i>, to the Materiel Distribution Center, Somerville, NJ 08877-9991.</p> <p><b>c. Quantity Changes.</b> Complete form below and send entire page, including mailing label, to: Document Control Division USPS Headquarters Washington, DC 20260-1571</p> <p><b>d. Address Changes.</b> Same as 1-c.</p>	<p><b>a. Source.</b> Superintendent of Documents U.S. Government Printing Office Washington, DC 20402-0001 Tel. (202) 783-3238</p> <p><b>b. Single Copy.</b> Complete form below and send this entire page and check or money order for \$1.50 per copy (payable to Superintendent of Documents) to address in 2-a above.</p> <p><b>c. Subscription.</b> Complete form below. Send this entire page and check or money order for \$71.00 (per year) to address in 2-a above.</p> <p><b>d. Address Changes.</b> Complete form below and send entire page to address in 2-a above.</p>

**POSTAL BULLETIN ORDER FORM**

Postal Facility, Company, or Personal Name	Old Quantity	New Quantity
Attention Line (if needed)	Customer's Home Phone ( )	Customer's Office Phone ( )
Street Address	Name of Approving Manager	
City, State, ZIP + 4	Signature of Approving Manager	
Country (if needed)	Credit Card No. (if used)	Exp. Date (mo/yr)

Check one:

MasterCard  VISA accepted



**Effective Period:** POSTAL BULLETIN Articles are effective for 1 year unless articles change the text of permanent directives or unless otherwise specified. **Distribution:** USPS distributes the BULLETIN to all postal facilities. The Government Printing Office distributes copies to all public subscribers. **Index:** A quarterly index of BULLETIN articles appears in January, April, July, and October; a yearly index appears early the following year.